

# CORAL HOMES

DOUBLE STOREY HOMES



30<sup>+</sup> years  
BUILDING  
EXPERIENCE



## Our Difference



### Unbeatable Value

Our promise to you is to always provide you with outstanding value for money. We put more into our standard inclusions, so you don't need to spend thousands of dollars on upgrades later.



### 30+ Years' Experience

Australian families have trusted us to build their new home for over 30 years. Offering a high level of craftsmanship, value for money, security and transparency is why we are one of Australia's largest home builders today.



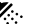



### Fixed Price Guarantee\*

We understand the financial commitments around building a home and provide you with peace of mind by offering contracts with a Fixed Price Guarantee\* upfront.



# Home Designs

Lot Width	Home Design	Size	   				Page
			Bed	Living	Bath	Car	
14.5m+	Bahama 37	340.24m <sup>2</sup>	4	3	2.5	2	6
17m+	Bahama 50	464.81m <sup>2</sup>	4	5	4	2	7
10m+	Baltimore 20	188.81m <sup>2</sup>	4	1	2.5	2	12
10m+	Baltimore 21	197.26m <sup>2</sup>	4	2	2.5	2	13
10m+	Baltimore 22	208.67m <sup>2</sup>	4	2	2.5	2	14
10m+	Baltimore 24	222.50m <sup>2</sup>	4	2	2.5	2	15
10m+	Baltimore 25	233.48m <sup>2</sup>	4	2	2.5	2	16
10m+	Baltimore 27	247.92m <sup>2</sup>	4	2	2.5	2	17
10m+	Baltimore 29	266.94m <sup>2</sup>	4	3	2.5	2	18
10m+	Baltimore 32	298.34m <sup>2</sup>	4	3	2.5	2	19
12.5m+	Baltimore 33	302.11m <sup>2</sup>	4	3	2.5	2	20
12.5m+	Baltimore 35	328.37m <sup>2</sup>	4	3	2.5	2	21
12.5m+	Baltimore 38	356.01m <sup>2</sup>	4	3	2.5	2	22
12.5m+	Baltimore 38 MKII	356.01m <sup>2</sup>	5	3	2.5	2	23
12.5m+	Baltimore 41	382.71m <sup>2</sup>	5	3	3	2	24
12.5m+	Boston 32 MKII	297.89m <sup>2</sup>	4	3	2.5	2	34
14m+	Boston 33	306.82m <sup>2</sup>	4	3	2.5	2	35
12.5m+	Boston 34 MKII	318.98m <sup>2</sup>	5	3	3	2	36
14m+	Boston 35	328.04m <sup>2</sup>	5	3	3	2	37
12.5m+	Boston 36 MKII	335.15m <sup>2</sup>	5	3	3	2	38
14m+	Boston 38	355.77m <sup>2</sup>	5	3	3	2	39
14m+	Boston 42	387.66m <sup>2</sup>	5	3	3	2	40
14m+	Boston 42 MKII	385.87m <sup>2</sup>	4	3	3	2	41
12.5m+	Monash 25	233.01m <sup>2</sup>	4	3	2.5	2	48
12.5m+	Monash 27	254.31m <sup>2</sup>	4	3	2.5	2	49
12.5m+	Monash 29	270.20m <sup>2</sup>	4	3	2.5	2	50
14m+	Monash 30	282.82m <sup>2</sup>	4	3	2.5	2	51
12.5m+	Monash 31	292.43m <sup>2</sup>	5	3	2.5	2	52
14m+	Monash 32	301.21m <sup>2</sup>	4	3	2.5	2	53
13m+	Monash 32 MKII	299.89m <sup>2</sup>	4	4	2.5	2	54
14m+	Monash 33	311.01m <sup>2</sup>	6	3	2.5	2	55
10m+	New Hampshire 33	305.93m <sup>2</sup>	4	3	2.5	2	62
10m+	Rochester 25	236.89m <sup>2</sup>	4	2	2.5	2	68
10m+	Rochester 27	255.40m <sup>2</sup>	4	3	2.5	2	69
10m+	Rochester 29	273.25m <sup>2</sup>	4	3	2.5	2	70
10m+	Rochester 31	288.24m <sup>2</sup>	4	3	2.5	2	71
10m+	Rochester 33	305.64m <sup>2</sup>	4	3	2.5	2	72
12.5m+	Seattle 34 MKII	319.67m <sup>2</sup>	4	3	3	2	78
12.5m+	Seattle 36 MKII	333.81m <sup>2</sup>	4	3	3	2	79



## Bahama Series

Comprising two storeys of truly innovative open-plan living, the Bahama Series promises something special from the moment you enter the homes' light filled entry. These homes promote indoor/outdoor living with spacious areas dedicated to both alfresco dining and outdoor lounging.

With no shortage of space, this series can accommodate larger families with ease. A double garage, plenty of storage and three generously sized living areas means there's something for everybody in the Bahama series.

# Bahama 37

4 Bed 3 Living 2.5 Bath 2 Car

14.5m+ Lot Width

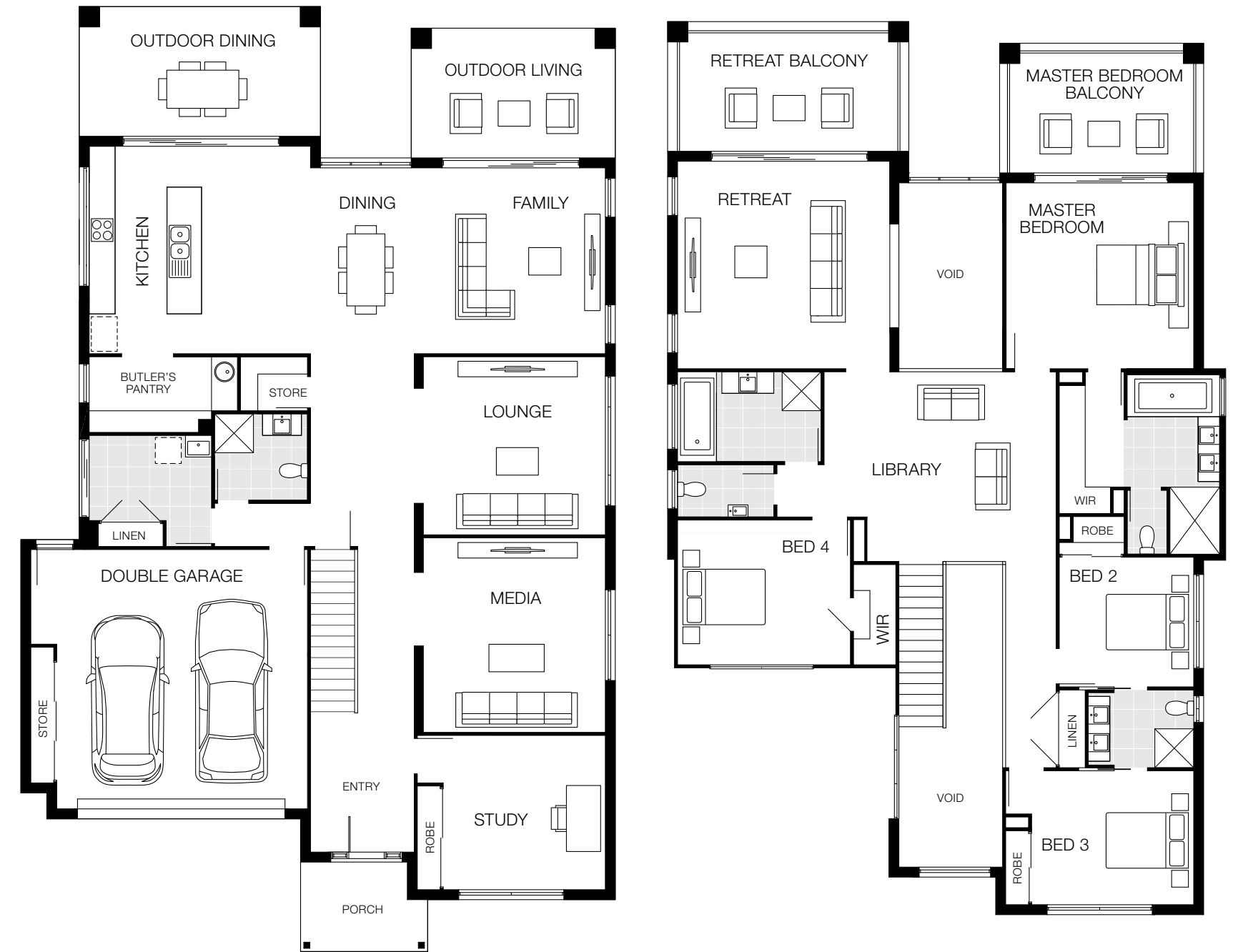


Bedrooms		Living Areas		Outdoor		Dimensions	
Master	4080 x 4020	Family	5040 x 4090	Outdoor Living	3500 x 4550	Length	19.52m
Bed 2	3500 x 2925	Lounge	4200 x 3420	Outdoor Dining	3970 x 3820	Width	12.25m
Bed 3	3500 x 2925	Retreat	4000 x 4020			Lower Area	193.92m <sup>2</sup>
Bed 4	3500 x 3560	Study	3000 x 3420			Upper Area	146.30m <sup>2</sup>
						Total Area	340.24m <sup>2</sup> (36.60sq)

# Bahama 50

4 Bed 5 Living 4 Bath 2 Car

17m+ Lot Width



Bedrooms		Living Areas		Outdoor		Dimensions	
Master	4300 x 4210	Family	4300 x 4420	Outdoor Living	3000 x 4720	Length	21.86m
Bed 2	3000 x 3110	Lounge	4120 x 4210	Outdoor Dining	3000 x 5580	Width	13.75m
Bed 3	3100 x 3750	Retreat	4800 x 4910	Retreat Balcony	3000 x 5580	Lower Area	248.79m <sup>2</sup>
Bed 4	3350 x 4000	Media	4500 x 4210	Master Room Balcony	3000 x 4720	Upper Area	216.02m <sup>2</sup>
		Library	4390 x 5370			Total Area	464.81m <sup>2</sup> (50.00sq)
		Study	3570 x 3750				

Floorplan based on Designer Facade. Floorplan is indicative only, conceptual in nature and subject to change. Floorplan may depict features and/or other products which are not included in the house design, not included in the house price and/or not available from Coral Homes. All measurements are in millimetres unless otherwise stated. Floorplan measurements are approximate and are not to scale. Lot width is based on Designer facade and is to be used as a guide only and may change due to developer covenants and Local Authority guidelines. ©Coral Homes Pty Ltd. The copyright in this floorplan is owned by or licensed to Coral Homes Pty Ltd and may not be reproduced, copied or dealt with in any manner which infringes the exclusive rights of Coral Homes Pty Ltd as prescribed by the Copyright Act 1968, without the express written authorisation of Coral Homes Pty Ltd.

Floorplan based on Designer Facade. Floorplan is indicative only, conceptual in nature and subject to change. Floorplan may depict features and/or other products which are not included in the house design, not included in the house price and/or not available from Coral Homes. All measurements are in millimetres unless otherwise stated. Floorplan measurements are approximate and are not to scale. Lot width is based on Designer facade and is to be used as a guide only and may change due to developer covenants and Local Authority guidelines. ©Coral Homes Pty Ltd. The copyright in this floorplan is owned by or licensed to Coral Homes Pty Ltd and may not be reproduced, copied or dealt with in any manner which infringes the exclusive rights of Coral Homes Pty Ltd as prescribed by the Copyright Act 1968, without the express written authorisation of Coral Homes Pty Ltd.

# Bahama Facade Options

14m+ Lot Width

Brighton Facade



Designer Facade



Emerald Facade





## Baltimore Series

A clever and versatile range of family homes that offer functionality where needed most. Immerse yourself in this home's family friendly communal areas, where open-plan kitchen, living and dining spaces provide seamless living.

From the four generously sized bedrooms to a luxurious master retreat for the grownups, the Baltimore offers the very best in practical home design and can be built on lot widths from 10m upwards.

# Baltimore 20

4 Bed 1 Living 2.5 Bath 2 Car

10m+ Lot Width

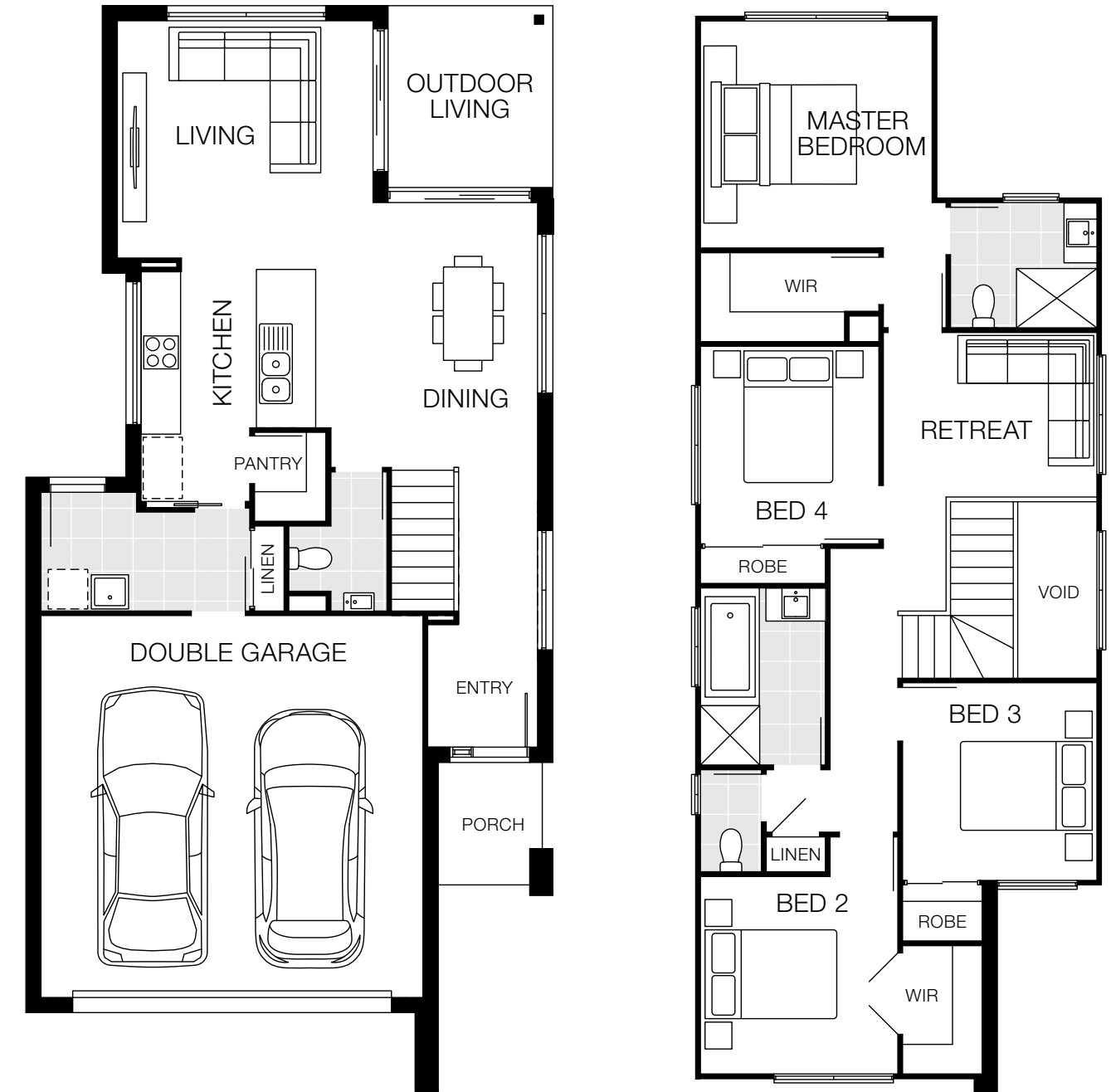


Bedrooms		Living Areas		Outdoor		Dimensions	
Master	3400 x 3700	Living	3470 x 3880	Outdoor Living	2750 x 2500	Length	16.49m
Bed 2	3000 x 3000	Dining	3500 x 3370			Width	8.00m
Bed 3	3000 x 2950					Lower Area	109.78m <sup>2</sup>
Bed 4	2900 x 2710					Upper Area	79.03m <sup>2</sup>
						Total Area	181.81m <sup>2</sup> (20.32sq)

# Baltimore 21

4 Bed 2 Living 2.5 Bath 2 Car

10m+ Lot Width



Bedrooms		Living Areas		Outdoor		Dimensions	
Master	3485 x 3520	Living	3600 x 3880	Outdoor Living	2760 x 2500	Length	16.49m
Bed 2	3000 x 3000	Dining	3420 x 3370			Width	7.90m
Bed 3	3000 x 2950	Retreat	2500 x 3240			Lower Area	109.37m <sup>2</sup>
Bed 4	3000 x 2710					Upper Area	87.89m <sup>2</sup>
						Total Area	197.26m <sup>2</sup> (21.23sq)

Floorplan based on Designer Facade. Floorplan is indicative only, conceptual in nature and subject to change. Floorplan may depict features and/or other products which are not included in the house design, not included in the house price and/or not available from Coral Homes. All measurements are in millimetres unless otherwise stated. Floorplan measurements are approximate and are not to scale. Lot width is based on Designer facade and is to be used as a guide only and may change due to developer covenants and Local Authority guidelines. ©Coral Homes Pty Ltd. The copyright in this floorplan is owned by or licensed to Coral Homes Pty Ltd and may not be reproduced, copied or dealt with in any manner which infringes the exclusive rights of Coral Homes Pty Ltd as prescribed by the Copyright Act 1968, without the express written authorisation of Coral Homes Pty Ltd.

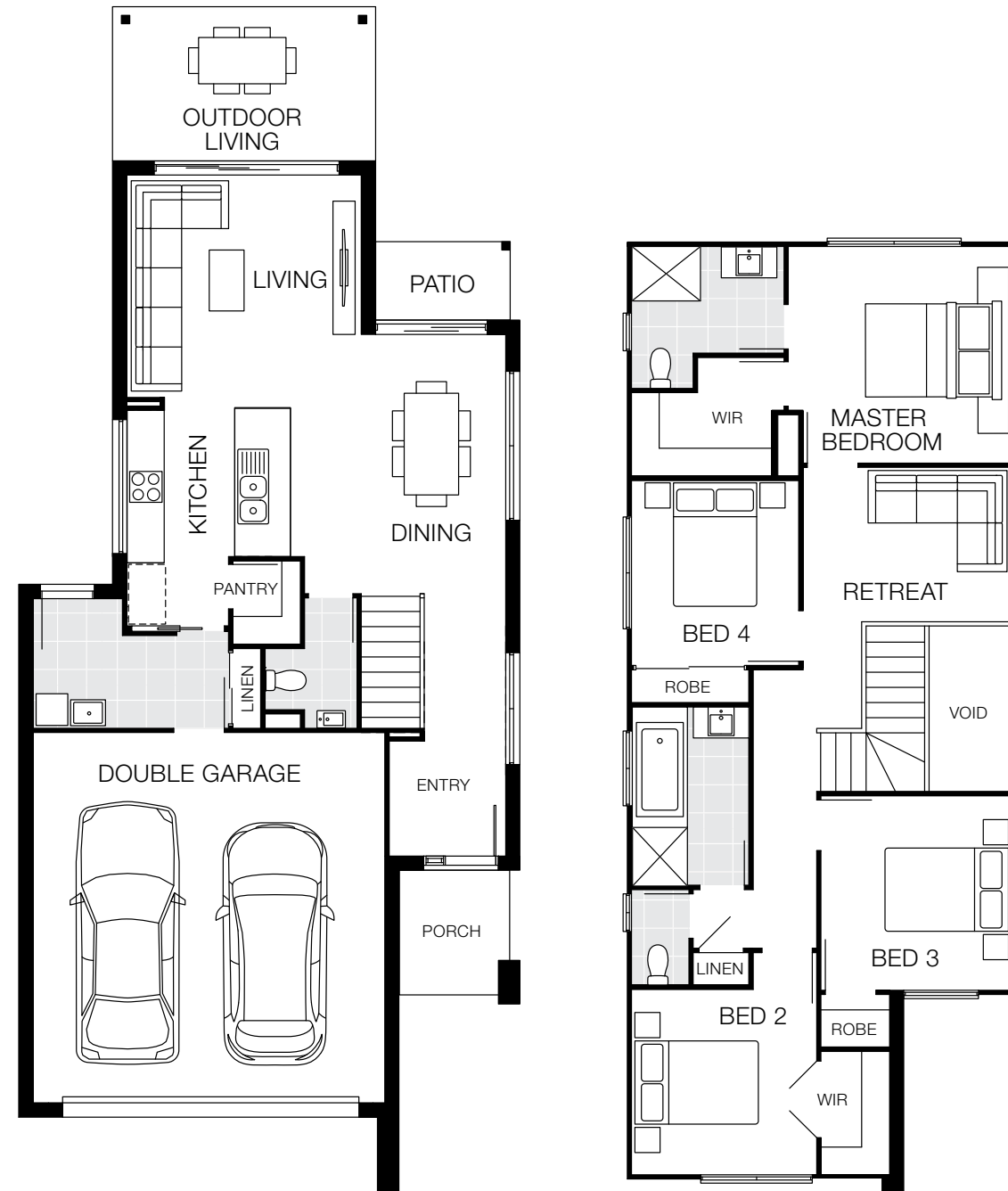
Floorplan based on Designer Facade. Floorplan is indicative only, conceptual in nature and subject to change. Floorplan may depict features and/or other products which are not included in the house design, not included in the house price and/or not available from Coral Homes. All measurements are in millimetres unless otherwise stated. Floorplan measurements are approximate and are not to scale. Lot width is based on Designer facade and is to be used as a guide only and may change due to developer covenants and Local Authority guidelines. ©Coral Homes Pty Ltd. The copyright in this floorplan is owned by or licensed to Coral Homes Pty Ltd and may not be reproduced, copied or dealt with in any manner which infringes the exclusive rights of Coral Homes Pty Ltd as prescribed by the Copyright Act 1968, without the express written authorisation of Coral Homes Pty Ltd.



# Baltimore 22

4 Bed 2 Living 2.5 Bath 2 Car

10m+ Lot Width

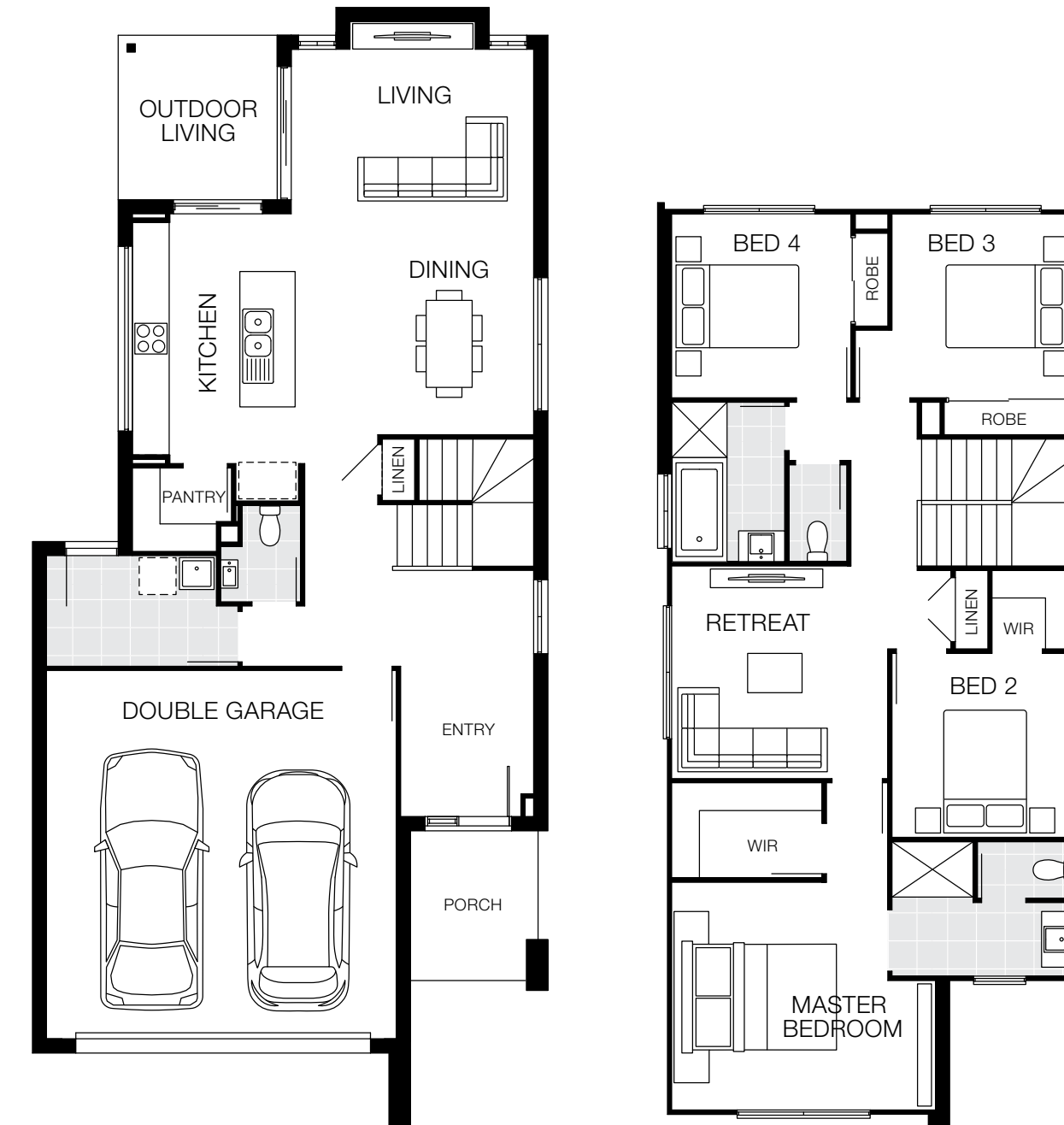


Bedrooms		Living Areas		Outdoor		Dimensions	
Master	3510 x 3600	Living	3600 x 3800	Outdoor Living	2500 x 4260	Length	19.19m
Bed 2	3000 x 3000	Dining	3600 x 3490	Patio	1270 x 2180	Width	8.12m
Bed 3	3150 x 3070	Retreat	2500 x 3360			Lower Area	118.65m <sup>2</sup>
Bed 4	3000 x 2710					Upper Area	90.02m <sup>2</sup>
						Total Area	208.67m <sup>2</sup> (22.46sq)

# Baltimore 24

4 Bed 2 Living 2.5 Bath 2 Car

10m+ Lot Width



Bedrooms		Living Areas		Outdoor		Dimensions	
Master	3710 x 3520	Living	3280 x 3950	Outdoor Living	2680 x 2590	Length	18.23m
Bed 2	3000 x 2950	Dining	3000 x 3890			Width	8.40m
Bed 3	3000 x 2950	Retreat	3460 x 3520			Lower Area	125.98m <sup>2</sup>
Bed 4	3000 x 2920					Upper Area	96.52m <sup>2</sup>
						Total Area	222.50m <sup>2</sup> (23.95sq)

Floorplan based on Designer Facade. Floorplan is indicative only, conceptual in nature and subject to change. Floorplan may depict features and/or other products which are not included in the house design, not included in the house price and/or not available from Coral Homes. All measurements are in millimetres unless otherwise stated. Floorplan measurements are approximate and are not to scale. Lot width is based on Designer facade and is to be used as a guide only and may change due to developer covenants and Local Authority guidelines. ©Coral Homes Pty Ltd. The copyright in this floorplan is owned by or licensed to Coral Homes Pty Ltd and may not be reproduced, copied or dealt with in any manner which infringes the exclusive rights of Coral Homes Pty Ltd as prescribed by the Copyright Act 1968, without the express written authorisation of Coral Homes Pty Ltd.

Floorplan based on Designer Facade. Floorplan is indicative only, conceptual in nature and subject to change. Floorplan may depict features and/or other products which are not included in the house design, not included in the house price and/or not available from Coral Homes. All measurements are in millimetres unless otherwise stated. Floorplan measurements are approximate and are not to scale. Lot width is based on Designer facade and is to be used as a guide only and may change due to developer covenants and Local Authority guidelines. ©Coral Homes Pty Ltd. The copyright in this floorplan is owned by or licensed to Coral Homes Pty Ltd and may not be reproduced, copied or dealt with in any manner which infringes the exclusive rights of Coral Homes Pty Ltd as prescribed by the Copyright Act 1968, without the express written authorisation of Coral Homes Pty Ltd.

# Baltimore 25

4 Bed 2 Living 2.5 Bath 2 Car

10m+ Lot Width



Bedrooms		Living Areas		Outdoor		Dimensions	
Master	3550 x 3520	Living	3600 x 3950	Outdoor Living	3430 x 2590	Length	18.93m
Bed 2	3250 x 2950	Dining	3380 x 3890			Width	8.40m
Bed 3	2950 x 3490	Retreat	3470 x 3520			Lower Area	134.01m <sup>2</sup>
Bed 4	2950 x 2980					Upper Area	99.47m <sup>2</sup>
						Total Area	233.48m <sup>2</sup> (25.13sq)

# Baltimore 27

4 Bed 2 Living 2.5 Bath 2 Car

10m+ Lot Width



Bedrooms		Living Areas		Outdoor		Dimensions	
Master	3670 x 3520	Living	4070 x 4400	Outdoor Living	4070 x 2590	Length	20.07m
Bed 2	3000 x 2950	Dining	3950 x 3890			Width	8.40m
Bed 3	3350 x 3490	Retreat	3600 x 3520			Lower Area	144.08m <sup>2</sup>
Bed 4	3000 x 2980					Upper Area	103.84m <sup>2</sup>
						Total Area	247.92m <sup>2</sup> (26.69sq)

Floorplan based on Designer Facade. Floorplan is indicative only, conceptual in nature and subject to change. Floorplan may depict features and/or other products which are not included in the house design, not included in the house price and/or not available from Coral Homes. All measurements are in millimetres unless otherwise stated. Floorplan measurements are approximate and are not to scale. Lot width is based on Designer facade and is to be used as a guide only and may change due to developer covenants and Local Authority guidelines. ©Coral Homes Pty Ltd. The copyright in this floorplan is owned by or licensed to Coral Homes Pty Ltd and may not be reproduced, copied or dealt with in any manner which infringes the exclusive rights of Coral Homes Pty Ltd as prescribed by the Copyright Act 1968, without the express written authorisation of Coral Homes Pty Ltd.

Floorplan based on Designer Facade. Floorplan is indicative only, conceptual in nature and subject to change. Floorplan may depict features and/or other products which are not included in the house design, not included in the house price and/or not available from Coral Homes. All measurements are in millimetres unless otherwise stated. Floorplan measurements are approximate and are not to scale. Lot width is based on Designer facade and is to be used as a guide only and may change due to developer covenants and Local Authority guidelines. ©Coral Homes Pty Ltd. The copyright in this floorplan is owned by or licensed to Coral Homes Pty Ltd and may not be reproduced, copied or dealt with in any manner which infringes the exclusive rights of Coral Homes Pty Ltd as prescribed by the Copyright Act 1968, without the express written authorisation of Coral Homes Pty Ltd.

# Baltimore 29

4 Bed 3 Living 2.5 Bath 2 Car

10m+ Lot Width



## Bedrooms

Master	3920 x 3520	Living	4000 x 3540
Bed 2	3000 x 2950	Dining	4000 x 3000
Bed 3	3350 x 3490	Retreat	3450 x 3520
Bed 4	3000 x 2980	Media	3950 x 3020

## Living Areas

## Outdoor

Outdoor Living	2800 x 7000
----------------	-------------

## Dimensions

Length	22.87m
Width	8.40m
Lower Area	163.77m <sup>2</sup>
Upper Area	103.17m <sup>2</sup>
Total Area	266.94m <sup>2</sup> (28.73sq)

# Baltimore 32

4 Bed 3 Living 2.5 Bath 2 Car

10m+ Lot Width



## Bedrooms

Master	4520 x 3470	Living	4400 x 3540
Bed 2	3430 x 3000	Dining	3760 x 3000
Bed 3	3500 x 3470	Retreat	3900 x 3470
Bed 4	3400 x 3000	Media	4100 x 3020

## Living Areas

## Outdoor

Outdoor Living	3000 x 7000
----------------	-------------

## Dimensions

Length	25.14m
Width	8.40m
Lower Area	179.52m <sup>2</sup>
Upper Area	118.82m <sup>2</sup>
Total Area	298.34m <sup>2</sup> (32.11sq)

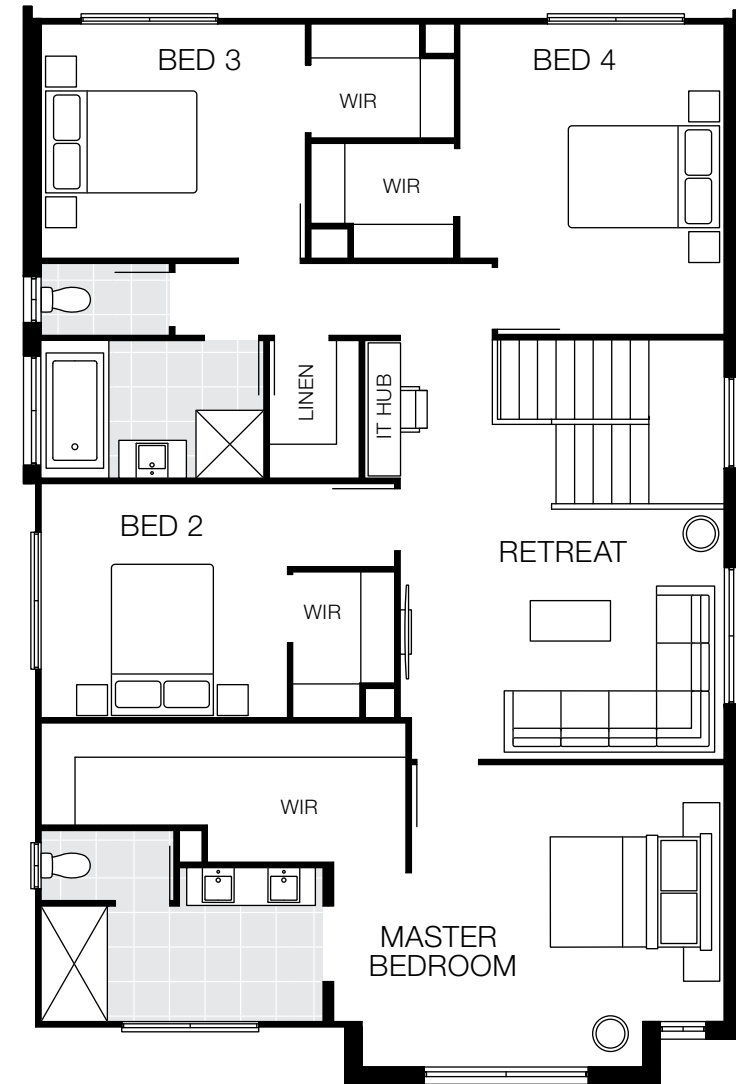
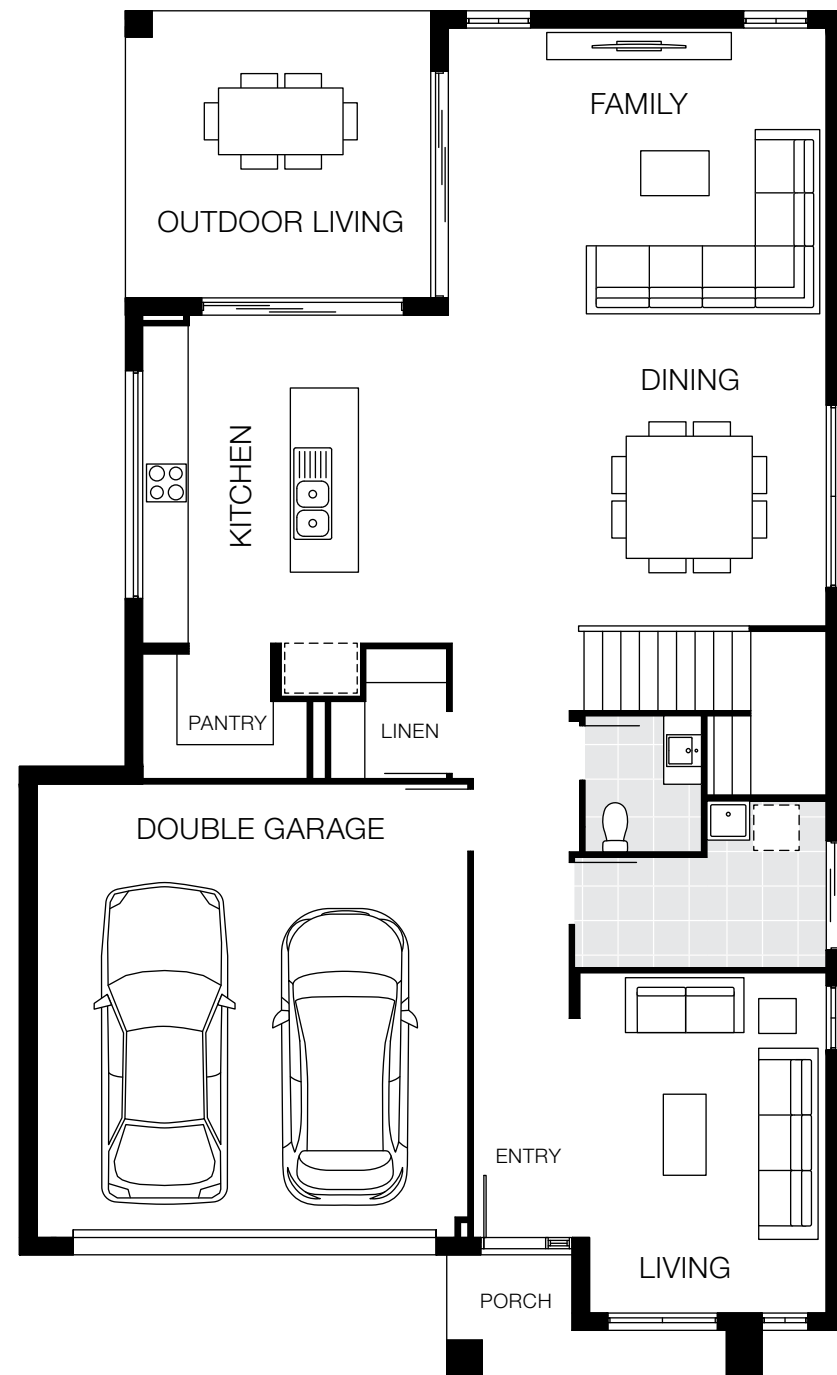
Floorplan based on Designer Facade. Floorplan is indicative only, conceptual in nature and subject to change. Floorplan may depict features and/or other products which are not included in the house design, not included in the house price and/or not available from Coral Homes. All measurements are in millimetres unless otherwise stated. Floorplan measurements are approximate and are not to scale. Lot width is based on Designer facade and is to be used as a guide only and may change due to developer covenants and Local Authority guidelines. ©Coral Homes Pty Ltd. The copyright in this floorplan is owned by or licensed to Coral Homes Pty Ltd and may not be reproduced, copied or dealt with in any manner which infringes the exclusive rights of Coral Homes Pty Ltd as prescribed by the Copyright Act 1968, without the express written authorisation of Coral Homes Pty Ltd.

Floorplan based on Designer Facade. Floorplan is indicative only, conceptual in nature and subject to change. Floorplan may depict features and/or other products which are not included in the house design, not included in the house price and/or not available from Coral Homes. All measurements are in millimetres unless otherwise stated. Floorplan measurements are approximate and are not to scale. Lot width is based on Designer facade and is to be used as a guide only and may change due to developer covenants and Local Authority guidelines. ©Coral Homes Pty Ltd. The copyright in this floorplan is owned by or licensed to Coral Homes Pty Ltd and may not be reproduced, copied or dealt with in any manner which infringes the exclusive rights of Coral Homes Pty Ltd as prescribed by the Copyright Act 1968, without the express written authorisation of Coral Homes Pty Ltd.

# Baltimore 33

4 Bed 3 Living 2.5 Bath 2 Car

12.5m+ Lot Width

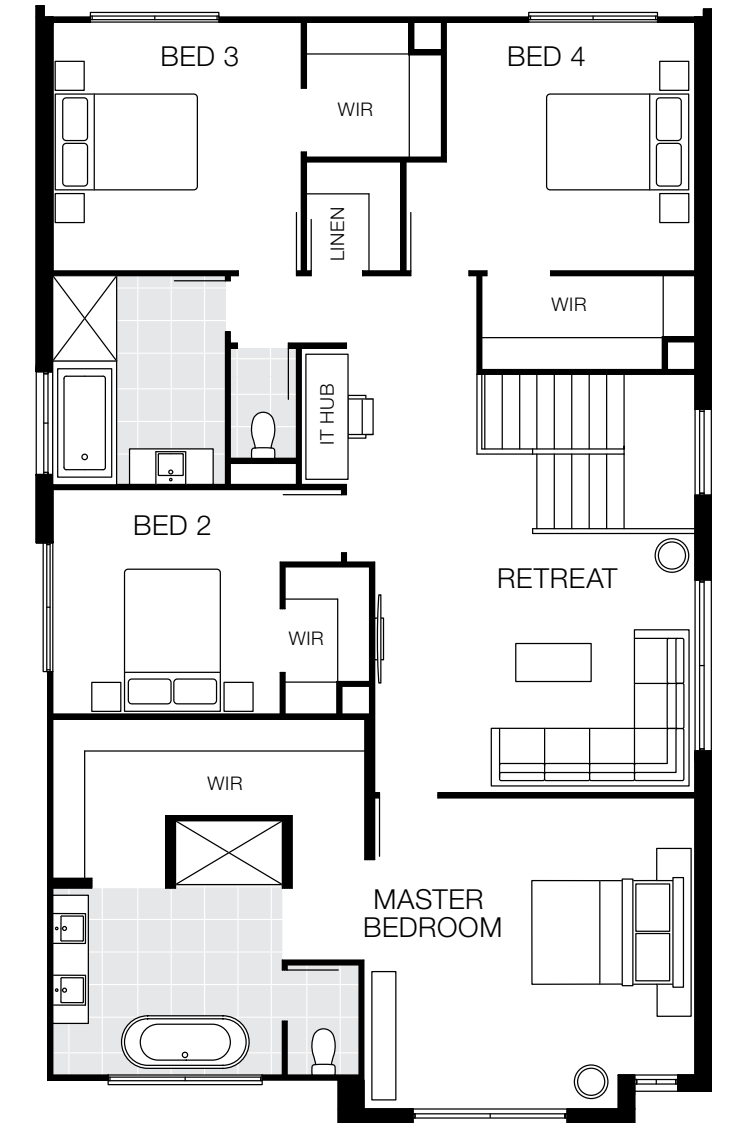
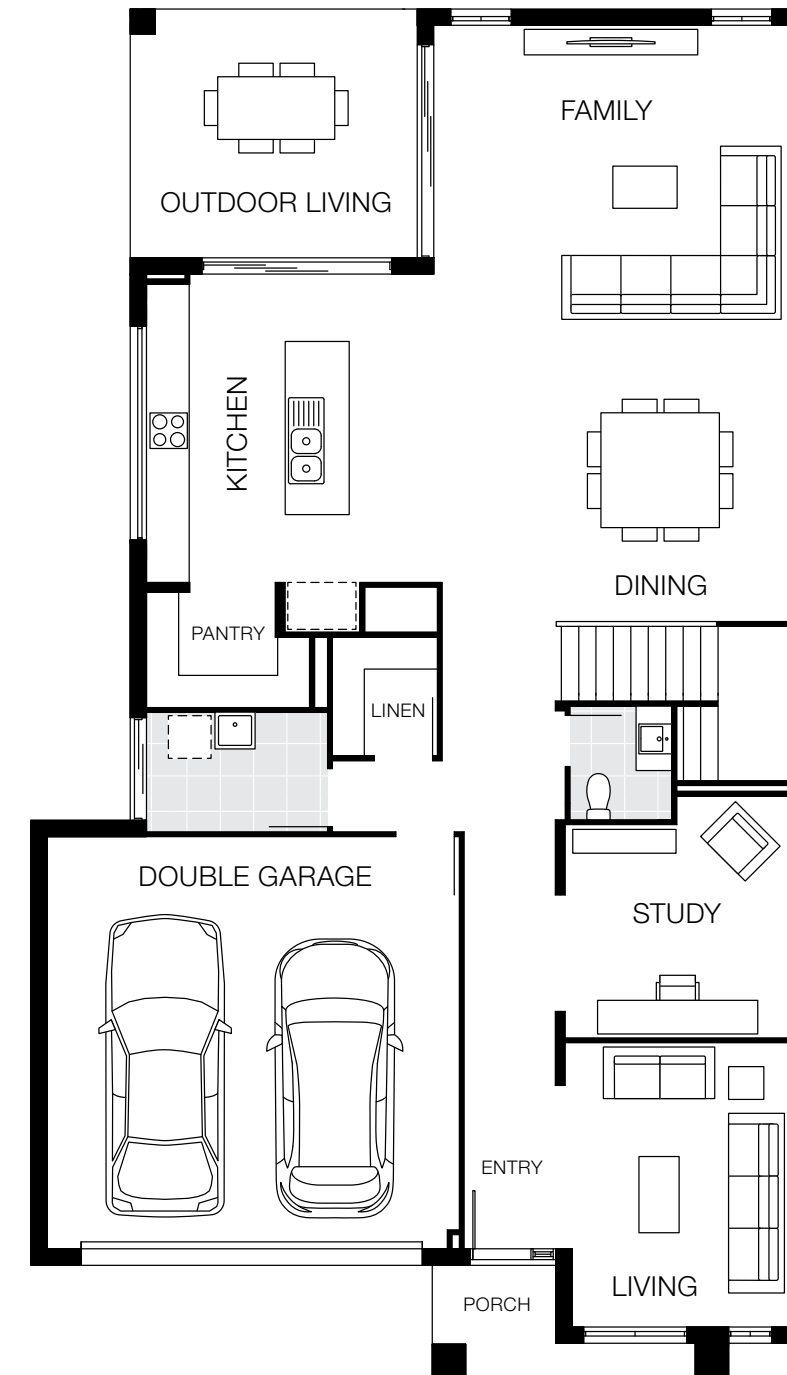


Bedrooms		Living Areas		Outdoor		Dimensions	
Master	4000 x 5170	Family	4590 x 5000	Outdoor Living	3800 x 4040	Length	18.06m
Bed 2	3100 x 3260	Dining	3320 x 3150			Width	10.90m
Bed 3	3100 x 3500	Living	4500 x 3150			Lower Area	173.16m <sup>2</sup>
Bed 4	4100 x 3500	Retreat	3310 x 4290			Upper Area	128.95m <sup>2</sup>
						Total Area	302.11m <sup>2</sup> (32.52sq)

# Baltimore 35

4 Bed 3 Living 2.5 Bath 2 Car

12.5m+ Lot Width



Bedrooms		Living Areas		Outdoor		Dimensions	
Master	4380 x 4660	Family	4590 x 5000	Outdoor Living	3500 x 4040	Length	19.26m
Bed 2	3160 x 3200	Dining	3800 x 3275			Width	10.90m
Bed 3	3500 x 3500	Living	4000 x 3050			Lower Area	184.51m <sup>2</sup>
Bed 4	3500 x 3500	Retreat	3650 x 4510			Upper Area	143.86m <sup>2</sup>
		Study	3000 x 3150			Total Area	328.37m <sup>2</sup> (35.35sq)

Floorplan based on Designer Facade. Floorplan is indicative only, conceptual in nature and subject to change. Floorplan may depict features and/or other products which are not included in the house design, not included in the house price and/or not available from Coral Homes. All measurements are in millimetres unless otherwise stated. Floorplan measurements are approximate and are not to scale. Lot width is based on Designer facade and is to be used as a guide only and may change due to developer covenants and Local Authority guidelines. ©Coral Homes Pty Ltd. The copyright in this floorplan is owned by or licensed to Coral Homes Pty Ltd and may not be reproduced, copied or dealt with in any manner which infringes the exclusive rights of Coral Homes Pty Ltd as prescribed by the Copyright Act 1968, without the express written authorisation of Coral Homes Pty Ltd.

Floorplan based on Designer Facade. Floorplan is indicative only, conceptual in nature and subject to change. Floorplan may depict features and/or other products which are not included in the house design, not included in the house price and/or not available from Coral Homes. All measurements are in millimetres unless otherwise stated. Floorplan measurements are approximate and are not to scale. Lot width is based on Designer facade and is to be used as a guide only and may change due to developer covenants and Local Authority guidelines. ©Coral Homes Pty Ltd. The copyright in this floorplan is owned by or licensed to Coral Homes Pty Ltd and may not be reproduced, copied or dealt with in any manner which infringes the exclusive rights of Coral Homes Pty Ltd as prescribed by the Copyright Act 1968, without the express written authorisation of Coral Homes Pty Ltd.

# Baltimore 38

4 Bed 3 Living 2.5 Bath 2 Car

12.5m+ Lot Width



Bedrooms		Living Areas		Outdoor		Dimensions	
Master	4580 x 4660	Living	4450 x 5000	Outdoor Living	4300 x 4040	Length	21.16m
Bed 2	4020 x 3500	Dining	3870 x 3275			Width	10.90m
Bed 3	3000 x 3500	Lounge	4700 x 3100			Lower Area	202.57m <sup>2</sup>
Bed 4	3000 x 3300	Retreat	3650 x 4300			Upper Area	153.44m <sup>2</sup>
		Study	3630 x 3260			Total Area	356.01m <sup>2</sup> (38.32sq)

# Baltimore 38MKII

5 Bed 3 Living 2.5 Bath 2 Car

12.5m+ Lot Width







Bedrooms		Living Areas		Outdoor		Dimensions	
Master	4580 x 4660	Living	4450 x 5000	Outdoor Living	4300 x 4040	Length	21.16m
Bed 2	3000 x 3300	Dining	3870 x 3275			Width	10.90m
Bed 3	3000 x 3050	Lounge	4700 x 3100			Lower Area	202.57m <sup>2</sup>
Bed 4	3420 x 2900	Retreat	3650 x 4300			Upper Area	153.44m <sup>2</sup>
Bed 5	3000 x 2900	Study	3630 x 3260			Total Area	356.01m <sup>2</sup> (38.32sq)

Floorplan based on Designer Facade. Floorplan is indicative only, conceptual in nature and subject to change. Floorplan may depict features and/or other products which are not included in the house design, not included in the house price and/or not available from Coral Homes. All measurements are in millimetres unless otherwise stated. Floorplan measurements are approximate and are not to scale. Lot width is based on Designer facade and is to be used as a guide only and may change due to developer covenants and Local Authority guidelines. ©Coral Homes Pty Ltd. The copyright in this floorplan is owned by or licensed to Coral Homes Pty Ltd and may not be reproduced, copied or dealt with in any manner which infringes the exclusive rights of Coral Homes Pty Ltd as prescribed by the Copyright Act 1968, without the express written authorisation of Coral Homes Pty Ltd.

Floorplan based on Designer Facade. Floorplan is indicative only, conceptual in nature and subject to change. Floorplan may depict features and/or other products which are not included in the house design, not included in the house price and/or not available from Coral Homes. All measurements are in millimetres unless otherwise stated. Floorplan measurements are approximate and are not to scale. Lot width is based on Designer facade and is to be used as a guide only and may change due to developer covenants and Local Authority guidelines. ©Coral Homes Pty Ltd. The copyright in this floorplan is owned by or licensed to Coral Homes Pty Ltd and may not be reproduced, copied or dealt with in any manner which infringes the exclusive rights of Coral Homes Pty Ltd as prescribed by the Copyright Act 1968, without the express written authorisation of Coral Homes Pty Ltd.

# Baltimore 41

 5 Bed
  3 Living
  3 Bath
  2 Car

12.5m+ Lot Width



## Bedrooms

Master	4700 x 4660
Bed 2	3350 x 4070
Bed 3	3500 x 3500
Bed 4	3350 x 3500
Guest	3500 x 3300

## Living Areas

Family	5000 x 5000
Dining	4200 x 3260
Living	4500 x 3100
Retreat	4150 x 4900

## Outdoor

Outdoor Living	4530 x 4040
----------------	-------------

## Dimensions

Length	22.73m
Width	10.90m
Lower Area	217.09m <sup>2</sup>
Upper Area	165.62m <sup>2</sup>
Total Area	382.71m <sup>2</sup> (41.20sq)

Floorplan based on Designer Facade. Floorplan is indicative only, conceptual in nature and subject to change. Floorplan may depict features and/or other products which are not included in the house design, not included in the house price and/or not available from Coral Homes. All measurements are in millimetres unless otherwise stated. Floorplan measurements are approximate and are not to scale. Lot width is based on Designer facade and is to be used as a guide only and may change due to developer covenants and Local Authority guidelines. ©Coral Homes Pty Ltd. The copyright in this floorplan is owned by or licensed to Coral Homes Pty Ltd and may not be reproduced, copied or dealt with in any manner which infringes the exclusive rights of Coral Homes Pty Ltd as prescribed by the Copyright Act 1968, without the express written authorisation of Coral Homes Pty Ltd.



Photography depicts items such as homewares that are not supplied by Coral Homes.

# Baltimore Design Options

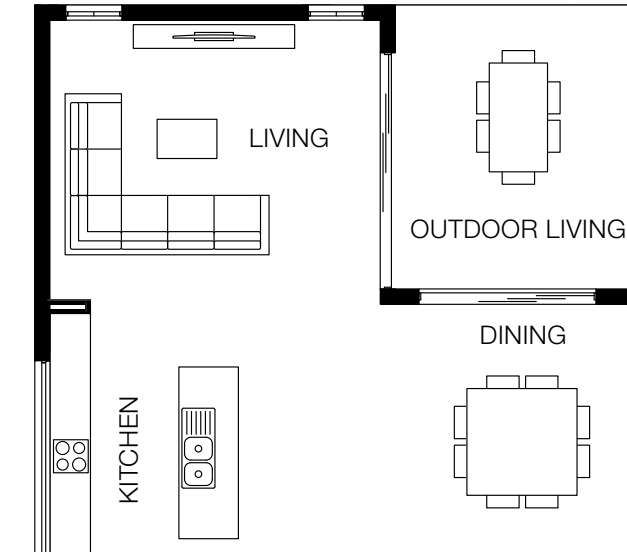
10m+ Lot Width

12.5m+ Lot Width

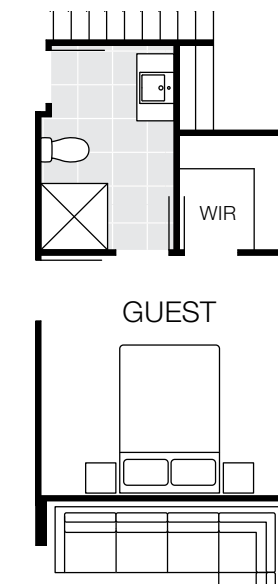
Master to Rear



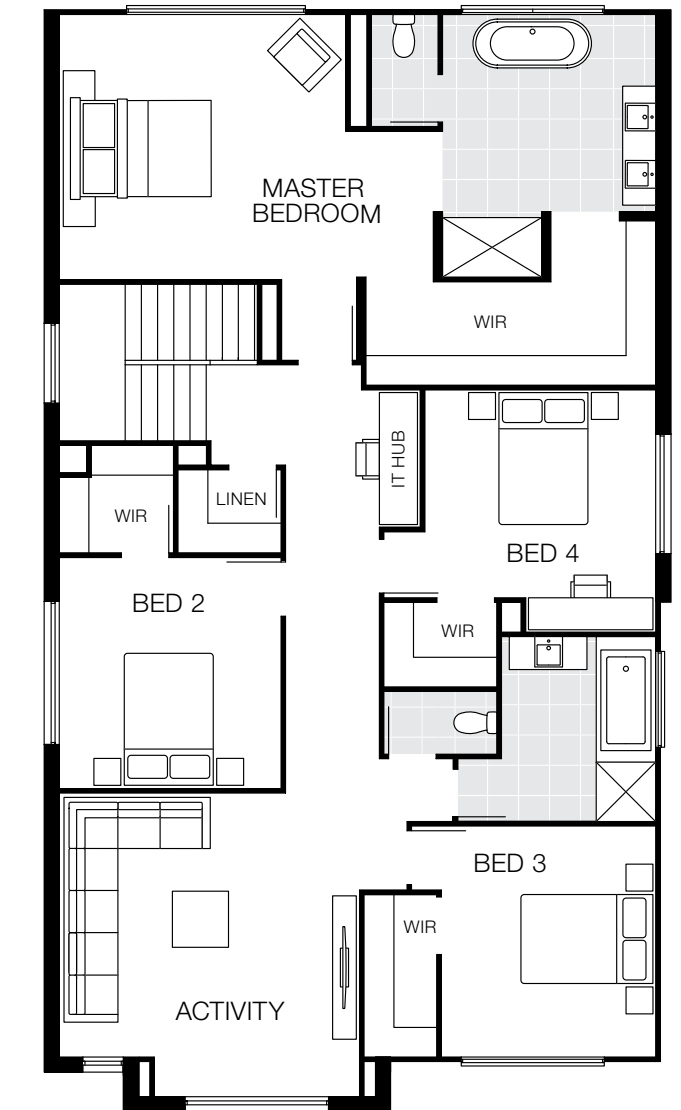
Mirror Outdoor



Guest Bedroom in lieu of Study



Master to Rear



# Baltimore Facade Options

10m+ Lot Width



Designer Facade



Hamptons Facade



Urban Facade



Vista Facade



Mornington Facade



# Baltimore Facade Options

12.5m+  
Lot Width

Designer Facade



Hamptons Facade



Hamptons Balcony Facade



Vantage Facade



Vista Facade





## Boston Series

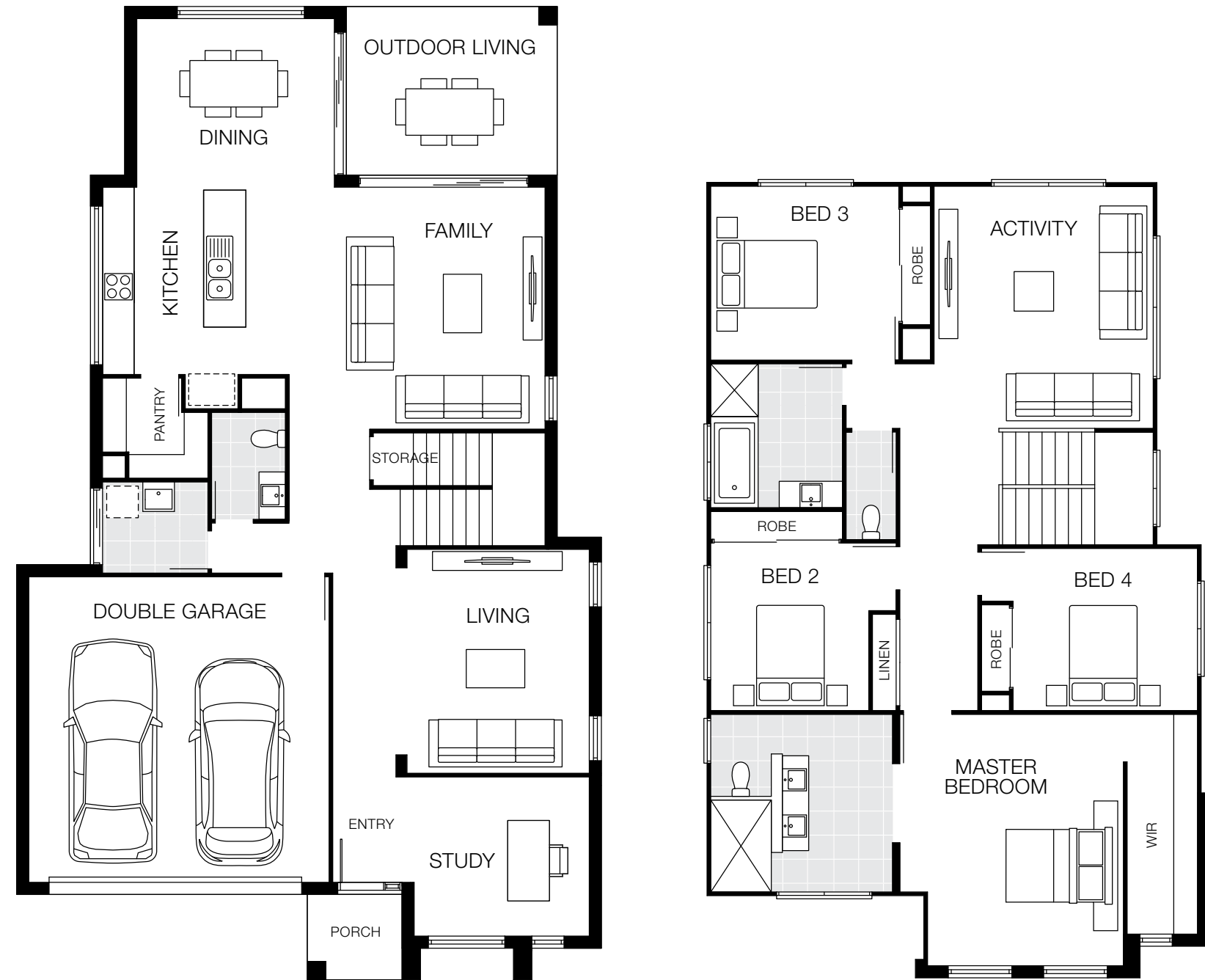
The Boston series has a variety of facade options to choose from and offers an impressive open-plan kitchen, dining and family area on the lower level that's well connected to the outdoor living area. Along with a dedicated study, downstairs your family will be spoilt for space with two separate living areas.

Upstairs you'll find five bedrooms in most plans adjoining a separate activity room; an ideal space for the kids to call their own. The crowning jewel in the Boston is the well-appointed and generously sized master suite, sitting proudly at the front of the home.

# Boston 32 MKII

4 Bed 3 Living 2.5 Bath 2 Car

12.5m+ Lot Width

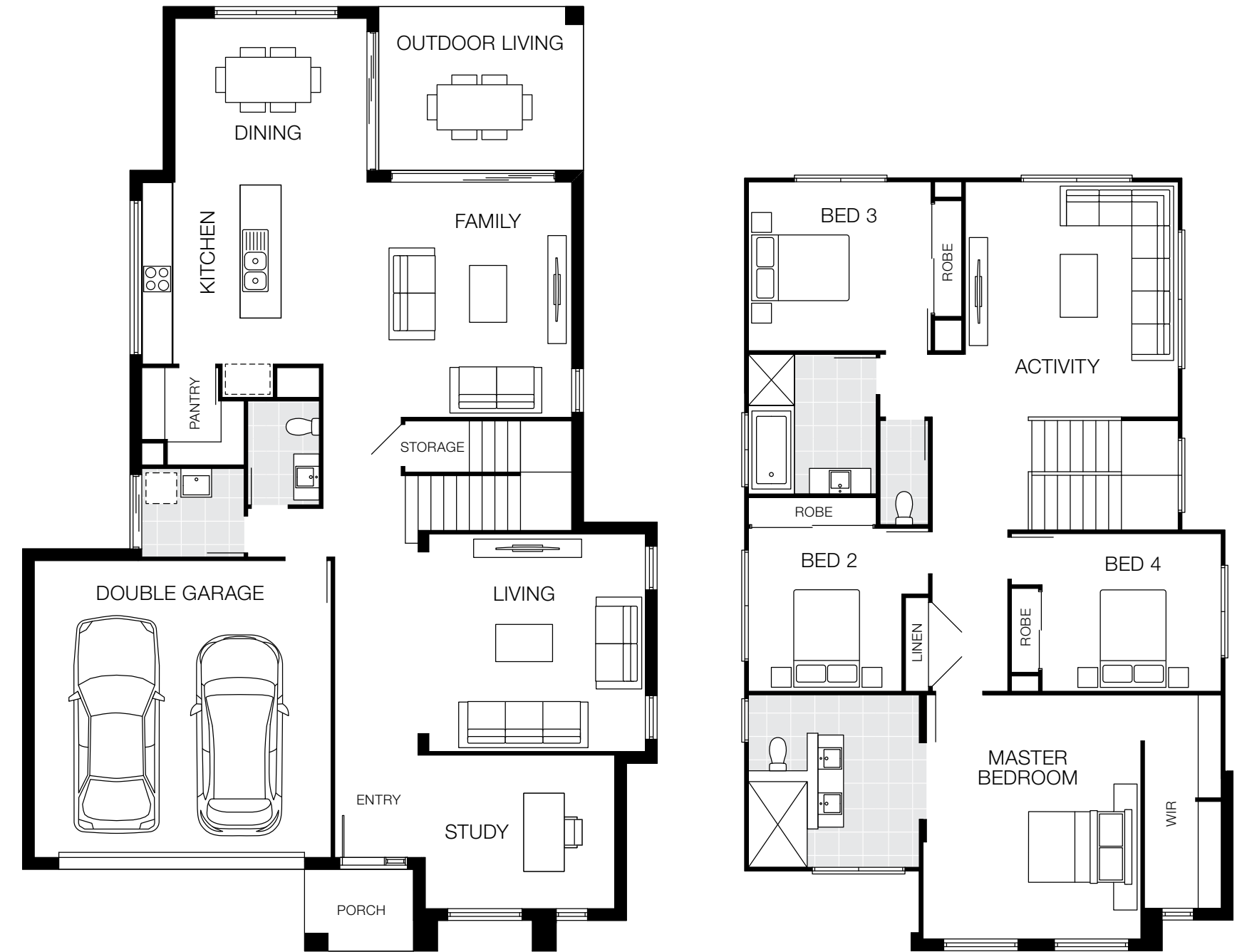


Bedrooms		Living Areas		Outdoor		Dimensions	
Master	4790 x 4230	Family	4590 x 4860	Outdoor Living	3200 x 4000	Length	18.47m
Bed 2	3185 x 3000	Living	4250 x 3450			Width	11.10m
Bed 3	3300 x 3570	Activity	4595 x 4160			Lower Area	168.57m <sup>2</sup>
Bed 4	3080 x 3500	Study	3020 x 3325			Upper Area	129.38m <sup>2</sup>
						Total Area	297.89m <sup>2</sup> (32.10sq)

# Boston 33

4 Bed 3 Living 2.5 Bath 2 Car

14m+ Lot Width



Bedrooms		Living Areas		Outdoor		Dimensions	
Master	4770 x 4190	Family	4590 x 4860	Outdoor Living	3200 x 4000	Length	18.45m
Bed 2	3185 x 3000	Living	4250 x 4230			Width	12.40m
Bed 3	3300 x 3570	Activity	4595 x 4160			Lower Area	176.49m <sup>2</sup>
Bed 4	3080 x 3500	Study	3000 x 3700			Upper Area	130.33m <sup>2</sup>
						Total Area	306.82m <sup>2</sup> (33.00sq)

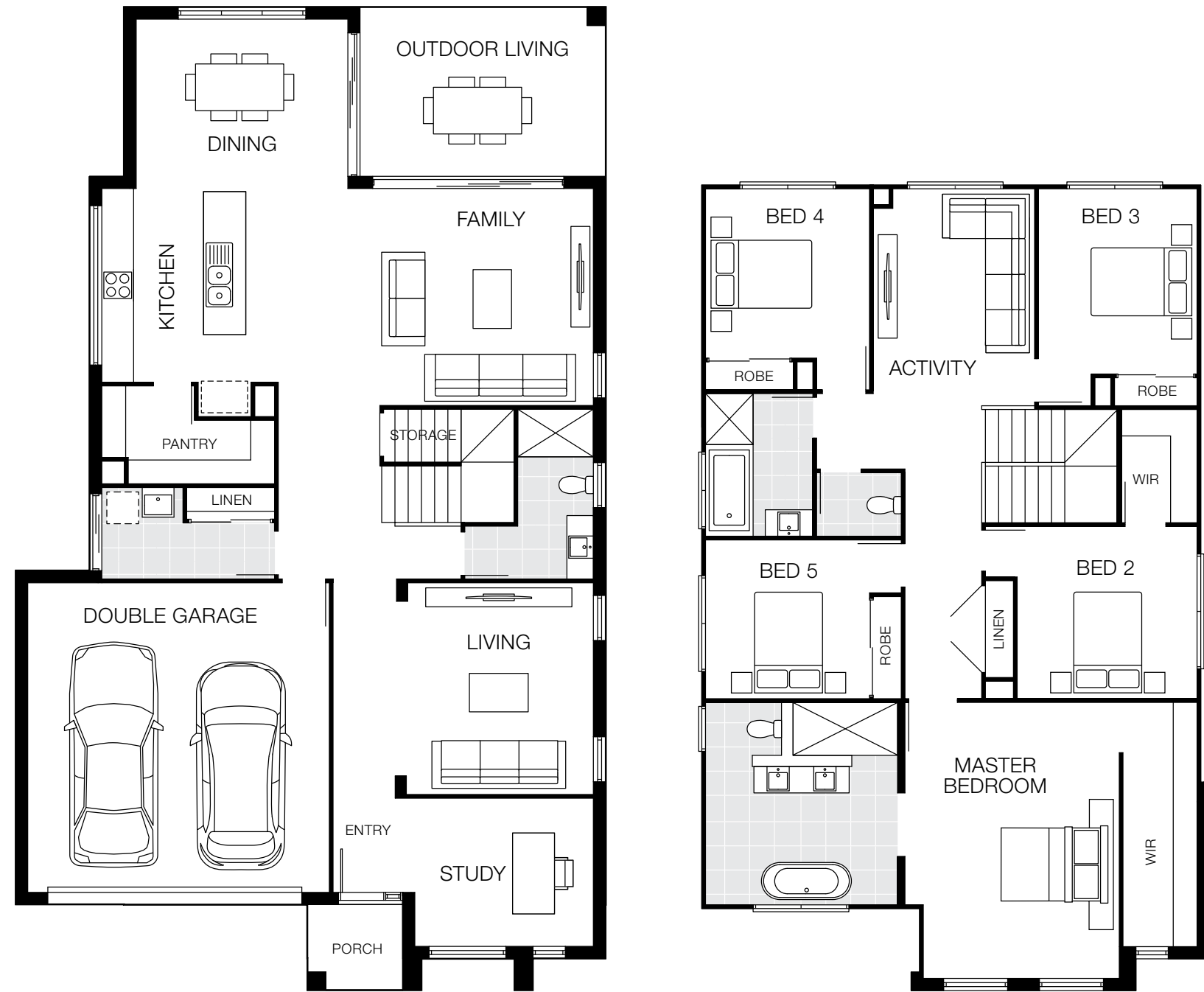
Floorplan based on Designer Facade. Floorplan is indicative only, conceptual in nature and subject to change. Floorplan may depict features and/or other products which are not included in the house design, not included in the house price and/or not available from Coral Homes. All measurements are in millimetres unless otherwise stated. Floorplan measurements are approximate and are not to scale. Lot width is based on Designer facade and is to be used as a guide only and may change due to developer covenants and Local Authority guidelines. ©Coral Homes Pty Ltd. The copyright in this floorplan is owned by or licensed to Coral Homes Pty Ltd and may not be reproduced, copied or dealt with in any manner which infringes the exclusive rights of Coral Homes Pty Ltd as prescribed by the Copyright Act 1968, without the express written authorisation of Coral Homes Pty Ltd.

Floorplan based on Designer Facade. Floorplan is indicative only, conceptual in nature and subject to change. Floorplan may depict features and/or other products which are not included in the house design, not included in the house price and/or not available from Coral Homes. All measurements are in millimetres unless otherwise stated. Floorplan measurements are approximate and are not to scale. Lot width is based on Designer facade and is to be used as a guide only and may change due to developer covenants and Local Authority guidelines. ©Coral Homes Pty Ltd. The copyright in this floorplan is owned by or licensed to Coral Homes Pty Ltd and may not be reproduced, copied or dealt with in any manner which infringes the exclusive rights of Coral Homes Pty Ltd as prescribed by the Copyright Act 1968, without the express written authorisation of Coral Homes Pty Ltd.

# Boston 34 MKII

5 Bed 3 Living 3 Bath 2 Car

12.5m+ Lot Width

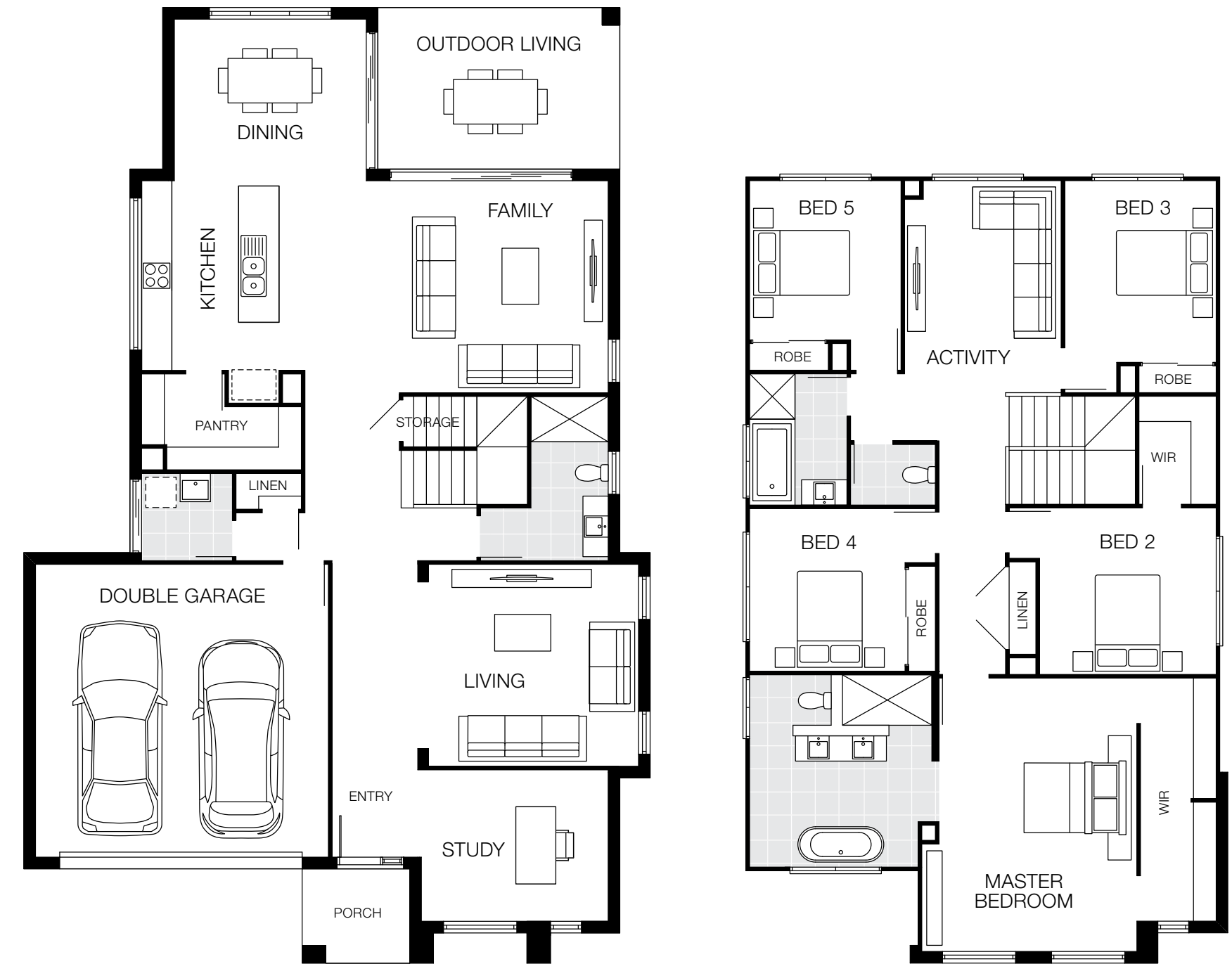


Bedrooms		Living Areas		Outdoor		Dimensions	
Master	5210 x 4050	Family	4100 x 5950	Outdoor Living	3200 x 4640	Length	18.73m
Bed 2	3400 x 3400	Living	4150 x 3530			Width	11.15m
Bed 3	3500 x 3000	Activity	4100 x 3050			Lower Area	180.63m <sup>2</sup>
Bed 4	3200 x 3100					Upper Area	138.35m <sup>2</sup>
Bed 5	3160 x 3100					Total Area	318.98m <sup>2</sup> (34.30sq)

# Boston 35

5 Bed 3 Living 3 Bath 2 Car

14m+ Lot Width



Bedrooms		Living Areas		Outdoor		Dimensions	
Master	5410 x 3900	Family	4200 x 6000	Outdoor Living	3200 x 4790	Length	18.92m
Bed 2	3300 x 3500	Living	4000 x 4150			Width	12.40m
Bed 3	3600 x 3000	Activity	4200 x 3100			Lower Area	188.44m <sup>2</sup>
Bed 4	3200 x 3080					Upper Area	139.60m <sup>2</sup>
Bed 5	3150 x 3000					Total Area	328.04m <sup>2</sup> (35.30sq)

Floorplan based on Designer Facade. Floorplan is indicative only, conceptual in nature and subject to change. Floorplan may depict features and/or other products which are not included in the house design, not included in the house price and/or not available from Coral Homes. All measurements are in millimetres unless otherwise stated. Floorplan measurements are approximate and are not to scale. Lot width is based on Designer facade and is to be used as a guide only and may change due to developer covenants and Local Authority guidelines. ©Coral Homes Pty Ltd. The copyright in this floorplan is owned by or licensed to Coral Homes Pty Ltd and may not be reproduced, copied or dealt with in any manner which infringes the exclusive rights of Coral Homes Pty Ltd as prescribed by the Copyright Act 1968, without the express written authorisation of Coral Homes Pty Ltd.

Floorplan based on Designer Facade. Floorplan is indicative only, conceptual in nature and subject to change. Floorplan may depict features and/or other products which are not included in the house design, not included in the house price and/or not available from Coral Homes. All measurements are in millimetres unless otherwise stated. Floorplan measurements are approximate and are not to scale. Lot width is based on Designer facade and is to be used as a guide only and may change due to developer covenants and Local Authority guidelines. ©Coral Homes Pty Ltd. The copyright in this floorplan is owned by or licensed to Coral Homes Pty Ltd and may not be reproduced, copied or dealt with in any manner which infringes the exclusive rights of Coral Homes Pty Ltd as prescribed by the Copyright Act 1968, without the express written authorisation of Coral Homes Pty Ltd.

# Boston 36 MKII

5 Bed 3 Living 3 Bath 2 Car

12.5m+ Lot Width



Bedrooms		Living Areas		Outdoor		Dimensions	
Master	5360 x 4050	Family	4550 x 5850	Outdoor Living	3300 x 4640	Length	19.62m
Bed 2	3600 x 3400	Living	4200 x 3720			Width	11.15m
Bed 3	3950 x 3000	Activity	4550 x 3050			Lower Area	189.27m <sup>2</sup>
Bed 4	3470 x 3100					Upper Area	145.88m <sup>2</sup>
Bed 5	3250 x 3350					Total Area	335.15m <sup>2</sup> (36.10sq)

# Boston 38

5 Bed 3 Living 3 Bath 2 Car

14m+ Lot Width



Bedrooms		Living Areas		Outdoor		Dimensions	
Master	5910 x 3900	Family	4600 x 6000	Outdoor Living	3300 x 4790	Length	20.12m
Bed 2	3500 x 3500	Living	4530 x 4235			Width	12.47m
Bed 3	4000 x 3100	Activity	4600 x 3100			Lower Area	203.04m <sup>2</sup>
Bed 4	3350 x 3100					Upper Area	152.73m <sup>2</sup>
Bed 5	3300 x 3100					Total Area	355.77m <sup>2</sup> (38.20sq)

Floorplan based on Designer Facade. Floorplan is indicative only, conceptual in nature and subject to change. Floorplan may depict features and/or other products which are not included in the house design, not included in the house price and/or not available from Coral Homes. All measurements are in millimetres unless otherwise stated. Floorplan measurements are approximate and are not to scale. Lot width is based on Designer facade and is to be used as a guide only and may change due to developer covenants and Local Authority guidelines. ©Coral Homes Pty Ltd. The copyright in this floorplan is owned by or licensed to Coral Homes Pty Ltd and may not be reproduced, copied or dealt with in any manner which infringes the exclusive rights of Coral Homes Pty Ltd as prescribed by the Copyright Act 1968, without the express written authorisation of Coral Homes Pty Ltd.

Floorplan based on Designer Facade. Floorplan is indicative only, conceptual in nature and subject to change. Floorplan may depict features and/or other products which are not included in the house design, not included in the house price and/or not available from Coral Homes. All measurements are in millimetres unless otherwise stated. Floorplan measurements are approximate and are not to scale. Lot width is based on Designer facade and is to be used as a guide only and may change due to developer covenants and Local Authority guidelines. ©Coral Homes Pty Ltd. The copyright in this floorplan is owned by or licensed to Coral Homes Pty Ltd and may not be reproduced, copied or dealt with in any manner which infringes the exclusive rights of Coral Homes Pty Ltd as prescribed by the Copyright Act 1968, without the express written authorisation of Coral Homes Pty Ltd.

# Boston 42

5 Bed 3 Living 3 Bath 2 Car

14m+ Lot Width



Bedrooms		Living Areas		Outdoor		Dimensions	
Master	6450 x 3900	Family	4800 x 6270	Outdoor Living	3500 x 4930	Length	21.49m
Bed 2	3700 x 3500	Living	4800 x 4480			Width	12.72m
Bed 3	4200 x 3100	Activity	4800 x 3100			Lower Area	220.61m <sup>2</sup>
Bed 4	3650 x 3100					Upper Area	167.05m <sup>2</sup>
Bed 5	3700 x 3100					Total Area	387.66m <sup>2</sup> (41.70sq)

# Boston 42 MKII

4 Bed 3 Living 3 Bath 2 Car

14m+ Lot Width



Bedrooms		Living Areas		Outdoor		Dimensions	
Master	4800 x 5510	Family	4800 x 4935	Outdoor Living	3500 x 4935	Length	21.49m
Bed 2	3300 x 4005	Living	4800 x 3985			Width	12.04m
Bed 3	3510 x 4150	Retreat	4800 x 6075			Lower Area	218.82m <sup>2</sup>
Bed 4	3810 x 3650	Study	3500 x 3945			Upper Area	167.05m <sup>2</sup>
						Total Area	385.87m <sup>2</sup> (41.54sq)

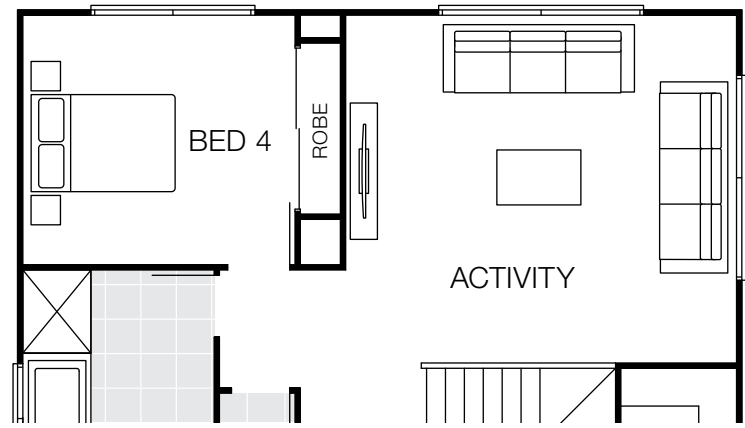
Floorplan based on Designer Facade. Floorplan is indicative only, conceptual in nature and subject to change. Floorplan may depict features and/or other products which are not included in the house design, not included in the house price and/or not available from Coral Homes. All measurements are in millimetres unless otherwise stated. Floorplan measurements are approximate and are not to scale. Lot width is based on Designer facade and is to be used as a guide only and may change due to developer covenants and Local Authority guidelines. ©Coral Homes Pty Ltd. The copyright in this floorplan is owned by or licensed to Coral Homes Pty Ltd and may not be reproduced, copied or dealt with in any manner which infringes the exclusive rights of Coral Homes Pty Ltd as prescribed by the Copyright Act 1968, without the express written authorisation of Coral Homes Pty Ltd.

Floorplan based on Designer Facade. Floorplan is indicative only, conceptual in nature and subject to change. Floorplan may depict features and/or other products which are not included in the house design, not included in the house price and/or not available from Coral Homes. All measurements are in millimetres unless otherwise stated. Floorplan measurements are approximate and are not to scale. Lot width is based on Designer facade and is to be used as a guide only and may change due to developer covenants and Local Authority guidelines. ©Coral Homes Pty Ltd. The copyright in this floorplan is owned by or licensed to Coral Homes Pty Ltd and may not be reproduced, copied or dealt with in any manner which infringes the exclusive rights of Coral Homes Pty Ltd as prescribed by the Copyright Act 1968, without the express written authorisation of Coral Homes Pty Ltd.

# Boston Design Options

See website for more design options

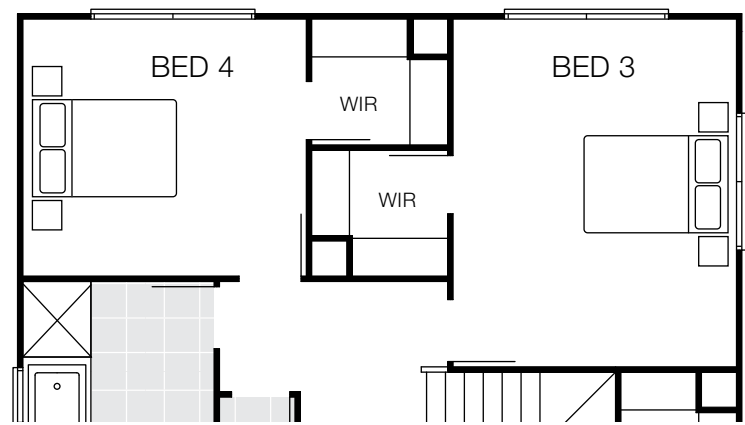
Activity in lieu of Bed 5



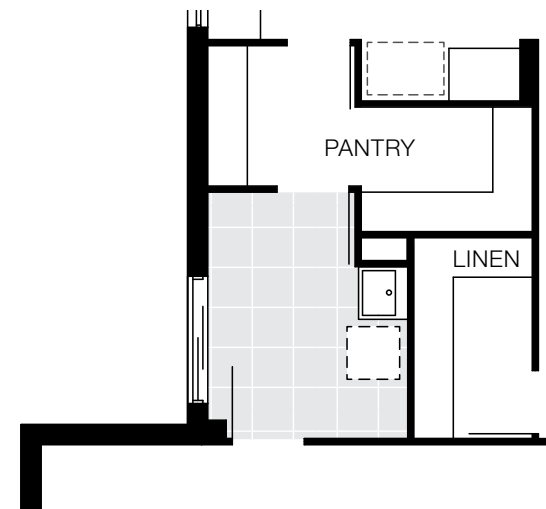
Guest Bedroom with Ensuite



WIR in lieu of Activity



Walk-through Laundry



# Boston Facade Options

14m<sup>+</sup> Lot Width

Brighton Facade



Designer Facade



Vantage Facade



Vaucluse Facade



Hamptons Balcony Facade







## Monash Series

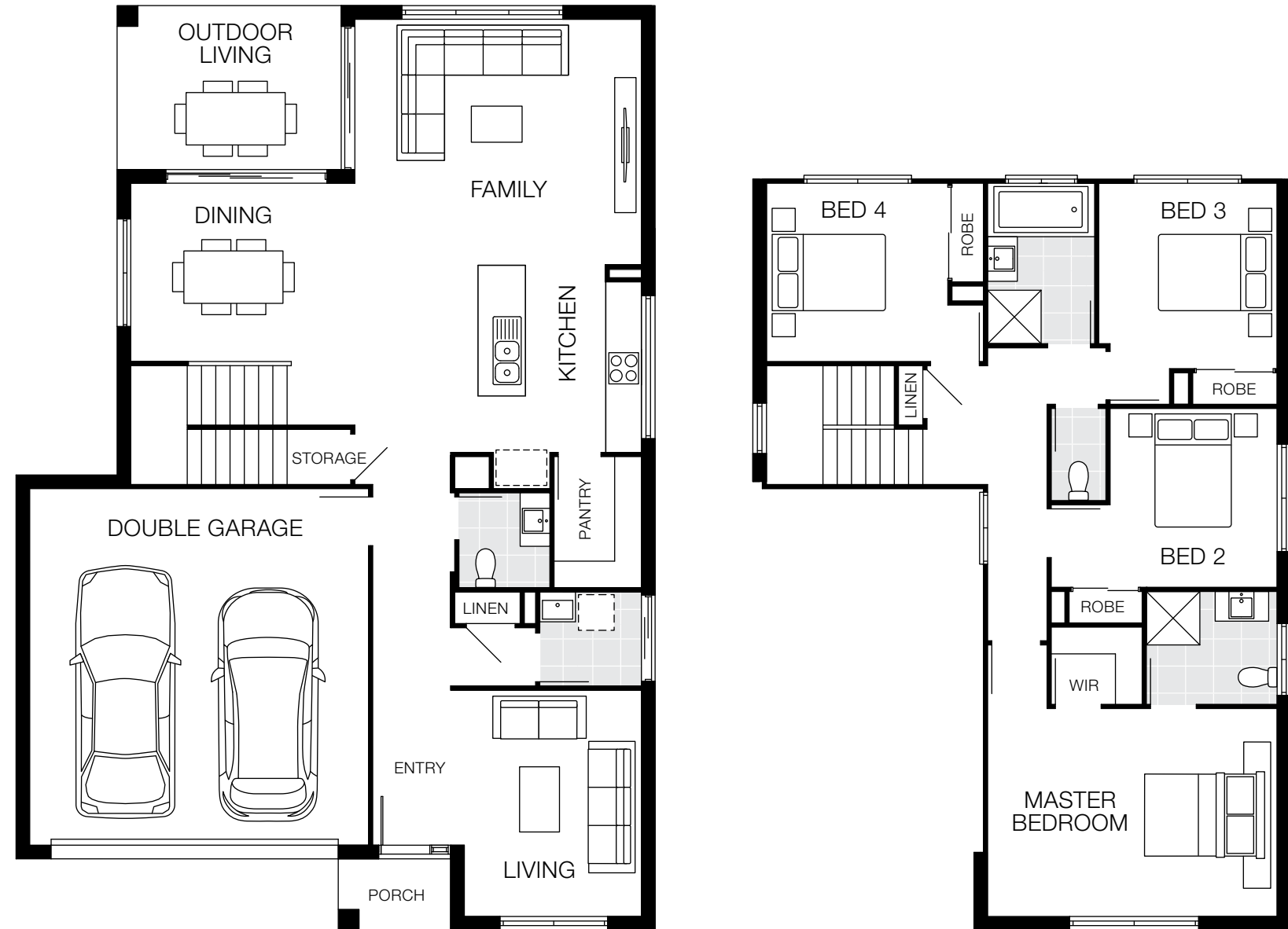
The Monash series is a two-storey home that's been brilliantly crafted to fit on a 12.5m+ wide lot. The home has a variety of floorplans to choose from, including multiple design options.

The Monash has an impressive alfresco area for entertaining and allows up to six bedrooms and four living areas, making it perfect for multi-generational or large families.

# Monash 25

4 Bed 3 Living 2.5 Bath 2 Car

12.5m+ Lot Width



Bedrooms		Living Areas		Outdoor		Dimensions	
Master	3500 x 4870	Family	4140 x 4820	Outdoor Living	2760 x 3770	Length	15.56m
Bed 2	3010 x 3000	Living	3810 x 2980			Width	10.75m
Bed 3	3120 x 3000					Lower Area	147.34m <sup>2</sup>
Bed 4	3000 x 3050					Upper Area	85.76m <sup>2</sup>
						Total Area	233.10m <sup>2</sup> (25.10sq)

# Monash 27

4 Bed 3 Living 2.5 Bath 2 Car

12.5m+ Lot Width



Bedrooms		Living Areas		Outdoor		Dimensions	
Master	3650 x 4520	Family	4250 x 4820	Outdoor Living	2790 x 3620	Length	15.54m
Bed 2	3210 x 3300	Living	3620 x 2980			Width	10.75m
Bed 3	3420 x 3000	Dining	3080 x 3620			Lower Area	146.34m <sup>2</sup>
Bed 4	3000 x 2850	Activity	3230 x 3620			Upper Area	107.97m <sup>2</sup>
						Total Area	254.31m <sup>2</sup> (27.40sq)

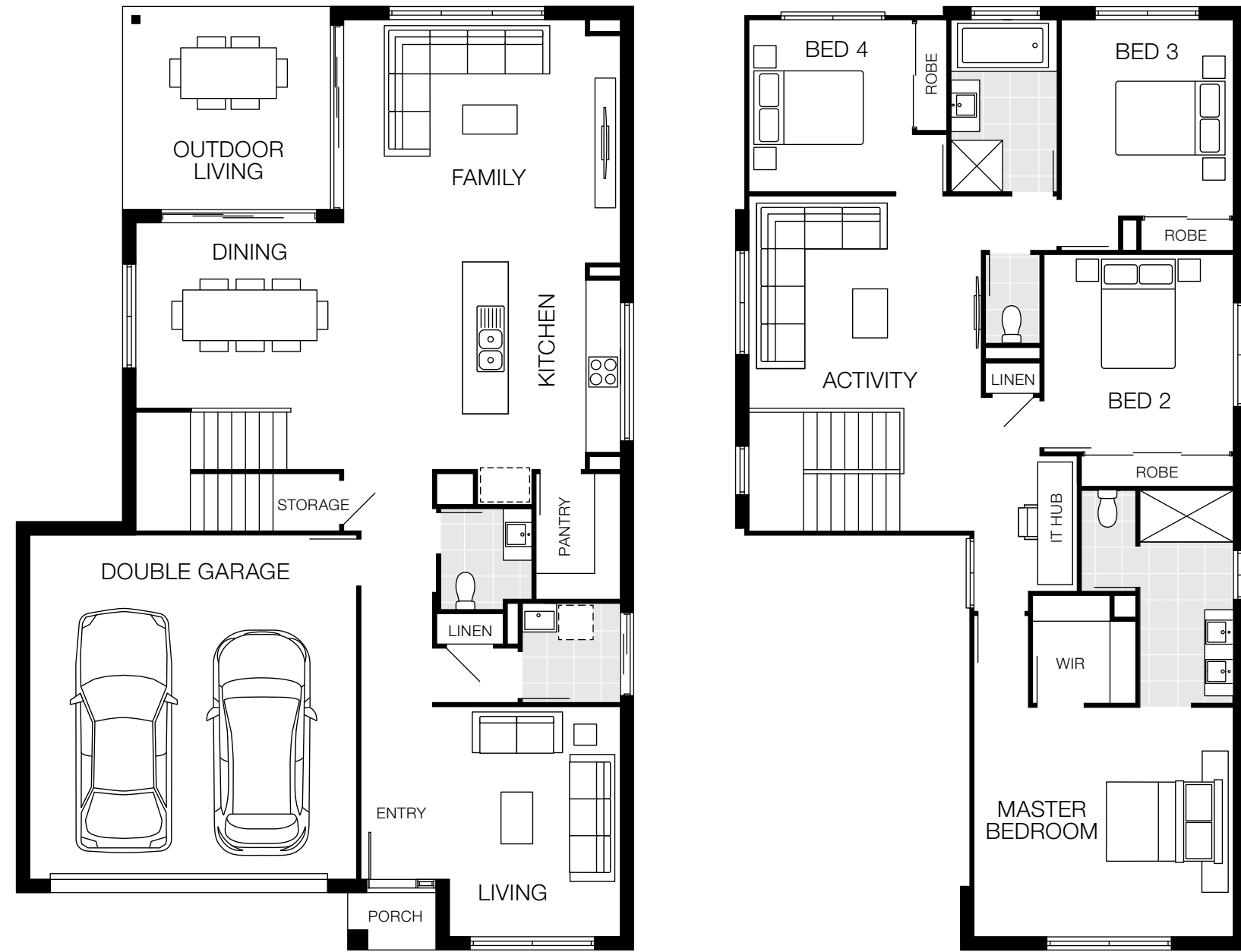
Floorplan based on Designer Facade. Floorplan is indicative only, conceptual in nature and subject to change. Floorplan may depict features and/or other products which are not included in the house design, not included in the house price and/or not available from Coral Homes. All measurements are in millimetres unless otherwise stated. Floorplan measurements are approximate and are not to scale. Lot width is based on Designer facade and is to be used as a guide only and may change due to developer covenants and Local Authority guidelines. ©Coral Homes Pty Ltd. The copyright in this floorplan is owned by or licensed to Coral Homes Pty Ltd and may not be reproduced, copied or dealt with in any manner which infringes the exclusive rights of Coral Homes Pty Ltd as prescribed by the Copyright Act 1968, without the express written authorisation of Coral Homes Pty Ltd.

Floorplan based on Designer Facade. Floorplan is indicative only, conceptual in nature and subject to change. Floorplan may depict features and/or other products which are not included in the house design, not included in the house price and/or not available from Coral Homes. All measurements are in millimetres unless otherwise stated. Floorplan measurements are approximate and are not to scale. Lot width is based on Designer facade and is to be used as a guide only and may change due to developer covenants and Local Authority guidelines. ©Coral Homes Pty Ltd. The copyright in this floorplan is owned by or licensed to Coral Homes Pty Ltd and may not be reproduced, copied or dealt with in any manner which infringes the exclusive rights of Coral Homes Pty Ltd as prescribed by the Copyright Act 1968, without the express written authorisation of Coral Homes Pty Ltd.

# Monash 29

4 Bed 3 Living 2.5 Bath 2 Car

12.5m+ Lot Width

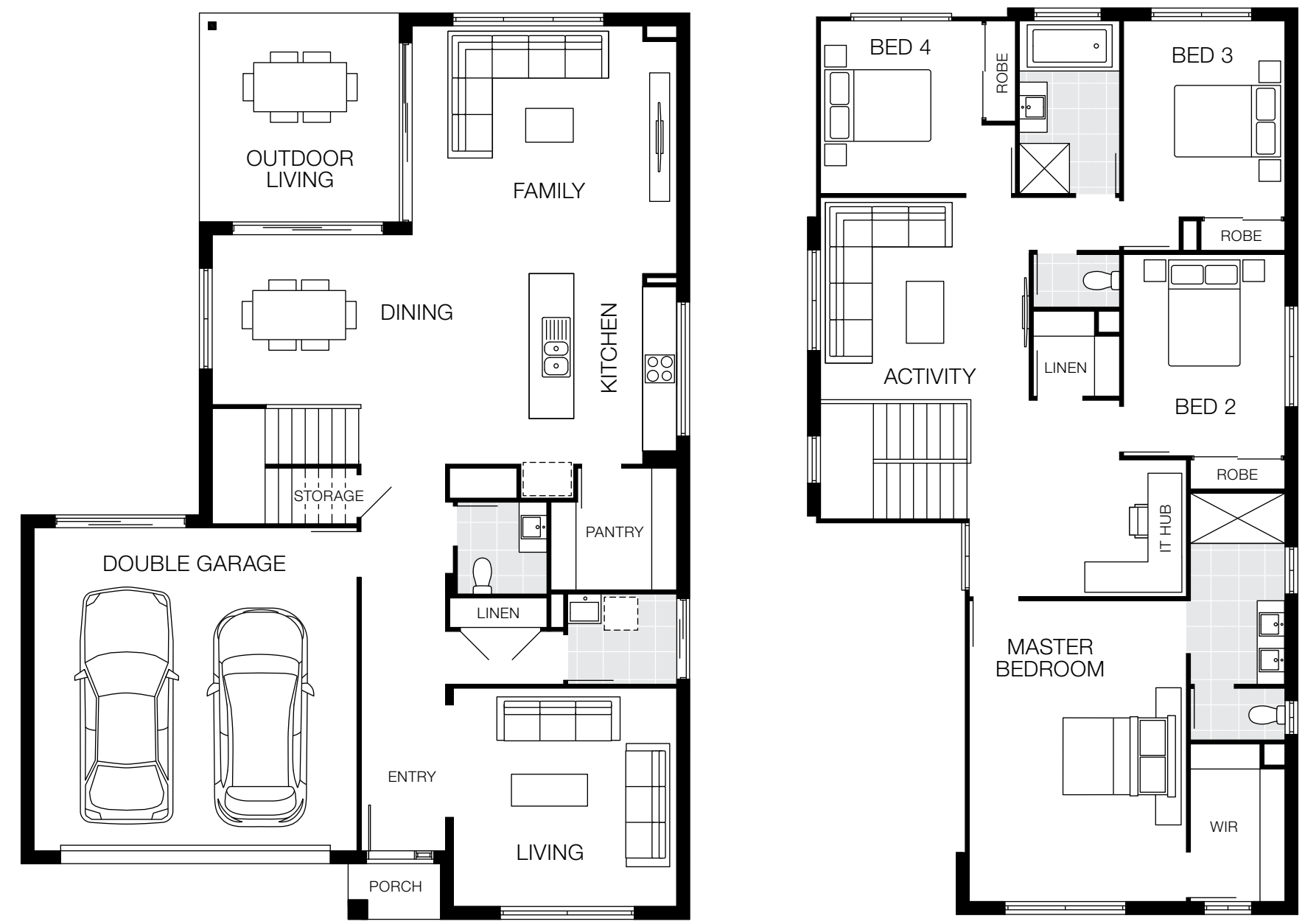


Bedrooms		Living Areas		Outdoor		Dimensions	
Master	4000 x 4520	Family	4240 x 4820	Outdoor Living	3540 x 3620	Length	16.44m
Bed 2	3440 x 3300	Living	4010 x 2980			Width	10.75m
Bed 3	3420 x 3000	Activity	3700 x 4050			Lower Area	154.35m <sup>2</sup>
Bed 4	3000 x 2850					Upper Area	115.86m <sup>2</sup>
						Total Area	270.21m <sup>2</sup> (29.10sq)

# Monash 30

4 Bed 3 Living 2.5 Bath 2 Car

14m+ Lot Width



Bedrooms		Living Areas		Outdoor		Dimensions	
Master	5350 x 3900	Family	4450 x 4750	Outdoor Living	3750 x 3590	Length	16.27m
Bed 2	3620 x 2900	Living	3920 x 4010			Width	12.00m
Bed 3	3520 x 2900	Dining	3050 x 3590			Lower Area	160.53m <sup>2</sup>
Bed 4	3100 x 2900	Activity	3630 x 3750			Upper Area	122.29m <sup>2</sup>
						Total Area	282.82m <sup>2</sup> (30.44sq)

Floorplan based on Designer Facade. Floorplan is indicative only, conceptual in nature and subject to change. Floorplan may depict features and/or other products which are not included in the house design, not included in the house price and/or not available from Coral Homes. All measurements are in millimetres unless otherwise stated. Floorplan measurements are approximate and are not to scale. Lot width is based on Designer facade and is to be used as a guide only and may change due to developer covenants and Local Authority guidelines. ©Coral Homes Pty Ltd. The copyright in this floorplan is owned by or licensed to Coral Homes Pty Ltd and may not be reproduced, copied or dealt with in any manner which infringes the exclusive rights of Coral Homes Pty Ltd as prescribed by the Copyright Act 1968, without the express written authorisation of Coral Homes Pty Ltd.

Floorplan based on Designer Facade. Floorplan is indicative only, conceptual in nature and subject to change. Floorplan may depict features and/or other products which are not included in the house design, not included in the house price and/or not available from Coral Homes. All measurements are in millimetres unless otherwise stated. Floorplan measurements are approximate and are not to scale. Lot width is based on Designer facade and is to be used as a guide only and may change due to developer covenants and Local Authority guidelines. ©Coral Homes Pty Ltd. The copyright in this floorplan is owned by or licensed to Coral Homes Pty Ltd and may not be reproduced, copied or dealt with in any manner which infringes the exclusive rights of Coral Homes Pty Ltd as prescribed by the Copyright Act 1968, without the express written authorisation of Coral Homes Pty Ltd.

# Monash 31

5 Bed 3 Living 2.5 Bath 2 Car

12.5m+ Lot Width



Bedrooms		Living Areas		Outdoor		Dimensions	
Master	4000 x 4520	Family	3900 x 4820	Outdoor Living	4000 x 3620	Length	18.10m
Bed 2	3520 x 3300	Dining	3400 x 3620			Width	10.75m
Bed 3	3640 x 3000	Living	3800 x 2980			Lower Area	165.94m <sup>2</sup>
Bed 4	3200 x 2850	Activity	4130 x 4050			Upper Area	126.49m <sup>2</sup>
Bed 5	3000 x 2700					Total Area	292.43m <sup>2</sup> (31.48sq)

# Monash 32

4 Bed 3 Living 2.5 Bath 2 Car

14m+ Lot Width



Bedrooms		Living Areas		Outdoor		Dimensions	
Master	5350 x 4050	Family	4840 x 4900	Outdoor Living	4140 x 3690	Length	16.84m
Bed 2	3900 x 3000	Living	3920 x 4160			Width	12.25m
Bed 3	3810 x 3000	Activity	3920 x 3900			Lower Area	169.77m <sup>2</sup>
Bed 4	3380 x 3000					Upper Area	131.44m <sup>2</sup>
						Total Area	301.21m <sup>2</sup> (32.42sq)

Floorplan based on Designer Facade. Floorplan is indicative only, conceptual in nature and subject to change. Floorplan may depict features and/or other products which are not included in the house design, not included in the house price and/or not available from Coral Homes. All measurements are in millimetres unless otherwise stated. Floorplan measurements are approximate and are not to scale. Lot width is based on Designer facade and is to be used as a guide only and may change due to developer covenants and Local Authority guidelines. ©Coral Homes Pty Ltd. The copyright in this floorplan is owned by or licensed to Coral Homes Pty Ltd and may not be reproduced, copied or dealt with in any manner which infringes the exclusive rights of Coral Homes Pty Ltd as prescribed by the Copyright Act 1968, without the express written authorisation of Coral Homes Pty Ltd.

Floorplan based on Designer Facade. Floorplan is indicative only, conceptual in nature and subject to change. Floorplan may depict features and/or other products which are not included in the house design, not included in the house price and/or not available from Coral Homes. All measurements are in millimetres unless otherwise stated. Floorplan measurements are approximate and are not to scale. Lot width is based on Designer facade and is to be used as a guide only and may change due to developer covenants and Local Authority guidelines. ©Coral Homes Pty Ltd. The copyright in this floorplan is owned by or licensed to Coral Homes Pty Ltd and may not be reproduced, copied or dealt with in any manner which infringes the exclusive rights of Coral Homes Pty Ltd as prescribed by the Copyright Act 1968, without the express written authorisation of Coral Homes Pty Ltd.

# Monash 32 MKII

4 Bed 4 Living 2.5 Bath 2 Car

13m+ Lot Width



Bedrooms		Living Areas		Outdoor		Dimensions	
Master	3720 x 4820	Family	4240 x 4820	Outdoor Living	3540 x 3620	Length	21.04m
Bed 2	3390 x 3300	Dining	3230 x 3620			Width	11.81m
Bed 3	3150 x 3000	Living	4010 x 3430			Lower Area	183.38m <sup>2</sup>
Bed 4	3000 x 2850	Media	4400 x 4820			Upper Area	116.51m <sup>2</sup>
		Activity	3700 x 4050			Total Area	299.89m <sup>2</sup> (32.28sq)

Floorplan based on Designer Facade. Floorplan is indicative only, conceptual in nature and subject to change. Floorplan may depict features and/or other products which are not included in the house design, not included in the house price and/or not available from Coral Homes. All measurements are in millimetres unless otherwise stated. Floorplan measurements are approximate and are not to scale. Lot width is based on Designer facade and is to be used as a guide only and may change due to developer covenants and Local Authority guidelines. ©Coral Homes Pty Ltd. The copyright in this floorplan is owned by or licensed to Coral Homes Pty Ltd and may not be reproduced, copied or dealt with in any manner which infringes the exclusive rights of Coral Homes Pty Ltd as prescribed by the Copyright Act 1968, without the express written authorisation of Coral Homes Pty Ltd.

# Monash 33

6 Bed 3 Living 2.5 Bath 2 Car

14m+ Lot Width



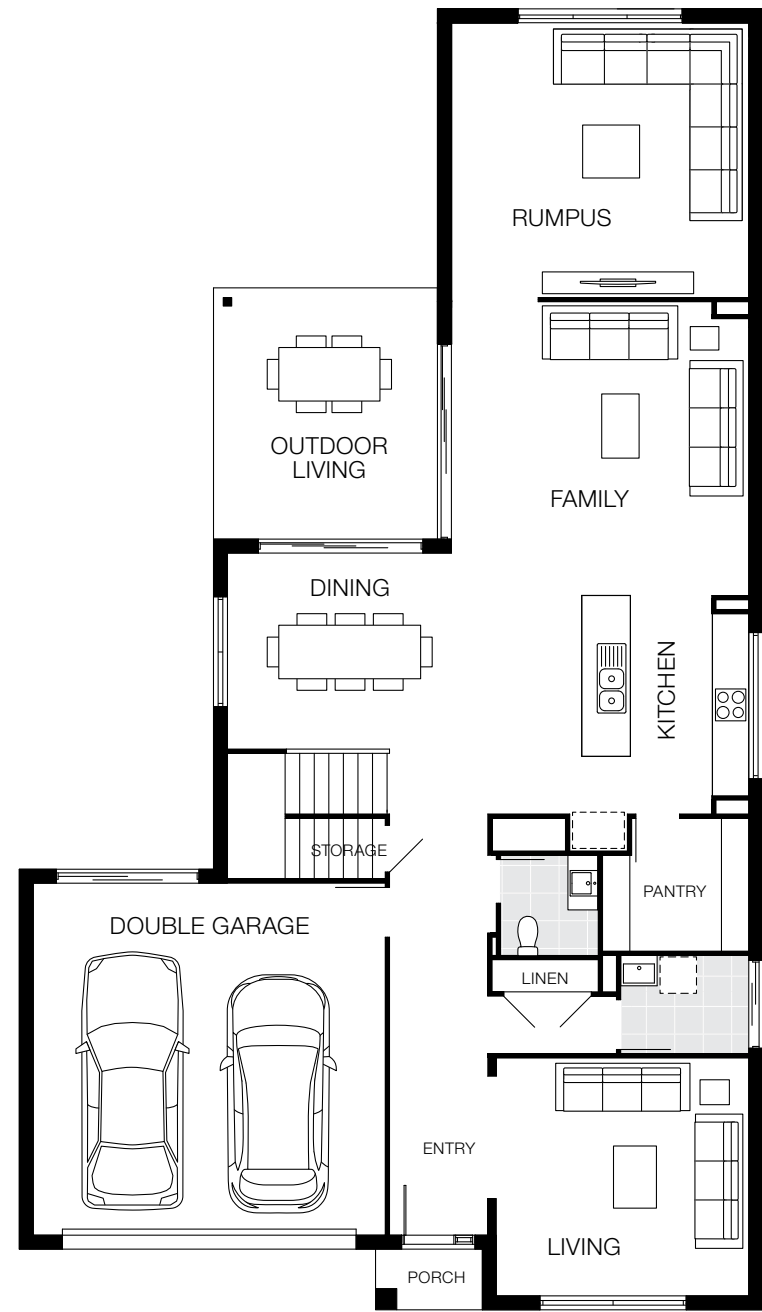
Bedrooms		Living Areas		Outdoor		Dimensions	
Master	4380 x 3970	Family	3850 x 4800	Outdoor Living	3950 x 3740	Length	17.95m
Bed 2	3000 x 3000	Dining	3400 x 3740			Width	11.87m
Bed 3	3370 x 3000	Living	3700 x 4010			Lower Area	175.35m <sup>2</sup>
Bed 4	3670 x 3000	Activity	4030 x 3850			Upper Area	135.66m <sup>2</sup>
Bed 5	3250 x 3000					Total Area	311.01m <sup>2</sup> (33.48sq)
Bed 6	3000 x 3480						

Floorplan based on Designer Facade. Floorplan is indicative only, conceptual in nature and subject to change. Floorplan may depict features and/or other products which are not included in the house design, not included in the house price and/or not available from Coral Homes. All measurements are in millimetres unless otherwise stated. Floorplan measurements are approximate and are not to scale. Lot width is based on Designer facade and is to be used as a guide only and may change due to developer covenants and Local Authority guidelines. ©Coral Homes Pty Ltd. The copyright in this floorplan is owned by or licensed to Coral Homes Pty Ltd and may not be reproduced, copied or dealt with in any manner which infringes the exclusive rights of Coral Homes Pty Ltd as prescribed by the Copyright Act 1968, without the express written authorisation of Coral Homes Pty Ltd.

# Monash Design Options

See website for more design options

Rumpus Room



Master to Rear



Design Options based on Monash 32. These options are only available on certain home designs. Floorplans are indicative only, conceptual in nature and subject to change. Floorplans may depict features and/or other products which are not included in the house design, not included in the house price and/or not available from Coral Homes. © Coral Homes Pty Ltd. The copyright in these floorplans are owned by or licensed to Coral Homes Pty Ltd and may not be reproduced, copied or dealt with in any manner which infringes the exclusive rights of Coral Homes Pty Ltd as prescribed by the Copyright Act 1968, without the express written authorisation of Coral Homes Pty Ltd.

# Monash Facade Options

12.5m+  
Lot Width

Designer Facade



Hamptons Facade



Vista Facade



Piermont Facade



Vaucluse Facade







## New Hampshire Series

Carefully designed to fit comfortably on a 10m+ wide block, this home is a different kind of innovation. It uses every inch of space, and despite its modest width – it still packs a punch. Everything you could need and more is included in this home.

The New Hampshire's' clever floorplan focuses on storage solutions and liveability. If you're after a warm and welcoming home in a compact design, the New Hampshire is the home for you.



# New Hampshire 33

 4 Bed
  3 Living
  2.5 Bath
  2 Car

10m+ Lot Width



## Bedrooms

Master	4000 x 3775
Bed 2	3840 x 4790
Bed 3	3310 x 2950
Bed 4	3160 x 3000

## Living Areas

Dining	3860 x 3570
Living	4120 x 4770
Media	3700 x 3430
Retreat	4100 x 4180

## Outdoor

Outdoor Living	7195 x 7245
----------------	-------------

## Dimensions

Length	24.69m
Width	8.04m
Lower Area	178.84m <sup>2</sup>
Upper Area	127.09m <sup>2</sup>
Total Area	305.93m <sup>2</sup> (41.20sq)

Floorplan based on Designer Facade. Floorplan is indicative only, conceptual in nature and subject to change. Floorplan may depict features and/or other products which are not included in the house design, not included in the house price and/or not available from Coral Homes. All measurements are in millimetres unless otherwise stated. Floorplan measurements are approximate and are not to scale. Lot width is based on Designer facade and is to be used as a guide only and may change due to developer covenants and Local Authority guidelines. ©Coral Homes Pty Ltd. The copyright in this floorplan is owned by or licensed to Coral Homes Pty Ltd and may not be reproduced, copied or dealt with in any manner which infringes the exclusive rights of Coral Homes Pty Ltd as prescribed by the Copyright Act 1968, without the express written authorisation of Coral Homes Pty Ltd.



Photography depicts items such as homewares, furniture, landscaping, fencing and television that are not supplied by Coral Homes.

# New Hampshire Facade Options

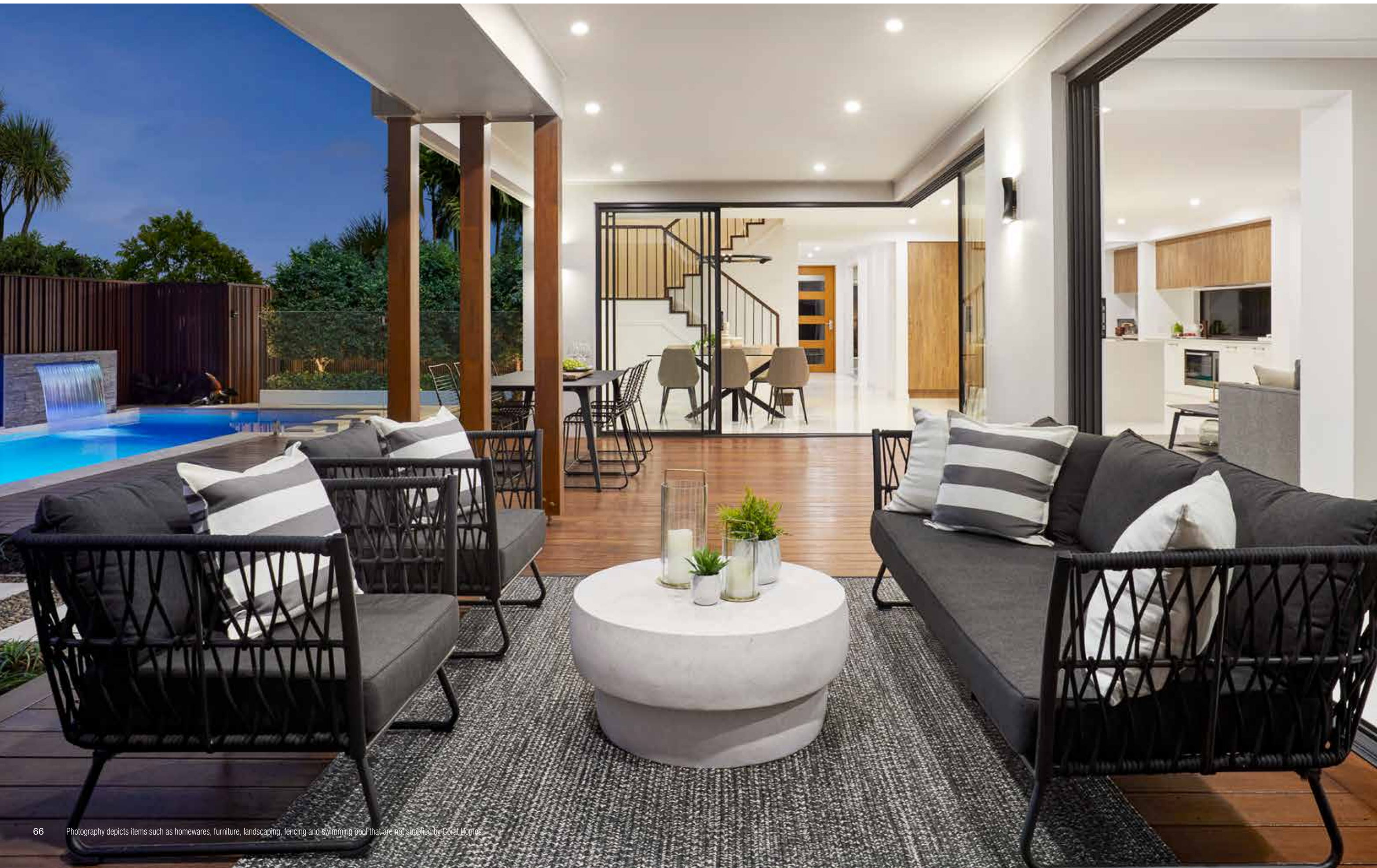
10m<sup>+</sup> Lot Width

Designer Facade



Hamptons Facade





## Rochester Series

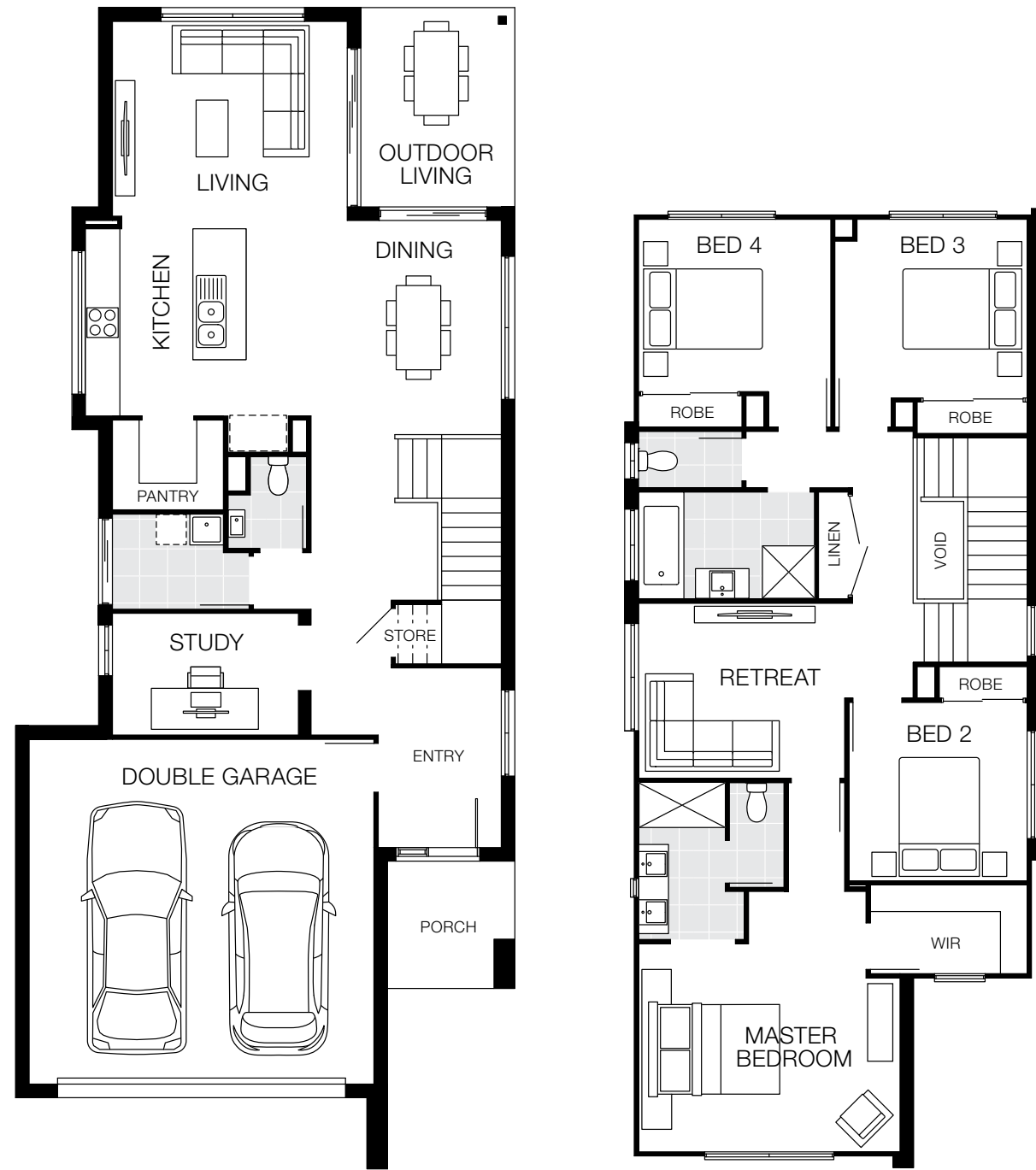
With four bedrooms, large open-plan living spaces and more storage than you ever thought possible, the Rochester series takes easy living to the next level. Upstairs you'll find a master suite designed for privacy, along with a rumpus room and three other bedrooms.

Available in versatile configurations, each Rochester design features a large, centrally located kitchen with an island bench and breakfast bar. This home can fit to a narrow lot and offers simple solutions to practical family living.

# Rochester 25

4 Bed 2 Living 2.5 Bath 2 Car

10m+ Lot Width



Bedrooms		Living Areas		Outdoor		Dimensions	
Master	3500 x 4400	Dining	3605 x 4209	Outdoor Living	3350 x 2590	Length	19.54m
Bed 2	3000 x 3000	Living	3280 x 3950			Width	8.40m
Bed 3	3005 x 3235	Retreat	2950 x 3470			Lower Area	134.42m <sup>2</sup>
Bed 4	2900 x 3235					Upper Area	102.47m <sup>2</sup>
						Total Area	236.89m <sup>2</sup> (25.50sq)

# Rochester 27

4 Bed 3 Living 2.5 Bath 2 Car

10m+ Lot Width



Bedrooms		Living Areas		Outdoor		Dimensions	
Master	3600 x 4400	Living	3580 x 4400	Outdoor Living	3650 x 2590	Length	20.76m
Bed 2	3000 x 3000	Dining	3600 x 4290			Width	8.40m
Bed 3	3000 x 3235	Media	3350 x 3350			Lower Area	145.64m <sup>2</sup>
Bed 4	3000 x 3235	Retreat	3100 x 3470			Upper Area	109.76m <sup>2</sup>
						Total Area	255.40m <sup>2</sup> (27.49sq)

Floorplan based on Designer Facade. Floorplan is indicative only, conceptual in nature and subject to change. Floorplan may depict features and/or other products which are not included in the house design, not included in the house price and/or not available from Coral Homes. All measurements are in millimetres unless otherwise stated. Floorplan measurements are approximate and are not to scale. Lot width is based on Designer facade and is to be used as a guide only and may change due to developer covenants and Local Authority guidelines. ©Coral Homes Pty Ltd. The copyright in this floorplan is owned by or licensed to Coral Homes Pty Ltd and may not be reproduced, copied or dealt with in any manner which infringes the exclusive rights of Coral Homes Pty Ltd as prescribed by the Copyright Act 1968, without the express written authorisation of Coral Homes Pty Ltd.

Floorplan based on Designer Facade. Floorplan is indicative only, conceptual in nature and subject to change. Floorplan may depict features and/or other products which are not included in the house design, not included in the house price and/or not available from Coral Homes. All measurements are in millimetres unless otherwise stated. Floorplan measurements are approximate and are not to scale. Lot width is based on Designer facade and is to be used as a guide only and may change due to developer covenants and Local Authority guidelines. ©Coral Homes Pty Ltd. The copyright in this floorplan is owned by or licensed to Coral Homes Pty Ltd and may not be reproduced, copied or dealt with in any manner which infringes the exclusive rights of Coral Homes Pty Ltd as prescribed by the Copyright Act 1968, without the express written authorisation of Coral Homes Pty Ltd.

# Rochester 29

4 Bed 3 Living 2.5 Bath 2 Car

10m+ Lot Width



Bedrooms		Living Areas		Outdoor		Dimensions	
Master	3800 x 4300	Living	3580 x 4400	Outdoor Living	3650 x 2590	Length	22.11m
Bed 2	3100 x 3000	Dining	3900 x 4290			Width	8.40m
Bed 3	3300 x 3235	Media	3650 x 3350			Lower Area	154.89m <sup>2</sup>
Bed 4	3000 x 3235	Retreat	3100 x 3470			Upper Area	118.36m <sup>2</sup>
						Total Area	273.25m <sup>2</sup> (29.41sq)

# Rochester 31

4 Bed 3 Living 2.5 Bath 2 Car

10m+ Lot Width



Bedrooms		Living Areas		Outdoor		Dimensions	
Master	4420 x 4300	Living	3930 x 4400	Outdoor Living	4000 x 2590	Length	23.11m
Bed 2	3200 x 3000	Dining	4360 x 4290			Width	8.40m
Bed 3	3700 x 3235	Media	3800 x 3350			Lower Area	164.26m <sup>2</sup>
Bed 4	3100 x 3235	Retreat	3370 x 3470			Upper Area	123.98m <sup>2</sup>
						Total Area	288.24m <sup>2</sup> (31.03sq)

Floorplan based on Designer Facade. Floorplan is indicative only, conceptual in nature and subject to change. Floorplan may depict features and/or other products which are not included in the house design, not included in the house price and/or not available from Coral Homes. All measurements are in millimetres unless otherwise stated. Floorplan measurements are approximate and are not to scale. Lot width is based on Designer facade and is to be used as a guide only and may change due to developer covenants and Local Authority guidelines. ©Coral Homes Pty Ltd. The copyright in this floorplan is owned by or licensed to Coral Homes Pty Ltd and may not be reproduced, copied or dealt with in any manner which infringes the exclusive rights of Coral Homes Pty Ltd as prescribed by the Copyright Act 1968, without the express written authorisation of Coral Homes Pty Ltd.

Floorplan based on Designer Facade. Floorplan is indicative only, conceptual in nature and subject to change. Floorplan may depict features and/or other products which are not included in the house design, not included in the house price and/or not available from Coral Homes. All measurements are in millimetres unless otherwise stated. Floorplan measurements are approximate and are not to scale. Lot width is based on Designer facade and is to be used as a guide only and may change due to developer covenants and Local Authority guidelines. ©Coral Homes Pty Ltd. The copyright in this floorplan is owned by or licensed to Coral Homes Pty Ltd and may not be reproduced, copied or dealt with in any manner which infringes the exclusive rights of Coral Homes Pty Ltd as prescribed by the Copyright Act 1968, without the express written authorisation of Coral Homes Pty Ltd.

# Rochester 33

4 Bed 3 Living 2.5 Bath 2 Car

10m+ Lot Width



### Bedrooms

Master	4200 x 4300
Bed 2	3250 x 3000
Bed 3	3670 x 3270
Bed 4	3370 x 3200

### Living Areas

Dining	4270 x 4290
Living	4500 x 4400
Media	3800 x 3350
Retreat	3800 x 3470

### Outdoor

Outdoor Living	4570 x 2590
----------------	-------------

### Dimensions

Length	24.51m
Width	8.40m
Lower Area	175.25m <sup>2</sup>
Upper Area	130.39m <sup>2</sup>
Total Area	305.64m <sup>2</sup> (32.90sq)

# Rochester Design Option

See website for more design options

## Master to Rear



Floorplan based on Designer Facade. Floorplan is indicative only, conceptual in nature and subject to change. Floorplan may depict features and/or other products which are not included in the house design, not included in the house price and/or not available from Coral Homes. All measurements are in millimetres unless otherwise stated. Floorplan measurements are approximate and are not to scale. Lot width is based on Designer facade and is to be used as a guide only and may change due to developer covenants and Local Authority guidelines. ©Coral Homes Pty Ltd. The copyright in this floorplan is owned by or licensed to Coral Homes Pty Ltd and may not be reproduced, copied or dealt with in any manner which infringes the exclusive rights of Coral Homes Pty Ltd as prescribed by the Copyright Act 1968, without the express written authorisation of Coral Homes Pty Ltd.

Design Option based on Rochester 33. This option is only available on certain home designs. Floorplan is indicative only, conceptual in nature and subject to change. Floorplan may depict features and/or other products which are not included in the house design, not included in the house price and/or not available from Coral Homes. ©Coral Homes Pty Ltd. The copyright in this floorplan is owned by or licensed to Coral Homes Pty Ltd and may not be reproduced, copied or dealt with in any manner which infringes the exclusive rights of Coral Homes Pty Ltd as prescribed by the Copyright Act 1968, without the express written authorisation of Coral Homes Pty Ltd.

# Rochester Facade Options

10m<sup>+</sup> Lot Width





## Seattle Series

On entering these homes, you'll be greeted with a large open living area adjoining an office. As you continue towards the back of the home you'll discover an open-plan kitchen, dining and family space, which spills out onto an inviting outdoor living area.

Upstairs you'll find enough bedrooms to accommodate a growing family, along with a separate activity room for the kids to call their own.



# Seattle 34 MKII

4 Bed 3 Living 3 Bath 2 Car

12.5m+ Lot Width



Bedrooms		Living Areas		Outdoor		Dimensions	
Master	4200 x 4170	Family	5000 x 4400	Outdoor Living	3530 x 4250	Length	20.28m
Bed 2	3000 x 3100	Living	3750 x 4900			Width	11.30m
Bed 3	3000 x 3300	Activity	3100 x 4500			Lower Area	196.77m <sup>2</sup>
Bed 4	3000 x 3300					Upper Area	122.90m <sup>2</sup>
						Total Area	319.67m <sup>2</sup> (34.40sq)

# Seattle 36 MKII

4 Bed 3 Living 3 Bath 2 Car

12.5m+ Lot Width



Bedrooms		Living Areas		Outdoor		Dimensions	
Master	4220 x 4170	Family	5000 x 4500	Outdoor Living	3830 x 4250	Length	20.56m
Bed 2	3000 x 3500	Living	3620 x 4900			Width	11.30m
Bed 3	3150 x 3500	Activity	3250 x 4300			Lower Area	204.45m <sup>2</sup>
Bed 4	3150 x 3500					Upper Area	129.36m <sup>2</sup>
						Total Area	333.81m <sup>2</sup> (35.90sq)

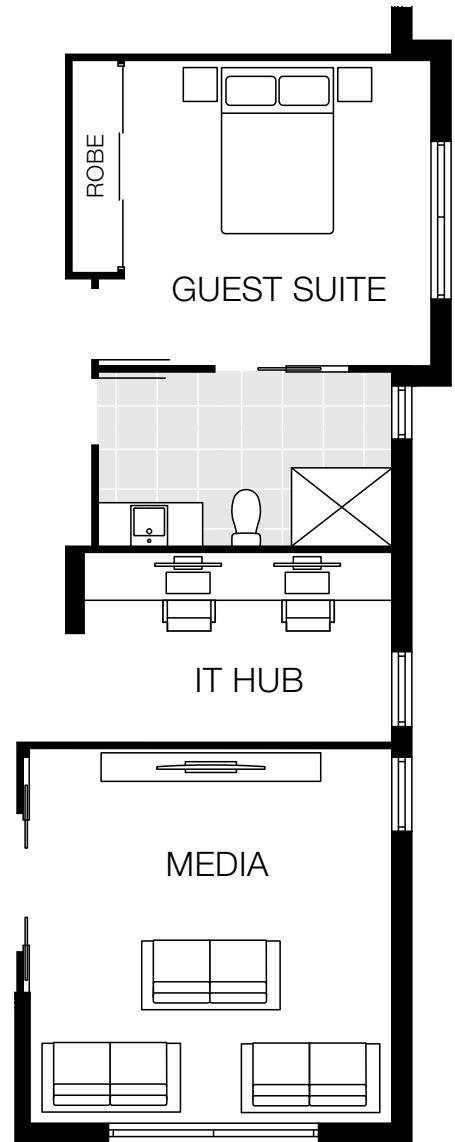
Floorplan based on Designer Facade. Floorplan is indicative only, conceptual in nature and subject to change. Floorplan may depict features and/or other products which are not included in the house design, not included in the house price and/or not available from Coral Homes. All measurements are in millimetres unless otherwise stated. Floorplan measurements are approximate and are not to scale. Lot width is based on Designer facade and is to be used as a guide only and may change due to developer covenants and Local Authority guidelines. ©Coral Homes Pty Ltd. The copyright in this floorplan is owned by or licensed to Coral Homes Pty Ltd and may not be reproduced, copied or dealt with in any manner which infringes the exclusive rights of Coral Homes Pty Ltd as prescribed by the Copyright Act 1968, without the express written authorisation of Coral Homes Pty Ltd.

Floorplan based on Designer Facade. Floorplan is indicative only, conceptual in nature and subject to change. Floorplan may depict features and/or other products which are not included in the house design, not included in the house price and/or not available from Coral Homes. All measurements are in millimetres unless otherwise stated. Floorplan measurements are approximate and are not to scale. Lot width is based on Designer facade and is to be used as a guide only and may change due to developer covenants and Local Authority guidelines. ©Coral Homes Pty Ltd. The copyright in this floorplan is owned by or licensed to Coral Homes Pty Ltd and may not be reproduced, copied or dealt with in any manner which infringes the exclusive rights of Coral Homes Pty Ltd as prescribed by the Copyright Act 1968, without the express written authorisation of Coral Homes Pty Ltd.

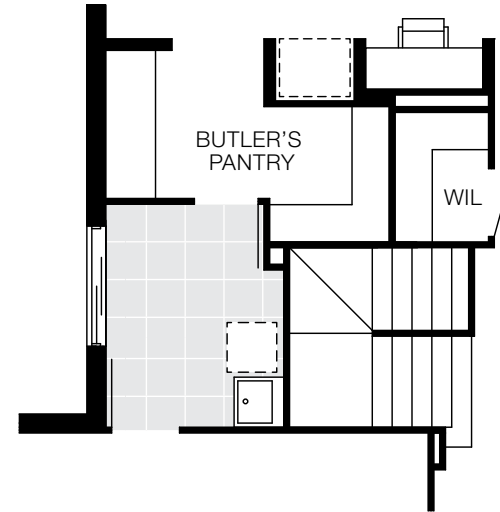
# Seattle Design Options

See website for more design options

Guest Bedroom with Ensuite



Walk-through Laundry and Butler's Pantry



# Seattle Facade Options

14m+ Lot Width

Designer Facade



Hamptons Facade



Piermont Facade



Vista Facade



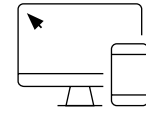
Design Options based on Seattle 36 MKII. These options are only available on certain home designs. Floorplans are indicative only, conceptual in nature and subject to change. Floorplans may depict features and/or other products which are not included in the house design, not included in the house price and/or not available from Coral Homes. ©Coral Homes Pty Ltd. The copyright in these floorplans are owned by or licensed to Coral Homes Pty Ltd and may not be reproduced, copied or dealt with in any manner which infringes the exclusive rights of Coral Homes Pty Ltd as prescribed by the Copyright Act 1968, without the express written authorisation of Coral Homes Pty Ltd.

Facades based on Seattle 38 (Hamptons facade based on Seattle 36 MKII). Facades depict items such as homewares, furniture, landscaping and fencing that are not supplied by Coral Homes. Facades are indicative only, conceptual in nature and subject to change. Facades depict non-standard fixtures, features and finishes. Additional costs for timber decking, driveway, lighting, more than one colour and deep base paints, tiles, non-standard brick and off white mortar apply.



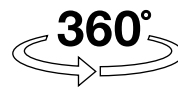
## Find out more

There's plenty of ways for you to learn more about us.



### Website

Want to see more of our home designs?  
Head over to our website at [coralhomes.com.au](https://coralhomes.com.au)



### Virtual Tours

Not enough time to visit our displays?  
Take a virtual tour at [coralhomes.com.au/virtual-tours](https://coralhomes.com.au/virtual-tours)



### Social

Connect with us! We update our social network with the latest Coral Homes news and offers.



Photography depicts items such as homewares, furniture and wallpaper that are not supplied by Coral Homes.

# CORAL HOMES

[coralhomes.com.au](http://coralhomes.com.au)

© Coral Homes Pty Ltd. The copyright in the floorplans and facades depicted in this brochure are owned by or licensed to Coral Homes Pty Ltd and may not be reproduced, copied or dealt with in any manner which infringes the exclusive rights of Coral Homes Pty Ltd as prescribed by the Copyright Act 1968 without the express written authorisation of Coral Homes Pty Ltd. QBCC 50792/1014053 & NSW OFT 62084C. 200601