



The Hamptons
Collection

CORAL
HOMES

Traditional homes built for the *Australian lifestyle*

What's special about Coral Homes' Hamptons Collection is affordability. Thanks to our commitment to working closely with leading suppliers, Hamptons homes are no longer just for the affluent.

Our light and bright Hamptons homes pay homage to traditional Hamptons architecture, however are adapted to suit contemporary Australian living.

Classic design features include cladding, gable roof lines, timber floors, neutral colours, as well as oversized windows to welcome natural light throughout the home.

Discover classic design inspiration in Coral's range of Hamptons and Farmhouse-style homes.



Contents.



01. Hamptons

Hamptons Exteriors	6
Hamptons Interiors	8
Hamptons Kitchens	10
Hamptons Living	12
Hamptons Bathrooms	14
Hamptons Bedrooms	16
Hamptons Staircases	18

02. Farmhouse

Farmhouse Interiors	22
Farmhouse Kitchens	24
Farmhouse Living	26
Farmhouse Bathrooms	28
Farmhouse Bedrooms	30



01.

Hamptons

From shaker style cabinetry to exterior cladding, you'll love our range of single and double-storey home designs available with Hamptons Facade. Make it your own with our extensive range of Hamptons materials, fixtures and fittings to choose from.

Monash 33 MKII – Paradise Lakes Estate, Willawong



Hamptons *Exteriors*

For an on-trend Hamptons look, grey weatherboards are accented with white trim on the window frames and door frames. Or, you can take the Hamptons theme back to its roots with a single colour palette across all your exteriors, such as white weatherboards, window trims and door trims.

A gable roof delivers the quintessential Hamptons look. The design involves two pitched roof panels meeting in the centre of the home, in the shape of an inverted 'V'. Providing both protection and style, eave returns are used as a transition between the walls and the roof of a Hamptons home.



Majorca 33 S – Hereford Hill Estate, Lochinvar

Linea™ Cladding by James Hardie

is our weatherboard material of choice for a Hamptons home. Linea™ Cladding has distinctive shadow lines and is embedded with textures such as render and wood grain. Plus, it's resistant to shrinking and swelling, damage from termites, moisture rotting and fire, making sure your home's exterior stands the test of time. Linea™ Cladding by James Hardie has the Hamptons timber look, with the strong performance of fibre cement.



Hamptons *Interiors*

The traditional colour palette is always neutral, with whites, creams and accents of linen tones, greys and blues. Combining blue and white together gives a timeless coastal feel, and a Hamptons home is typically a rich navy with a warm cream, along with some duck egg blue tones.



Stylist's Tip:

Use neutral textured rugs to create warmth and add a sense of depth to the room.



Stylist's Tip:

Hang oversized pendants above the kitchen island to draw the eye and add a statement piece to the kitchen.

Hamptons *Kitchens*

With their characteristic open-plan living areas, Hamptons homes bring people together. Imagine the bustle, conversation and laughter of family and friends gathered around the kitchen island as food is prepared, before heading to the outdoor verandah or patio for lunch.

Feature kitchens are hallmarks of the Hamptons style, with shaker-style cabinetry providing depth to the look of your Hamptons interior. This style of door originated in England during the 18th century shaker movement in furniture design. The design ethos was simple: keep things durable, functional and minimal in style.

Combine your shaker style cabinetry with thick Caesarstone® benchtops for an opulent feel. Oversized glass pendant lighting adds the finishing touch to a Hamptons kitchen.





Hamptons *Living*

A neutral palette with quality soft furnishings create a beautiful Hamptons feeling.

Lighting adds to the opulent feel of a Hamptons abode and brings the styling of the space together. Think glamorous glass pendants, chandeliers and statement side table lamps.





Stylist's Tip:

Invest in luxury bath towels, soaps, flowers and a plush bath robe to take your bathroom to the next level.

Hamptons Bathrooms

A Hamptons bathroom often incorporates above-counter basins and brass and chrome tapware, while traditional white subway tiles from floor to ceiling create a sleek backdrop.

The bathroom vanity typically reflects the colours, materials and finishes chosen for the kitchen cabinetry, with shaker-style doors and a luxe Caesarstone® benchtop.

Classic white plantation shutters add to the bathroom's charm, while filtering light and adding privacy to your bathroom retreat. Personality is added through geometric patterns in floor tiles or herringbone to walls.



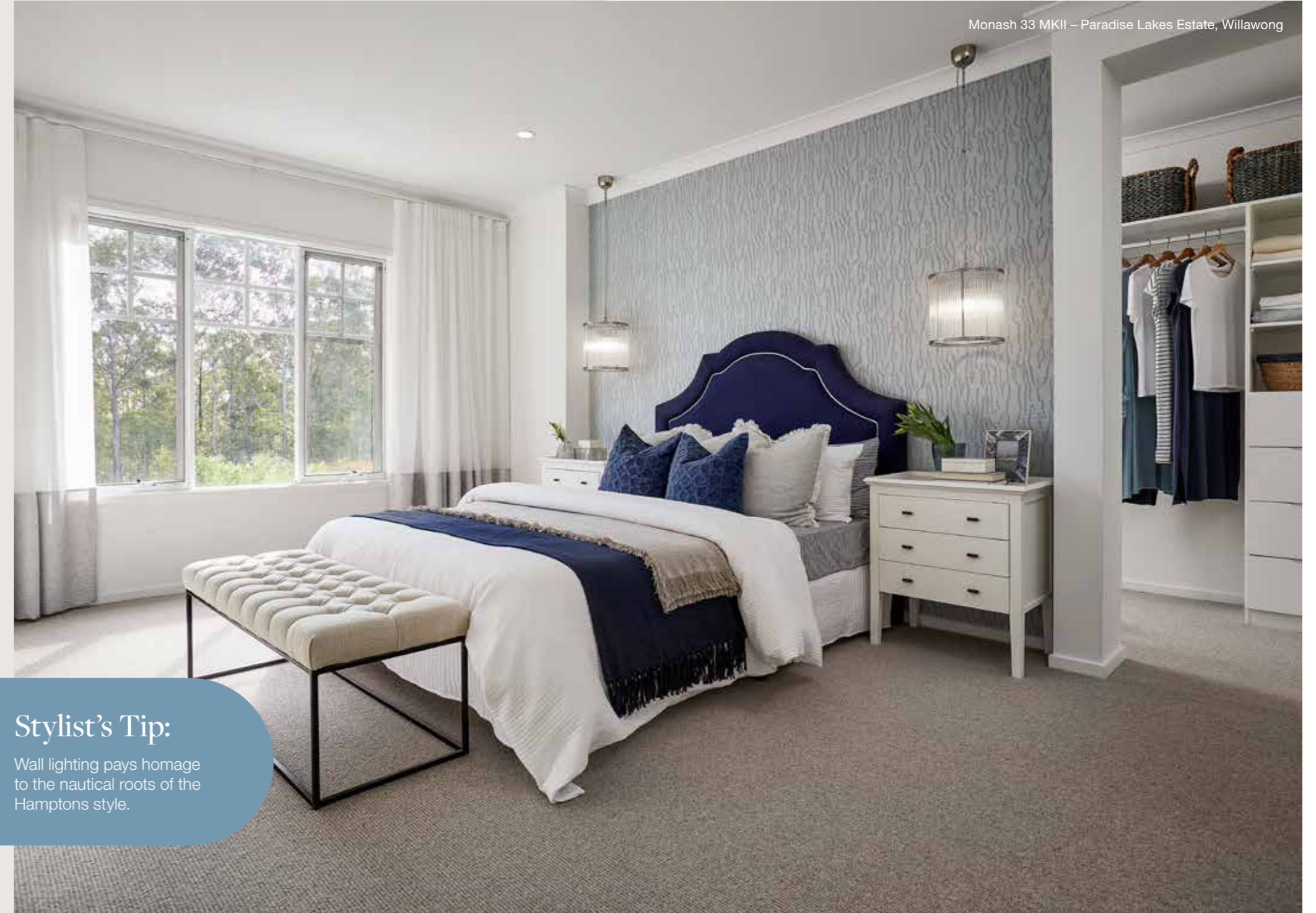


Hamptons *Bedrooms*

Simple touches in your finishes, soft furnishings and fittings can turn your bedroom into a Hamptons-style sanctuary. Textural wallpapers in neutral tones, grass weaves or duck egg blue bring a serene feeling to the bedroom retreat.

Traditional Hamptons details are featured in the bed head, such as buttoning nickel studs or contrast piping. This is paired with oversized bedside tables to add an opulent feel. Complete the room with a pair of elegant bedside pendants or wall lights in glass or nickel for a classic look.

When it comes to furnishing, stick to a neutral palette with pops of blue to add a laid-back coastal vibe. A selection of natural materials like linen and wood will help bring the outdoors in.



Monash 33 MKII – Paradise Lakes Estate, Willawong

Stylist's Tip:

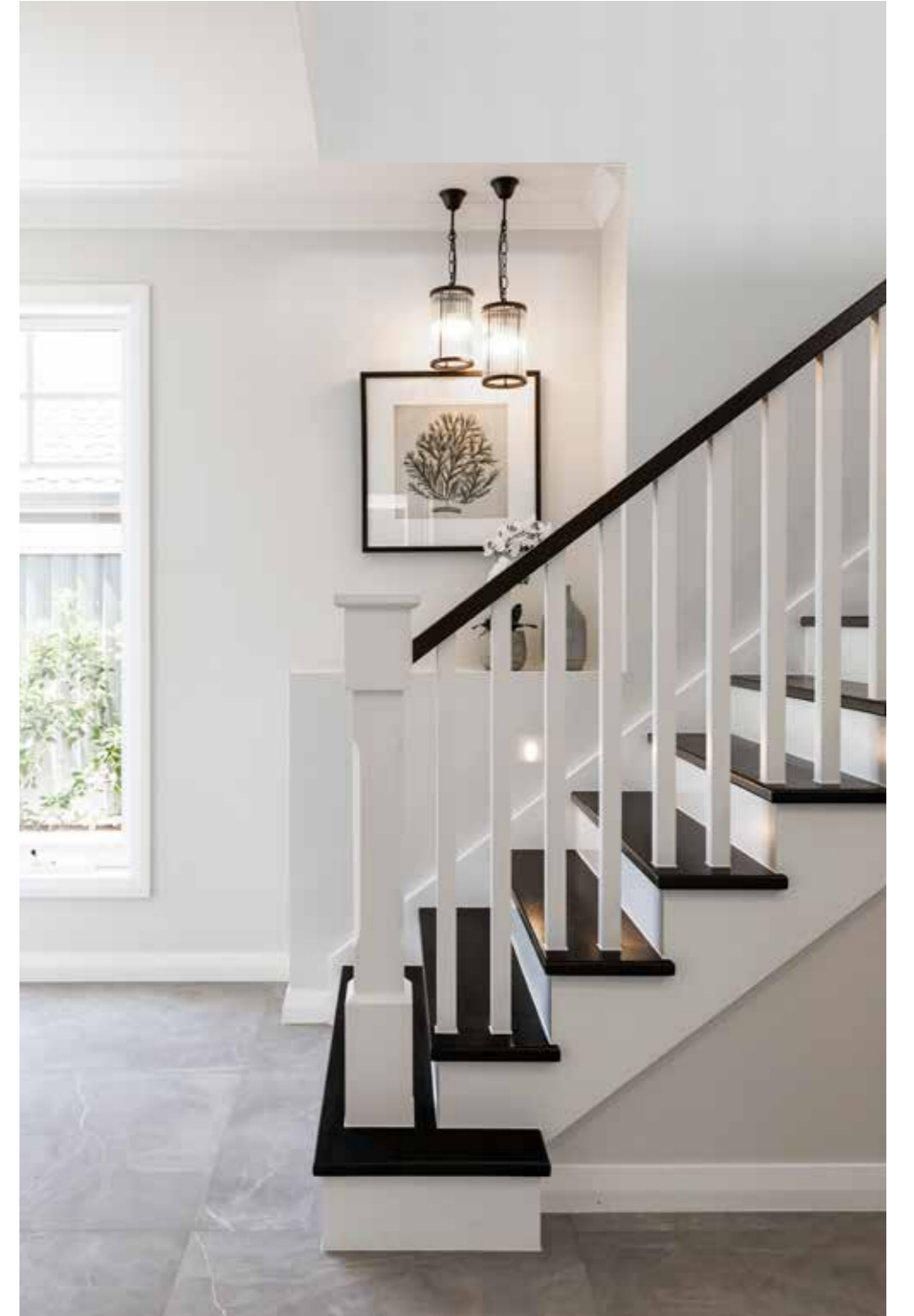
Wall lighting pays homage to the nautical roots of the Hamptons style.



Monash 33 MKII – Paradise Lakes Estate, Willawong

Hamptons *Staircases*

The traditional detailing of a grand timber staircase draws together the classic Hamptons look. White and monochrome colours bring an element of sophistication.





02.

Farmhouse

Drawing inspiration from elements of nature and traditional Hamptons architecture, the Farmhouse theme is perfect for laid-back family living. Create your own farmhouse-style home with our extensive range of fixtures, fittings and colour selections.

Farmhouse *Interiors*

The farmhouse colour palette is neutral, with subtle pops of colour, such as soothing green tones. A farmhouse home has an organic feel, with the warm features of a traditional design.



Milan 29 – Aura Estate, Bells Creek



Lisbon 30 – Shoreline Estate, Redland Bay

Stylist's Tip:

Lighting can not only be functional, but also beautiful, adding interest and warmth.



Stylist's Tip:

Visually balance the room by introducing contrast with subtle accents of black and dark tones.

Farmhouse *Kitchens*

A farmhouse family kitchen is the hub of the home - warm, inviting and practical. Classic shaker-style cabinetry is showcased in relaxing eucalyptus tones, bringing the outside in. While statement tapware in brass or black adds luxury to the space. To add personality, a patterned tile is used for the kitchen's splashback.





Lisbon 28 SZ – HomeWorld Leppington

Farmhouse *Living*

In a farmhouse living space, natural materials such as linen furniture is paired with textured rugs and wooden flooring. Organic soft furnishings, florals and greenery ground the space.



Lisbon 30 – Shoreline Estate, Redland Bay

Lisbon 30 – Shoreline Estate, Redland Bay



Stylist's Tip:

Add brass or black tapware and fittings for a touch of elegance.

Farmhouse Bathrooms

A farmhouse bathroom is a calming sanctuary to retreat. Earthy green tones feature on bathroom cabinetry, with shaker detailing to match the kitchen. A small format square wall tile adds country character, while a patterned floor tile inspires a sense of creativity and fun.

Milan 29 – Aura Estate, Bells Creek



Lisbon 30 – Shoreline Estate, Redland Bay



Farmhouse *Bedrooms*

A cosy farmhouse bedroom welcomes the serenity of the outdoors. It typically features a woven wallpaper, completed with brass hanging pendant lighting. Wooden bedside tables with foraged greenery add character, while the bed is complete with warm neutrals and olive tones.

Stylist's Tip:

Layering textures create visual depth and allow the design to be timeless.

Milan 29 – Aura Estate, Bells Creek



Build your very own *Hamptons haven*

Be inspired by our extensive collection
of home designs today.



Why Coral Homes?

Our foundation was built on transparency, trust and exceptional customer service. Having built over 25,000 homes across three decades, our customers receive a fixed price guarantee, independent quality checks and so much more.



30+ Years Experience

Over 25,000 families have trusted us to build their family home. Providing a high level of quality, value for money, security and transparency, is why we are one of Australia's largest home builders today.



Fixed Price Guarantee

We understand the financial commitments around building a home and provide you with peace of mind by offering contracts with a Fixed Price Guarantee' upfront.



Independent Quality Inspections

We have a stringent seven step Quality Assurance process to ensure we build each and every home to a high quality. This process includes an independent quality inspection.



HIA Professional Major Builder

We're a proud two-time winner of the HIA Professional Major Builder Award, the industry's most prestigious award. We equally value what our customers have to say so we are honoured to be named Product Reviews 2021 & 2022 winners for customer satisfaction.

CORAL HOMES

The fixed price guarantee is in respect to the cost of construction of your house and associated site works in accordance with the specifications of your contract. Coral Homes reserves the right to vary, terminate or suspend the operation of the Fixed Price Guarantee offer in its absolute discretion, without notice.