

# CORAL HOMES



Double Storey

Queensland



## Important Information about this guide:

### Changes to the National Construction Code

The National Construction Code of Australia (NCC) is a performance-based code that sets the minimum requirements in relation to structure, fire safety, accessibility, health and amenity, and sustainability.

**\*NCC Qualification:** Changes to the National Construction Code (NCC 2022) requirements relating to 'Accessible Housing' are effective from 1 October 2023. The NCC 2022 requirements (including but not limited to) the new 'Accessible Housing' requirements have been applied to this guide. NCC requirements relating to 'Energy Efficiency' have not been applied to this brochure and additional costs may apply for items including (but not limited to) window and door glazing upgrades (Base prices include clear float to habitable rooms and obscure glass to wet areas). Coral Homes recommend using light colours to roof/wall/window/doors with solar absorptance ratings of 0.40 or less.

The NCC 2022 is subject to **ongoing** review and may be updated or changed in the future. Accordingly, the inclusions, floorplans, and homes on display (and featured within this guide) are subject to change without notice in order to comply with the requirements of the NCC 2022 including but not limited to 'Energy Efficiency' & 'Accessible Housing' (as amended from time to time).

Coral Homes reserves the right to vary, terminate, alter, or withdraw the plans and inclusions at their absolute discretion and without notice. Coral Homes will not be responsible for any additional costs associated with changes to the

floorplans or inclusions to ensure they comply with the NCC 2022 (as amended from time to time). Such costs may be passed on to, and will be required to be paid by the customer.



For further details please speak with a Coral Homes New Home Consultant or for full terms and conditions visit [coralhomes.com.au/terms-conditions/](https://coralhomes.com.au/terms-conditions/) or scan the QR code.

### Rest easy knowing your new home will be built with the most up-to-date industry standards.

Photography throughout this guide depicts items such as homewares, furniture, landscaping, fencing and may depict items that are upgraded or not supplied by Coral Homes. Floorplans throughout this guide are indicative only, conceptual in nature and subject to change. Floorplans may depict features and/or other products which are not included in the house design, not included in the house price and/or not available from Coral Homes.

© Coral Homes Pty Ltd. The copyright in the floorplans and facades depicted in this brochure are owned by or licensed to Coral Homes Pty Ltd and may not be reproduced, copied or dealt with in any manner which infringes the exclusive rights of Coral Homes Pty Ltd as prescribed by the Copyright Act 1968 without the express written authorisation of Coral Homes Pty Ltd. QBCC 50792/1014053 & NSW OFT 62084C. OCT-23



# Double Storey Collection – QLD

Browse through our collection of most-loved double storey homes to find your dream design. Each spacious floorplan is available in multiple facades to suit your style. To discover our full range of homes, visit [coralhomes.com.au](http://coralhomes.com.au)

*Discover our designs*



Lot Width	Home Design					Page
13.5m+	Atlanta 391Q	5	4	3.5	2	6
13.5 m+	Atlanta 400Q	5	4	3.5	2	9
13.5 m+	Atlanta 419Q	5	4	3.5	2	10
14m+	Atlanta 443Q	5	4	3.5	2	13
14.5 m+	Atlanta 474Q	5	4	5.5	2	14
<hr/>						
10m+	Baltimore 224Q	4	2	3	2	22
10m+	Baltimore 239Q	4	2	3	2	23
10m+	Baltimore 274Q	4	3	3	2	25
10m+	Baltimore 296Q	4	3	3	2	26
12m+	Baltimore 302Q	4	3	3	2	30
12m+	Baltimore 331Q	5	3	3	2	33
12m+	Baltimore 356Q	5	3	3	2	34
12m+	Baltimore 382Q	5	3	3	2	35
<hr/>						
12.5m+	Bentley 300Q	4	3	3.5	2	43
13m+	Bentley 329Q	4	3	3.5	2	44
13.5m+	Bentley 356Q	4	3	3.5	2	47
13.5m+	Bentley 383Q	4	3	3.5	2	48
13.5m+	Bentley 406Q	5	3	3.5	2	49
<hr/>						
12m+	Boston 308Q	6	3	3.5	2	56
12.5m+	Boston 327Q	5	3	3.5	2	57
13m+	Boston 354Q	5	3	3.5	2	61
13.5m+	Boston 374Q	5	3	4	2	62
<hr/>						
Lot Width	Home Design					Page
12m+	Monash 236Q	4	2	3	2	70
12m+	Monash 259Q	4	3	3	2	71
12m+	Monash 273Q	4	3	3	2	72
13m+	Monash 280Q	4	3	3	2	73
13.5m+	Monash 294Q	4	3	3	2	77
12.5m+	Monash 299Q	5	3	3	2	78
12.5m+	Monash 279Q	4	3	3	2	79
13m+	Monash 315Q	5	4	3	2	80
13m+	Monash 311Q	5	3	3	2	81
13.5m+	Monash 321Q	5	3	3.5	2	82
13.5m+	Monash 334Q	5	3	3.5	2	83
<hr/>						
10m+	Rochester 265Q	5	2	3	2	88
10m+	Rochester 276Q	4	3	3	2	89
10m+	Rochester 288Q	5	2	3	2	90
10m+	Rochester 304Q	4	3	3	2	91
<hr/>						
10m+	Sacramento 263Q	5	2	3	2	98
10m+	Sacramento 278Q	4	3	3	2	99
10m+	Sacramento 301Q	4	3	3.5	2	101
10m+	Sacramento 318Q	4	3	3.5	2	102
10m+	Sacramento 326Q	4	3	3.5	2	103

# Atlanta Series

Looking for the contemporary home of your dreams? Cue the Atlanta Series. With a light and airy open-plan layout, the Atlanta design is the essence of a spacious family home, made to suit blocks of 13.5m+. Featuring five bedrooms and four living spaces, the Atlanta effortlessly flows from inside to outside, for easy family living.



Scan to view series

Atlanta 48 (Modern Facade) – Paradise Lakes Estate, Willawong

On display



Atlanta 48 – Paradise Lakes Estate, Willawong



Atlanta 48 – Paradise Lakes Estate, Willawong



# Atlanta 391Q

5 | 4 | 3.5 | 2



Master Bed	5040 x 4360	Activity	4000 x 4000	Outdoor	3000 x 5550	Lower Area	226.24m <sup>2</sup>
Bed 2	3550 x 3830	Dining	3020 x 5800	House Length	22.07m	Upper Area	167.46m <sup>2</sup>
Bed 3	3410 x 3300	Family	4250 x 5630	House Width	12.15m	House Area	391.97m <sup>2</sup> (42.19sq)
Bed 4	3300 x 3140	Living	5000 x 4110			<b>Lot width</b>	<b>13.5m<sup>+</sup></b>
Guest	3500 x 3140	Media	4600 x 4000				

Floorplan and lot width based on Designer facade. Floorplan is NCC 2022<sup>®</sup> compliant<sup>†</sup>, indicative only, conceptual in nature and subject to change without notice. Floorplan may depict features and/or other products which are not included in the house design, not included in the house price and/or not available from Coral Homes. All measurements are in millimeters unless otherwise stated. Floorplan measurements are approximate and are not to scale. Lot width is a guide only and may change due to developer covenants and Local Authority guidelines. For more information about terms & conditions, see the "Important Information" on (page 1). <sup>†</sup>See NCC Qualification in "Important Information" (page 1).

Atlanta 48 – Paradise Lakes Estate, Willawong



Atlanta 48 – Paradise Lakes Estate, Willawong

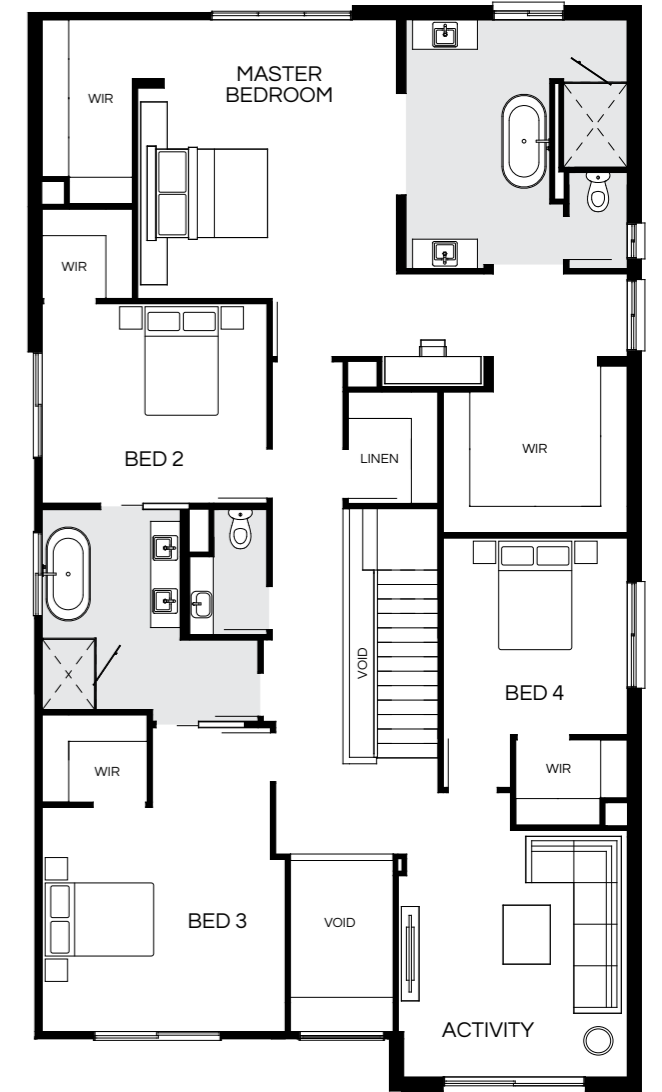


Photography depicts items such as homewares, furniture, finishes, landscaping, fencing and may depict items that are upgraded or not supplied by Coral Homes. Speak with your New Home Consultant for more details.



# Atlanta 400Q

5 | 4 | 3.5 | 2



Master Bed	4745 x 4410	Activity	4200 x 3900	Outdoor	3000 x 5500	Lower Area	216.82m <sup>2</sup>
Bed 2	3400 x 3830	Dining	3000 x 5750	House Length	21.525m	Upper Area	183.69m <sup>2</sup>
Bed 3	3820 x 4140	Family	3865 x 5510	House Width	11.96m	House Area	400.51m <sup>2</sup> (43.11sq)
Bed 4	3350 x 3140	Living	4700 x 4040			<b>Lot width</b>	<b>13.5m+</b>
Guest	3600 x 3140	Media	4500 x 3810				

Floorplan and lot width based on Designer facade. Floorplan is NCC 2022\* compliant\*, indicative only, conceptual in nature and subject to change without notice. Floorplan may depict features and/or other products which are not included in the house design, not included in the house price and/or not available from Coral Homes. All measurements are in millimeters unless otherwise stated. Floorplan measurements are approximate and are not to scale. Lot width is a guide only and may change due to developer covenants and Local Authority guidelines. For more information about terms & conditions, see the "Important Information" on (page 1). \*See NCC Qualification in "Important Information" (page 1).

# Atlanta 419Q

5 | 4 | 3.5 | 2

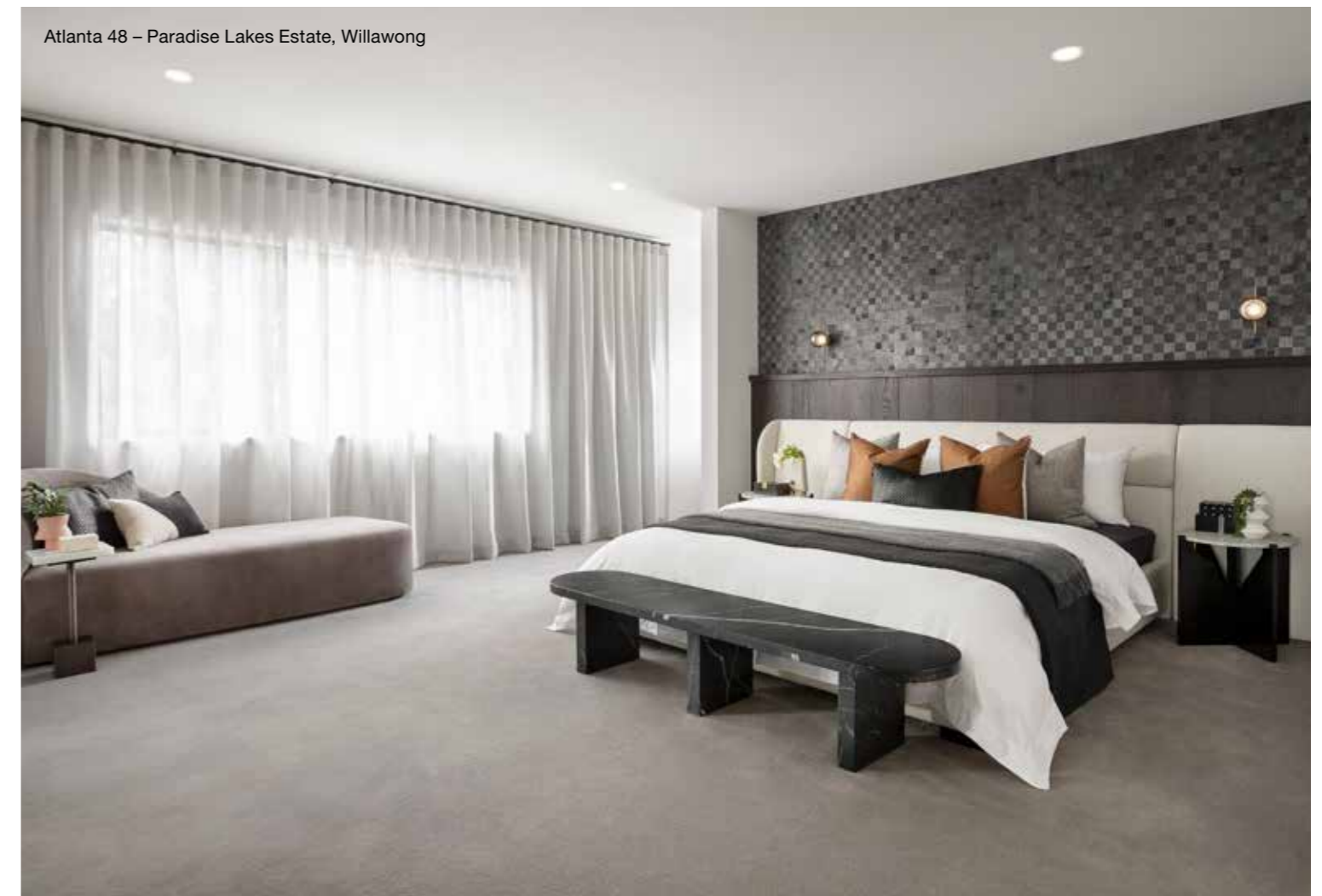


Master Bed	5040 x 4600	Activity	4200 x 4090	Outdoor	3000 x 5550	Lower Area	226.24m <sup>2</sup>
Bed 2	3650 x 3830	Dining	3020 x 5800	House Length	22.07m	Upper Area	192.95sm <sup>2</sup>
Bed 3	3930 x 4140	Family	4250 x 5630	House Width	12.15m	House Area	419.19m <sup>2</sup> (45.12sq)
Bed 4	3600 x 3140	Living	5000 x 4110			<b>Lot width</b>	<b>13.5m<sup>+</sup></b>
Guest	3500 x 3140	Media	4600 x 4000				

Floorplan and lot width based on Designer facade. Floorplan is NCC 2022<sup>®</sup> compliant<sup>†</sup>, indicative only, conceptual in nature and subject to change without notice. Floorplan may depict features and/or other products which are not included in the house design, not included in the house price and/or not available from Coral Homes. All measurements are in millimeters unless otherwise stated. Floorplan measurements are approximate and are not to scale. Lot width is a guide only and may change due to developer covenants and Local Authority guidelines. For more information about terms & conditions, see the "Important Information" on (page 1). <sup>†</sup>See NCC Qualification in "Important Information" (page 1).



Atlanta 48 – Paradise Lakes Estate, Willawong



Photography depicts items such as homewares, furniture, finishes, landscaping, fencing and may depict items that are upgraded or not supplied by Coral Homes. Speak with your New Home Consultant for more details.

# Atlanta 443Q

Most popular

5 | 4 | 3.5 | 2



Master Bed	5040 x 4800	Activity	4200 x 4200	Outdoor	3500 x 6200	Lower Area	242.41m <sup>2</sup>
Bed 2	3850 x 3830	Dining	3200 x 6145	House Length	22.77m	Upper Area	201.54m <sup>2</sup>
Bed 3	3930 x 4030	Family	4260 x 5805	House Width	12.85m	House Area	443.95m <sup>2</sup> (47.79sq)
Bed 4	3600 x 3170	Living	5000 x 4185			<b>Lot width</b>	<b>14m<sup>+</sup></b>
Guest	3630 x 3170	Media	4600 x 4200				

Floorplan and lot width based on Designer facade. Floorplan is NCC 2022\* compliant\*, indicative only, conceptual in nature and subject to change without notice. Floorplan may depict features and/or other products which are not included in the house design, not included in the house price and/or not available from Coral Homes. All measurements are in millimeters unless otherwise stated. Floorplan measurements are approximate and are not to scale. Lot width is a guide only and may change due to developer covenants and Local Authority guidelines. For more information about terms & conditions, see the "Important Information" on (page 1). \*See NCC Qualification in "Important Information" (page 1).



# Atlanta 474Q

5 | 4 | 5.5 | 2



Master Bed	5315 x 4800	Activity	4400 x 4340	Outdoor	3800 x 6400	Lower Area	259.27m <sup>2</sup>
Bed 2	3720 x 3960	Dining	3465 x 6095	House Length	24.105m	Upper Area	215.64m <sup>2</sup>
Bed 3	3830 x 4230	Family	4400 x 5745	House Width	12.94m	House Area	474.91m <sup>2</sup> (51.12sq)
Bed 4	3600 x 3470	Living	5000 x 4495			<b>Lot width</b>	<b>14.5m<sup>+</sup></b>
Guest	3630 x 3470	Media	4900 x 4250				

Floorplan and lot width based on Designer facade. Floorplan is NCC 2022<sup>®</sup> compliant<sup>†</sup>, indicative only, conceptual in nature and subject to change without notice. Floorplan may depict features and/or other products which are not included in the house design, not included in the house price and/or not available from Coral Homes. All measurements are in millimeters unless otherwise stated. Floorplan measurements are approximate and are not to scale. Lot width is a guide only and may change due to developer covenants and Local Authority guidelines. For more information about terms & conditions, see the "Important Information" on (page 1). <sup>†</sup>See NCC Qualification in "Important Information" (page 1).



Atlanta 48 – Paradise Lakes Estate, Willawong



Photography depicts items such as homewares, furniture, finishes, landscaping, fencing and may depict items that are upgraded or not supplied by Coral Homes. Speak with your New Home Consultant for more details.



# Atlanta Facades

14.5m+ Lot Width

Modern Display Facade



Vantage



Hamptons



Hamptons (Balcony)



Designer



Vista





# Baltimore Series

Designed to suit both traditional and narrow lots of 10m+, the sought-after Baltimore Series has multiple home designs to choose from. These innovative floorplans are designed for contemporary open-plan living, featuring an abundance of family-friendly communal areas.



Scan to view series

Baltimore 38 – Arise Estate, Rochedale



Baltimore 38 (Vantage Facade) – Arise Estate, Rochedale

On display



Baltimore 38 – Arise Estate, Rochedale



# Baltimore 224Q

4 | 2 | 3 | 2



Master Bed	3600 x 3570	Activity	3630 x 3780	House Length	17.21m	Lower Area	119.67m <sup>2</sup>
Bed 2	3100 x 3070	Dining	3200 x 3480	House Width	8.00m	Upper Area	105.31m <sup>2</sup>
Bed 3	3000 x 3000	Living	3600 x 4000	House Area	224.98m <sup>2</sup> (24.22sq)	Lot width	10m <sup>+</sup>
Bed 4	3000 x 2850	Outdoor	3720 x 2620				

Floorplan and lot width based on Designer facade. Floorplan is NCC 2022<sup>®</sup> compliant<sup>†</sup>, indicative only, conceptual in nature and subject to change without notice. Floorplan may depict features and/or other products which are not included in the house design, not included in the house price and/or not available from Coral Homes. All measurements are in millimeters unless otherwise stated. Floorplan measurements are approximate and are not to scale. Lot width is a guide only and may change due to developer covenants and Local Authority guidelines. For more information about terms & conditions, see the "Important Information" on (page 1). <sup>†</sup>See NCC Qualification in "Important Information" (page 1).

# Baltimore 239Q

4 | 2 | 3 | 2



Master Bed	3720 x 3700	Activity	3435 x 3470	House Length	19.605m	Lower Area	136.37m <sup>2</sup>
Bed 2	3085 x 3000	Dining	3100 x 3880	House Width	8.40m	Upper Area	103.19m <sup>2</sup>
Bed 3	3085 x 3000	Living	3860 x 3730	House Area	239.56m <sup>2</sup> (25.79sq)	Lot width	10m <sup>+</sup>
Bed 4	3000 x 3470	Outdoor	3140 x 2810				

Floorplan and lot width based on Designer facade. Floorplan is NCC 2022<sup>®</sup> compliant<sup>†</sup>, indicative only, conceptual in nature and subject to change without notice. Floorplan may depict features and/or other products which are not included in the house design, not included in the house price and/or not available from Coral Homes. All measurements are in millimeters unless otherwise stated. Floorplan measurements are approximate and are not to scale. Lot width is a guide only and may change due to developer covenants and Local Authority guidelines. For more information about terms & conditions, see the "Important Information" on (page 1). <sup>†</sup>See NCC Qualification in "Important Information" (page 1).

Baltimore 38 – Arise Estate, Rochedale



Baltimore 38 – Arise Estate, Rochedale



# Baltimore 274Q

4 | 3 | 3 | 2



Master Bed	3980 x 4400	Activity	3590 x 3520	Outdoor	2800 x 7000	Lower Area	167.96m <sup>2</sup>
Bed 2	3160 x 2950	Dining	4000 x 3000	House Length	23.29m	Upper Area	106.22m <sup>2</sup>
Bed 3	3380 x 3100	Living	4000 x 3540	House Width	8.85m	House Area	274.17m <sup>2</sup> (29.51sq)
Bed 4	3060 x 3000	Media	3950 x 3020			<b>Lot width</b>	<b>10m+</b>

Floorplan and lot width based on Designer facade. Floorplan is NCC 2022\* compliant\*, indicative only, conceptual in nature and subject to change without notice. Floorplan may depict features and/or other products which are not included in the house design, not included in the house price and/or not available from Coral Homes. All measurements are in millimeters unless otherwise stated. Floorplan measurements are approximate and are not to scale. Lot width is a guide only and may change due to developer covenants and Local Authority guidelines. For more information about terms & conditions, see the "Important Information" on (page 1). \*See NCC Qualification in "Important Information" (page 1).

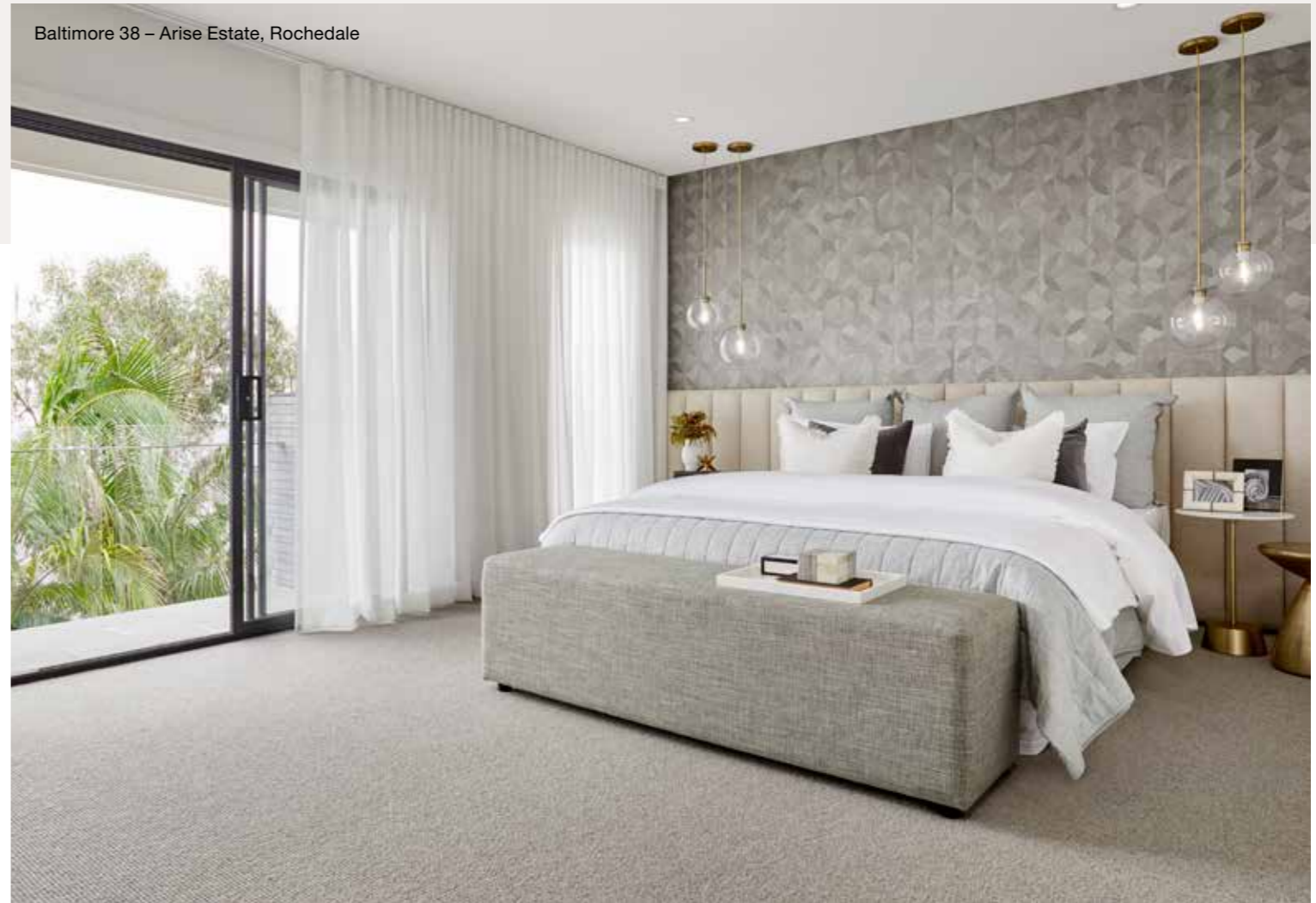
# Baltimore 296Q

5 | 3 | 3 | 2



Master Bed	4470 x 3720	Activity	3540 x 3930	House Length	24.94m	Lower Area	179.60m <sup>2</sup>
Bed 2	3330 x 3250	Dining	4100 x 3000	House Width	8.85m	Upper Area	116.67m <sup>2</sup>
Bed 3	3220 x 3220	Living	4100 x 3540			House Area	296.27m <sup>2</sup> (31.89sq)
Bed 4	3000 x 3000	Media	3950 x 3020			<b>Lot width</b>	<b>10m<sup>+</sup></b>
Guest	3000 x 2750	Outdoor	3000 x 7000				

Floorplan and lot width based on Designer facade. Floorplan is NCC 2022<sup>8</sup> compliant<sup>8</sup>, indicative only, conceptual in nature and subject to change without notice. Floorplan may depict features and/or other products which are not included in the house design, not included in the house price and/or not available from Coral Homes. All measurements are in millimeters unless otherwise stated. Floorplan measurements are approximate and are not to scale. Lot width is a guide only and may change due to developer covenants and Local Authority guidelines. For more information about terms & conditions, see the "Important Information" on (page 1). <sup>8</sup>See NCC Qualification in "Important Information" (page 1).



Baltimore 38 – Arise Estate, Rochedale



Photography depicts items such as homewares, furniture, finishes, landscaping, fencing and may depict items that are upgraded or not supplied by Coral Homes. Speak with your New Home Consultant for more details.



# Baltimore Facades

10m+ Lot Width

Modern



Designer



Hamptons



East Hamptons



Mornington



Vista





# Baltimore 302Q

4 | 3 | 3 | 2



Master Bed	4310 x 4790	Activity	3500 x 4290	Outdoor	3800 x 4040	Lower Area	173.17m <sup>2</sup>
Bed 2	3590 x 3500	Dining	3100 x 3400	House Length	18.06m	Upper Area	128.96m <sup>2</sup>
Bed 3	3100 x 3500	Family	4290 x 5000	House Width	10.90m	House Area	302.13m <sup>2</sup> (32.52sq)
Bed 4	3100 x 3260	Living	4210 x 3130			<b>Lot width</b>	<b>12m<sup>+</sup></b>

Floorplan and lot width based on Designer facade. Floorplan is NCC 2022<sup>®</sup> compliant<sup>†</sup>, indicative only, conceptual in nature and subject to change without notice. Floorplan may depict features and/or other products which are not included in the house design, not included in the house price and/or not available from Coral Homes. All measurements are in millimeters unless otherwise stated. Floorplan measurements are approximate and are not to scale. Lot width is a guide only and may change due to developer covenants and Local Authority guidelines. For more information about terms & conditions, see the "Important Information" on (page 1). <sup>†</sup>See NCC Qualification in "Important Information" (page 1).



Photography depicts items such as homewares, furniture, finishes, landscaping, fencing and may depict items that are upgraded or not supplied by Coral Homes. Speak with your New Home Consultant for more details.



# Baltimore 331Q

Most popular

5 | 3 | 3 | 2



Master Bed	4590 x 4660	Activity	4295 x 4510	House Length	19.55m	Lower Area	187.67m <sup>2</sup>
Bed 2	3130 x 3200	Dining	3310 x 3500	House Width	10.90m	Upper Area	144.19m <sup>2</sup>
Bed 3	3500 x 3350	Family	4495 x 5000			House Area	331.86m <sup>2</sup> (35.72sq)
Bed 4	3500 x 3500	Living	3550 x 3110			<b>Lot width</b>	<b>12m+</b>
Guest	2950 x 3180	Outdoor	3790 x 4040				

Floorplan and lot width based on Designer facade. Floorplan is NCC 2022\* compliant\*, indicative only, conceptual in nature and subject to change without notice. Floorplan may depict features and/or other products which are not included in the house design, not included in the house price and/or not available from Coral Homes. All measurements are in millimeters unless otherwise stated. Floorplan measurements are approximate and are not to scale. Lot width is a guide only and may change due to developer covenants and Local Authority guidelines. For more information about terms & conditions, see the "Important Information" on (page 1). \*See NCC Qualification in "Important Information" (page 1).

# Baltimore 356Q

5 | 3 | 3 | 2



Master Bed	4580 x 4660	Activity	4260 x 4310	House Length	21.16m	Lower Area	202.58m <sup>2</sup>
Bed 2	3390 x 3500	Dining	3300 x 3500	House Width	10.90m	Upper Area	153.60m <sup>2</sup>
Bed 3	3230 x 3450	Family	4390 x 5000	House Area	356.18m <sup>2</sup> (38.34sq)		
Bed 4	3000 x 3200	Living	4500 x 3220			<b>Lot width</b>	<b>12m<sup>+</sup></b>
Guest	3000 x 3290	Outdoor	4300 x 4040				

Floorplan and lot width based on Designer facade. Floorplan is NCC 2022<sup>®</sup> compliant<sup>†</sup>, indicative only, conceptual in nature and subject to change without notice. Floorplan may depict features and/or other products which are not included in the house design, not included in the house price and/or not available from Coral Homes. All measurements are in millimeters unless otherwise stated. Floorplan measurements are approximate and are not to scale. Lot width is a guide only and may change due to developer covenants and Local Authority guidelines. For more information about terms & conditions, see the "Important Information" on (page 1). <sup>†</sup>See NCC Qualification in "Important Information" (page 1).

# Baltimore 382Q

5 | 3 | 3 | 2



Master Bed	4720 x 4660	Activity	5000 x 4370	House Length	22.73m	Lower Area	216.95m <sup>2</sup>
Bed 2	3500 x 3220	Dining	3400 x 3500	House Width	10.90m	Upper Area	165.64m <sup>2</sup>
Bed 3	3870 x 3500	Family	5000 x 5000	House Area	382.59m <sup>2</sup> (41.18sq)		
Bed 4	3370 x 3500	Living	4500 x 3220			<b>Lot width</b>	<b>12m<sup>+</sup></b>
Guest	3500 x 3330	Outdoor	4530 x 4040				

Floorplan and lot width based on Designer facade. Floorplan is NCC 2022<sup>®</sup> compliant<sup>†</sup>, indicative only, conceptual in nature and subject to change without notice. Floorplan may depict features and/or other products which are not included in the house design, not included in the house price and/or not available from Coral Homes. All measurements are in millimeters unless otherwise stated. Floorplan measurements are approximate and are not to scale. Lot width is a guide only and may change due to developer covenants and Local Authority guidelines. For more information about terms & conditions, see the "Important Information" on (page 1). <sup>†</sup>See NCC Qualification in "Important Information" (page 1).



# Baltimore Facades

12m+ Lot Width

Modern



Hamptons



Vantage Display Facade



Hamptons (Balcony)



Vista



Designer





# Bentley Series

The beautiful Bentley Series is designed with families in mind. These double storey floorplans seamlessly flow from inside to outside, with the open-plan living area opening onto the alfresco. The Bentley has four bedrooms – each with walk-in robes – and three main living spaces, including a media room, family room and upstairs retreat.



Scan to view series

Bentley 38 (Modern Facade) – Aura Estate, Bells Creek

On display



Bentley 38 – Aura Estate, Bells Creek



Bentley 38 – Aura Estate, Bells Creek



Bentley 38 – Aura Estate, Bells Creek



# Bentley 300Q

4 | 3 | 3.5 | 2

Bentley 38 – Aura Estate, Bells Creek



Master Bed	4630 x 4320	Activity	3430 x 4220	Outdoor	2900 x 5450	Lower Area	161.59m <sup>2</sup>
Bed 2	3720 x 3840	Dining	4630 x 2990	House Length	17.54m	Upper Area	138.90m <sup>2</sup>
Bed 3	3120 x 3420	Family	4700 x 3790	House Width	11.30m	House Area	300.49m <sup>2</sup> (32.35sq)
Bed 4	3220 x 3220	Living	4020 x 3530			<b>Lot width</b>	<b>12.5m+</b>

Floorplan and lot width based on Designer facade. Floorplan is NCC 2022\* compliant\*, indicative only, conceptual in nature and subject to change without notice. Floorplan may depict features and/or other products which are not included in the house design, not included in the house price and/or not available from Coral Homes. All measurements are in millimeters unless otherwise stated. Floorplan measurements are approximate and are not to scale. Lot width is a guide only and may change due to developer covenants and Local Authority guidelines. For more information about terms & conditions, see the "Important Information" on (page 1). \*See NCC Qualification in "Important Information" (page 1).

# Bentley 329Q

4 | 3 | 3.5 | 2



Master Bed	4620 x 4420	Dining	4620 x 2980	Outdoor	2900 x 5450	Lower Area	176.99m <sup>2</sup>
Bed 2	4000 x 3990	Family	4690 x 3900	House Length	15.80m	Upper Area	152.03m <sup>2</sup>
Bed 3	3400 x 3370	Study	2900 x 3470	House Width	11.65m	House Area	329.02m <sup>2</sup> (35.42sq)
Bed 4	3370 x 3320	Media	3920 x 3820			<b>Lot width</b>	<b>13m<sup>+</sup></b>

Floorplan and lot width based on Designer facade. Floorplan is NCC 2022<sup>8</sup> compliant<sup>8</sup>, indicative only, conceptual in nature and subject to change without notice. Floorplan may depict features and/or other products which are not included in the house design, not included in the house price and/or not available from Coral Homes. All measurements are in millimeters unless otherwise stated. Floorplan measurements are approximate and are not to scale. Lot width is a guide only and may change due to developer covenants and Local Authority guidelines. For more information about terms & conditions, see the "Important Information" on (page 1). <sup>8</sup>See NCC Qualification in "Important Information" (page 1).

Bentley 38 – Aura Estate, Bells Creek



Bentley 38 – Aura Estate, Bells Creek



Photography depicts items such as homewares, furniture, finishes, landscaping, fencing and may depict items that are upgraded or not supplied by Coral Homes. Speak with your New Home Consultant for more details.



Bentley 38 – Aura Estate, Bells Creek



# Bentley 356Q

Most popular

4 | 3 | 3.5 | 2

Bentley 38 – Aura Estate, Bells Creek



Master Bed	4920 x 4780	Activity	4200 x 4710	Media	4000 x 4030	Lower Area	190.49m <sup>2</sup>
Bed 2	4400 x 4250	Dining	4900 x 3100	Outdoor	3000 x 6000	Upper Area	165.78m <sup>2</sup>
Bed 3	3800 x 3520	Family	4990 x 4230	House Length	19.38m	House Area	356.27m <sup>2</sup> (38.35sq)
Bed 4	3200 x 3600	Study	3000 x 3750	House Width	11.90m	<b>Lot width</b>	<b>13m+</b>

Floorplan and lot width based on Designer facade. Floorplan is NCC 2022\* compliant\*, indicative only, conceptual in nature and subject to change without notice. Floorplan may depict features and/or other products which are not included in the house design, not included in the house price and/or not available from Coral Homes. All measurements are in millimeters unless otherwise stated. Floorplan measurements are approximate and are not to scale. Lot width is a guide only and may change due to developer covenants and Local Authority guidelines. For more information about terms & conditions, see the "Important Information" on (page 1). \*See NCC Qualification in "Important Information" (page 1).

# Bentley 383Q

4 | 3 | 3.5 | 2



Master Bed	5000 x 5030	Activity	5000 x 5030	Outdoor	3250 x 6000	Lower Area	204.98m <sup>2</sup>
Bed 2	3900 x 4260	Dining	5000 x 3090	House Length	20.43m	Upper Area	178.34m <sup>2</sup>
Bed 3	3660 x 3520	Family	5070 x 4490	House Width	12.15m	House Area	383.32m <sup>2</sup> (41.26sq)
Bed 4	3620 x 3650	Study	3250 x 3970			<b>Lot width</b>	<b>13.5m<sup>+</sup></b>
		Media	4270 x 4230				

Floorplan and lot width based on Designer facade. Floorplan is NCC 2022<sup>®</sup> compliant<sup>†</sup>, indicative only, conceptual in nature and subject to change without notice. Floorplan may depict features and/or other products which are not included in the house design, not included in the house price and/or not available from Coral Homes. All measurements are in millimeters unless otherwise stated. Floorplan measurements are approximate and are not to scale. Lot width is a guide only and may change due to developer covenants and Local Authority guidelines. For more information about terms & conditions, see the "Important Information" on (page 1). <sup>†</sup>See NCC Qualification in "Important Information" (page 1).

# Bentley 406Q

5 | 3 | 3.5 | 2



Master Bed	4610 x 5100	Activity	4170 x 5210	House Length	21.54m	Lower Area	216.94m <sup>2</sup>
Bed 2	4110 x 4360	Dining	5100 x 3080	House Width	12.25m	Upper Area	189.33m <sup>2</sup>
Bed 3	4160 x 3570	Family	5100 x 4600			House Area	406.27m <sup>2</sup> (43.73sq)
Bed 4	3920 x 4280	Media	4210 x 4210			<b>Lot width</b>	<b>13.5m<sup>+</sup></b>
Guest	3210 x 4280	Outdoor	3500 x 6000				

Floorplan and lot width based on Designer facade. Floorplan is NCC 2022<sup>®</sup> compliant<sup>†</sup>, indicative only, conceptual in nature and subject to change without notice. Floorplan may depict features and/or other products which are not included in the house design, not included in the house price and/or not available from Coral Homes. All measurements are in millimeters unless otherwise stated. Floorplan measurements are approximate and are not to scale. Lot width is a guide only and may change due to developer covenants and Local Authority guidelines. For more information about terms & conditions, see the "Important Information" on (page 1). <sup>†</sup>See NCC Qualification in "Important Information" (page 1).



# Bentley Facades

13.5m+ Lot Width

Modern Display Facade



Vista



Hamptons



Hamptons (Balcony)



Designer





# Boston Series

The Boston Series has been designed to suit 12m+ lot widths. Choose from many flexible floorplans and plenty of stunning facades to bring the Boston Series to life. The double-storey homes feature an impressive open-plan kitchen, dining and family living that opens seamlessly onto the outdoor entertaining space.



Scan to view series

Boston 42 MKII – Newport Estate, Newport



Boston 42 MKII (Montauk Facade) – Newport Estate, Newport



On display

Boston 42 MKII – Newport Estate, Newport



# Boston 308Q

6 | 3 | 3.5 | 2



Master Bed	4100 x 3860	Guest	3220 x 3080	Outdoor	3000 x 4540	Lower Area	172.86m <sup>2</sup>
Bed 2	3130 x 3060	Activity	3410 x 3730	House Length	18.44m	Upper Area	135.75m <sup>2</sup>
Bed 3	2900 x 2870	Dining	3000 x 3750	House Width	10.80m	House Area	308.61m <sup>2</sup> (33.22sq)
Bed 4	3120 x 2870	Family	4030 x 4540	<b>Lot width 12m<sup>+</sup></b>			
Bed 5	3000 x 2850	Media	3800 x 3010				

Floorplan and lot width based on Designer facade. Floorplan is NCC 2022<sup>®</sup> compliant<sup>†</sup>, indicative only, conceptual in nature and subject to change without notice. Floorplan may depict features and/or other products which are not included in the house design, not included in the house price and/or not available from Coral Homes. All measurements are in millimeters unless otherwise stated. Floorplan measurements are approximate and are not to scale. Lot width is a guide only and may change due to developer covenants and Local Authority guidelines. For more information about terms & conditions, see the "Important Information" on (page 1). <sup>†</sup>See NCC Qualification in "Important Information" (page 1).

# Boston 327Q

5 | 3 | 3.5 | 2



Master Bed	3815 x 4200	Activity	4680 x 4730	House Length	18.81m	Lower Area	183.39m <sup>2</sup>
Bed 2	3430 x 3250	Dining	3200 x 4000	House Width	11.20m	Upper Area	143.61m <sup>2</sup>
Bed 3	3130 x 3180	Family	4200 x 4690	House Area	327.00m <sup>2</sup> (35.20sq)	<b>Lot width 12.5m<sup>+</sup></b>	
Bed 4	3300 x 3000	Media	3800 x 3330				
Guest	3220 x 3400	Outdoor	3200 x 4690				

Floorplan and lot width based on Designer facade. Floorplan is NCC 2022<sup>®</sup> compliant<sup>†</sup>, indicative only, conceptual in nature and subject to change without notice. Floorplan may depict features and/or other products which are not included in the house design, not included in the house price and/or not available from Coral Homes. All measurements are in millimeters unless otherwise stated. Floorplan measurements are approximate and are not to scale. Lot width is a guide only and may change due to developer covenants and Local Authority guidelines. For more information about terms & conditions, see the "Important Information" on (page 1). <sup>†</sup>See NCC Qualification in "Important Information" (page 1).



# Boston Facades

12.5m+ Lot Width

Hamptons



Modern



Vantage



Vaucluse



Designer



Boston 42 MKII – Newport Estate, Newport



# Boston 354Q

5 | 3 | 3.5 | 2

Boston 42 MKII – Newport Estate, Newport



Master Bed	4680 x 4220	Activity	4340 x 3705	House Length	19.52m	Lower Area	198.65m <sup>2</sup>
Bed 2	3420 x 3300	Dining	3095 x 4000	House Width	11.90m	Upper Area	155.89m <sup>2</sup>
Bed 3	3520 x 3100	Family	4100 x 4890			House Area	354.54m <sup>2</sup> (38.16sq)
Bed 4	3170 x 3000	Media	4420 x 3900			<b>Lot width</b>	<b>13m<sup>+</sup></b>
Guest	3320 x 3000	Outdoor	3095 x 4890				

Floorplan and lot width based on Designer facade. Floorplan is NCC 2022\* compliant\*, indicative only, conceptual in nature and subject to change without notice. Floorplan may depict features and/or other products which are not included in the house design, not included in the house price and/or not available from Coral Homes. All measurements are in millimeters unless otherwise stated. Floorplan measurements are approximate and are not to scale. Lot width is a guide only and may change due to developer covenants and Local Authority guidelines. For more information about terms & conditions, see the "Important Information" on (page 1). \*See NCC Qualification in "Important Information" (page 1).



# Boston 374Q

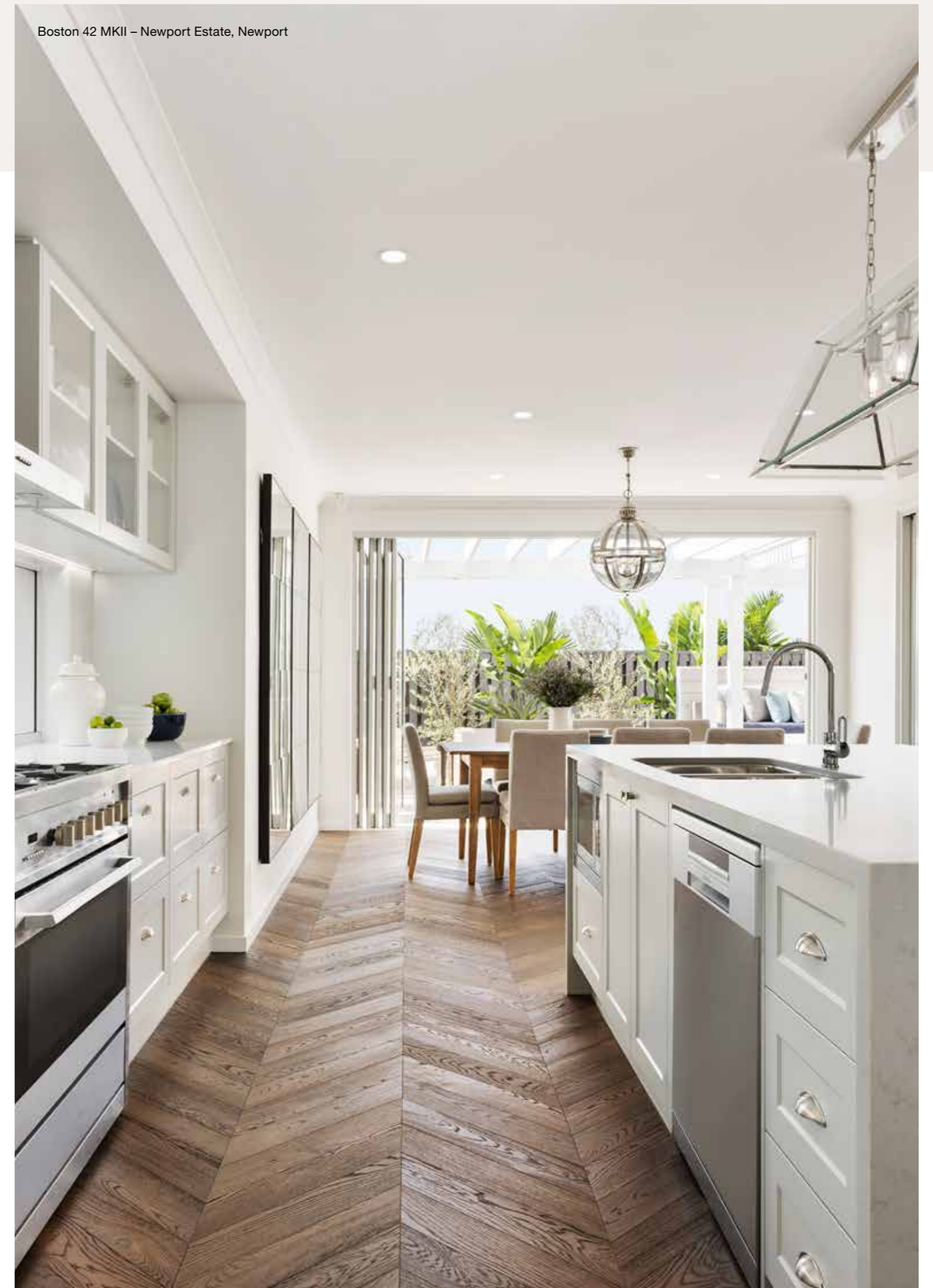
5 | 3 | 4 | 2



Master Bed	4600 x 4470	Activity	4110 x 3825	House Length	20.475m	Lower Area	209.72m <sup>2</sup>
Bed 2	3520 x 3300	Dining	3360 x 4000	House Width	12.00m	Upper Area	164.65m <sup>2</sup>
Bed 3	3420 x 3200	Family	4400 x 3825			House Area	374.37m <sup>2</sup> (40.30sq)
Bed 4	3100 x 3000	Media	4520 x 4000			<b>Lot width</b>	<b>13.5m<sup>+</sup></b>
Guest	3495 x 3560	Outdoor	3300 x 4990				

Floorplan and lot width based on Designer facade. Floorplan is NCC 2022<sup>®</sup> compliant<sup>†</sup>, indicative only, conceptual in nature and subject to change without notice. Floorplan may depict features and/or other products which are not included in the house design, not included in the house price and/or not available from Coral Homes. All measurements are in millimeters unless otherwise stated. Floorplan measurements are approximate and are not to scale. Lot width is a guide only and may change due to developer covenants and Local Authority guidelines. For more information about terms & conditions, see the "Important Information" on (page 1). <sup>†</sup>See NCC Qualification in "Important Information" (page 1).

Boston 42 MKII – Newport Estate, Newport



Photography depicts items such as homewares, furniture, finishes, landscaping, fencing and may depict items that are upgraded or not supplied by Coral Homes. Speak with your New Home Consultant for more details.



# Boston Facades

13.5m+ Lot Width

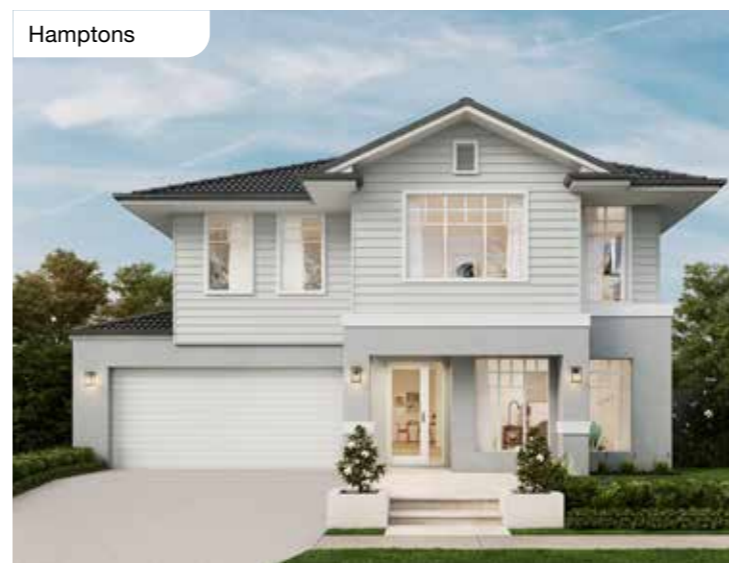
Montauk Display Facade



Modern



Hamptons



Vantage



Vaucluse



Designer





# Monash Series

The Monash Series is a collection of spacious double-storey homes, designed specifically for lot widths of 12m or more. With floorplans available in varying sizes and layouts options, the Monash Series has multiple living spaces – perfect for large or multi-generational families.



Scan to view series

Monash 33 MKII – Paradise Lakes Estate, Willawong



Monash 33 MKII (Hamptons Facade) – Paradise Lakes Estate, Willawong



On display

Monash 33 MKII – Paradise Lakes Estate, Willawong



# Monash 236Q

4 | 2 | 3 | 2



Master Bed	3500 x 4820	Dining	3050 x 3620	House Length	15.90m	Lower Area	149.50m <sup>2</sup>
Bed 2	2850 x 2800	Family	4120 x 4820	House Width	10.90m	Upper Area	86.82m <sup>2</sup>
Bed 3	3150 x 2900	Living	3790 x 3100	House Area	236.32m <sup>2</sup> (25.44sq)		
Bed 4	2980 x 3030	Outdoor	2790 x 3620	<b>Lot width</b>	<b>12m+</b>		

Floorplan and lot width based on Designer facade. Floorplan is NCC 2022<sup>®</sup> compliant<sup>†</sup>, indicative only, conceptual in nature and subject to change without notice. Floorplan may depict features and/or other products which are not included in the house design, not included in the house price and/or not available from Coral Homes. All measurements are in millimeters unless otherwise stated. Floorplan measurements are approximate and are not to scale. Lot width is a guide only and may change due to developer covenants and Local Authority guidelines. For more information about terms & conditions, see the "Important Information" on (page 1). <sup>†</sup>See NCC Qualification in "Important Information" (page 1).

# Monash 259Q

4 | 3 | 3 | 2



Master Bed	3670 x 4670	Activity	2830 x 4090	Outdoor	3270 x 3620	Lower Area	150.14m <sup>2</sup>
Bed 2	3210 x 3260	Dining	2980 x 3620	House Length	16.17m	Upper Area	109.82m <sup>2</sup>
Bed 3	3380 x 3000	Family	4120 x 4820	House Width	10.90m	House Area	259.96m <sup>2</sup> (27.98sq)
Bed 4	2850 x 2880	Living	3580 x 3100	<b>Lot width</b>	<b>12m+</b>		

Floorplan and lot width based on Designer facade. Floorplan is NCC 2022<sup>®</sup> compliant<sup>†</sup>, indicative only, conceptual in nature and subject to change without notice. Floorplan may depict features and/or other products which are not included in the house design, not included in the house price and/or not available from Coral Homes. All measurements are in millimeters unless otherwise stated. Floorplan measurements are approximate and are not to scale. Lot width is a guide only and may change due to developer covenants and Local Authority guidelines. For more information about terms & conditions, see the "Important Information" on (page 1). <sup>†</sup>See NCC Qualification in "Important Information" (page 1).

# Monash 273Q

4 | 3 | 3 | 2

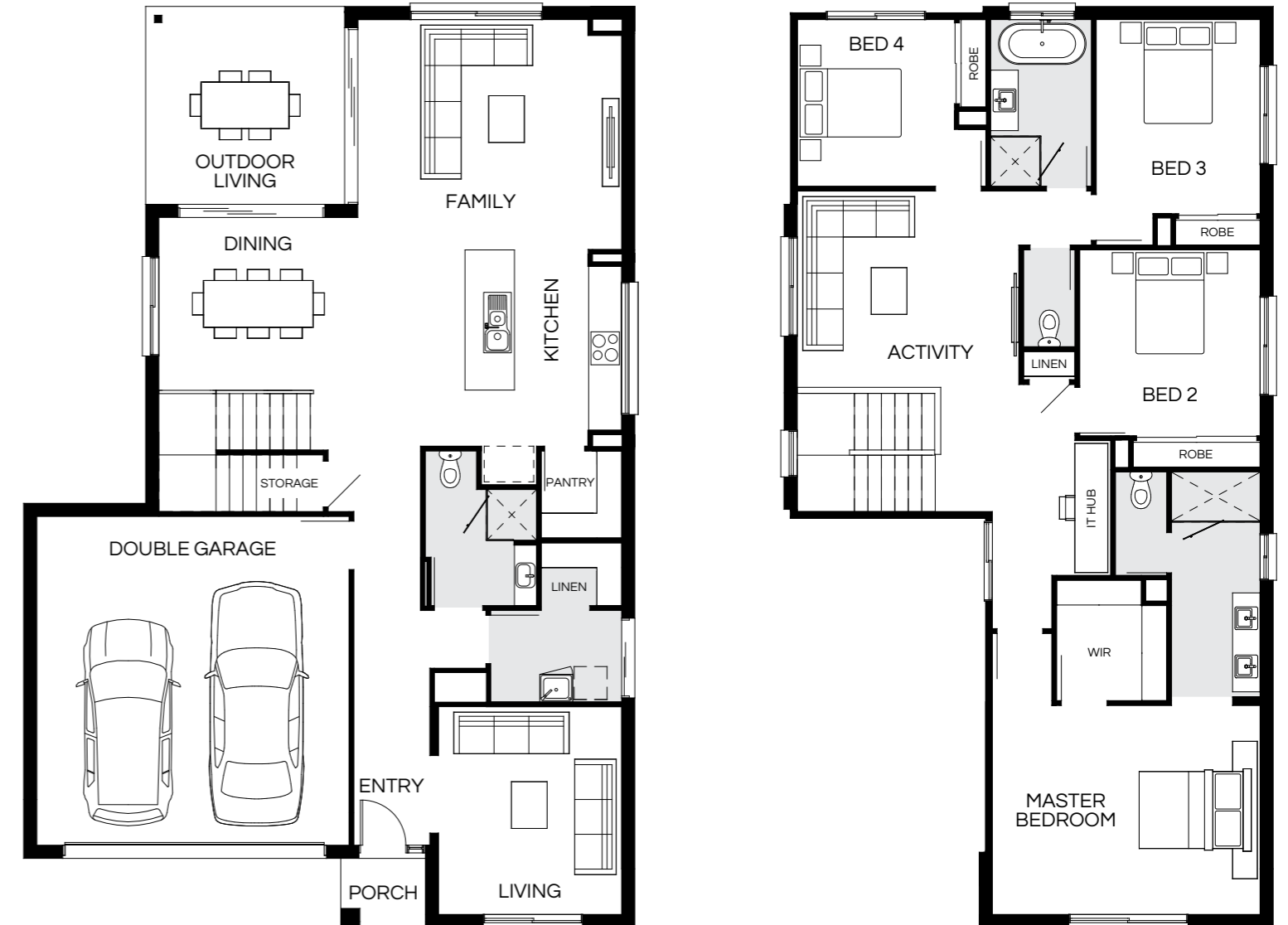


Master Bed	4000 x 4670	Activity	3580 x 4050	Outdoor	3600 x 3620	Lower Area	156.35m <sup>2</sup>
Bed 2	3440 x 3300	Dining	3200 x 3620	House Length	16.50m	Upper Area	117.46m <sup>2</sup>
Bed 3	3510 x 3000	Family	4270 x 4820	House Width	10.90m	House Area	273.45m <sup>2</sup> (29.43sq)
Bed 4	3060 x 2850	Living	3890 x 3130			<b>Lot width</b>	<b>12m<sup>+</sup></b>

Floorplan and lot width based on Designer facade. Floorplan is NCC 2022<sup>®</sup> compliant<sup>\*</sup>, indicative only, conceptual in nature and subject to change without notice. Floorplan may depict features and/or other products which are not included in the house design, not included in the house price and/or not available from Coral Homes. All measurements are in millimeters unless otherwise stated. Floorplan measurements are approximate and are not to scale. Lot width is a guide only and may change due to developer covenants and Local Authority guidelines. For more information about terms & conditions, see the "Important Information" on (page 1). \*See NCC Qualification in "Important Information" (page 1).

# Monash 279Q

4 | 3 | 3 | 2



Master Bed	3820 x 4890	Activity	3590 x 4050	Outdoor	3600 x 3620	Lower Area	159.03m <sup>2</sup>
Bed 2	3400 x 3300	Dining	3200 x 3620	House Length	16.76m	Upper Area	120.45m <sup>2</sup>
Bed 3	3550 x 3000	Family	4200 x 4820	House Width	11.12m	House Area	279.48m <sup>2</sup> (30.08sq)
Bed 4	3050 x 2880	Living	3800 x 3350			<b>Lot width</b>	<b>12.5m<sup>+</sup></b>

Floorplan and lot width based on Designer facade. Floorplan is NCC 2022<sup>®</sup> compliant<sup>\*</sup>, indicative only, conceptual in nature and subject to change without notice. Floorplan may depict features and/or other products which are not included in the house design, not included in the house price and/or not available from Coral Homes. All measurements are in millimeters unless otherwise stated. Floorplan measurements are approximate and are not to scale. Lot width is a guide only and may change due to developer covenants and Local Authority guidelines. For more information about terms & conditions, see the "Important Information" on (page 1). \*See NCC Qualification in "Important Information" (page 1).

# Monash Facades

12.5m+ Lot Width

Modern



Designer



Hamptons Display Facade



Hamptons (Balcony)



Vista



Vaucluse



Piermont



Monash 33 MKII – Paradise Lakes Estate, Willawong



# Monash 280Q

4 | 3 | 3 | 2

Monash 33 MKII – Paradise Lakes Estate, Willawong



Master Bed	5000 x 3795	Activity	3570 x 4350	Outdoor	3760 x 3590	Lower Area	159.47m <sup>2</sup>
Bed 2	3490 x 2900	Dining	2950 x 3590	House Length	16.28m	Upper Area	121.22m <sup>2</sup>
Bed 3	3370 x 2900	Family	4250 x 4750	House Width	11.84m	House Area	280.69m <sup>2</sup> (30.21sq)
Bed 4	3050 x 2900	Living	3820 x 3920			<b>Lot width</b>	<b>13m+</b>

Floorplan and lot width based on Designer facade. Floorplan is NCC 2022\* compliant\*, indicative only, conceptual in nature and subject to change without notice. Floorplan may depict features and/or other products which are not included in the house design, not included in the house price and/or not available from Coral Homes. All measurements are in millimeters unless otherwise stated. Floorplan measurements are approximate and are not to scale. Lot width is a guide only and may change due to developer covenants and Local Authority guidelines. For more information about terms & conditions, see the "Important Information" on (page 1). \*See NCC Qualification in "Important Information" (page 1).



# Monash 294Q

5 | 3 | 3 | 2



Master Bed	3800 x 4670	Activity	3600 x 4050	House Length	18.10m	Lower Area	166.58m <sup>2</sup>
Bed 2	3480 x 3300	Dining	3370 x 3620	House Width	10.90m	Upper Area	127.97m <sup>2</sup>
Bed 3	3370 x 3000	Family	3850 x 4820	House Area	294.55m <sup>2</sup> (31.71sq)		
Bed 4	3100 x 3450	Living	3650 x 3130	<b>Lot width</b>	<b>12m<sup>+</sup></b>		
Bed 5	2950 x 2890	Outdoor	4060 x 3620				

Floorplan and lot width based on Designer facade. Floorplan is NCC 2022<sup>®</sup> compliant<sup>†</sup>, indicative only, conceptual in nature and subject to change without notice. Floorplan may depict features and/or other products which are not included in the house design, not included in the house price and/or not available from Coral Homes. All measurements are in millimeters unless otherwise stated. Floorplan measurements are approximate and are not to scale. Lot width is a guide only and may change due to developer covenants and Local Authority guidelines. For more information about terms & conditions, see the "Important Information" on (page 1). <sup>†</sup>See NCC Qualification in "Important Information" (page 1).

# Monash 299Q

4 | 3 | 3 | 2



Master Bed	5220 x 3915	Activity	3570 x 4105	Outdoor	4180 x 3690	Lower Area	168.96m <sup>2</sup>
Bed 2	3550 x 3000	Dining	3200 x 3690	House Length	16.88m	Upper Area	130.63m <sup>2</sup>
Bed 3	3500 x 3000	Family	4800 x 4900	House Width	12.09m	House Area	299.59m <sup>2</sup> (32.25sq)
Bed 4	3080 x 3600	Living	3820 x 4100	<b>Lot width</b>	<b>13.5m<sup>+</sup></b>		

Floorplan and lot width based on Designer facade. Floorplan is NCC 2022<sup>®</sup> compliant<sup>†</sup>, indicative only, conceptual in nature and subject to change without notice. Floorplan may depict features and/or other products which are not included in the house design, not included in the house price and/or not available from Coral Homes. All measurements are in millimeters unless otherwise stated. Floorplan measurements are approximate and are not to scale. Lot width is a guide only and may change due to developer covenants and Local Authority guidelines. For more information about terms & conditions, see the "Important Information" on (page 1). <sup>†</sup>See NCC Qualification in "Important Information" (page 1).

# Monash 311Q

5 | 4 | 3 | 2



Master Bed	4200 x 3770	Activity	3720 x 4140	Outdoor	3680 x 3620	Lower Area	186.52m <sup>2</sup>
Bed 2	2950 x 3000	Dining	3200 x 3620	House Length	21.20m	Upper Area	124.65m <sup>2</sup>
Bed 3	2930 x 3220	Family	4050 x 4280	House Width	11.60m	House Area	311.17m <sup>2</sup> (33.50sq)
Bed 4	3000 x 3000	Living	4050 x 3700			<b>Lot width</b>	<b>13m<sup>+</sup></b>
Bed 5	3000 x 2930	Media	4080 x 4820				

Floorplan and lot width based on Designer facade. Floorplan is NCC 2022<sup>®</sup> compliant<sup>†</sup>, indicative only, conceptual in nature and subject to change without notice. Floorplan may depict features and/or other products which are not included in the house design, not included in the house price and/or not available from Coral Homes. All measurements are in millimeters unless otherwise stated. Floorplan measurements are approximate and are not to scale. Lot width is a guide only and may change due to developer covenants and Local Authority guidelines. For more information about terms & conditions, see the "Important Information" on (page 1). <sup>†</sup>See NCC Qualification in "Important Information" (page 1).

# Monash 315Q

5 | 3 | 3 | 2



Master Bed	4140 x 4300	Activity	3700 x 3820	House Length	18.45m	Lower Area	177.20m <sup>2</sup>
Bed 2	3370 x 3000	Dining	3400 x 3740	House Width	11.74m	Upper Area	138.42m <sup>2</sup>
Bed 3	3320 x 3000	Family	3740 x 4800			House Area	315.62m <sup>2</sup> (33.97sq)
Bed 4	3110 x 2920	Living	3620 x 3950			<b>Lot width</b>	<b>13m<sup>+</sup></b>
Bed 5	2910 x 3100	Outdoor	3990 x 3740				

Floorplan and lot width based on Designer facade. Floorplan is NCC 2022<sup>®</sup> compliant<sup>†</sup>, indicative only, conceptual in nature and subject to change without notice. Floorplan may depict features and/or other products which are not included in the house design, not included in the house price and/or not available from Coral Homes. All measurements are in millimeters unless otherwise stated. Floorplan measurements are approximate and are not to scale. Lot width is a guide only and may change due to developer covenants and Local Authority guidelines. For more information about terms & conditions, see the "Important Information" on (page 1). <sup>†</sup>See NCC Qualification in "Important Information" (page 1).

Most popular

# Monash 321Q

5 | 3 | 3.5 | 2



Master Bed	4790 x 4200	Activity	4020 x 4030	House Length	17.46m	Lower Area	179.85m <sup>2</sup>
Bed 2	3230 x 3240	Dining	3270 x 3395	House Width	12.02m	Upper Area	141.17m <sup>2</sup>
Bed 3	3230 x 3500	Family	4470 x 5790	House Area	321.02m <sup>2</sup> (34.56sq)	<b>Lot width</b>	<b>13.5m*</b>
Bed 4	3230 x 3400	Living	3670 x 3890				
Bed 5	3000 x 3120	Outdoor	4140 x 3395				

Floorplan and lot width based on Designer facade. Floorplan is NCC 2022<sup>®</sup> compliant<sup>†</sup>, indicative only, conceptual in nature and subject to change without notice. Floorplan may depict features and/or other products which are not included in the house design, not included in the house price and/or not available from Coral Homes. All measurements are in millimeters unless otherwise stated. Floorplan measurements are approximate and are not to scale. Lot width is a guide only and may change due to developer covenants and Local Authority guidelines. For more information about terms & conditions, see the "Important Information" on (page 1). \*See NCC Qualification in "Important Information" (page 1).

# Monash 334Q

5 | 3 | 3.5 | 2



Master Bed	4880 x 4200	Activity	4020 x 4035	House Length	18.18m	Lower Area	186.57m <sup>2</sup>
Bed 2	3480 x 3350	Dining	3270 x 3395	House Width	12.13m	Upper Area	147.90m <sup>2</sup>
Bed 3	3300 x 3610	Family	4570 x 5900	House Area	334.47m <sup>2</sup> (36.00sq)	<b>Lot width</b>	<b>13.5m*</b>
Bed 4	3300 x 3400	Living	3900 x 4160				
Bed 5	3115 x 3230	Outdoor	4210 x 3395				

Floorplan and lot width based on Designer facade. Floorplan is NCC 2022<sup>®</sup> compliant<sup>†</sup>, indicative only, conceptual in nature and subject to change without notice. Floorplan may depict features and/or other products which are not included in the house design, not included in the house price and/or not available from Coral Homes. All measurements are in millimeters unless otherwise stated. Floorplan measurements are approximate and are not to scale. Lot width is a guide only and may change due to developer covenants and Local Authority guidelines. For more information about terms & conditions, see the "Important Information" on (page 1). \*See NCC Qualification in "Important Information" (page 1).

# Monash Facades

13.5m+ Lot Width

Modern



Vista



Hamptons Display Facade



Hamptons (Balcony)



Designer

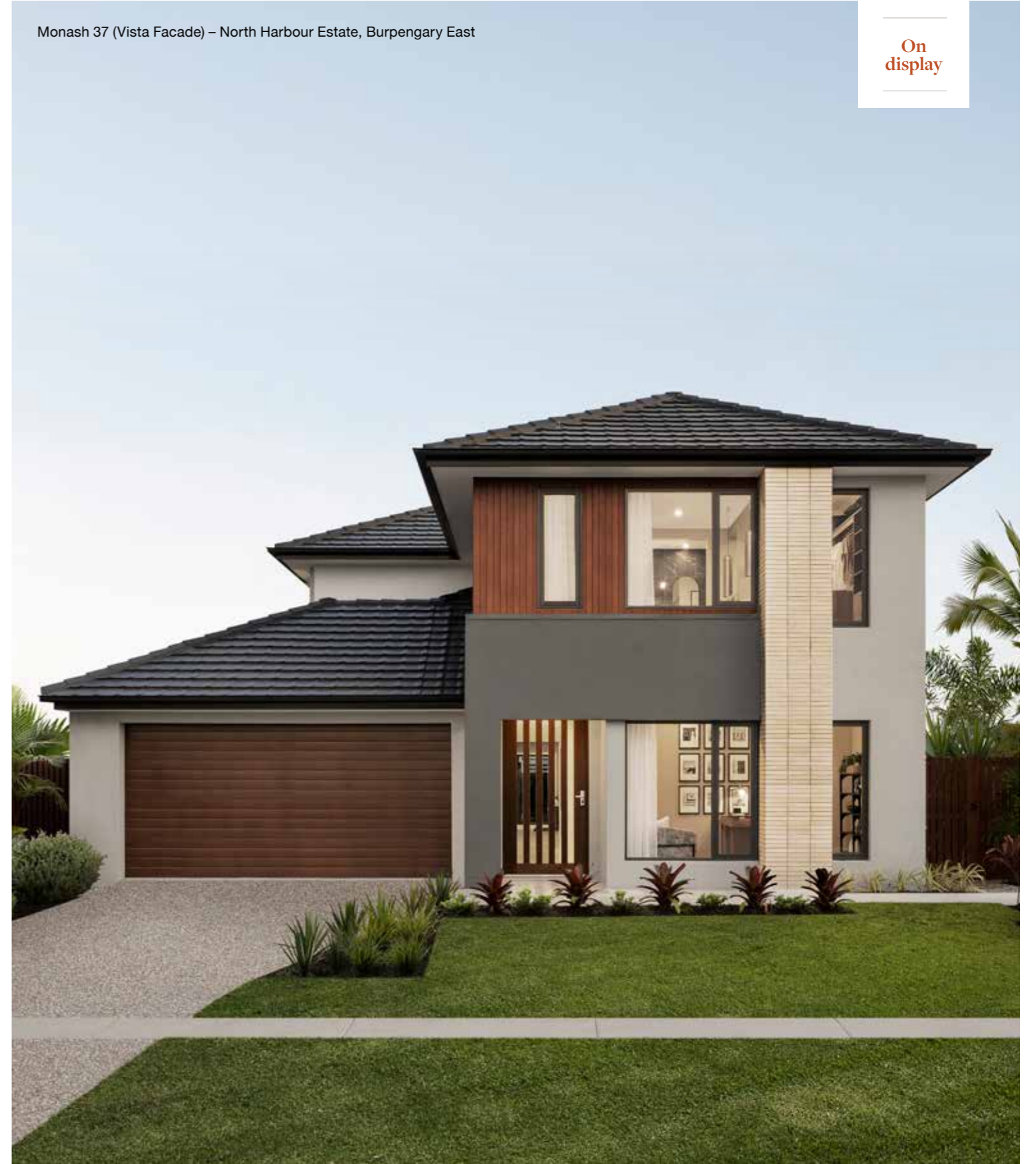


Vaucluse



Monash 37 (Vista Facade) – North Harbour Estate, Burpengary East

On display



# Rochester Series

The Rochester Series has been designed to fit narrow lots of 10m+ widths, offering simple solutions to inner-city family living. These double storey home designs offer a range of flexible floorplans and facades to choose from. Each home design features a large, centrally located kitchen with an island bench and breakfast bar on the lower level.



Scan to view series

Rochester 33 – Newport Estate, Newport



Rochester 33 (Vista Facade) – Newport Estate, Newport

On display



Rochester 33 – Newport Estate, Newport



# Rochester 265Q

5 | 2 | 3 | 2



Master Bed	3830 x 4400	Guest	3000 x 3250	Outdoor	3600 x 2590	Lower Area	150.85m <sup>2</sup>
Bed 2	3050 x 3000	Activity	3525 x 3470	House Length	21.44m	Upper Area	114.60m <sup>2</sup>
Bed 3	3250 x 2950	Dining	3320 x 2590	House Width	8.40m	House Area	265.45m <sup>2</sup> (28.57sq)
Bed 4	3100 x 2950	Living	3600 x 4400			<b>Lot width</b>	<b>10m+</b>

Floorplan and lot width based on Designer facade. Floorplan is NCC 2022<sup>®</sup> compliant<sup>†</sup>, indicative only, conceptual in nature and subject to change without notice. Floorplan may depict features and/or other products which are not included in the house design, not included in the house price and/or not available from Coral Homes. All measurements are in millimeters unless otherwise stated. Floorplan measurements are approximate and are not to scale. Lot width is a guide only and may change due to developer covenants and Local Authority guidelines. For more information about terms & conditions, see the "Important Information" on (page 1). <sup>†</sup>See NCC Qualification in "Important Information" (page 1).

# Rochester 276Q

4 | 3 | 3 | 2



Master Bed	3720 x 4400	Activity	3655 x 3470	Outdoor	4000 x 2590	Lower Area	157.91m <sup>2</sup>
Bed 2	3200 x 3000	Dining	3690 x 2590	House Length	22.355m	Upper Area	118.67m <sup>2</sup>
Bed 3	3050 x 3235	Living	4000 x 4400	House Width	8.40m	House Area	276.58m <sup>2</sup> (29.77sq)
Bed 4	3050 x 3235	Media	3750 x 3300			<b>Lot width</b>	<b>10m+</b>

Floorplan and lot width based on Designer facade. Floorplan is NCC 2022<sup>®</sup> compliant<sup>†</sup>, indicative only, conceptual in nature and subject to change without notice. Floorplan may depict features and/or other products which are not included in the house design, not included in the house price and/or not available from Coral Homes. All measurements are in millimeters unless otherwise stated. Floorplan measurements are approximate and are not to scale. Lot width is a guide only and may change due to developer covenants and Local Authority guidelines. For more information about terms & conditions, see the "Important Information" on (page 1). <sup>†</sup>See NCC Qualification in "Important Information" (page 1).

# Rochester 288Q

5 | 2 | 3 | 2



Master Bed	3920 x 3470	Guest	3300 x 3350	Outdoor	4250 x 2590	Lower Area	165.01m <sup>2</sup>
Bed 2	3400 x 3470	Activity	3950 x 4665	House Length	23.17m	Upper Area	123.80m <sup>2</sup>
Bed 3	3320 x 3000	Dining	3620 x 3290	House Width	8.40m	House Area	288.81m <sup>2</sup> (31.09sq)
Bed 4	3320 x 3000	Living	4250 x 4400	<b>Lot width</b>	<b>10m+</b>		

Floorplan and lot width based on Designer facade. Floorplan is NCC 2022<sup>®</sup> compliant<sup>†</sup>, indicative only, conceptual in nature and subject to change without notice. Floorplan may depict features and/or other products which are not included in the house design, not included in the house price and/or not available from Coral Homes. All measurements are in millimeters unless otherwise stated. Floorplan measurements are approximate and are not to scale. Lot width is a guide only and may change due to developer covenants and Local Authority guidelines. For more information about terms & conditions, see the "Important Information" on (page 1). <sup>†</sup>See NCC Qualification in "Important Information" (page 1).

# Rochester 304Q

4 | 3 | 3 | 2



Master Bed	4200 x 4300	Activity	4000 x 4665	Outdoor	4360 x 2590	Lower Area	174.46m <sup>2</sup>
Bed 2	3500 x 3000	Dining	4190 x 2590	House Length	24.30m	Upper Area	130.23m <sup>2</sup>
Bed 3	3000 x 3270	Living	4360 x 4400	House Width	8.40m	House Area	304.69m <sup>2</sup> (32.80sq)
Bed 4	3200 x 3200	Media	3950 x 3350	<b>Lot width</b>	<b>10m+</b>		

Floorplan and lot width based on Designer facade. Floorplan is NCC 2022<sup>®</sup> compliant<sup>†</sup>, indicative only, conceptual in nature and subject to change without notice. Floorplan may depict features and/or other products which are not included in the house design, not included in the house price and/or not available from Coral Homes. All measurements are in millimeters unless otherwise stated. Floorplan measurements are approximate and are not to scale. Lot width is a guide only and may change due to developer covenants and Local Authority guidelines. For more information about terms & conditions, see the "Important Information" on (page 1). <sup>†</sup>See NCC Qualification in "Important Information" (page 1).

Rochester 33 – Newport Estate, Newport



Rochester 33 – Newport Estate, Newport



# Rochester Facades

10m+ Lot Width

Modern



Designer



Hamptons



East Hamptons



Vista Display Facade



Mornington



Facade images shown are indicative only, conceptual in nature and subject to change. Facade images are to be used as a guide, may depict non-standard items and may not be house specific. Please obtain house specific drawings from your New Home Consultant to assist you in making your facade choice.





# Sacramento Series

Designed with families in mind, this stylish double-storey series offers a variety of flexible floorplans and designer facades blending style with practicality. Customers are greeted with a statement staircase upon entry, flowing through to an open-plan kitchen that overlooks an inviting outdoor space. Upstairs, four bedrooms, including a master (located at the rear for privacy) with ensuite and spacious walk-in robe are complemented by a secondary living space.



Scan to view series

Sacramento 36 – Carina



Sacramento 36 (Modern Facade) – Carina



On display

Sacramento 36 – Carina



# Sacramento 263Q

5 | 2 | 3 | 2



Master Bed	3550 x 4500	Guest	3160 x 3240	Outdoor	2500 x 5000	Lower Area	144.63m <sup>2</sup>
Bed 2	3000 x 3025	Activity	3650 x 5070	House Length	21.72m	Upper Area	118.45m <sup>2</sup>
Bed 3	3000 x 3330	Dining	3475 x 2160	House Width	8.85m	House Area	263.08m <sup>2</sup> (28.32sq)
Bed 4	3000 x 3300	Living	3815 x 4540			<b>Lot width</b>	<b>10m+</b>

Floorplan and lot width based on Designer facade. Floorplan is NCC 2022<sup>®</sup> compliant<sup>†</sup>, indicative only, conceptual in nature and subject to change without notice. Floorplan may depict features and/or other products which are not included in the house design, not included in the house price and/or not available from Coral Homes. All measurements are in millimeters unless otherwise stated. Floorplan measurements are approximate and are not to scale. Lot width is a guide only and may change due to developer covenants and Local Authority guidelines. For more information about terms & conditions, see the "Important Information" on (page 1). <sup>†</sup>See NCC Qualification in "Important Information" (page 1).

# Sacramento 278Q

4 | 3 | 3 | 2



Master Bed	3620 x 4555	Activity	3860 x 5070	Outdoor	2900 x 5000	Lower Area	152.39m <sup>2</sup>
Bed 2	3000 x 3200	Dining	3055 x 2950	House Length	22.89m	Upper Area	125.65m <sup>2</sup>
Bed 3	3200 x 3330	Living	4600 x 3750	House Width	8.85m	House Area	278.04m <sup>2</sup> (29.93sq)
Bed 4	3000 x 3300	Media	3500 x 3740			<b>Lot width</b>	<b>10m+</b>

Floorplan and lot width based on Designer facade. Floorplan is NCC 2022<sup>®</sup> compliant<sup>†</sup>, indicative only, conceptual in nature and subject to change without notice. Floorplan may depict features and/or other products which are not included in the house design, not included in the house price and/or not available from Coral Homes. All measurements are in millimeters unless otherwise stated. Floorplan measurements are approximate and are not to scale. Lot width is a guide only and may change due to developer covenants and Local Authority guidelines. For more information about terms & conditions, see the "Important Information" on (page 1). <sup>†</sup>See NCC Qualification in "Important Information" (page 1).

Sacramento 36 – Carina

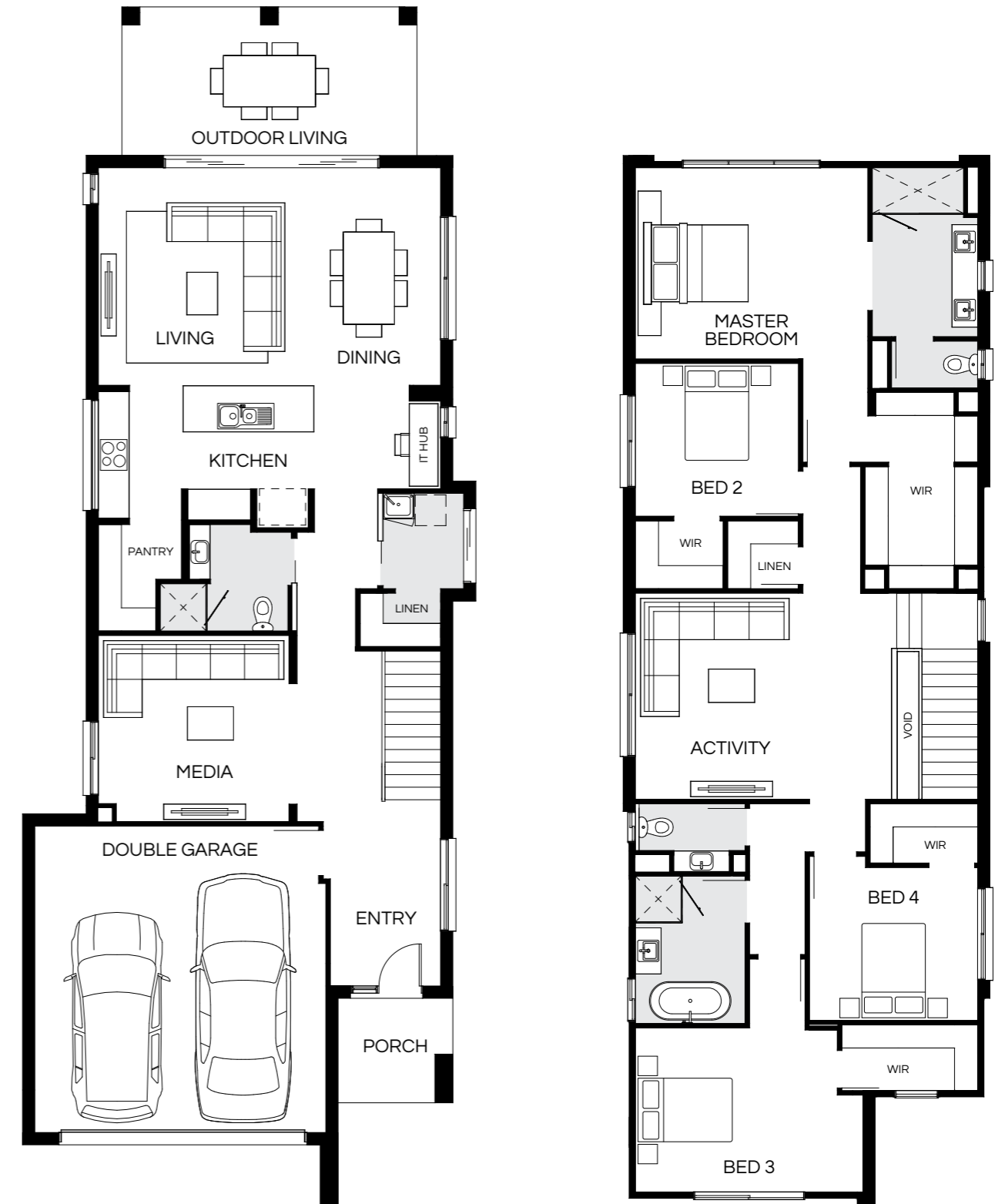


# Sacramento 301Q

Most popular

4 | 3 | 3.5 | 2

Sacramento 36 – Carina



Master Bed	3750 x 4555	Activity	4040 x 5020	Outdoor	2900 x 5760	Lower Area	162.61m <sup>2</sup>
Bed 2	3000 x 3200	Dining	4265 x 2950	House Length	23.41m	Upper Area	138.56m <sup>2</sup>
Bed 3	3220 x 4460	Living	4265 x 3750	House Width	8.85m	House Area	301.17m <sup>2</sup> (32.42sq)
Bed 4	3000 x 3300	Media	3650 x 3740			<b>Lot width</b>	<b>10m+</b>

Floorplan and lot width based on Designer facade. Floorplan is NCC 2022<sup>®</sup> compliant<sup>\*</sup>, indicative only, conceptual in nature and subject to change without notice. Floorplan may depict features and/or other products which are not included in the house design, not included in the house price and/or not available from Coral Homes. All measurements are in millimeters unless otherwise stated. Floorplan measurements are approximate and are not to scale. Lot width is a guide only and may change due to developer covenants and Local Authority guidelines. For more information about terms & conditions, see the "Important Information" on (page 1). <sup>\*</sup>See NCC Qualification in "Important Information" (page 1).

# Sacramento 318Q

4 | 3 | 3.5 | 2



Master Bed	4020 x 4555	Activity	4000 x 5020	Outdoor	2900 x 7160	Lower Area	173.22m <sup>2</sup>
Bed 2	3100 x 3200	Dining	4985 x 2950	House Length	24.26m	Upper Area	144.79m <sup>2</sup>
Bed 3	3120 x 4460	Living	4985 x 3750	House Width	8.85m	House Area	318.01m <sup>2</sup> (34.23sq)
Bed 4	3100 x 3300	Media	3650 x 3740			<b>Lot width</b>	<b>10m+</b>

Floorplan and lot width based on Designer facade. Floorplan is NCC 2022<sup>®</sup> compliant<sup>†</sup>, indicative only, conceptual in nature and subject to change without notice. Floorplan may depict features and/or other products which are not included in the house design, not included in the house price and/or not available from Coral Homes. All measurements are in millimeters unless otherwise stated. Floorplan measurements are approximate and are not to scale. Lot width is a guide only and may change due to developer covenants and Local Authority guidelines. For more information about terms & conditions, see the "Important Information" on (page 1). <sup>†</sup>See NCC Qualification in "Important Information" (page 1).

# Sacramento 326Q

4 | 3 | 3.5 | 2



Master Bed	4700 x 4560	Activity	3600 x 5020	Outdoor	3100 x 7160	Lower Area	178.04m <sup>2</sup>
Bed 2	3000 x 3200	Dining	5320 x 2950	House Length	24.98m	Upper Area	148.58m <sup>2</sup>
Bed 3	3450 x 3315	Living	5320 x 3750	House Width	8.85m	House Area	326.62m <sup>2</sup> (35.16sq)
Bed 4	3250 x 3315	Media	3870 x 3740			<b>Lot width</b>	<b>10m+</b>

Floorplan and lot width based on Designer facade. Floorplan is NCC 2022<sup>®</sup> compliant<sup>†</sup>, indicative only, conceptual in nature and subject to change without notice. Floorplan may depict features and/or other products which are not included in the house design, not included in the house price and/or not available from Coral Homes. All measurements are in millimeters unless otherwise stated. Floorplan measurements are approximate and are not to scale. Lot width is a guide only and may change due to developer covenants and Local Authority guidelines. For more information about terms & conditions, see the "Important Information" on (page 1). <sup>†</sup>See NCC Qualification in "Important Information" (page 1).

Sacramento 36 – Carina



Sacramento 36 – Carina



# Sacramento Facades

13.5m+ Lot Width

Modern Display Facade



Vista



Hamptons



East Hamptons



Designer



Facade images shown are indicative only, conceptual in nature and subject to change. Facade images are to be used as a guide, may depict non-standard items and may not be house specific. Please obtain house specific drawings from your New Home Consultant to assist you in making your facade choice.



# Find Out More



## Website

Want to see more of our home designs?  
Visit our website [coralhomes.com.au](http://coralhomes.com.au)



## Virtual Village

Not enough time to visit our Estates?  
Take an online tour at [coralhomes.com.au/virtual-tours](http://coralhomes.com.au/virtual-tours)



## Social

Connect with us! We update our social network with the best home inspiration, new releases, offers and more!

# CORAL HOMES

© Coral Homes Pty Ltd. The copyright in the floorplans and facades depicted in this brochure are owned by or licensed to Coral Homes Pty Ltd and may not be reproduced, copied or dealt with in any manner which infringes the exclusive rights of Coral Homes Pty Ltd as prescribed by the Copyright Act 1968 without the express written authorisation of Coral Homes Pty Ltd. QBCC 50792/1014053 & NSW OFT 62084C.



Photography depicts items such as homewares, furniture, finishes, landscaping, fencing, swimming pool, water feature and may depict items that are upgraded or not supplied by Coral Homes. Speak with your New Home Consultant for more details.



# Why Coral Homes?

Our foundation was built on transparency, trust and exceptional customer service. Having built over 25,000 homes across three decades, our customers receive a fixed price guarantee, independent quality checks and so much more.



## 30+ Years Experience

Over 25,000 families have trusted us to build their family home. Providing a high level of quality, value for money, security and transparency, is why we are one of Australia's largest home builders today.



## Fixed Price Guarantee

We understand the financial commitments around building a home and provide you with peace of mind by offering contracts with a Fixed Price Guarantee\* upfront.



## Independent Quality Inspections

We have a stringent seven step Quality Assurance process to ensure we build each and every home to a high quality. This process includes an independent quality inspection.



## HIA Professional Major Builder

We're a proud two-time winner of the HIA Professional Major Builder Award, the industry's most prestigious award. We equally value what our customers have to say so we are honoured to be named Product Reviews' 2021 & 2022 winners for customer satisfaction.

# CORAL HOMES

\*The fixed price guarantee is in respect to the cost of construction of your house and associated site works in accordance with the specifications of your contract. Coral Homes reserves the right to vary, terminate or suspend the operation of the Fixed Price Guarantee offer in its absolute discretion, without notice.

[coralhomes.com.au](http://coralhomes.com.au)