

# CORAL HOMES

Double Storey

New South Wales



Photography depicts items such as homewares, furniture, finishes, landscaping and fencing and may depict items that are upgraded or not supplied by Coral Homes. Speak with your New Home Consultant for more details.



# Welcome

Browse through our collection of double storey homes to find your dream design.  
Each spacious floorplan is available in multiple facades to suit your style.  
To discover our full range of homes, visit [coralhomes.com.au](https://coralhomes.com.au)

Discover our designs



Photography throughout this guide depicts items such as homewares, furniture, landscaping, fencing and may depict items that are upgraded or not supplied by Coral Homes. Floorplans throughout this guide are indicative only, conceptual in nature and subject to change. Floorplans may depict features and/or other products which are not included in the house design, not included in the house price and/or not available from Coral Homes. External colours (walls, roof and window/doors) shown in this guide are indicative only, Coral Homes recommend the use of light external colours to minimise costs associated with Energy Efficiency compliance. © Coral Homes Pty Ltd. The copyright in the floorplans and facades depicted in this brochure are owned by or licensed to Coral Homes Pty Ltd and may not be reproduced, copied or dealt with in any manner which infringes the exclusive rights of Coral Homes Pty Ltd as prescribed by the Copyright Act 1968 without the express written authorisation of Coral Homes Pty Ltd. Coral Homes Pty Ltd QBCC 50792, NSW OFT 62084C, Coral Homes Qld Pty Ltd QBCC 1014053. JUL-24








# Double Storey Collection – NSW

We've got a home design to suit your block of land and lifestyle.  
Discover the range.

Lot Width	Home Design					Page
13.5m+	Atlanta 402N	5	4	3.5	2	
13.5m+	Atlanta 421N	5	4	3.5	2	
14m+	Atlanta 446N	5	4	3.5	2	
14.5m+	Atlanta 477N	5	4	5.5	2	
10m+	Baltimore 224N	4	2	3	2	
12.5m+	Baltimore 304N	4	3	3	2	
12.5m+	Baltimore 329N	5	3	3	2	
12.5m+	Baltimore 330N	4	3	2.5	2	
12.5m+	Bentley 302N	4	3	3.5	2	
13m+	Bentley 329N	4	3	3.5	2	
13.5m+	Bentley 358N	4	3	3.5	2	
12.5m+	Boston 309N	6	3	3.5	2	
13m+	Boston 329N	5	3	3.5	2	
13.5m+	Boston 356N	5	3	3.5	2	
13.5m+	Boston 376N	5	3	4	2	

Lot Width	Home Design					Page
10m+	Monash 219N	5	3	3	1	
12.5m+	Monash 236N	5	2	3	2	
10m+	Monash 247N	6	3	3	1	
12.5m+	Monash 260N	4	3	3	2	
10m+	Monash 262N	6	3	3	1	
12.5m+	Monash 275N	4	3	3	2	
12.5m+	Monash 281N	4	3	3	2	
13.5m+	Monash 282N	4	3	3	2	
12.5m+	Monash 296N	5	3	3	2	
12.5m+	Monash 303N	5	4	2.5	2	
13m+	Monash 310N	4	4	2.5	2	
13.5m+	Monash 317N	5	3	3	2	
13.5m+	Monash 323N	5	3	3.5	2	
13.5m+	Monash 336N	5	3	3.5	2	
10m+	Rochester 267N	5	2	3	2	
10m+	Rochester 278N	4	3	3	2	
10m+	Sacramento 280N	4	3	3	2	
10m+	Sacramento 303N	4	3	3.5	2	



# Atlanta Series

Looking for the contemporary home of your dreams? Cue the Atlanta Series. With a light and airy open-plan layout, the Atlanta design is the essence of a spacious family home, made to suit blocks of 13.5m+. Featuring five bedrooms and four living spaces, the Atlanta effortlessly flows from inside to outside, for easy family living.



Scan to view series



Photography depicts items such as homewares, furniture, finishes, landscaping and fencing and may depict items that are upgraded or not supplied by Coral Homes. Speak with your New Home Consultant for more details.

Atlanta (Oakridge Facade) – SkyRidge, Worongary



On display



Photography depicts items such as homewares, furniture, finishes, landscaping and fencing and may depict items that are upgraded or not supplied by Coral Homes. Speak with your New Home Consultant for more details.



# Atlanta 402N

5  | 4  | 3.5  | 2 



**Design options available:** Master to front | Ensuite to all Bedrooms | Additional costs apply for design options.

Master Bed	4745 x 4410	Activity	4200 x 3900	Outdoor	3000 x 5550	Lower Area	218.04m <sup>2</sup>
Bed 2	3400 x 3830	Dining	3000 x 5750	House Length	21.57m	Upper Area	184.80m <sup>2</sup>
Bed 3	3930 x 4140	Family	3865 x 5510	House Width	12m	House Area	402.84m <sup>2</sup> (43.36sq)
Bed 4	3350 x 3140	Living	4700 x 4040			<b>Lot width</b>	<b>13.5m<sup>+</sup></b>
Guest	3600 x 3140	Media	4500 x 3810				

Floorplan and lot width based on Designer facade. Floorplan is indicative only, conceptual in nature and subject to change without notice. Floorplan may depict features and/or other products which are not included in the house design, not included in the house price and/or not available from Coral Homes. All measurements are in millimetres unless otherwise stated. Floorplan measurements are approximate and are not to scale. Lot width is a guide only and may change due to developer covenants and Local Authority guidelines. For more information speak to your Coral Homes New Home Consultant. © Coral Homes Pty Ltd.

Atlanta – SkyRidge, Worongary



Atlanta – SkyRidge, Worongary



Photography depicts items such as homewares, furniture, finishes, landscaping and fencing and may depict items that are upgraded or not supplied by Coral Homes. Speak with your New Home Consultant for more details.



# Atlanta 421N

5  | 4  | 3.5  | 2 



Design options available: Master to front   Ensuite to all Bedrooms   Additional costs apply for design options.							
Master Bed	5040 x 4600	Activity	4200 x 4090	Outdoor	3000 x 5550	Lower Area	227.49m²
Bed 2	3650 x 3830	Dining	3020 x 5800	House Length	22.11m	Upper Area	194.11m²
Bed 3	3930 x 4140	Family	4250 x 5630	House Width	12.19m	House Area	421.60m² (45.38sq)
Bed 4	3600 x 3140	Living	5000 x 4110			Lot width	13.5m*
Guest	3500 x 3140	Media	4600 x 4000				

Floorplan and lot width based on Designer facade. Floorplan is indicative only, conceptual in nature and subject to change without notice. Floorplan may depict features and/or other products which are not included in the house design, not included in the house price and/or not available from Coral Homes. All measurements are in millimetres unless otherwise stated. Floorplan measurements are approximate and are not to scale. Lot width is a guide only and may change due to developer covenants and Local Authority guidelines. For more information speak to your Coral Homes New Home Consultant. © Coral Homes Pty Ltd.



Photography depicts items such as homewares, furniture, finishes, landscaping and fencing and may depict items that are upgraded or not supplied by Coral Homes. Speak with your New Home Consultant for more details.

# Atlanta 446N

5  | 4  | 3.5  | 2 



Design options available: Master to front | Ensuite to all Bedrooms | Additional costs apply for design options.

Master Bed	5040 x 4800	Activity	4200 x 4200	Outdoor	3500 x 6200	Lower Area	243.70m <sup>2</sup>
Bed 2	3850 x 3830	Dining	3200 x 6145	House Length	22.81m	Upper Area	202.72m <sup>2</sup>
Bed 3	3930 x 4030	Family	4260 x 5805	House Width	12.89m	House Area	446.42m <sup>2</sup> (48.05sq)
Bed 4	3600 x 3170	Living	5000 x 4185			Lot width	14m <sup>+</sup>
Guest	3630 x 3170	Media	4600 x 4200				

Floorplan and lot width based on Designer facade. Floorplan is indicative only, conceptual in nature and subject to change without notice. Floorplan may depict features and/or other products which are not included in the house design, not included in the house price and/or not available from Coral Homes. All measurements are in millimetres unless otherwise stated. Floorplan measurements are approximate and are not to scale. Lot width is a guide only and may change due to developer covenants and Local Authority guidelines. For more information speak to your Coral Homes New Home Consultant. © Coral Homes Pty Ltd.

# Atlanta 477N

5  | 4  | 5.5  | 2 



Design options available: Master to front | Additional costs apply for design options.

Master Bed	5315 x 4800	Activity	4400 x 4340	Outdoor	3800 x 6400	Lower Area	260.59m <sup>2</sup>
Bed 2	3720 x 3960	Dining	3465 x 6095	House Length	24.145m	Upper Area	216.91m <sup>2</sup>
Bed 3	3830 x 4230	Family	4400 x 5745	House Width	12.98m	House Area	477.50m <sup>2</sup> (51.40sq)
Bed 4	3600 x 3470	Living	5000 x 4495			Lot width	14.5m <sup>+</sup>
Guest	3630 x 3470	Media	4900 x 4250				

Floorplan and lot width based on Designer facade. Floorplan is indicative only, conceptual in nature and subject to change without notice. Floorplan may depict features and/or other products which are not included in the house design, not included in the house price and/or not available from Coral Homes. All measurements are in millimetres unless otherwise stated. Floorplan measurements are approximate and are not to scale. Lot width is a guide only and may change due to developer covenants and Local Authority guidelines. For more information speak to your Coral Homes New Home Consultant. © Coral Homes Pty Ltd.

Most  
popular





# Atlanta Facades

13.5m\* Lot Width



Scan  
to view  
full facade  
range

Modern Display Facade



Vantage



Hamptons



Hamptons Balcony



Designer



Vista









# Baltimore Series

Designed to suit both traditional and narrow lots of 10m+, the sought-after Baltimore Series has multiple home designs to choose from. These innovative floorplans are designed for contemporary open-plan living, featuring an abundance of family-friendly communal areas.



Baltimore (Vantage Facade) – HomeWorld Leppington, Leppington

On display



Baltimore – HomeWorld Leppington, Leppington



Baltimore – HomeWorld Leppington, Leppington



Photography depicts items such as homewares, furniture, finishes, landscaping and fencing and may depict items that are upgraded or not supplied by Coral Homes. Speak with your New Home Consultant for more details.

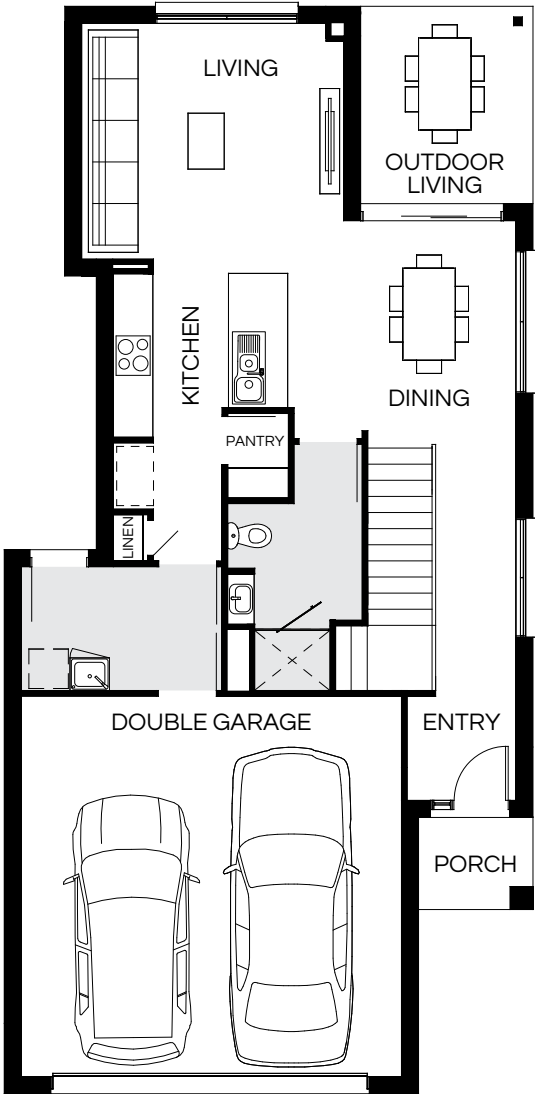
Photography depicts items such as homewares, furniture, finishes, landscaping and fencing and may depict items that are upgraded or not supplied by Coral Homes. Speak with your New Home Consultant for more details.





# Baltimore 224N

4 | 2 | 3 | 2



Master Bed	3600 x 3570	Activity	3630 x 3780	House Length	16.53m	Lower Area	118.43m²
Bed 2	3100 x 3070	Dining	3200 x 3480	House Width	8.04m	Upper Area	106.29m²
Bed 3	3000 x 3000	Living	3600 x 4000			House Area	224.72m² (24.19sq)
Bed 4	3000 x 2850	Outdoor	3000 x 2620			Lot width	10m+

Floorplan and lot width based on Designer facade. Floorplan is indicative only, conceptual in nature and subject to change without notice. Floorplan may depict features and/or other products which are not included in the house design, not included in the house price and/or not available from Coral Homes. All measurements are in millimetres unless otherwise stated. Floorplan measurements are approximate and are not to scale. Lot width is a guide only and may change due to developer covenants and Local Authority guidelines. For more information speak to your Coral Homes New Home Consultant. © Coral Homes Pty Ltd.





# Baltimore Facades

10m+ Lot Width

Modern



Designer



Hamptons



East Hamptons



Mornington



Vista





# Baltimore 304N

4  | 3  | 3  | 2 



Master Bed	4310 x 4790	Activity	3500 x 4290	Outdoor	3800 x 4040	Lower Area	174.33m <sup>2</sup>
Bed 2	3590 x 3500	Dining	3660 x 3400	House Length	18.10m	Upper Area	129.90m <sup>2</sup>
Bed 3	3100 x 3500	Family	3800 x 5000	House Width	10.94m	House Area	304.23m <sup>2</sup> (32.75sq)
Bed 4	3100 x 3260	Living	4210 x 3130			<b>Lot width</b>	<b>12.5m<sup>+</sup></b>

Floorplan and lot width based on Designer facade. Floorplan is indicative only, conceptual in nature and subject to change without notice. Floorplan may depict features and/or other products which are not included in the house design, not included in the house price and/or not available from Coral Homes. All measurements are in millimetres unless otherwise stated. Floorplan measurements are approximate and are not to scale. Lot width is a guide only and may change due to developer covenants and Local Authority guidelines. For more information speak to your Coral Homes New Home Consultant. © Coral Homes Pty Ltd.

Baltimore – Springfield Rise, Spring Mountain





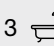
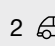
Baltimore – Springfield Rise, Spring Mountain



Photography depicts items such as homewares, furniture, finishes, landscaping and fencing and may depict items that are upgraded or not supplied by Coral Homes. Speak with your New Home Consultant for more details.



# Baltimore 329N



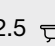
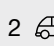
5  | 3  | 3  | 2 



Master Bed	4015 x 4350	Activity	4300 x 4550	House Length	19.40m	Lower Area	184.84m <sup>2</sup>
Bed 2	3060 x 3510	Dining	3385 x 5000	House Width	10.79m	Upper Area	144.80m <sup>2</sup>
Bed 3	3300 x 3250	Family	4300 x 5000			House Area	329.64m <sup>2</sup> (35.48sq)
Bed 4	3220 x 3360	Living	3500 x 3050			Lot width	12.5m <sup>+</sup>
Guest	3000 x 3180	Outdoor	3600 x 4040				

Floorplan and lot width based on Designer facade. Floorplan is indicative only, conceptual in nature and subject to change without notice. Floorplan may depict features and/or other products which are not included in the house design, not included in the house price and/or not available from Coral Homes. All measurements are in millimetres unless otherwise stated. Floorplan measurements are approximate and are not to scale. Lot width is a guide only and may change due to developer covenants and Local Authority guidelines. For more information speak to your Coral Homes New Home Consultant. © Coral Homes Pty Ltd.

# Baltimore 330N

4  | 3  | 2.5  | 2 



Design options available: Master to rear   Additional costs apply for design options.							
Master Bed	4480 x 4660	Activity	3730 x 4510	House Length	19.30m	Lower Area	185.29m <sup>2</sup>
Bed 2	3100 x 3200	Dining	4760 x 3275	House Width	10.94m	Upper Area	144.91m <sup>2</sup>
Bed 3	3300 x 3500	Family	3500 x 5000			House Area	330.20m <sup>2</sup> (35.54sq)
Bed 4	3300 x 3500	Living	4000 x 3050			Lot width	12.5m <sup>+</sup>
Study	3200 x 3300	Outdoor	3500 x 4040				

Floorplan and lot width based on Designer facade. Floorplan is indicative only, conceptual in nature and subject to change without notice. Floorplan may depict features and/or other products which are not included in the house design, not included in the house price and/or not available from Coral Homes. All measurements are in millimetres unless otherwise stated. Floorplan measurements are approximate and are not to scale. Lot width is a guide only and may change due to developer covenants and Local Authority guidelines. For more information speak to your Coral Homes New Home Consultant. © Coral Homes Pty Ltd.

Most popular





# Baltimore Facades

12.5m+ Lot Width

Modern



Hamptons



Vantage Display Facade



Hamptons Balcony



Vista



Designer









# Bentley Series

The beautiful Bentley Series is designed with families in mind. These double storey floorplans seamlessly flow from inside to outside, with the open-plan living area opening onto the alfresco. The Bentley has four bedrooms – each with walk-in robes – and three main living spaces, including a media room, family room and upstairs retreat.



Bentley (Modern Facade) – Aura Estate, Bells Creek



On  
display

Bentley – Aura Estate, Bells Creek



Bentley – Aura Estate, Bells Creek



Photography depicts items such as homewares, furniture, finishes, landscaping and fencing and may depict items that are upgraded or not supplied by Coral Homes. Speak with your New Home Consultant for more details.

Photography depicts items such as homewares, furniture, finishes, landscaping and fencing and may depict items that are upgraded or not supplied by Coral Homes. Speak with your New Home Consultant for more details.

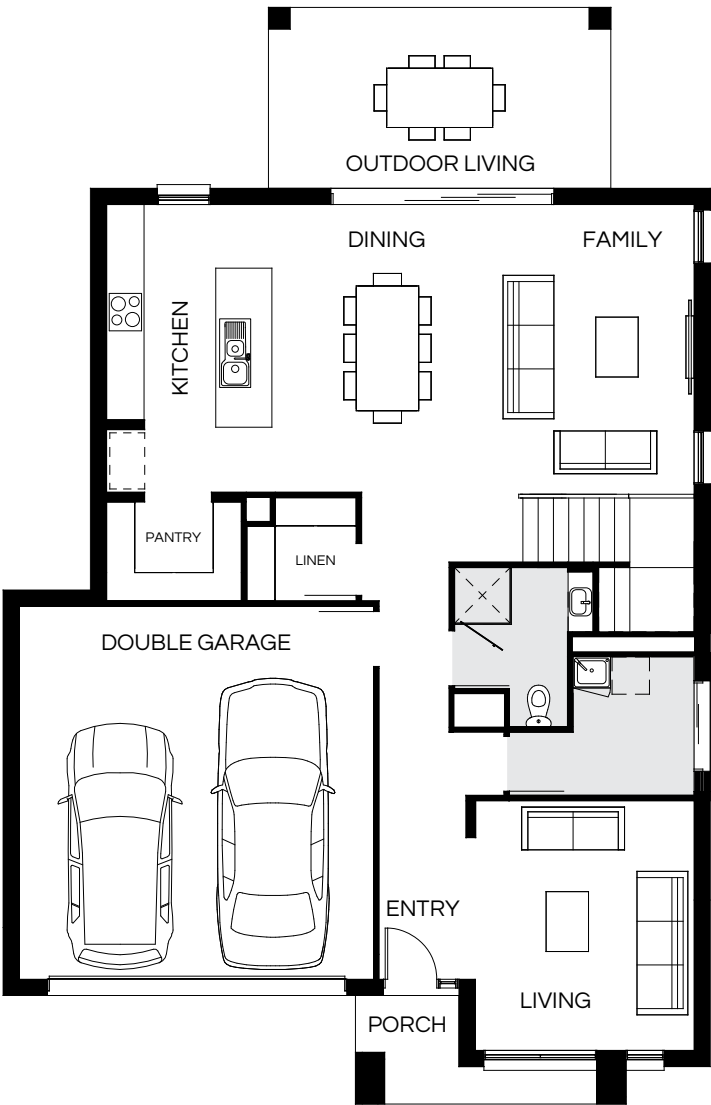




# Bentley 302N

Most popular

4 | 3 | 3.5 | 2




Design options available: Master to front | Additional costs apply for design options.

Master Bed	4630 x 4320	Activity	3430 x 4220	Outdoor	2900 x 5490	Lower Area	162.74m²
Bed 2	3720 x 3840	Dining	4630 x 2990	House Length	17.58m	Upper Area	139.88m²
Bed 3	3120 x 3420	Family	4700 x 3790	House Width	11.34m	House Area	302.62m² (32.57sq)
Bed 4	3220 x 3220	Living	4020 x 3530			Lot width	13m+

Floorplan and lot width based on Designer facade. Floorplan is indicative only, conceptual in nature and subject to change without notice. Floorplan may depict features and/or other products which are not included in the house design, not included in the house price and/or not available from Coral Homes. All measurements are in millimetres unless otherwise stated. Floorplan measurements are approximate and are not to scale. Lot width is a guide only and may change due to developer covenants and Local Authority guidelines. For more information speak to your Coral Homes New Home Consultant. © Coral Homes Pty Ltd.



# Bentley 329N

4  | 3  | 3.5  | 2 



Design options available: Master to front   Additional costs apply for design options.							
Master Bed	4620 x 4420	Activity	4320 x 4350	Study	2900 x 3470	Lower Area	176.45m²
Bed 2	4000 x 3930	Dining	4620 x 2980	Outdoor	2900 x 5450	Upper Area	153.03m²
Bed 3	3400 x 3370	Family	4690 x 3900	House Length	18.74m	House Area	329.48m² (35.47sq)
Bed 4	3370 x 3320	Media	3820 x 3920	House Width	11.45m	Lot width	13m+

Floorplan and lot width based on Designer facade. Floorplan is indicative only, conceptual in nature and subject to change without notice. Floorplan may depict features and/or other products which are not included in the house design, not included in the house price and/or not available from Coral Homes. All measurements are in millimetres unless otherwise stated. Floorplan measurements are approximate and are not to scale. Lot width is a guide only and may change due to developer covenants and Local Authority guidelines. For more information speak to your Coral Homes New Home Consultant. © Coral Homes Pty Ltd.

Bentley – Aura Estate, Bells Creek



Bentley – Aura Estate, Bells Creek



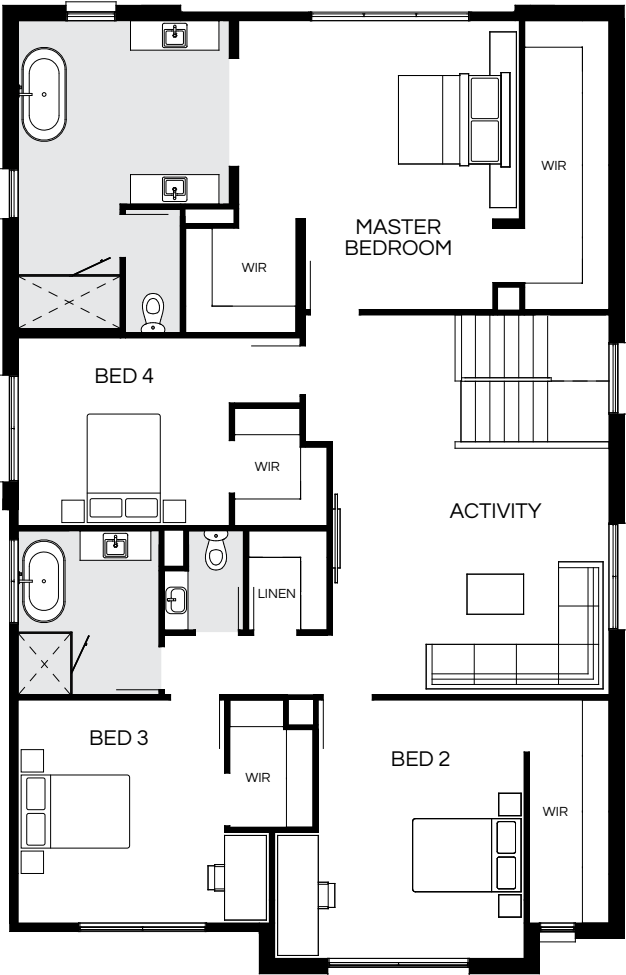
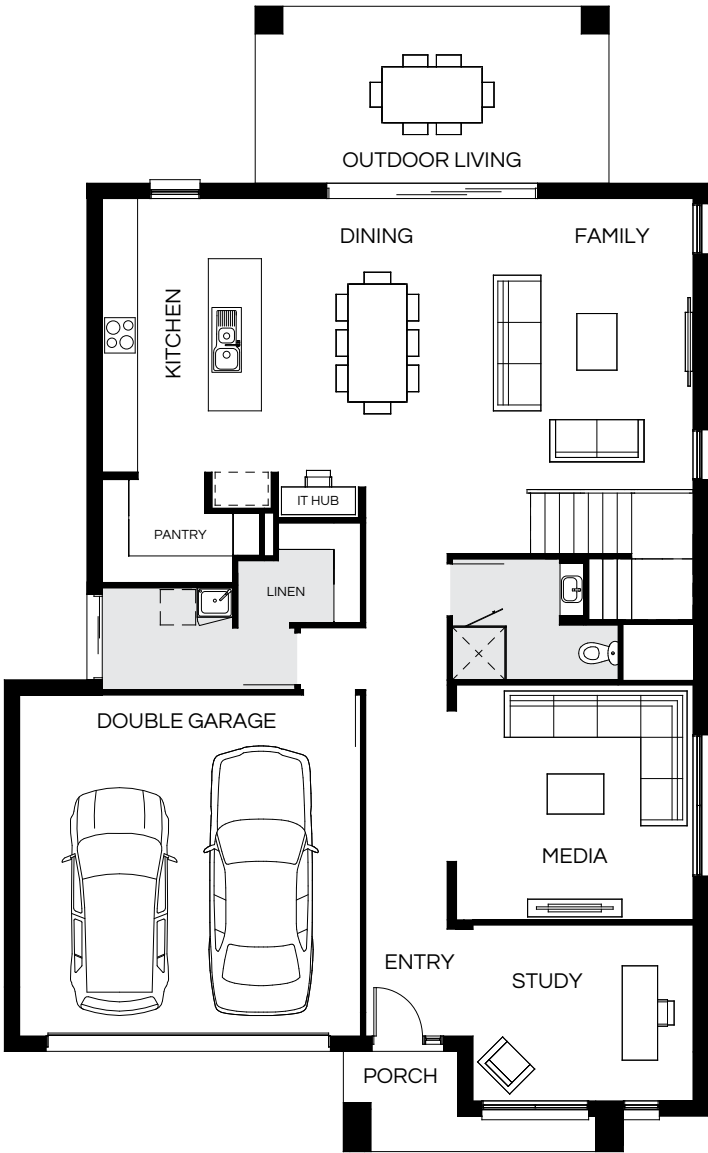
Photography depicts items such as homewares, furniture, finishes, landscaping and fencing and may depict items that are upgraded or not supplied by Coral Homes. Speak with your New Home Consultant for more details.





# Bentley 358N

4 | 3 | 3.5 | 2



Design options available: Master to front   Additional costs apply for design options.							
Master Bed	4920 x 4780	Activity	4200 x 4710	Study	3000 x 3750	Lower Area	191.62m²
Bed 2	4400 x 4250	Dining	4900 x 3100	Outdoor	3000 x 6000	Upper Area	166.85m²
Bed 3	3800 x 3520	Family	4990 x 4230	House Length	19.42m	House Area	358.47m² (38.59sq)
Bed 4	3200 x 3600	Media	4000 x 4030	House Width	11.94m	Lot width	13.5m+

Floorplan and lot width based on Designer facade. Floorplan is indicative only, conceptual in nature and subject to change without notice. Floorplan may depict features and/or other products which are not included in the house design, not included in the house price and/or not available from Coral Homes. All measurements are in millimetres unless otherwise stated. Floorplan measurements are approximate and are not to scale. Lot width is a guide only and may change due to developer covenants and Local Authority guidelines. For more information speak to your Coral Homes New Home Consultant. © Coral Homes Pty Ltd.





# Bentley Facades

12.5m+ Lot Width

Modern Display Facade



Vista



Hamptons



Hamptons Balcony



Designer









# Boston Series

The Boston Series has been designed to suit 12.5m+ lot widths. Choose from many flexible floorplans and plenty of stunning facades to bring the Boston Series to life. The double storey homes feature an impressive open-plan kitchen, dining and family living that opens seamlessly onto the outdoor entertaining space.



Scan to view series

Boston – Newport Estate, Newport



Boston (Montauk Facade) – Newport Estate, Newport






On  
display

Boston – Newport Estate, Newport





# Boston 309N





6  | 3  | 3.5  | 2 



Design options available: Master to rear   Additional costs apply for design options.							
Master Bed	4100 x 3860	Guest	3220 x 3080	Outdoor	3000 x 4540	Lower Area	172.74m²
Bed 2	3130 x 3060	Activity	3410 x 3730	House Length	18.48m	Upper Area	136.74m²
Bed 3	2900 x 2870	Dining	3000 x 3750	House Width	10.64m	House Area	309.48m² (33.31sq)
Bed 4	3120 x 2870	Family	4030 x 4540	<div>Lot width12.5m+</div>			
Bed 5	3000 x 2850	Media	3800 x 3010				

Floorplan and lot width based on Designer facade. Floorplan is indicative only, conceptual in nature and subject to change without notice. Floorplan may depict features and/or other products which are not included in the house design, not included in the house price and/or not available from Coral Homes. All measurements are in millimetres unless otherwise stated. Floorplan measurements are approximate and are not to scale. Lot width is a guide only and may change due to developer covenants and Local Authority guidelines. For more information speak to your Coral Homes New Home Consultant. © Coral Homes Pty Ltd.

# Boston 329N

5  | 3  | 3.5  | 2 



Design options available: Master to front   Additional costs apply for design options.							
Master Bed	3815 x 4200	Activity	4680 x 4730	House Length	18.85m	Lower Area	184.59m²
Bed 2	3430 x 3250	Dining	3200 x 4000	House Width	11.24m	Upper Area	144.50m²
Bed 3	3130 x 3180	Family	4200 x 4690			House Area	329.09m² (35.42sq)
Bed 4	3300 x 3000	Media	3800 x 3330			Lot width	13m+
Guest	3220 x 3400	Outdoor	3200 x 4690				

Floorplan and lot width based on Designer facade. Floorplan is indicative only, conceptual in nature and subject to change without notice. Floorplan may depict features and/or other products which are not included in the house design, not included in the house price and/or not available from Coral Homes. All measurements are in millimetres unless otherwise stated. Floorplan measurements are approximate and are not to scale. Lot width is a guide only and may change due to developer covenants and Local Authority guidelines. For more information speak to your Coral Homes New Home Consultant. © Coral Homes Pty Ltd.

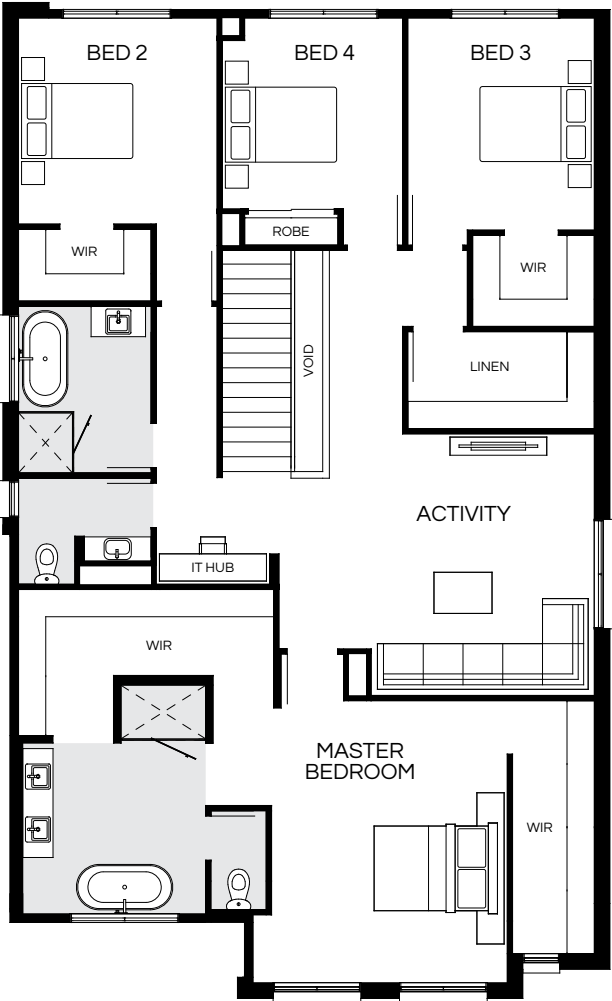
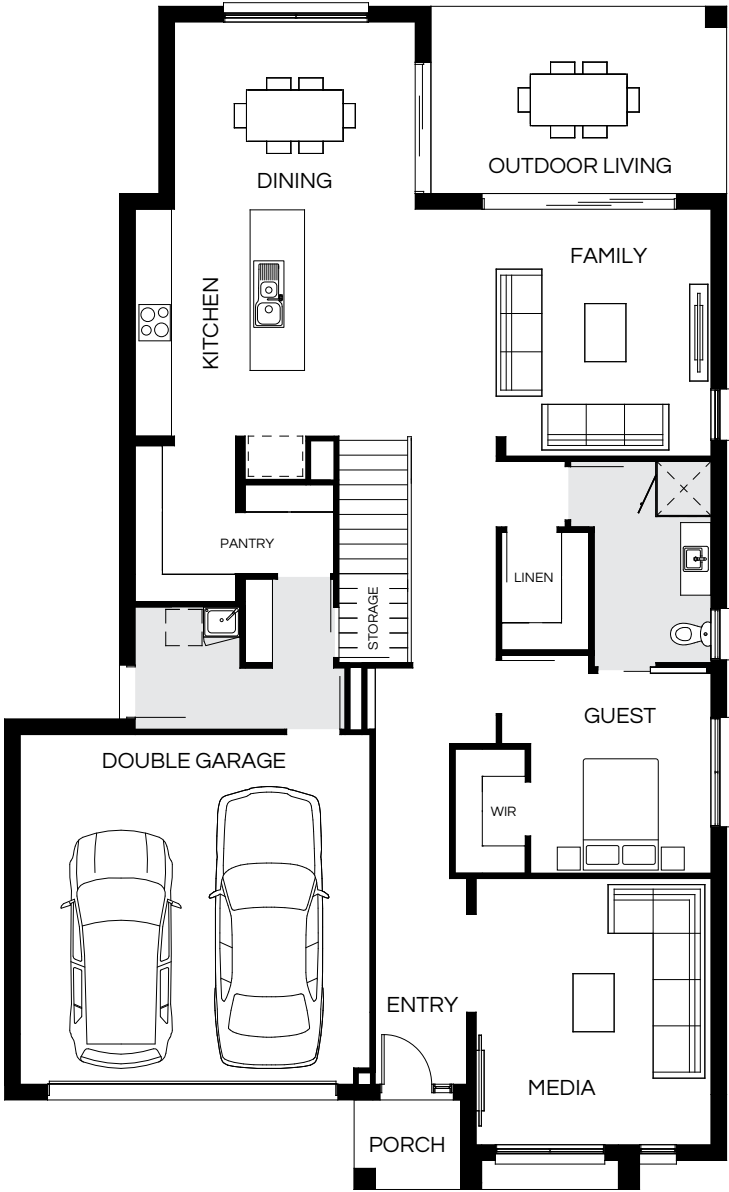
Most popular





# Boston 356N

5 | 3 | 3.5 | 2



Design options available: Master to rear   Additional costs apply for design options.							
Master Bed	4680 x 4220	Activity	4340 x 3705	House Length	19.56m	Lower Area	199.91m²
Bed 2	3420 x 3300	Dining	3095 x 4000	House Width	11.94m	Upper Area	156.94m²
Bed 3	3520 x 3100	Family	4100 x 4890			House Area	356.85m² (38.41sq)
Bed 4	2800 x 3000	Media	4420 x 3900			Lot width	13.5m+
Guest	3320 x 3000	Outdoor	3095 x 4890				

Floorplan and lot width based on Designer facade. Floorplan is indicative only, conceptual in nature and subject to change without notice. Floorplan may depict features and/or other products which are not included in the house design, not included in the house price and/or not available from Coral Homes. All measurements are in millimetres unless otherwise stated. Floorplan measurements are approximate and are not to scale. Lot width is a guide only and may change due to developer covenants and Local Authority guidelines. For more information speak to your Coral Homes New Home Consultant. © Coral Homes Pty Ltd.



# Boston 376N

5  | 3  | 4  | 2 



Design options available: Master to rear   Additional costs apply for design options.					
Master Bed	4600 x 4470	Activity	4110 x 3825	House Length	20.515m
Bed 2	3520 x 3300	Dining	3360 x 3915	House Width	12.04m
Bed 3	3420 x 3200	Family	4400 x 5075	Lower Area	211.02m²
Bed 4	3240 x 3000	Media	4520 x 4000	Upper Area	165.73m²
Guest	3495 x 3560	Outdoor	3300 x 5075	House Area	376.75m² (40.55sq)
				Lot width	13.5m*

Floorplan and lot width based on Designer facade. Floorplan is indicative only, conceptual in nature and subject to change without notice. Floorplan may depict features and/or other products which are not included in the house design, not included in the house price and/or not available from Coral Homes. All measurements are in millimetres unless otherwise stated. Floorplan measurements are approximate and are not to scale. Lot width is a guide only and may change due to developer covenants and Local Authority guidelines. For more information speak to your Coral Homes New Home Consultant. © Coral Homes Pty Ltd.

Boston – Newport Estate, Newport



Photography depicts items such as homewares, furniture, finishes, landscaping and fencing and may depict items that are upgraded or not supplied by Coral Homes. Speak with your New Home Consultant for more details.





# Boston Facades

12.5m+ Lot Width

Hamptons



Modern



Vantage



Vaucluse



Designer









# Monash Series

The Monash Series is a collection of spacious double-storey homes, designed specifically for the modern family. With floorplans available in varying sizes and layouts options, the Monash Series has multiple living spaces – perfect for large or multi-generational households.



Scan to view series

Monash – HomeWorld Warnervale, Warnervale

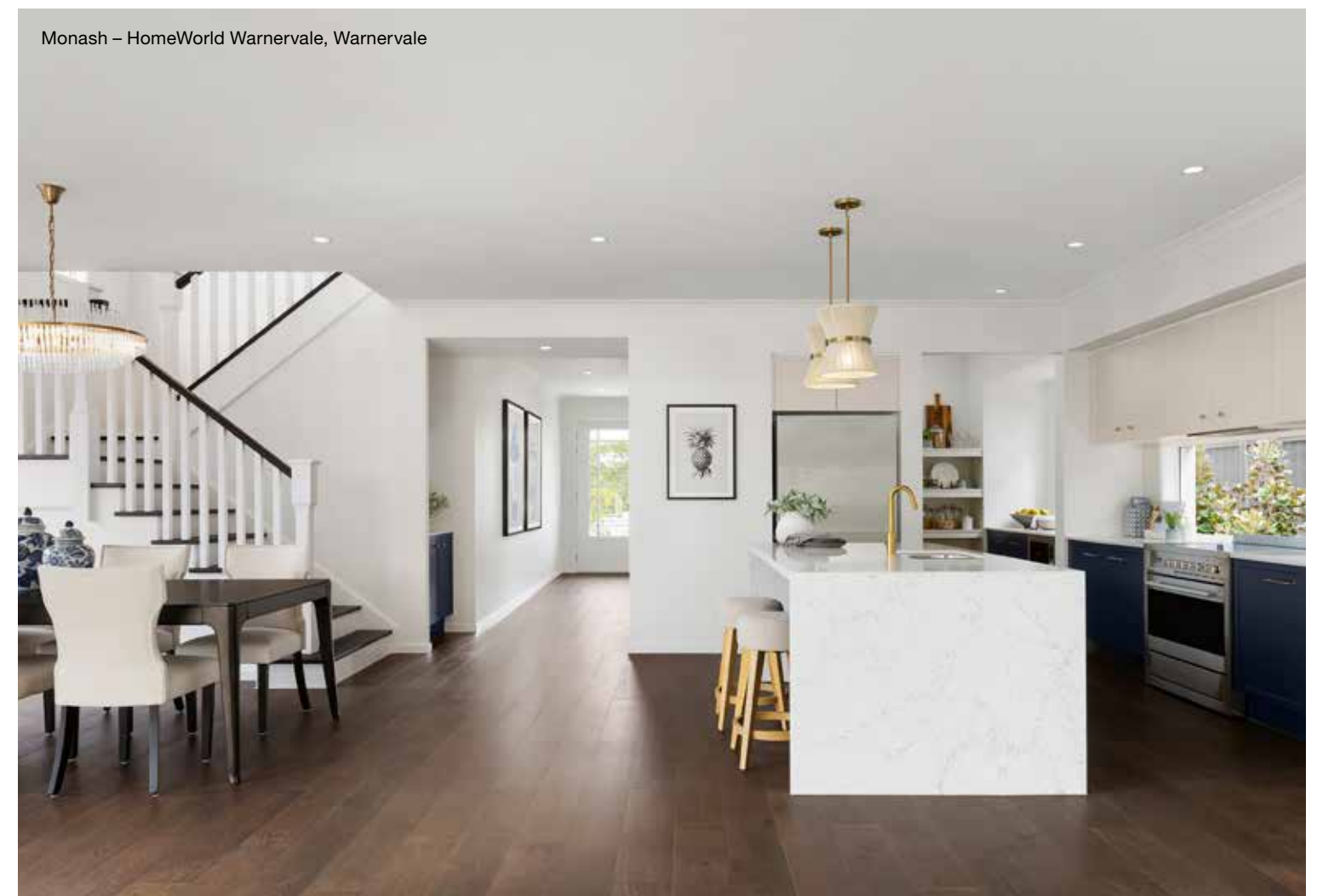


Monash (Hamptons Facade) – HomeWorld Warnervale, Warnervale



On  
display

Monash – HomeWorld Warnervale, Warnervale





# Monash 219N

5  | 2  | 3  | 1 

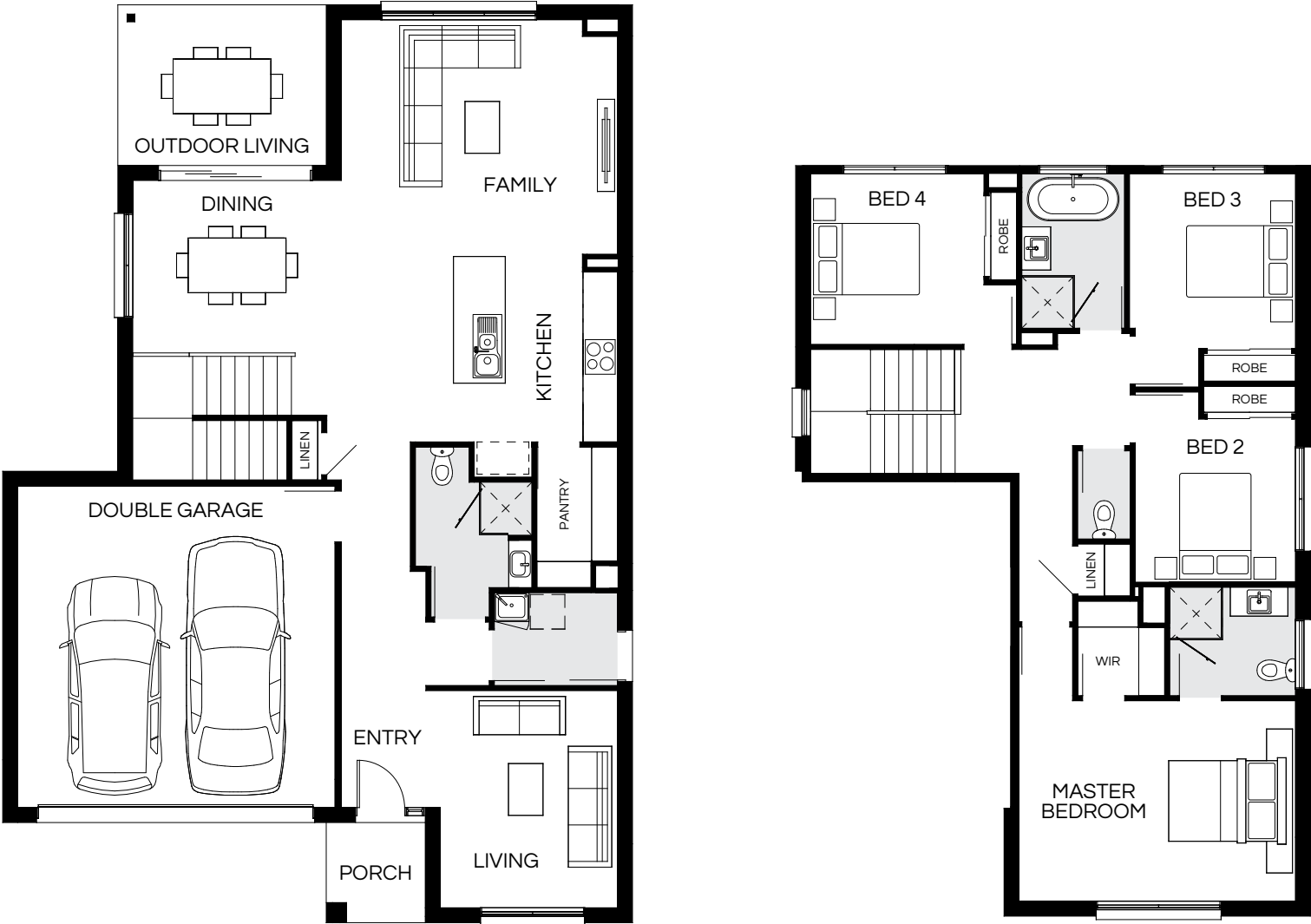


Master Bed	3620 x 3850	Dining	3190 x 4170	House Length	16.72m	Lower Area	124.94m²
Bed 2	3120 x 3150	Family	3650 x 4200	House Width	8.04m	Upper Area	94.84m²
Bed 3	3120 x 3150	Outdoor	3150 x 2740			House Area	219.78m² (23.66sq)
Bed 4	3020 x 3020					Lot width	10m+
Bed 5	3350 x 3000						

Floorplan and lot width based on Designer facade. Floorplan is indicative only, conceptual in nature and subject to change without notice. Floorplan may depict features and/or other products which are not included in the house design, not included in the house price and/or not available from Coral Homes. All measurements are in millimetres unless otherwise stated. Floorplan measurements are approximate and are not to scale. Lot width is a guide only and may change due to developer covenants and Local Authority guidelines. For more information speak to your Coral Homes New Home Consultant. © Coral Homes Pty Ltd.

# Monash 236N

4  | 2  | 3  | 2 



Master Bed	3500 x 4820	Dining	3050 x 3620	House Length	15.94m	Lower Area	148.40m²
Bed 2	2850 x 2800	Family	4120 x 4820	House Width	10.94m	Upper Area	87.75m²
Bed 3	3050 x 2900	Living	3790 x 3100			House Area	236.15m² (25.42sq)
Bed 4	2980 x 3030	Outdoor	2790 x 3620			Lot width	12.5m+

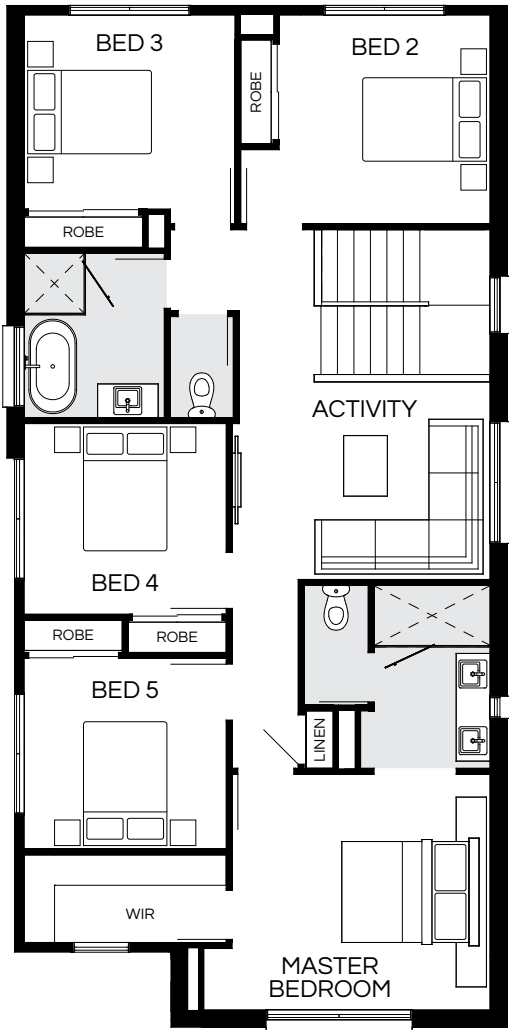
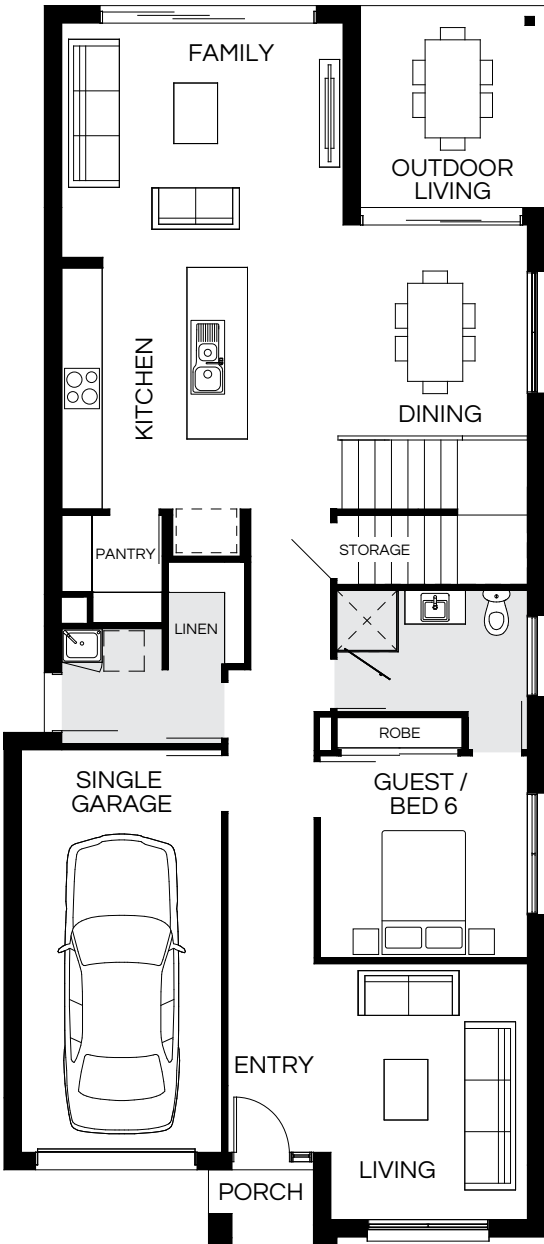
Floorplan and lot width based on Designer facade. Floorplan is indicative only, conceptual in nature and subject to change without notice. Floorplan may depict features and/or other products which are not included in the house design, not included in the house price and/or not available from Coral Homes. All measurements are in millimetres unless otherwise stated. Floorplan measurements are approximate and are not to scale. Lot width is a guide only and may change due to developer covenants and Local Authority guidelines. For more information speak to your Coral Homes New Home Consultant. © Coral Homes Pty Ltd.





# Monash 247N

6 | 3 | 3 | 1





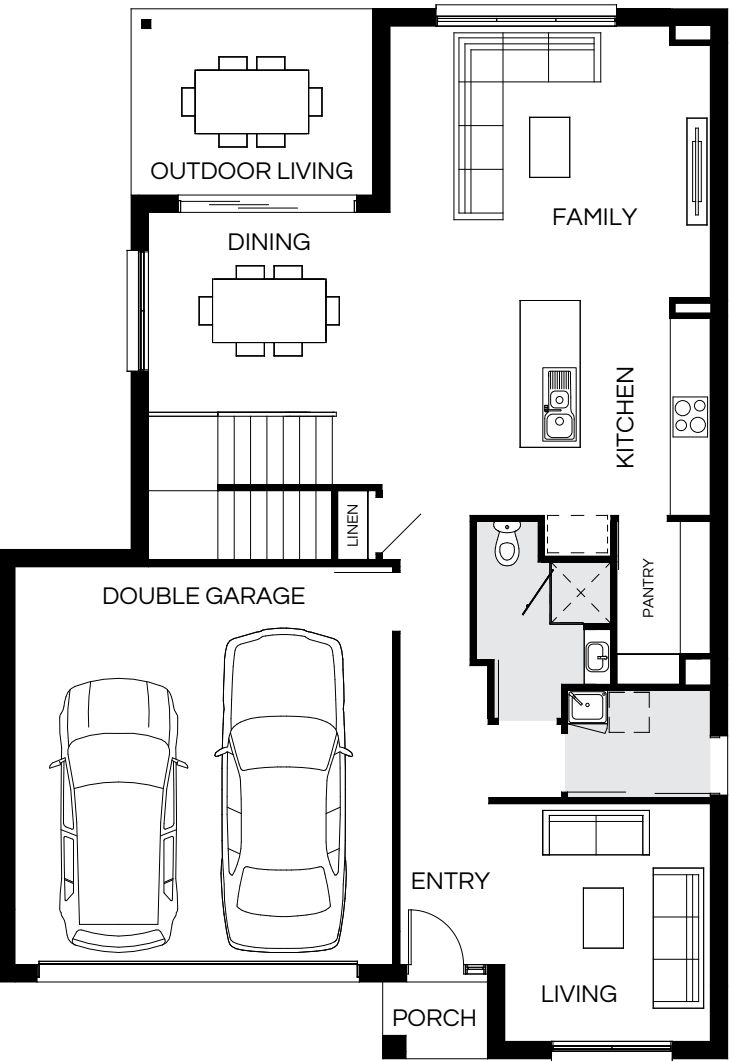
Master Bed	3520 x 3850	Guest	3020 x 3100	Outdoor	3000 x 2740	Lower Area	137.84m²
Bed 2	3120 x 3150	Activity	2955 x 3850	House Length	18.42m	Upper Area	109.45m²
Bed 3	2900 x 3150	Dining	3190 x 4170	House Width	8.04m	House Area	247.29m² (26.62sq)
Bed 4	2850 x 3020	Family	3500 x 4200			Lot width	10m+
Bed 5	2850 x 3020	Living	3820 x 2940				

Floorplan and lot width based on Designer facade. Floorplan is indicative only, conceptual in nature and subject to change without notice. Floorplan may depict features and/or other products which are not included in the house design, not included in the house price and/or not available from Coral Homes. All measurements are in millimetres unless otherwise stated. Floorplan measurements are approximate and are not to scale. Lot width is a guide only and may change due to developer covenants and Local Authority guidelines. For more information speak to your Coral Homes New Home Consultant. © Coral Homes Pty Ltd.



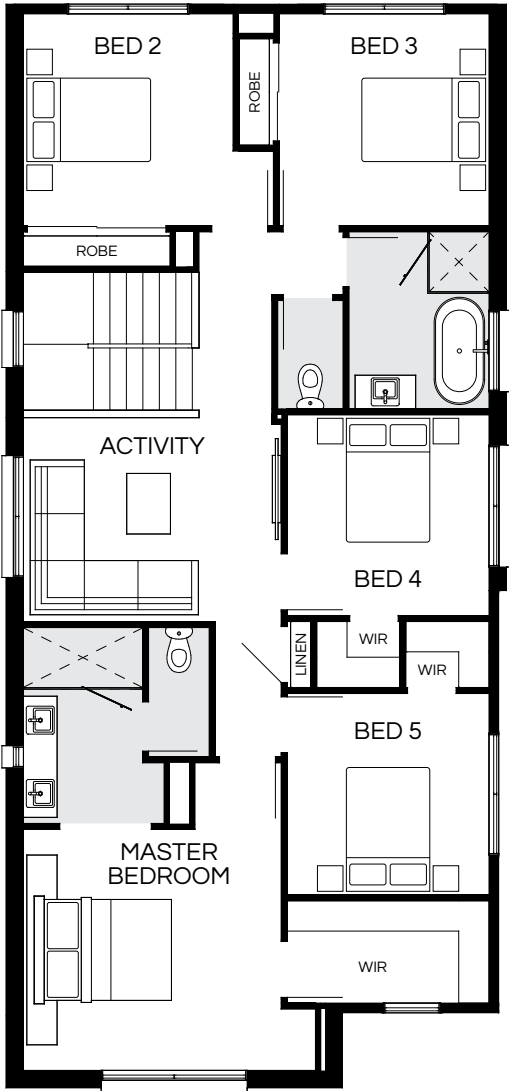
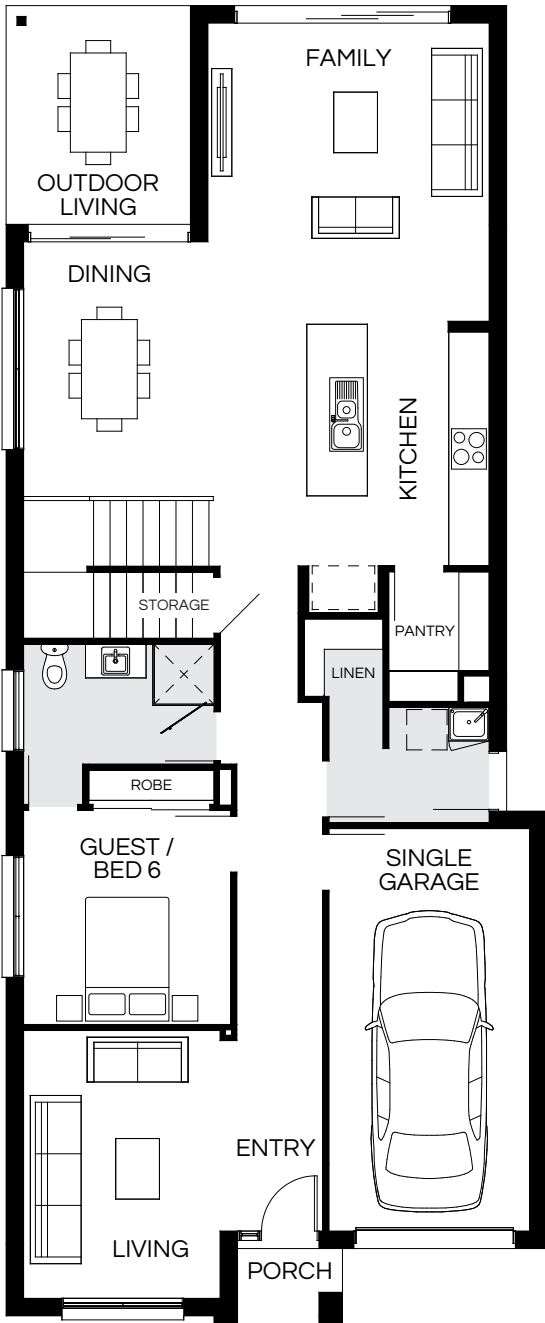
# Monash 260N

4  | 3  | 3  | 2 



# Monash 262N

6  | 3  | 3  | 1 



Design options available: Master to rear | Additional costs apply for design options.

Master Bed	3670 x 4670	Activity	2830 x 4090	Outdoor	2790 x 3620	Lower Area	149.25m <sup>2</sup>
Bed 2	3210 x 3260	Dining	3050 x 3620	House Length	15.73m	Upper Area	110.81m <sup>2</sup>
Bed 3	3380 x 3000	Family	4120 x 4820	House Width	10.94m	House Area	260.06m <sup>2</sup> (27.99sq)
Bed 4	2850 x 2880	Living	3580 x 3100			Lot width	12.5m <sup>+</sup>

Floorplan and lot width based on Designer facade. Floorplan is indicative only, conceptual in nature and subject to change without notice. Floorplan may depict features and/or other products which are not included in the house design, not included in the house price and/or not available from Coral Homes. All measurements are in millimetres unless otherwise stated. Floorplan measurements are approximate and are not to scale. Lot width is a guide only and may change due to developer covenants and Local Authority guidelines. For more information speak to your Coral Homes New Home Consultant. © Coral Homes Pty Ltd.

Master Bed	3600 x 3850	Guest	3200 x 3100	Outdoor	3250 x 2740	Lower Area	146.55m <sup>2</sup>
Bed 2	3170 x 3135	Activity	3050 x 3850	House Length	19.59m	Upper Area	116.29m <sup>2</sup>
Bed 3	3170 x 3135	Dining	3840 x 4220	House Width	8.04m	House Area	262.84m <sup>2</sup> (28.29sq)
Bed 4	3000 x 3020	Family	4450 x 4200			Lot width	10m <sup>+</sup>
Bed 5	3010 x 3020	Living	4000 x 2940				

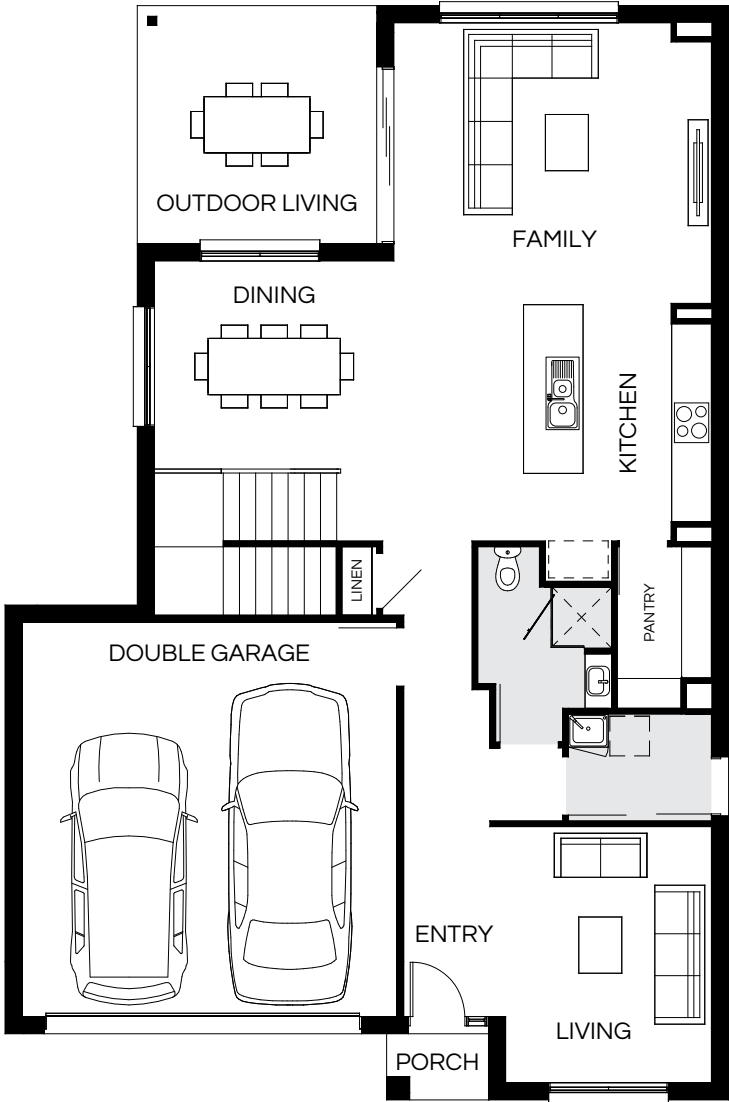
Floorplan and lot width based on Designer facade. Floorplan is indicative only, conceptual in nature and subject to change without notice. Floorplan may depict features and/or other products which are not included in the house design, not included in the house price and/or not available from Coral Homes. All measurements are in millimetres unless otherwise stated. Floorplan measurements are approximate and are not to scale. Lot width is a guide only and may change due to developer covenants and Local Authority guidelines. For more information speak to your Coral Homes New Home Consultant. © Coral Homes Pty Ltd.





# Monash 275N

4 | 3 | 3 | 2



Floorplan and lot width based on Designer facade. Floorplan is indicative only, conceptual in nature and subject to change without notice. Floorplan may depict features and/or other products which are not included in the house design, not included in the house price and/or not available from Coral Homes. All measurements are in millimetres unless otherwise stated. Floorplan measurements are approximate and are not to scale. Lot width is a guide only and may change due to developer covenants and Local Authority guidelines. For more information speak to your Coral Homes New Home Consultant. © Coral Homes Pty Ltd.

Design options available: Master to rear   Additional costs apply for design options.					
Master Bed	4000 x 4670	Activity	3580 x 4050	Outdoor	3600 x 3620
Bed 2	3440 x 3300	Dining	3200 x 3620	House Length	16.54m
Bed 3	3510 x 3000	Family	4270 x 4820	House Width	10.94m
Bed 4	3060 x 2850	Living	3890 x 3130		
				Lower Area	157.05m²
				Upper Area	118.48m²
				House Area	275.53m² (29.66sq)
				Lot width	12.5m+

Floorplan and lot width based on Designer facade. Floorplan is indicative only, conceptual in nature and subject to change without notice. Floorplan may depict features and/or other products which are not included in the house design, not included in the house price and/or not available from Coral Homes. All measurements are in millimetres unless otherwise stated. Floorplan measurements are approximate and are not to scale. Lot width is a guide only and may change due to developer covenants and Local Authority guidelines. For more information speak to your Coral Homes New Home Consultant. © Coral Homes Pty Ltd.



# Monash 281N

4  | 3  | 3  | 2 



Design options available: Master to rear   Additional costs apply for design options.							
Master Bed	3820 x 4890	Activity	3590 x 4050	Outdoor	3600 x 3620	Lower Area	160.10m²
Bed 2	3400 x 3300	Dining	3200 x 3620	House Length	16.8m	Upper Area	121.47m²
Bed 3	3550 x 3000	Family	4200 x 4820	House Width	11.16m	House Area	281.57m² (30.31sq)
Bed 4	3050 x 2880	Living	3800 x 3350			Lot width	12.5m+

Floorplan and lot width based on Designer facade. Floorplan is indicative only, conceptual in nature and subject to change without notice. Floorplan may depict features and/or other products which are not included in the house design, not included in the house price and/or not available from Coral Homes. All measurements are in millimetres unless otherwise stated. Floorplan measurements are approximate and are not to scale. Lot width is a guide only and may change due to developer covenants and Local Authority guidelines. For more information speak to your Coral Homes New Home Consultant. © Coral Homes Pty Ltd.

# Monash 282N

4  | 3  | 3  | 2 



Design options available: Master to rear   Additional costs apply for design options.							
Master Bed	5000 x 3795	Activity	3570 x 4350	Outdoor	3760 x 3590	Lower Area	160.53m²
Bed 2	3490 x 2900	Dining	3020 x 3590	House Length	16.32m	Upper Area	122.22m²
Bed 3	3370 x 2900	Family	4250 x 4750	House Width	11.88m	House Area	282.75m² (30.44sq)
Bed 4	3050 x 2900	Living	3820 x 3920			Lot width	13.5m+

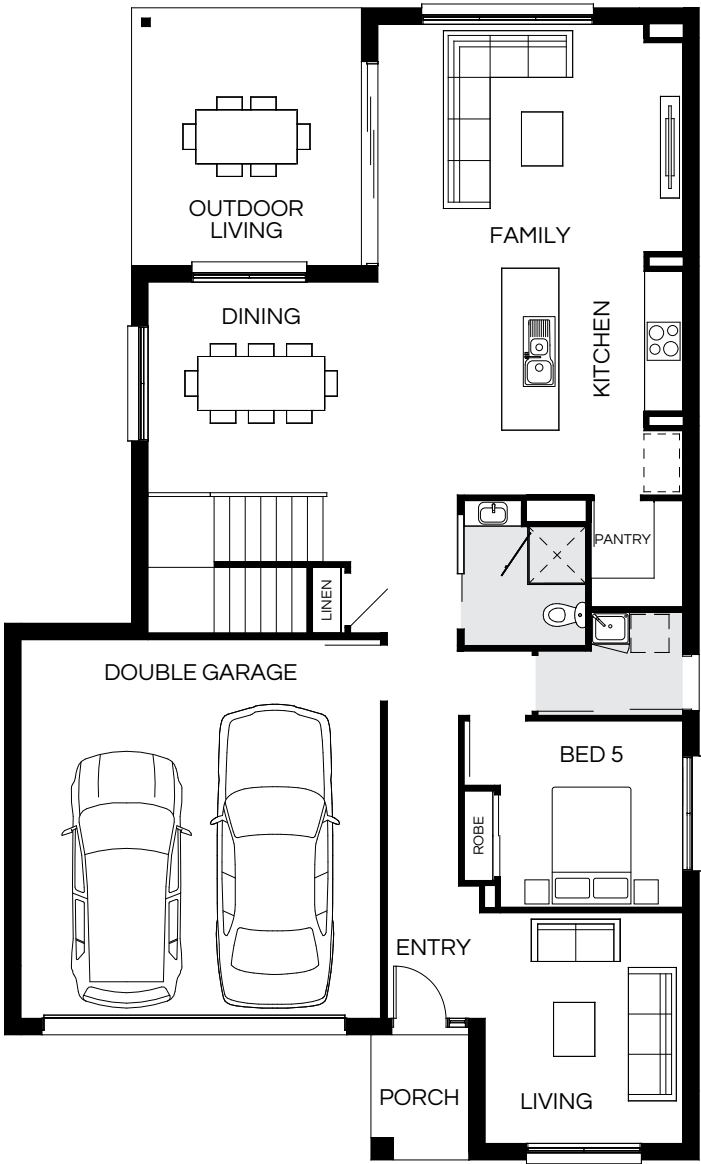
Floorplan and lot width based on Designer facade. Floorplan is indicative only, conceptual in nature and subject to change without notice. Floorplan may depict features and/or other products which are not included in the house design, not included in the house price and/or not available from Coral Homes. All measurements are in millimetres unless otherwise stated. Floorplan measurements are approximate and are not to scale. Lot width is a guide only and may change due to developer covenants and Local Authority guidelines. For more information speak to your Coral Homes New Home Consultant. © Coral Homes Pty Ltd.





# Monash 296N

5 | 3 | 3 | 2







Design options available: Master to rear   Additional costs apply for design options.							
Master Bed	3800 x 4670	Activity	3600 x 4050	House Length	18.14m	Lower Area	167.70m²
Bed 2	3480 x 3300	Dining	3370 x 3620	House Width	10.94m	Upper Area	129.05m²
Bed 3	3370 x 3000	Family	3850 x 4820			House Area	296.75m² (31.94sq)
Bed 4	3100 x 3450	Living	3650 x 3130			Lot width	12.5m+
Bed 5	2950 x 2890	Outdoor	4060 x 3620				

Floorplan and lot width based on Designer facade. Floorplan is indicative only, conceptual in nature and subject to change without notice. Floorplan may depict features and/or other products which are not included in the house design, not included in the house price and/or not available from Coral Homes. All measurements are in millimetres unless otherwise stated. Floorplan measurements are approximate and are not to scale. Lot width is a guide only and may change due to developer covenants and Local Authority guidelines. For more information speak to your Coral Homes New Home Consultant. © Coral Homes Pty Ltd.



# Monash 303N

5  | 4  | 2.5  | 2 







Design options available: Master to rear | 4 bedroom option | Additional costs apply for design options.

Master Bed	4000 x 3810	Activity	3790 x 4140	Outdoor	3680 x 3620	Lower Area	181.31m²
Bed 2	2900 x 3000	Dining	3170 x 3620	House Length	20.44m	Upper Area	121.89m²
Bed 3	2900 x 3220	Family	4110 x 4820	House Width	11.45m	House Area	303.20m² (32.64sq)
Bed 4	2900 x 3000	Living	4000 x 3700			Lot width	12.5m+
Bed 5	2900 x 2900	Media	3930 x 4820				

Floorplan and lot width based on Designer facade. Floorplan is indicative only, conceptual in nature and subject to change without notice. Floorplan may depict features and/or other products which are not included in the house design, not included in the house price and/or not available from Coral Homes. All measurements are in millimetres unless otherwise stated. Floorplan measurements are approximate and are not to scale. Lot width is a guide only and may change due to developer covenants and Local Authority guidelines. For more information speak to your Coral Homes New Home Consultant. © Coral Homes Pty Ltd.

# Monash 310N

4  | 4  | 2.5  | 2 



Design options available: Master to rear | Additional costs apply for design options.

Master Bed	3720 x 5420	Activity	3820 x 4050	Outdoor	3680 x 3620	Lower Area	186.36m²
Bed 2	3530 x 3300	Dining	3300 x 3620	House Length	20.94m	Upper Area	123.77m²
Bed 3	3150 x 3000	Family	4250 x 4820	House Width	11.69m	House Area	310.13m² (33.38sq)
Bed 4	3000 x 2850	Living	4050 x 3700			Lot width	13m+
		Media	4380 x 4820				

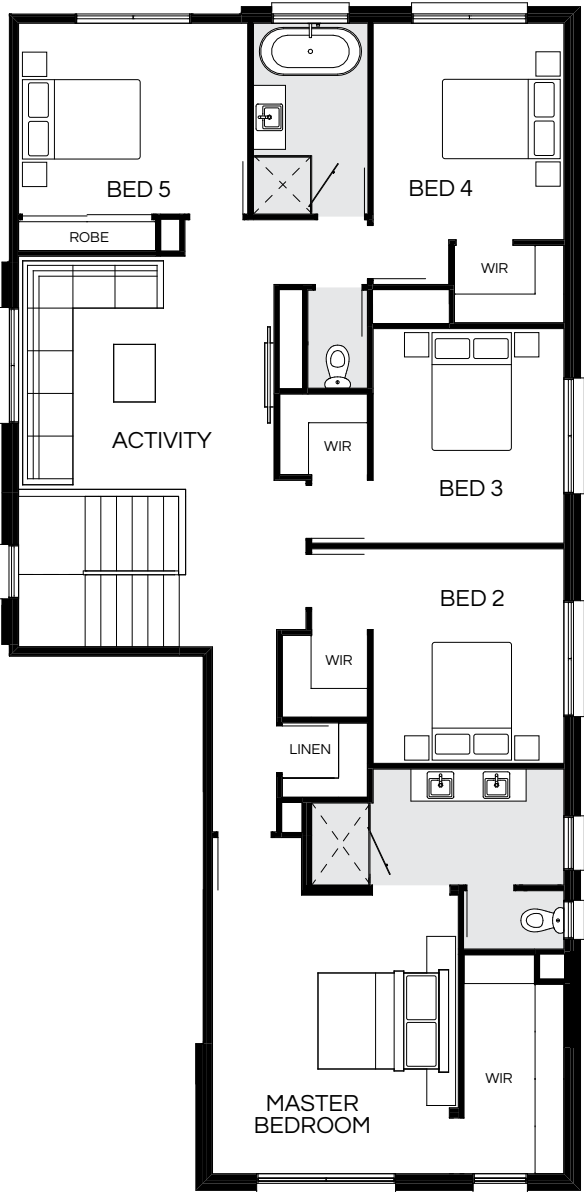
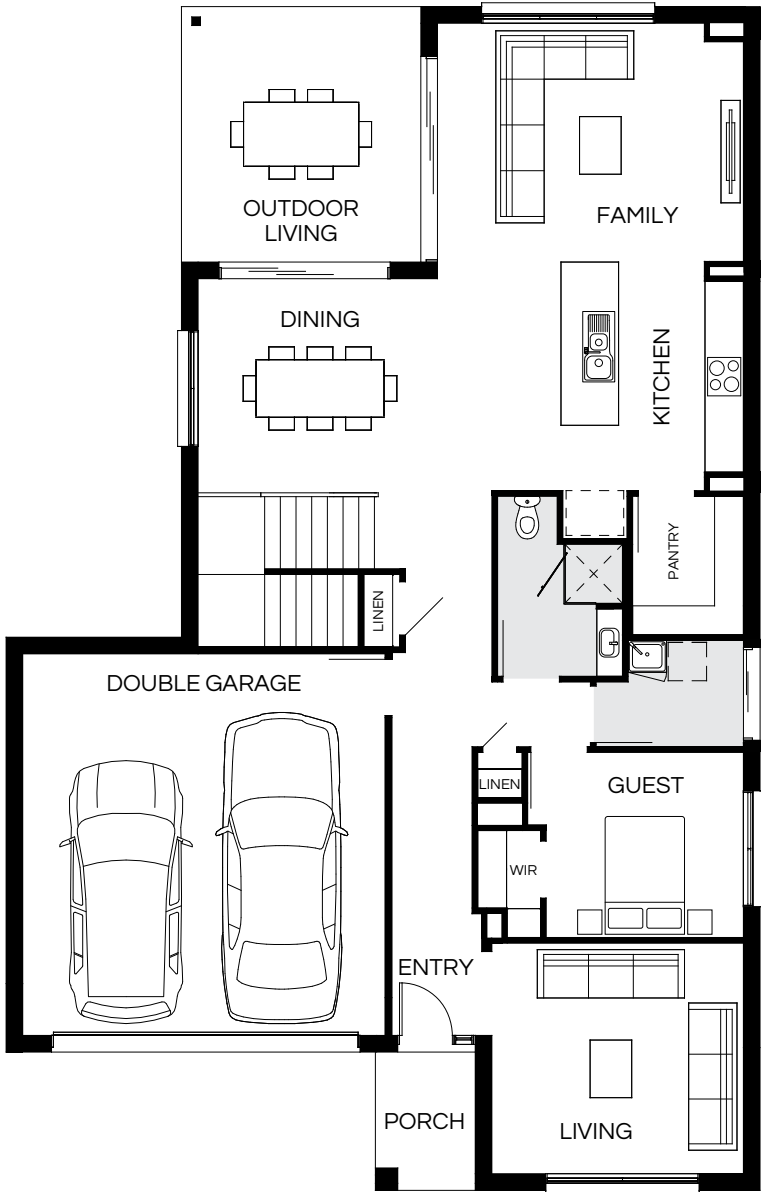
Floorplan and lot width based on Designer facade. Floorplan is indicative only, conceptual in nature and subject to change without notice. Floorplan may depict features and/or other products which are not included in the house design, not included in the house price and/or not available from Coral Homes. All measurements are in millimetres unless otherwise stated. Floorplan measurements are approximate and are not to scale. Lot width is a guide only and may change due to developer covenants and Local Authority guidelines. For more information speak to your Coral Homes New Home Consultant. © Coral Homes Pty Ltd.





# Monash 317N



6 | 3 | 3 | 2



Design options available: Master to rear with 5 bedrooms   Master to front with 5 bedrooms   Additional costs apply for design options.							
Master Bed	4370 x 3860	Guest	2910 x 3100	Outdoor	3990 x 3740	Lower Area	178.36m <sup>2</sup>
Bed 2	3370 x 3000	Activity	3660 x 4010	House Length	18.49m	Upper Area	139.52m <sup>2</sup>
Bed 3	3370 x 3000	Dining	3400 x 3740	House Width	11.78m	House Area	317.88m <sup>2</sup> (34.22sq)
Bed 4	3400 x 3000	Family	3740 x 4800			Lot width	13.5m <sup>+</sup>
Bed 5	3000 x 3600	Living	3620 x 3950				



# Monash 323N

5  | 3  | 3.5  | 2 



Design options available: Master to rear   Additional costs apply for design options.					
Master Bed	4790 x 4200	Activity	4020 x 4035	House Length	17.50m
Bed 2	3230 x 3240	Dining	3270 x 3395	House Width	12.06m
Bed 3	3230 x 3500	Family	4470 x 5790	Lower Area	180.99m²
Bed 4	3230 x 3400	Living	3670 x 3890	Upper Area	142.25m²
Bed 5	3000 x 3120	Outdoor	4140 x 3395	House Area	323.24m² (34.79sq)
				Lot width	13.5m+

Floorplan and lot width based on Designer facade. Floorplan is indicative only, conceptual in nature and subject to change without notice. Floorplan may depict features and/or other products which are not included in the house design, not included in the house price and/or not available from Coral Homes. All measurements are in millimetres unless otherwise stated. Floorplan measurements are approximate and are not to scale. Lot width is a guide only and may change due to developer covenants and Local Authority guidelines. For more information speak to your Coral Homes New Home Consultant. © Coral Homes Pty Ltd.

# Monash 336N

5  | 3  | 3.5  | 2 



Design options available: Master to rear   Additional costs apply for design options.					
Master Bed	4880 x 4200	Activity	4020 x 4035	House Length	18.22m
Bed 2	3480 x 3350	Dining	3270 x 3395	House Width	12.17m
Bed 3	3300 x 3610	Family	4570 x 5900	Lower Area	187.74m²
Bed 4	3300 x 3400	Living	3900 x 4160	Upper Area	149.01m²
Bed 5	3115 x 3230	Outdoor	4210 x 3395	House Area	336.75m² (36.25sq)
				Lot width	13.5m+

Floorplan and lot width based on Designer facade. Floorplan is indicative only, conceptual in nature and subject to change without notice. Floorplan may depict features and/or other products which are not included in the house design, not included in the house price and/or not available from Coral Homes. All measurements are in millimetres unless otherwise stated. Floorplan measurements are approximate and are not to scale. Lot width is a guide only and may change due to developer covenants and Local Authority guidelines. For more information speak to your Coral Homes New Home Consultant. © Coral Homes Pty Ltd.



# Monash Facades

12.5m+ Lot Width

Modern



Designer



Piermont



Hamptons Balcony



Vista



Vaucluse



Hamptons Display Facade





# Rochester Series

The Rochester Series has been designed to fit narrow lots of 10m+ widths, offering simple solutions to inner-city family living. These double storey home designs offer a range of flexible floorplans and facades to choose from. Each home design features a large, centrally located kitchen with an island bench and breakfast bar on the lower level.



Rochester (Vista Facade) – Newport Estate, Newport

On display



Rochester – Newport Estate, Newport



Rochester – Newport Estate, Newport



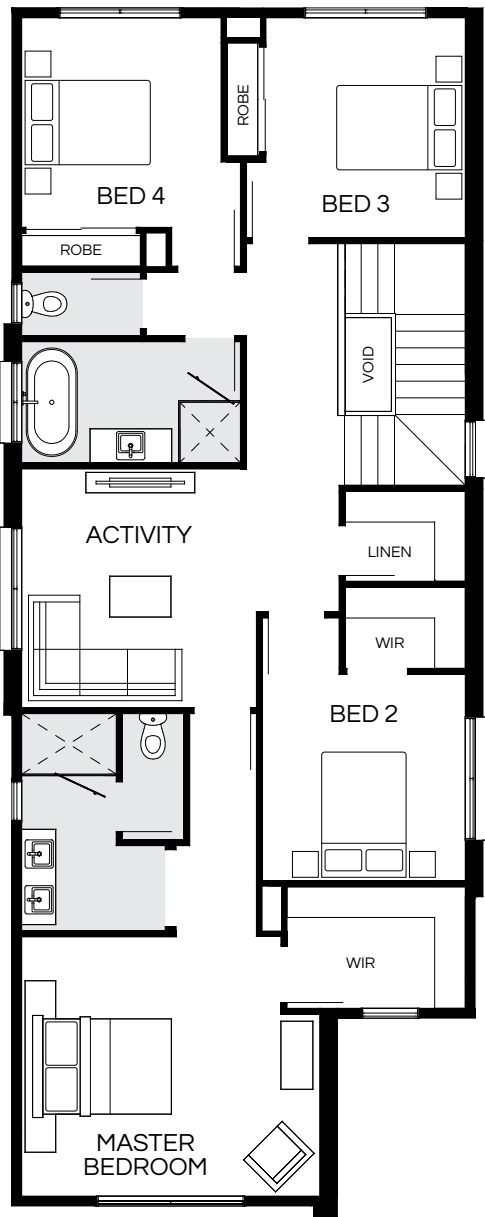
Photography depicts items such as homewares, furniture, finishes, landscaping and fencing and may depict items that are upgraded or not supplied by Coral Homes. Speak with your New Home Consultant for more details.

Photography depicts items such as homewares, furniture, finishes, landscaping and fencing and may depict items that are upgraded or not supplied by Coral Homes. Speak with your New Home Consultant for more details.



# Rochester 267N

5  | 2  | 3  | 2 

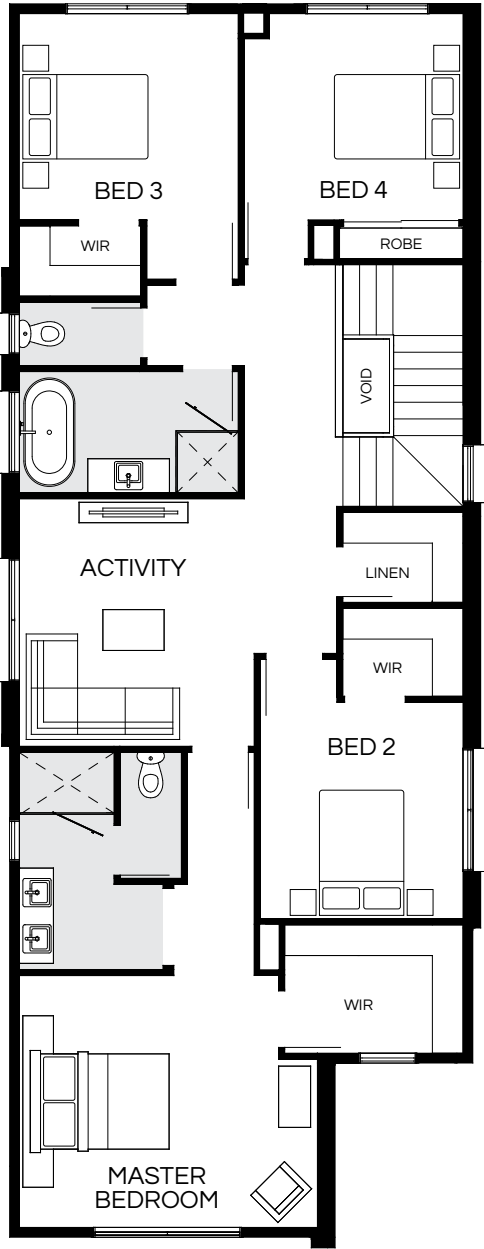
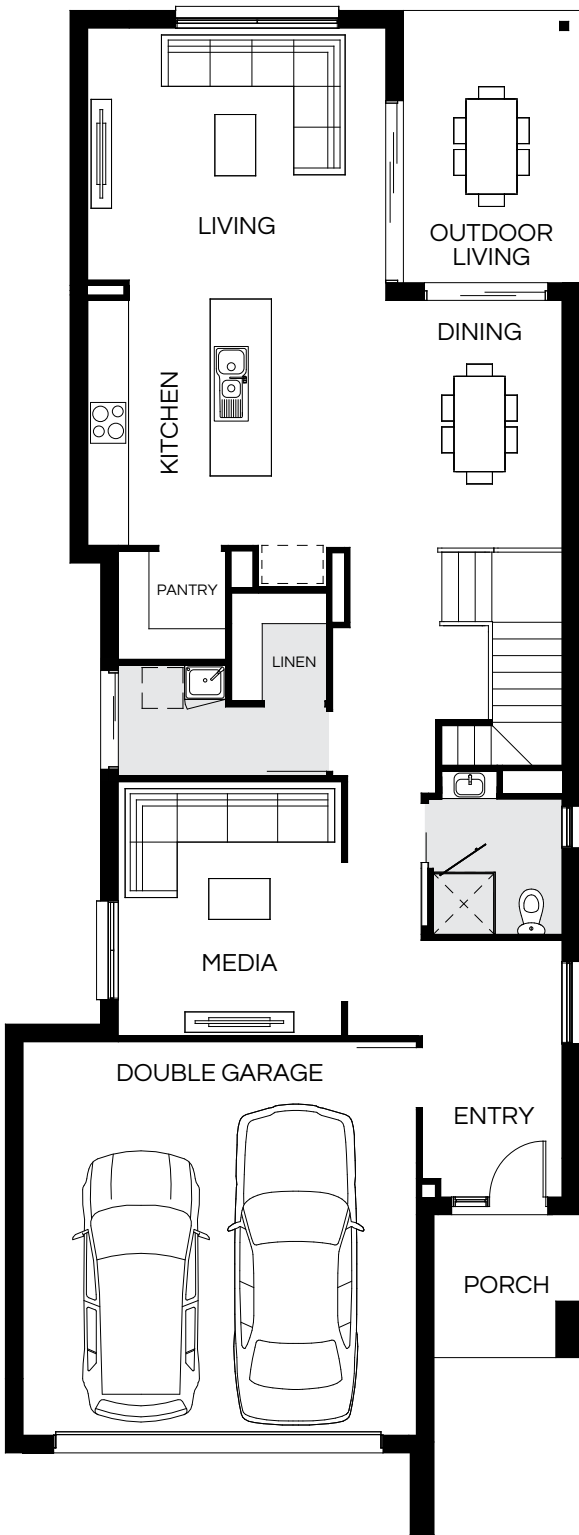


Master Bed	3830 x 4400	Guest	3000 x 3250	Outdoor	3600 x 2590	Lower Area	152.02m <sup>2</sup>
Bed 2	3050 x 3000	Activity	3525 x 3470	House Length	21.475m	Upper Area	115.57m <sup>2</sup>
Bed 3	3250 x 2950	Dining	3320 x 2590	House Width	8.44m	House Area	267.59m <sup>2</sup> (28.80sq)
Bed 4	3100 x 2950	Living	3600 x 4400			Lot width	10m <sup>+</sup>

Floorplan and lot width based on Designer facade. Floorplan is indicative only, conceptual in nature and subject to change without notice. Floorplan may depict features and/or other products which are not included in the house design, not included in the house price and/or not available from Coral Homes. All measurements are in millimetres unless otherwise stated. Floorplan measurements are approximate and are not to scale. Lot width is a guide only and may change due to developer covenants and Local Authority guidelines. For more information speak to your Coral Homes New Home Consultant. © Coral Homes Pty Ltd.

# Rochester 278N

4  | 3  | 3  | 2 



Master Bed	3720 x 4400	Activity	3655 x 3470	Outdoor	4000 x 2590	Lower Area	159.11m <sup>2</sup>
Bed 2	3200 x 3000	Dining	3690 x 2590	House Length	22.395m	Upper Area	119.67m <sup>2</sup>
Bed 3	3050 x 3235	Living	4000 x 4400	House Width	8.44m	House Area	278.78m <sup>2</sup> (30.01sq)
Bed 4	3050 x 3235	Media	3750 x 3300			Lot width	10m <sup>+</sup>

Floorplan and lot width based on Designer facade. Floorplan is indicative only, conceptual in nature and subject to change without notice. Floorplan may depict features and/or other products which are not included in the house design, not included in the house price and/or not available from Coral Homes. All measurements are in millimetres unless otherwise stated. Floorplan measurements are approximate and are not to scale. Lot width is a guide only and may change due to developer covenants and Local Authority guidelines. For more information speak to your Coral Homes New Home Consultant. © Coral Homes Pty Ltd.

Most popular





# Rochester Facades

10m+ Lot Width

Modern



Designer



Hamptons



East Hamptons



Vista Display Facade



Mornington









# Sacramento Series

Designed with families in mind, this stylish double storey series offers a variety of flexible floorplans and designer facades blending style with practicality. Customers are greeted with a statement staircase upon entry, flowing through to an open-plan kitchen that overlooks an inviting outdoor space. Upstairs, four bedrooms, including a master (located at the rear for privacy) with ensuite and spacious walk-in robe are complemented by a secondary living space.



Scan to view series

Sacramento – Springfield Rise, Spring Mountain



Photography depicts items such as homewares, furniture, finishes, landscaping and fencing and may depict items that are upgraded or not supplied by Coral Homes. Speak with your New Home Consultant for more details.

Sacramento (Modern Facade) – Springfield Rise, Spring Mountain



On  
display

Sacramento – Springfield Rise, Spring Mountain



Photography depicts items such as homewares, furniture, finishes, landscaping and fencing and may depict items that are upgraded or not supplied by Coral Homes. Speak with your New Home Consultant for more details.



# Sacramento 280N

4  | 3  | 3  | 2 

# Sacramento 303N

4  | 3  | 3.5  | 2 

Most  
popular



Master Bed	3620 x 4555	Activity	3860 x 5070	Outdoor	2900 x 5040	Lower Area	153.62m <sup>2</sup>
Bed 2	3000 x 3200	Dining	3055 x 2160	House Length	22.93m	Upper Area	126.65m <sup>2</sup>
Bed 3	3200 x 3330	Living	4065 x 4540	House Width	8.89m	House Area	280.27m <sup>2</sup> (30.17sq)
Bed 4	3000 x 3300	Media	3500 x 3740			<b>Lot width</b>	<b>10m+</b>

Floorplan and lot width based on Designer facade. Floorplan is indicative only, conceptual in nature and subject to change without notice. Floorplan may depict features and/or other products which are not included in the house design, not included in the house price and/or not available from Coral Homes. All measurements are in millimetres unless otherwise stated. Floorplan measurements are approximate and are not to scale. Lot width is a guide only and may change due to developer covenants and Local Authority guidelines. For more information speak to your Coral Homes New Home Consultant. © Coral Homes Pty Ltd.



Master Bed	3750 x 4555	Activity	4040 x 5020	Outdoor	2900 x 5800	Lower Area	163.86m <sup>2</sup>
Bed 2	3000 x 3200	Dining	4265 x 2950	House Length	23.45m	Upper Area	139.51m <sup>2</sup>
Bed 3	3220 x 4460	Living	4265 x 3750	House Width	8.89m	House Area	303.37m <sup>2</sup> (32.66sq)
Bed 4	3000 x 3300	Media	3650 x 3740			<b>Lot width</b>	<b>10m+</b>

Floorplan and lot width based on Designer facade. Floorplan is indicative only, conceptual in nature and subject to change without notice. Floorplan may depict features and/or other products which are not included in the house design, not included in the house price and/or not available from Coral Homes. All measurements are in millimetres unless otherwise stated. Floorplan measurements are approximate and are not to scale. Lot width is a guide only and may change due to developer covenants and Local Authority guidelines. For more information speak to your Coral Homes New Home Consultant. © Coral Homes Pty Ltd.





# Sacramento Facades

10m+ Lot Width

Modern (Coastal) Display Facade



Modern Display Facade



Hamptons



East Hamptons



Designer



East Hamptons









# Find Out More



## Website

Want to see more of our home designs?  
Visit our website **coralhomes.com.au**



## Virtual Village

Not enough time to visit our Estates?  
Take an online tour at **coralhomes.com.au/virtual-tours**



## Social

Connect with us! We update our social network with the  
best home inspiration, new releases, offers and more!

**CORAL**  
**HOMES**

© Coral Homes Pty Ltd. The copyright in the floorplans and facades depicted in this brochure are owned by or licensed to Coral Homes Pty Ltd and may not be reproduced, copied or dealt with in any manner which infringes the exclusive rights of Coral Homes Pty Ltd as prescribed by the Copyright Act 1968 without the express written authorisation of Coral Homes Pty Ltd. Coral Homes Pty Ltd QBCC 50792, NSW OFT 62084C, Coral Homes Qld Pty Ltd QBCC 1014053.



Photography depicts items such as homewares, furniture, finishes, landscaping and fencing and may depict items that are upgraded or not supplied by Coral Homes. Speak with your New Home Consultant for more details.



# Why Coral Homes?

Our foundation is built on transparency, trust and exceptional customer service. Having built over 26,000 homes across three decades, our customers receive a fixed price guarantee, independent quality checks and so much more.



## 34 Years Experience

Providing a high level of quality, value for money, security and transparency, is why we are one of Australia's largest home builders today.



## Fixed Price Guarantee

We understand the financial commitments around building a home and provide you with peace of mind by offering contracts with a Fixed Price Guarantee\* upfront.



## Independent Quality Inspections

We have a stringent seven step Quality Assurance process to ensure we build each and every home to a high quality. This process includes an independent quality inspection.



## Award-Winning Home Builder

We're a proud two-time winner of the HIA Professional Major Builder Award, the industry's most prestigious award. We are also honoured to be named ProductReview winners for customer satisfaction for 2021, 2022 & 2024.

# CORAL HOMES

[coralhomes.com.au](https://coralhomes.com.au)

\*The fixed price guarantee is in respect to the cost of construction of your house and associated site works in accordance with the specifications of your contract. Coral Homes reserves the right to vary, terminate or suspend the operation of the Fixed Price Guarantee offer in its absolute discretion, without notice.