

# CORAL HOMES

———— Classic Series ————

INCLUSION GUIDE



# CORAL HOMES

## Classic Series

Discover the Coral Homes Classic Series – a simplified, express start building process with no guesswork, just great choices!



### AFFORDABLE DESIGNS

Stylish and thoughtfully created home designs that won't break the budget. Perfect for first home buyers and investors looking for value without compromising on quality.



### EXPERT SELECTIONS

Our team of experts have handled the hard decisions for you by curating interior and exterior selections that balance modern trends and timeless appeal, making it easier than ever to create a home you'll love.



### STREAMLINE PROCESS

Experience a hassle-free building journey with a clear, efficient process designed to save you time. From consultation to completion, every step is simplified, so you can focus on the excitement of building your new home.



### MOVE IN SOONER

With fewer decisions and a fast-tracked timeline, the Classic Series allows you to move into your new home sooner, meaning you can start enjoying your space in record time.

All 'Classic Series' home designs, classic options, specification inclusions, and upgrade packs will be nominated by Coral Homes. Due to the continuing development of our product, Coral Homes reserves the right to alter product specifications and suppliers at any time and without notice. Geographic restrictions may apply to the availability of some Classic Inclusions. Photography may depict non-standard items such as Caesarstone® benchtops, cabinetry finishes, upgraded cabinetry, upgraded appliances, flooring, window treatments, bi-fold doors, stacker doors, ceiling heights, carpet, feature lighting, tapware, sinks, tiling, homewares, furniture, appliances, wallpaper, landscaping, fencing and other items which Coral Homes may not offer or are subject to an additional charge. Please speak with your Coral Homes New Home Consultant for more details or for full terms and conditions visit [coralhomes.com.au/terms-conditions](https://coralhomes.com.au/terms-conditions). Coral Homes Qld Pty Ltd QBCC 1014053. Coral Homes Pty Ltd QBCC 50792, NSW OFT 62084C





Photography depicts non-standard items including feature lighting, wallpaper, upgraded carpet and more which are not included in the price of homes with Classic Inclusions. Other items such as homewares and furniture are not supplied by Coral Homes.

# Build Your Dream Coral Home in 5 Simple Steps with our Classic Series



## 1. Choose your home design

Our talented team of interior designers and building experts have carefully packaged together a selection of stunning facades, thoughtfully pre-drawn floorplans, on trend colour selections and quality appliances to make your home build process quick, seamless and stress free. Simply choose what reflects your style from our concise, pre-set options, and we'll handle the rest.



## 2. Get a free quote instantly

Eager to get started? Provide us with your land details, and our friendly New Home Consultants will offer a free siting and fixed-price quote. Don't have land yet? We can help find the perfect house and land package just for you.



## 3. Secure a fixed price contract

For a small non-refundable \$1,500\* preliminary fee, we'll prepare a detailed fixed-price contract, including your colour and electrical selections, as well as soil tests and surveys for your new home, giving you complete transparency on costs.



## 4. Kickstart the process

Once you receive your fixed-price contract, we'll walk you through it – either online or in person at our Head Office. Simply sign and pay a reduced contract deposit<sup>#</sup>, and we'll finalise your house plans and lodge all the necessary building approvals.



## 5. Watch your new home come to life

After we receive all necessary approvals, finance authority from your lender, and the remaining deposit, construction of your Coral Home will begin! You'll make progress payments along the way but rest assured – your dedicated Coral Homes Customer Service Representative will guide you through the entire process.

*Move in and enjoy!*

\*Should 'as constructed' sewer and/or stormwater information not be available for your chosen block of land, an additional \$1,000 preliminary agreement fee payment will be required to obtain a Service Protection Report, providing the builder 'as constructed' information. <sup>#</sup>Reduced contract deposit amount is \$5,000 for Queensland and \$9,000 for New South Wales. For full terms and conditions see coralhomes.com.au/terms-conditions/



# Classic FLOORPLAN OPTIONS

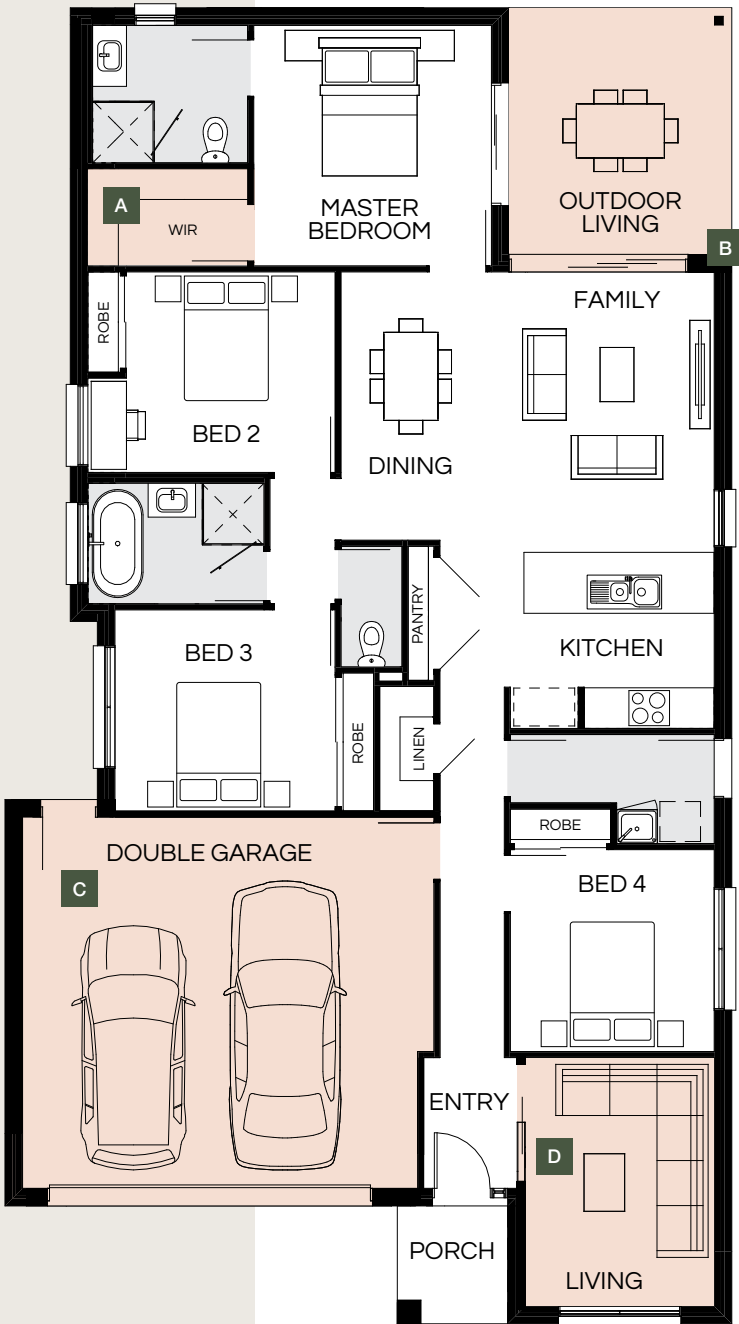
The Classic Series by Coral Homes offers a streamlined building experience with carefully pre-selected options. But for those looking to add a personal touch and elevate their home a little more, a selection of options are available.

These options consist of luxuries such as: raked ceilings in the family, dining, and kitchen areas that add an expansive touch to your home, indoor-outdoor connection with a grand alfresco space, corner stacker doors and elegant double-hinged doors to create a more open, seamless flow throughout your home + more!

Our floorplan options are design specific to enhance your home, providing flexibility and customisation to suit your lifestyle. Explore our website to confirm what's available for your selected home design.

**LINDEN OPTIONS\*:**

- A. Hinged door to Walk-in robe
- B. Stacker to outdoor living
- C. Extended garage with hinged door
- D. Sliding door to living



HOUSE & LAND  
PACKAGES UNDER  
**\$750K\***

# House & Land PACKAGES

The Coral Homes Classic Series House and Land packages offer an affordable pathway to home ownership, with all packages priced under \$750K.

Through strategic partnerships with leading developers, we provide access to sought-after locations, ensuring you're building in communities where people truly want to live. Our team conducts thorough research to offer competitive pricing, making the process of building your home both easy and budget friendly.

Plus, if you already own land, we can help you choose the perfect home design to suit your needs and lifestyle, ensuring a seamless and personalised experience from start to finish.



\*Floorplan shown is the Linden 184N. Floorplan is indicative only, conceptual in nature and subject to change without notice. Floorplan may depict features and/or other products which are not included in the house design, not included in the house price and/or not available from Coral Homes. All options depicted are design specific and may not be available on all Classic Series homes. For more information please see our website or speak with a Coral Homes New Home Consultant. © Coral Homes Pty Ltd.

Photography depicts non-standard items including driveway, paving, window treatment and more which are not included in the price of homes with Classic Inclusions. Other items such as homewares, furniture, landscaping and fencing are not supplied by Coral Homes.



# Classic EXTERIOR COLOUR SCHEMES

With a range of options, you can easily find the look that best suits your vision for your new home's external colours. Whether you're drawn to refined coastal tones, elegant neutrals, bold contrasts, or fresh, natural hues, our selections are designed to offer a cohesive and stylish look. No matter your preference, you can confidently choose a finish that enhances the character of your home, with minimal effort required.



TWILIGHT



MAGNOLIA



ALPINE



HORIZON



HARBOUR



# Classic INTERIOR COLOUR SCHEMES

Our internal colour schemes offer a range of stylish options that blend timeless design with modern aesthetics. Each option has been carefully curated to reflect different moods and preferences, ensuring that no matter which palette you choose, it will seamlessly complement the character of your new home.



OASIS



RUSTIC



URBAN



TIDE



OASIS



RUSTIC



URBAN



TIDE

Photography depicts non-standard items. Kitchen images depict both the Kitchen Upgrade and Kitchen Appliance Upgrade Packs with upgrades to Caesarstone® benchtops, tiling, overhead cabinetry, rangehood, overhead cupboards, waterfall-look island bench gable ends, 900mm appliances and more which are not included in the price of homes with Classic Inclusions. Upgrade Packs are available at an additional cost. Other items such as homewares, furniture, landscaping and refrigerator are not supplied by Coral Homes.





## Classic QUALITY FOUNDATIONS

### Pre-Construction

#### BUILDING INSURANCE

- ✓ QBCC (QLD) or OFT (NSW) building insurance fee as per legislation.

#### ENGINEERING

- ✓ Soil report and contour survey.
- ✓ Engineer's slab design.
- ✓ Allowance for building application fees (*region specific*).

#### SITE MANAGEMENT

- ✓ Temporary fencing (*site specific*).
- ✓ Earthworks up to 500mm of combined cut and fill to produce an even cut and fill.

#### CONNECTIONS

- ✓ Allowance made for connection to services of water, sewerage, stormwater and electricity (*site specific*).
- ✓ Surface water grates (*site specific*).
- ✓ Telephone provision (*site specific*).

### Structural

#### FRAME AND SLAB

- ✓ Steel frame and corrugated profile sheet metal roof with 60mm thick light duty anticon insulation blanket under entire roof area (*home specific*).
- ✓ Concrete engineer designed slab to suit 'S' class soil classification (*no allowances for piling or retaining walls – region specific*).

### Energy Efficiency\*

Enjoy peace of mind knowing that your home is not only stylish but also energy conscious with all homes meeting the 7-Star Home Energy Rating.

#### INSULATION

- ✓ Stay warm in winter and cool in summer with minimum R3.5 Insulation batts to required ceiling areas (*region specific*).
- ✓ Roof sarking and R2.0 Insulation batts to external walls (*design specific*).

#### OUTDOOR LIVING FAN

- ✓ Ceiling fan/light with speed controller and a blade rotation diameter of 1320mm to one (1) outdoor living (*home and region specific*).

#### WATER

- ✓ Minimum 3-Star WELS rating for shower heads and 4-star WELS rating for tapware and toilets.
- ✓ 205L (minimum) heat pump to single storey homes and 280L heat pump to double storey homes.



# Classic

## EXTERIOR INCLUSIONS

**FRONT ENTRY DOOR** A

Hume XN5 2040mm x 820mm clear glazed front entry door and rebated entry frame in paint finish.

**FRONT ENTRY DOOR HANDLE** B

Gainsborough double cylinder Satin Chrome 'Angular' Trilock entry set.

**EXTERNAL DOORS**

All external hinged timber doors will be fitted with a Gainsborough double cylinder deadlock and stainless steel 'Governor' knob (excluding front entry door) with locks keyed alike.

**AUTOMATIC GARAGE DOOR** C

Garage door to be a steel sectional garage door with textured finish, auto control and two (2) remotes and one (1) wall button for double garage (design specific).

**ROOFING, FASCIA & GUTTERS**

Steel roofing, fascia and gutters in available in a selection of contemporary colours from our Classic Series External Colour Schemes.

**ROOF PITCH**

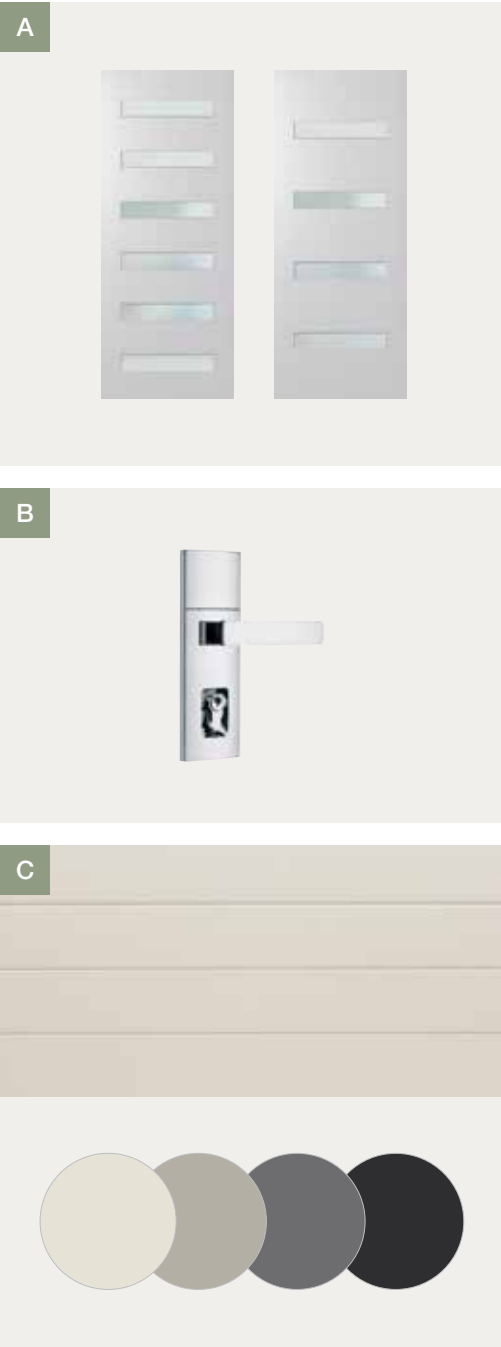
Added street appeal with a 25° roof pitch (home specific).

**ROOF EAVES**

450mm eaves (home specific).

**DOWNPIPES**

Round PVC painted downpipes.



Photography depicts non-standard items including driveway, paving, window treatment and more which are not included in the price of homes with Classic Inclusions. Other items such as homewares, furniture, landscaping and fencing are not supplied by Coral Homes.





## Classic KITCHEN INCLUSIONS



### KITCHEN BENCHTOPS

A spacious 900mm wide island benchtop featuring a 32mm laminate surface with a stylish square edge profile, available in a selection of contemporary colours from our Classic Internal Colour Schemes.

### TILED SPLASHBACK

Add a touch of style with a 700mm high splashback to the kitchen cooktop bench, featuring 250mm x 400mm tiles selected from the Classic Internal Colour Schemes (*home specific*).

### SINK MIXER **A**

The Phoenix Arlo gooseneck sink mixer in chrome adds a touch of sophistication to any kitchen.

### SINK **B**

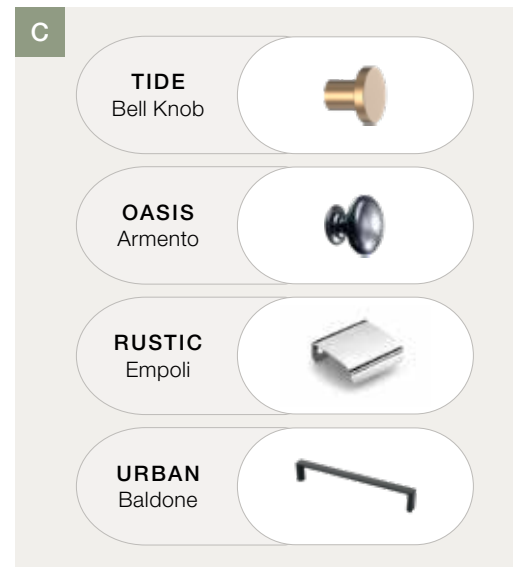
Clark Punch stainless steel 1.75 bowl inset sink, providing both style and practicality for your kitchen space.

### CABINETRY **C**

Laminate base cabinetry featuring one bank of four cutlery drawers and standard cabinet doors for the remaining sections; available in a range of colours from our Classic Internal Colour Schemes.

### HANDLES

Handles to drawers and doors beneath benches as selected from our Classic Internal Colour Schemes. (*design specific*).



### PROVISIONS

Provision for under bench microwave space with pot drawer and provision for dishwasher (*not fully-lined – design specific*).

### PANTRY SHELVES

Keep your pantry clutter-free with four 450mm deep white melamine shelves, providing ample storage space.

## Upgrades

### CAESARSTONE® BENCHTOPS

✓ 20mm Caesarstone® (Crystalline Silica-Free) with 20mm edge to kitchen benchtops in colours selected from the Classic Series Internal Colour Schemes.

### LAMINATED WATERFALL EDGES

✓ Up to two (2) 16mm thick x 900mm wide extended Laminated 'waterfall look' gable ends to kitchen Island bench with 16mm recessed shadowline to kitchen island bench.

### OVERHEAD CUPBOARDS & TILES

✓ Laminated overhead cupboards to full width of cooktop bench with 'handle less' push to open doors and 700mm stainless steel Technika concealed under-mount rangehood.

✓ Tiles upgraded to 100mm x 300mm laid in a horizontal stackbond pattern from the Classic Series Internal Colour Schemes.

✓ Laminated overhead cupboard, with two (2) doors above fridge space.

### SOFT CLOSE CUPBOARDS

✓ Soft close cupboard door hinges.



# Classic KITCHEN APPLIANCES

## TECHNIKA STAINLESS STEEL CANOPY RANGEHOOD

This canopy rangehood features aluminium mesh filters and four fan speeds for all your cooking needs.

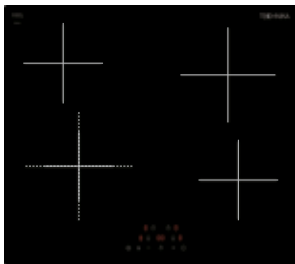
- Four Fan speeds
- Two Aluminium mesh filters
- Ducted operation



## TECHNIKA CERAMIC GLASS COOKTOP

Complete with four cooking zones and nine power settings, the CFM641-5 offers incredible cooking precision. Premium Schott ceramic glass makes this a sleek and stylish cooktop.

- Four Cooking zones
- Frameless bevelled edge
- Easy to use touch controls
- Premium Schott ceramic glass



## TECHNIKA STAINLESS STEEL OVEN

600mm stainless steel trim and easy-to-use knob controls are coupled with a large 62 litre capacity and five cooking functions for great cooking flexibility. Removable triple glazed doors and easy clean interior ensure cleaning is a breeze.

- 62L capacity
- Five functions
- Easy clean interior
- Removable triple glazed door



Technika Ceramic Glass Cooktop cooktop

Technika Stainless Steel Oven

Upgrades

**TECHNIKA FREESTANDING COOKER**

- ✓ 900mm wide stainless steel Technika T948SS-6 stainless steel electric under bench oven

**TECHNIKA FRAMELESS CERAMIC COOKTOP**

- ✓ 900mm wide frameless ceramic cooktop Technika 95HTSS-5 frameless black ceramic glass cooktop.

**TECHNIKA RANGEHOOD – PUSH BUTTON**

- ✓ 900mm stainless steel (push button) Technika CHEM52C9S-5 wall mounted canopy rangehood (ducted externally – if the Classic Kitchen Upgrades Pack is not selected)





✓  
Semi-frameless  
shower screen

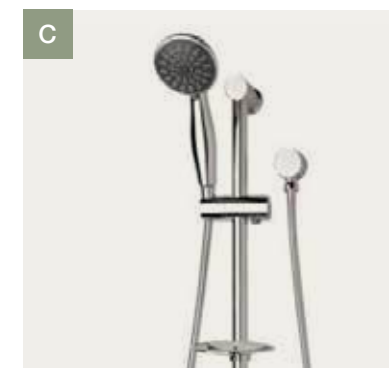
✓  
Caroma Carboni  
Seamless basin with  
Phoenix Arlo basin

✓  
Phoenix Arlo  
wall basin mixer

✓  
Caesarstone®  
benchtop with  
custom designed  
wall hung vanity

✓  
Freestanding bath

## Classic BATHROOM & ENSUITE INCLUSIONS



### BENCHTOP

32mm laminate benchtop with a sleek square edge profile, available in a range of contemporary colours from our Classic Internal Colour Schemes.

### FULL HEIGHT VANTIY

Custom-designed floor-mounted vanity cabinets with recessed kicks featuring laminate finish cupboard doors, available in a variety of colours from our Classic Internal Colour Schemes.

### VANITY HANDLES

Handles to doors beneath benches as selected from the Classic Internal Colour Schemes.

### MIRRORS

900mm high frameless polished edge mirrors to vanity units.

### BASIN & BASIN MOUNTED MIXER **A**

Caroma Luna inset basin with taphole and a sleek chrome pop-up waste, and Phoenix Arlo hob-mounted basin mixer (*chrome*).

### FREESTANDING BATH **B**

1600mm freestanding bath with overflow and chrome waste with plug.

### BATH MIXER

Phoenix Arlo bath wall mixer.

### RAIL SHOWER **C**

Posh Bristol single shower rail in chrome.

### SHOWER MIXER

Phoenix Arlo shower wall mixer.

### SHOWER SCREENS

Fully framed shower screens with silver frame colour and pivot action door.

### ACCESSORIES

Phoenix Radii round chrome toilet roll holders and 600mm double towel rail.

### TOILET SUITE

Posh Solus round close coupled toilet suite.

### TILING

Ceramic floor and wall tiling in a choice of tile colours from our Classic Internal Colour Schemes.

## Upgrades

### CAESARSTONE® BENCHTOP

- ✓ 20mm Caesarstone® (Crystalline Silica-Free) benchtop with 20mm edge in colours selected from the Classic Series Internal Colour Schemes.

### WALL HUNG VANITY

- ✓ Custom designed wall hung vanity.

### SHOWER SCREEN

- ✓ Semi-frameless shower screen.

### SOFT CLOSE CUPBOARDS

- ✓ Soft close cupboard door hinges.



# Classic POWDER ROOM INCLUSIONS

(Home specific)

## DROP FRONT VANITY

Laminated drop front vanity; colours as selected from the Classic Internal Colour Schemes.

## BASIN MIXER A

Phoenix Arlo hob-mounted basin mixer (chrome).

## BASIN B

Caroma Luna inset basin with taphole and chrome pop up waste.

## MIRROR

Frameless 900mm high, polished edge mirrors to full width of vanity.

## TOILET SUITE & ACCESSORIES

Posh Solus round close coupled toilet suite and Phoenix Radii round chrome toilet roll holder.

## TILING

Ceramic wall and floor tiling to powder room as selected from the Classic Internal Colour Schemes.



# Classic LAUNDRY INCLUSIONS

## CABINET, TUB & MIXER

Base laundry cabinet with 45 litre stainless steel tub and chrome mixer tap.

## DOORS

820mm x 2040mm painted clear half glass door or a clear glass sliding door (home specific).

## TILING

Ceramic tiling to floor with 150mm skirting tile (nominal) and 300mm high to splashback as selected from the Classic Internal Colour Schemes (design specific).



## Upgrades

### LAUNDRY CUPBOARD

- ✔ Provide a post formed laminated bench top with 760mm long x 600mm deep cupboards under with a 45 litre stainless steel single bowl drop-in tub to the laundry.

### SOFT CLOSE CUPBOARDS

- ✔ Soft close cupboard door hinges.

# Classic INTERIOR INCLUSIONS

## CEILING HEIGHT

2400mm high ceilings to single storey and double storey homes.

## CORNICE

Classic 90mm cove stylecornices are provided standard throughout home.

## SKIRTINGS

Skirtings and architraves to be single bevel profile (excluding laundry / bathroom / ensuites / powder rooms).

## STAIRS

Staircase with timber handrail and carpet grade treads and risers (double storey homes).

## LINEN CUPBOARDS A

Generous linen with four melamine shelves for increased storage.

2100mm high framed vinyl sliding door or 2040mm hinged door to linen cupboards (home specific).

## BROOM CUPBOARDS

Melamine shelf to broom cupboards with 2040mm high hinged door with chrome dummy lever door handle (home specific).

## ROBES

Melamine shelf with chrome hanging rail to robes with 2100mm high framed vinyl sliding doors or 2040mm hinged doors (home specific).

## WALK-IN ROBES

Melamine shelf with chrome hanging rail (home specific).

## WINDOWS

Powder coated aluminium windows with keyed locks.



## PAINT

Professional 3-coat paint system to internal walls with 2-coat paint system to ceilings and cornice.

3-coat gloss aquanamel paint to interior mouldings and doors.

Providing premium 'Aquanamel' paint with non- yellowing protection to everyday surfaces.

## SLIDING & STACKER DOORS B

Powder coated aluminium sliding and stacker doors (home specific).

## WEATHER SEALS

Keep the draft out with weather seals to all aluminium windows and draft seals to external hinged doors including front entry door (excluding sectional garage door).

## FLUSH PANEL DOORS C

2040mm Flush Panel internal doors.

## DOOR HANDLES C

Gainsborough 'G4 Series' satin chrome Liana lever door handles.

Privacy locks included to ensuites, bathrooms and toilet doors.



# Classic ELECTRICAL INCLUSIONS

## POWER POINTS A

Clipsal Iconic range vivid white power outlets and switches.

## LIGHTING B

Downlights to main living area (*home specific*).

## CEILING FAN LIGHTS C

One Beacon Aria 132cm white ceiling fan/light with a speed controller to each bedroom and fan and/or fan/light to selected living areas (*design specific*).

## TV POINTS D

One TV point for single storey homes and two TV points for double storey homes.

## BATTEN HOLDER E

Lighting batten holder.

## SMOKE DETECTORS

Smoke detectors where required.

## EXHAUST FANS

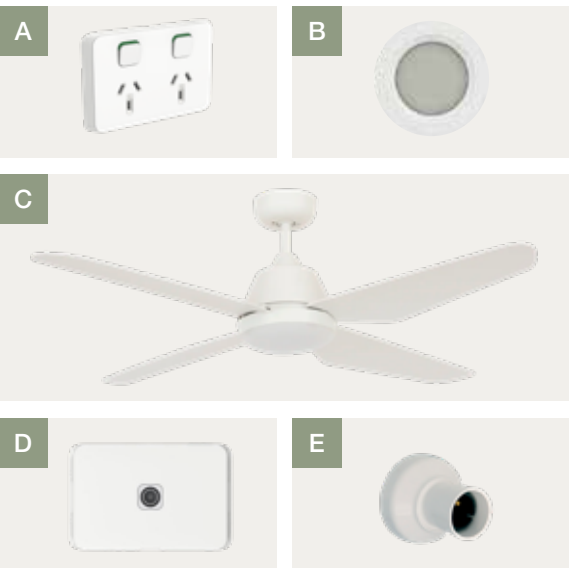
Exhaust fans where required (*home specific*).

## EARTH LEAKAGE

Earth leakage circuit breakers.

## PHONE SOCKET

CAT3.



# Upgrades

## EXTERIOR WALL LIGHTS

### ALPINE

- ✓ MFL By Masson Tanimi Cylinder LED Up/Down Exterior Wall Light in Black

### HARBOUR

- ✓ Yamba 1 Light Wall Bracket in White with Frosted Glass Diffuser

### HORIZON

- ✓ Eden 1 Light Wall Bracket in White

### MAGNOLIA

- ✓ Broadbeach 1 Light Wall Bracket in Black

### TWILIGHT

- ✓ Flinders 2 Light Square Up/Down Exterior Wall Sconce in Black



## INTERIOR PENDANTS

### OASIS

- ✓ Camilla 1 Light Pendant in Black with Ribbed Opal Glass

### RUSTIC

- ✓ Form 1 Light Pendant in White with Frosted Opal Glass

### TIDE

- ✓ Camilla 1 Light Pendant in Brass with Ribbed Opal Glass

### UBAN

- ✓ Form 1 Light Pendant in Black with Smoke Glass



## POWER POINTS

2-Way Light Switch.  
Weatherproof Single GPO.

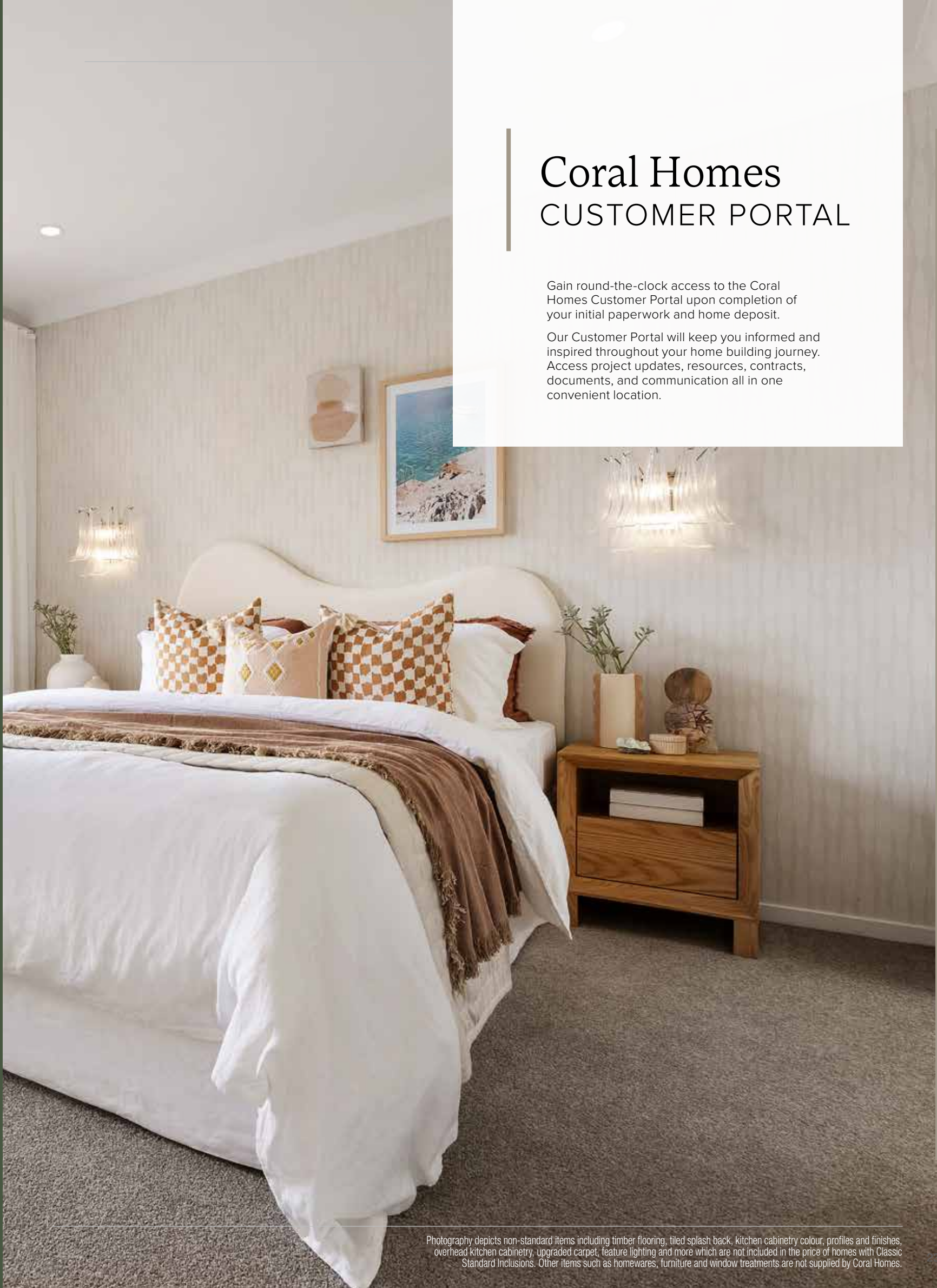
## EXHAUST FAN

Airflow Exhaust Fan (*ducting through eaves or brickwork*)

# Coral Homes CUSTOMER PORTAL

Gain round-the-clock access to the Coral Homes Customer Portal upon completion of your initial paperwork and home deposit.

Our Customer Portal will keep you informed and inspired throughout your home building journey. Access project updates, resources, contracts, documents, and communication all in one convenient location.



Photography depicts non-standard items including timber flooring, tiled splash back, kitchen cabinetry colour, profiles and finishes, overhead kitchen cabinetry, upgraded carpet, feature lighting and more which are not included in the price of homes with Classic Standard Inclusions. Other items such as homewares, furniture and window treatments are not supplied by Coral Homes.



# Classic INCLUSIONS



## Kitchen

- ✓ 900mm wide island benchtop featuring a 32mm laminate surface with a square edge profile
- ✓ 700mm high splashback to the kitchen cooktop bench with 250mm x 400mm tiles
- ✓ Phoenix Arlo sink mixer with Clark Punch stainless steel 1.75 bowl inset sink
- ✓ The Phoenix Arlo gooseneck sink mixer in chrome
- ✓ Clark Punch stainless steel 1.75 bowl inset sink
- ✓ Laminate base cabinetry featuring one bank of four cutlery drawers and standard cabinet doors for the remaining sections
- ✓ Handles to drawers and doors beneath benches from our Classic Internal Colour Schemes
- ✓ Provision for under bench microwave space with pot drawer and provision for dishwasher (*not fully-lined – design specific*)
- ✓ 2040mm hinged flush panel door (*home specific*)
- ✓ Four 450mm white melamine shelves
- ✓ Technika 600mm stainless steel canopy rangehood
- ✓ Technika 600mm stainless steel oven
- ✓ Technika 600mm ceramic glass cooktop

## Bathroom & Ensuite

- ✓ 32mm laminate benchtop with a square edge profile
- ✓ Custom-designed floor-mounted vanity cabinets with recessed kicks featuring laminate finish cupboard doors
- ✓ Handles from to drawers and doors beneath benches from our Classic Internal Colour Schemes
- ✓ 900mm high frameless polished edge mirrors to vanity units
- ✓ Caroma Luna inset basin with taphole and a sleek chrome pop-up waste, and Phoenix Arlo hob-mounted basin mixer (*chrome*)
- ✓ Freestanding bath with overflow and chrome waste with plug
- ✓ Phoenix Arlo bath wall mixer
- ✓ Posh Bristol single shower rail in chrome
- ✓ Phoenix Arlo shower wall mixer
- ✓ Fully framed shower screens with silver frame colour and pivot action door
- ✓ Phoenix Radii round chrome toilet roll holders and 600mm double towel rail
- ✓ Posh Solus round close coupled toilet suite
- ✓ Ceramic floor tiling with 150mm high skirting tile (*nominal*), vanity splashback and 2100mm high shower from our Classic Internal Colour Schemes.

## Powder Room

- ✓ Laminated top with drop front vanity
- ✓ Phoenix Arlo hob-mounted basin mixer (*chrome*)
- ✓ Caroma Luna inset basin with taphole and chrome pop up waste
- ✓ Frameless 900mm high, polished edge mirrors to full width of vanity
- ✓ Posh Solus round close coupled toilet suite and Phoenix Radii round chrome toilet roll holder

## Laundry

- ✓ Base laundry cabinet with 45 litre stainless steel tub and chrome mixer tap.
- ✓ 820mm x 2040mm painted clear half glass door with double cylinder deadlock or a clear glass sliding door (*home specific*)
- ✓ Ceramic tiling to floor with 150mm skirting tile (*nominal*) and 300mm high to laundry cabinet splashback from our Classic Internal Colour Schemes.

## Internal

- ✓ 2400mm high ceilings to single storey and double storey homes
- ✓ Classic 90mm cove stylecornices are provided standard throughout home
- ✓ Skirtings and architraves to be single bevel profile (*excluding laundry / bathroom / ensuites / powder rooms*)
- ✓ Staircase with timber handrail and carpet grade treads and risers (*double storey homes*)
- ✓ Four melamine shelves for increased storage. 2100mm high framed vinyl sliding door or 2040mm hinged door to linen cupboards (*home specific*)
- ✓ Melamine shelf to broom cupboards with 2040mm high hinged door with chrome dummy lever door handle (*home specific*)
- ✓ Melamine shelf to walk-in robes with chrome hanging rail (*home specific*)
- ✓ Powder coated aluminium windows with keyed locks
- ✓ Professional 3-coat paint system to internal walls with 2-coat paint system to ceilings and cornice
- ✓ 3-coat gloss aquanamel paint to interior mouldings and doors
- ✓ Providing premium 'Aquanamel' paint with non-yellowing protection to everyday surfaces

- ✓ Powder coated aluminium sliding and stacker doors (*home specific*)
- ✓ Weather seals to all aluminium windows and draft seals to external hinged doors including front entry door (*excluding sectional garage door*)
- ✓ 2040mm Flush Panel internal doors
- ✓ Gainsborough 'G4 Series' satin chrome Liana lever door handles
- ✓ Privacy locks included to ensuites, bathrooms and toilet doors

## External

- ✓ Hume XN5 2040mm x 820mm clear glazed front entry door and rebated entry frame in paint finish
- ✓ Gainsborough double cylinder Satin Chrome 'Angular' Trilock entry set
- ✓ All external hinged timber doors will be fitted with a Gainsborough double cylinder deadlock and stainless steel 'Governor" knob (*excluding front entry door*) with locks keyed alike.
- ✓ Garage door to be a steel sectional garage door with textured finish, auto control and two (2) remotes and one (1) wall button for double garage (*design specific*)
- ✓ Steel roofing, fascia and gutters

- ✓ Added street appeal with a 25° roof pitch (*home specific*) and 450mm eaves (*home specific*)
- ✓ Round PVC painted downpipes
- ✓ 2400mm x 1500mm wall mounted powder coated clothesline with 12 lines (*region specific*)
- ✓ 3000L round steel rainwater tank (*region specific*)

## Electrical

- ✓ One Beacon Aria 132cm white ceiling fan/light with a speed controller to each bedroom and fan and/or fan/light to selected living areas(*design specific*)
- ✓ One TV point for single storey homes and two TV points for double storey homes
- ✓ Downlights to main living area (*home specific*)
- ✓ Smoke detectors where required
- ✓ Exhaust fans where required (*home specific*)
- ✓ Earth leakage circuit breakers



# Why Coral Homes?

Our foundation is built on transparency, trust and exceptional customer service. Having built over 27,000 homes across three decades, our customers receive a fixed price guarantee, independent quality checks and so much more.



## 35+ Years Experience

Providing a high level of quality, value for money, security and transparency, is why we are one of Australia's largest home builders today.



## Fixed Price Guarantee

We understand the financial commitments around building a home and provide you with peace of mind by offering contracts with a Fixed Price Guarantee\* upfront.



## Independent Quality Inspections

We have a stringent seven step Quality Assurance process to ensure we build each and every home to a high quality. This process includes an independent quality inspection.



## Award-Winning Home Builder

We're a proud two-time winner of the HIA Professional Major Builder Award, the industry's most prestigious award. We are also honoured to be named ProductReview winners for customer satisfaction for 2021, 2022 & 2024.

# CORAL HOMES

[coralhomes.com.au](https://coralhomes.com.au)

\*The fixed price guarantee is in respect to the cost of construction of your house and associated site works in accordance with the specifications of your contract. Coral Homes reserves the right to vary, terminate or suspend the operation of the Fixed Price Guarantee offer in its absolute discretion, without notice. The copyright in the floorplans and facades depicted in this brochure are owned by or licensed to Coral Homes Pty Ltd and may not be reproduced, copied or dealt with in any manner which infringes the exclusive rights of Coral Homes Pty Ltd as prescribed by the Copyright Act 1968 without the express written authorisation of Coral Homes Qld Pty Ltd QBCC 1014053. Coral Homes Pty Ltd QBCC 50792, NSW OFT 62084C.