




NSW Acreage  
*Collection*

CORAL  
HOMES



# Contents

|  |   |    |
|--|---|----|
| <b>Highlands Series</b>                |   | 7  |
| Highlands 256N                         |   | 8  |
| Highlands 280N                         |   | 11 |
| Highlands 307N                         |   | 12 |
| Highlands 340N                         |   | 15 |
| Highlands 386N                         |   | 16 |
| Highlands Facades                      |   | 18 |
| <b>Crestview Series</b>                |  | 21 |
| Crestview 272N                         |   | 22 |
| Crestview 309N                         |   | 25 |
| Crestview 338N                         |   | 26 |
| Crestview 378N                         |   | 29 |
| Crestview Facades                      |   | 30 |
| <b>Brookfield Series</b>               |   | 33 |
| Brookfield Series                      |   | 33 |
| Brookfield 265N                        |   | 34 |
| Brookfield 284N                        |   | 37 |
| Brookfield 300N                        |   | 38 |
| Brookfield 330N                        |   | 41 |
| Brookfield Facades                     |   | 42 |
| <b>Winton Series</b>                   |   | 45 |
| Winton 222N                            |   | 46 |
| Winton 255N                            |   | 49 |
| Winton Facades                         |   | 50 |
| Durable steel frames and sheet roofing |   | 52 |

Photography from Highlands at Everleigh Estate, Greenbank depicts non-standard items including upgraded porcelain tiling, built-in cabinetry, feature stone and fireplace, upgraded windows, bi-fold doors and handles, feature lighting, raked and square set ceiling, ceiling height and other items which Coral Homes may not offer or are subject to additional charge. Items such as homewares, furniture, landscaping and fencing are not supplied by Coral Homes. Speak with your New Home Consultant for more details.

Photography throughout this guide depicts fixtures, finishes and features such as certain kitchen upgrades, floor tiling, carpets, laminates, bathroom upgrades, ceiling height adjustments, light and electrical fittings, which are not included in the house price, or which are not supplied by Coral Homes, such as electrical appliances, homewares, furniture, driveways, pools, pergolas, landscaping and fencing. Floorplans throughout this guide are indicative only, conceptual in nature and subject to change. Floorplans may depict features and/or other products which are not included in the house design, not included in the house price and/or not available from Coral Homes. Lot width is based on the Designer facade and is to be used as a guide only. Lot width requirements may change due to developer covenants and Local Authority guidelines. External Colours (walls, roof and window/doors etc) shown in this guide are indicative only and may require additional costs to comply with BASIX requirements. Coral Homes recommend discussing ways to minimise costs associated with Energy Efficiency compliance with your New Home Consultant. © Coral Homes Pty Ltd. The copyright in the floorplans and facades depicted in this brochure are owned by or licensed to Coral Homes Pty Ltd and may not be reproduced, copied or dealt with in any manner which infringes the exclusive rights of Coral Homes Pty Ltd as prescribed by the Copyright Act 1968 without the express written authorisation of Coral Homes Pty Ltd. Coral Homes Pty Ltd QBCC 50792, NSW OFT 62084C, Coral Homes Qld Pty Ltd QBCC 1014053 ABN 44 011 032 929.

*On display*

Highlands

THE FAIRWAYS ESTATE,  
KENSINGTON GROVE, QLD



Acreege *Exteriors*

Drawing inspiration from nature, our acreage facade options blend organic textures with timeless design.

From the rustic charm of the Lodge and Alpine styles to the breezy elegance of Coastal and Hamptons-inspired looks, each facade offers a unique take on relaxed, contemporary living.

Featuring a refined mix of materials, such as natural timber, stone, render and brick, our acreage facades are designed to sit effortlessly within the landscape while delivering lasting street appeal.

Photography from Highlands at The Fairways, Kensington Grove depicts non-standard facade items including feature stone, timber and render finish, upgraded 2340mm entry door, stained entry door frame, upgraded windows, window furnishings, french doors, front pergola, timber finish on garage door, feature lighting, raked ceiling, ceiling height, roof ventilator and other items which Coral Homes may not offer or are subject to additional charge. Items such as homewares, furniture, timber-look decking, paved path, external concrete driveways and path, landscaping and fencing are not supplied by Coral Homes. Speak with your New Home Consultant for more details.

# Laid-back living *meets contemporary design*

Welcome to a modern lodge – a relaxed, yet luxurious acreage home by Coral Homes. Choose serenity and live amongst wide open spaces, lush greenery and crisp, country air with a Coral Homes' acreage design.

A new take on rural living, these wider home designs are orientated towards outside living, creating your very own country retreat. The innovative floorplans are separated into three wings for privacy – a master bedroom retreat, kids space and central living hub. For ease and flow, acreage designs typically have wide hallways, a spacious layout and an abundance of natural light.

What makes a timeless acreage home is the way it seamlessly blends with the natural environment; soothing neutral colours, hardwood timber cladding and stone features. A mix of natural materials all work together in harmony to deliver a contemporary take on a traditional acreage home. Black accents on windows and door frames bring a modern twist to the lodge-style theme.

Throughout the interiors, splashes of greenery, natural colours, timber cladding and plush linen furnishings add to the acreage style, inviting the tranquillity of the outdoors in.



*On display*

**Highlands**  
EVERLEIGH ESTATE,  
GREENBANK, QLD



# Acreage Home Designs

Choose relaxed luxury.  
Build an acreage.

Explore our home designs and discover contemporary country living with a specialised acreage home builder.



Photography from Highlands at Everleigh Estate, Greenbank depicts non-standard items including upgraded porcelain tiling, upgraded windows, upgraded rangehood including feature shelf and rangehood enclosure, 900mm appliances, black tapware, undermount sink, feature tiling, upgraded island benchtop with feature posts and shadowline projection, upgraded Caesarstone®, cabinetry profiles, finishes and handles, feature lighting, raked and square set ceiling, ceiling height and other items which Coral Homes may not offer or are subject to additional charge. Items such as homewares, furniture, landscaping, pergola and fencing are not supplied by Coral Homes. Speak with your New Home Consultant for more details.



# Highlands Series

A modern take on acreage living, the Highlands Series leads into two main wings from the hub of the home. One side being the master retreat and the other, the kid's bedrooms, study and activity space, allowing each member of the family to have a private sanctuary to relax and unwind.

With a large alfresco area and three main living spaces, the Highlands Series floorplans have an open-plan flow that brings the outside in.

*View the Series*



Photography from Highlands at Everleigh Estate, Greenbank depicts non-standard facade items including feature stone, brick, timber cladding and render finish, upgraded 2340mm entry door and sidelight window, stained entry door frame, upgraded windows, window furnishings, feature lighting, raked ceiling, ceiling height, built-in cabinetry and other items which Coral Homes may not offer or are subject to additional charge. Items such as homewares, furniture, paved path, landscaping and fencing are not supplied by Coral Homes. Speak with your New Home Consultant for more details.



# Highlands 256N

4 | 3 | 2 | 2

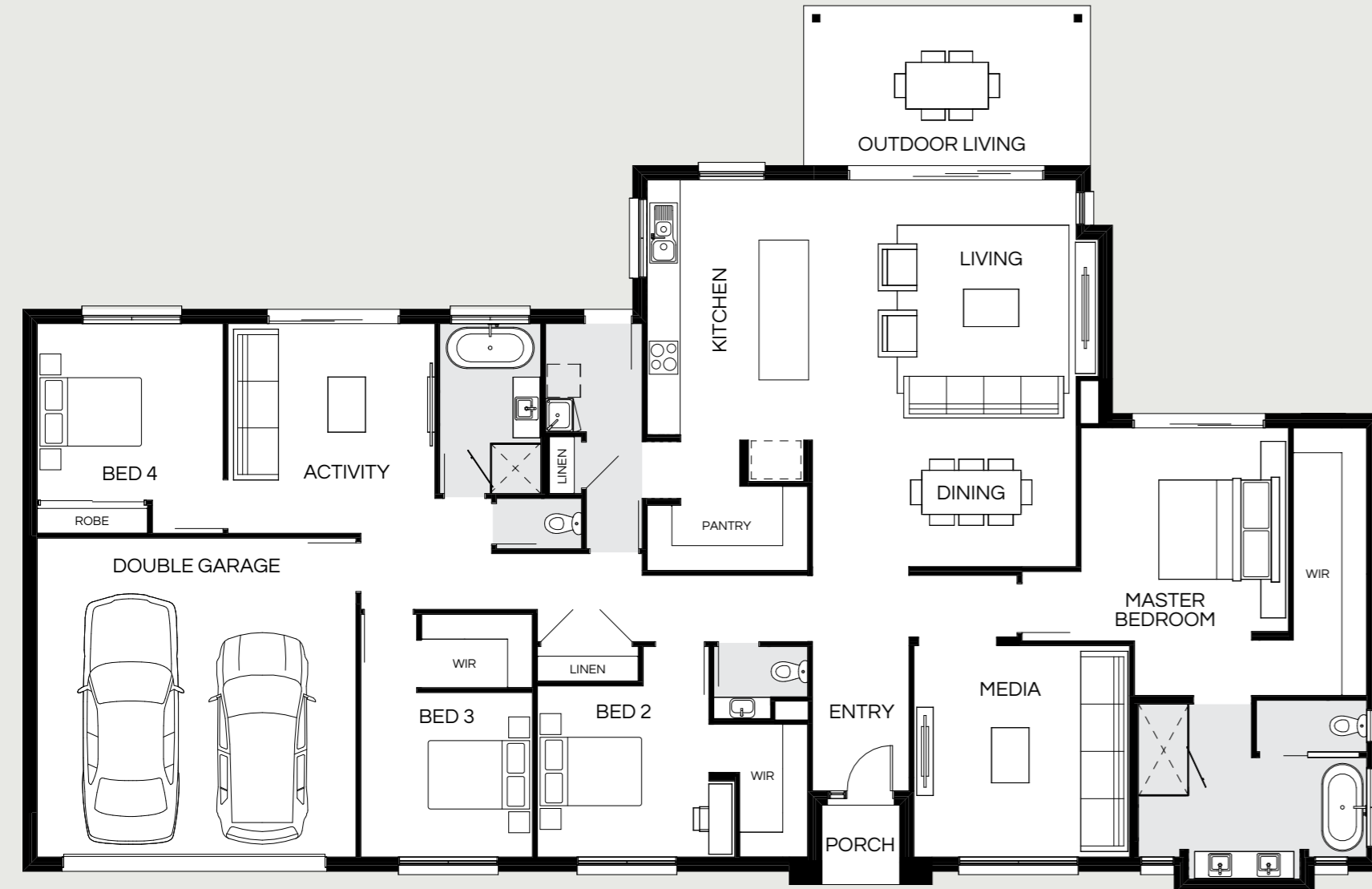
|              |                                |
|--------------|--------------------------------|
| Master Bed   | 3580 x 3600                    |
| Bed 2        | 3820 x 3000                    |
| Bed 3        | 2900 x 3000                    |
| Bed 4        | 3020 x 3000                    |
| Activity     | 3620 x 3000                    |
| Dining       | 2770 x 4480                    |
| Living       | 3820 x 4590                    |
| Media        | 3750 x 3620                    |
| Outdoor      | 2700 x 5000                    |
| House Length | 15.195m                        |
| House Width  | 23.94m                         |
| House Area   | 256.90m <sup>2</sup> (27.65sq) |



Most popular

# Highlands 280N

4 | 3 | 2.5 | 2



|              |                                |
|--------------|--------------------------------|
| Master Bed   | 3880 x 3780                    |
| Bed 2        | 3120 x 3130                    |
| Bed 3        | 3000 x 3130                    |
| Bed 4        | 3220 x 3390                    |
| Activity     | 3820 x 3770                    |
| Dining       | 2850 x 4800                    |
| Living       | 4180 x 4800                    |
| Media        | 3850 x 3930                    |
| Outdoor      | 2900 x 5200                    |
| House Length | 16.095m                        |
| House Width  | 24.63m                         |
| House Area   | 280.72m <sup>2</sup> (30.22sq) |

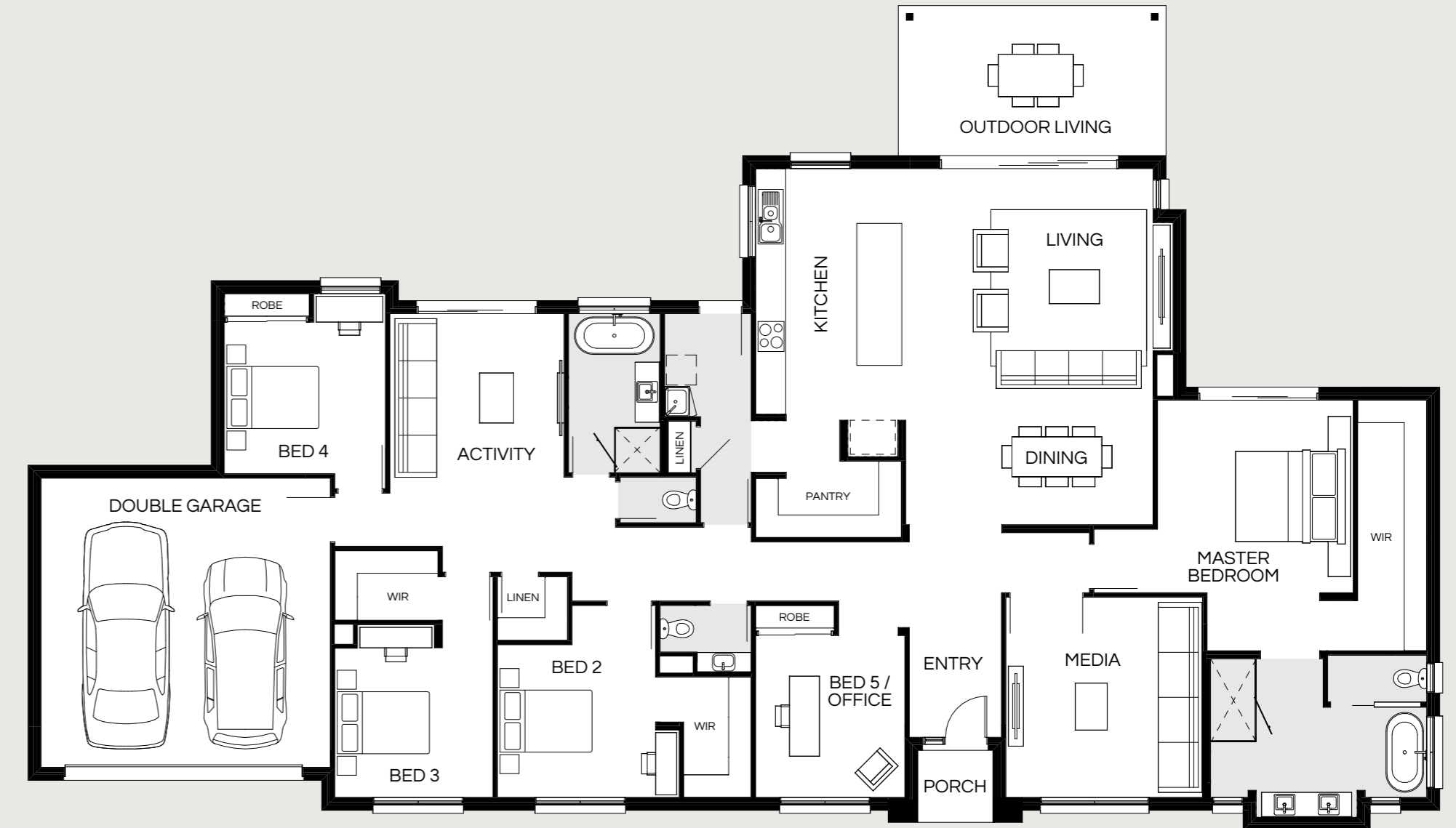


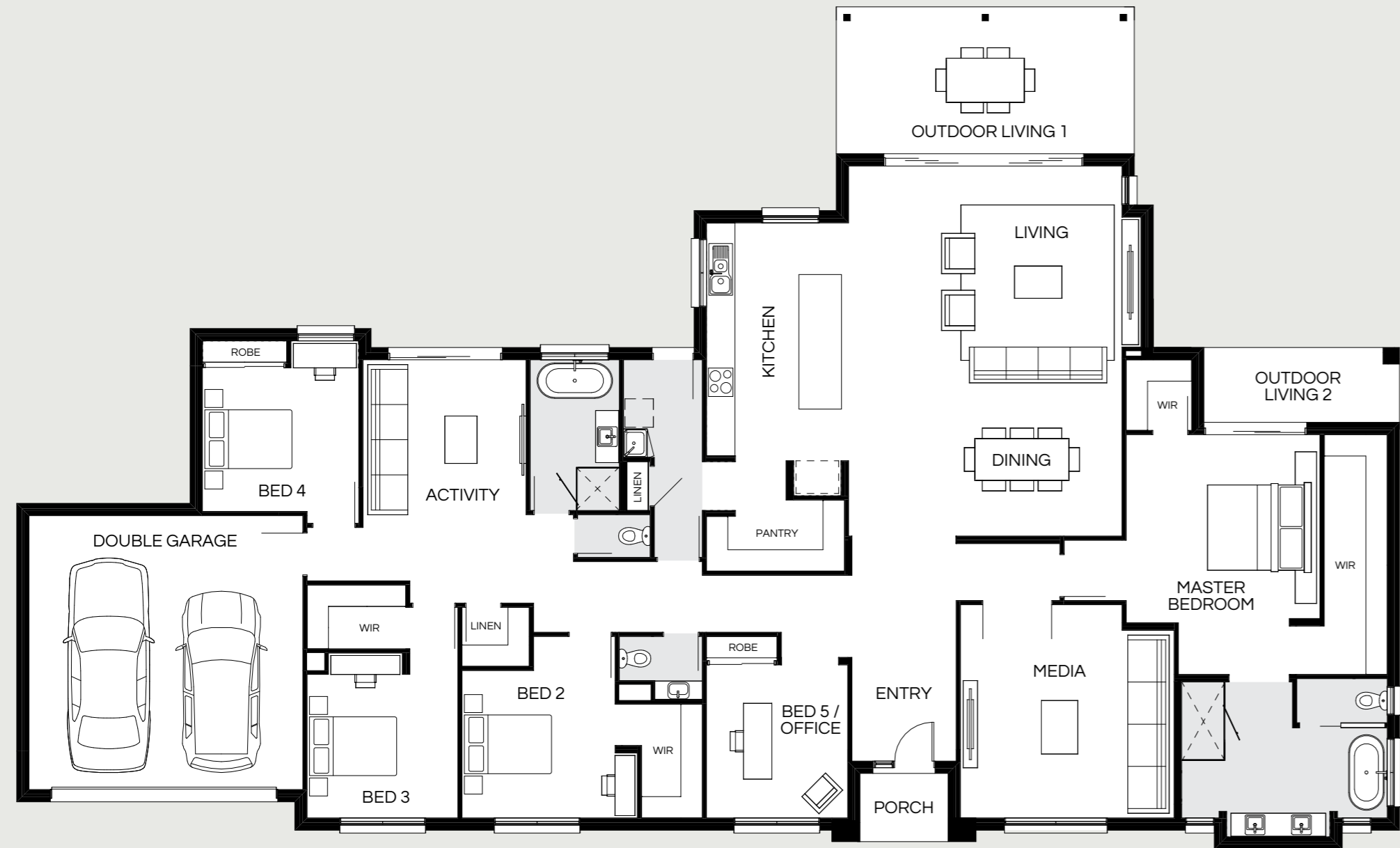


# Highlands 307N

5 | 3 | 2.5 | 2

|                |                                |
|----------------|--------------------------------|
| Master Bed     | 3870 x 3930                    |
| Bed 2          | 3070 x 3180                    |
| Bed 3          | 3000 x 3180                    |
| Bed 4          | 3050 x 3240                    |
| Bed 5 / Office | 3255 x 3000                    |
| Activity       | 4670 x 3500                    |
| Dining         | 2940 x 4960                    |
| Living         | 4200 x 5030                    |
| Media          | 4020 x 3950                    |
| Outdoor        | 3000 x 5350                    |
| House Length   | 16.49m                         |
| House Width    | 28.21m                         |
| House Area     | 307.59m <sup>2</sup> (33.11sq) |





# Highlands 340N

5 | 3 | 2.5 | 2

|                |                                |
|----------------|--------------------------------|
| Master Bed     | 3990 x 4110                    |
| Bed 2          | 3130 x 3250                    |
| Bed 3          | 3050 x 3200                    |
| Bed 4          | 3050 x 3320                    |
| Bed 5 / Office | 3250 x 3000                    |
| Activity       | 4685 x 3460                    |
| Dining         | 3030 x 5790                    |
| Living         | 4800 x 5790                    |
| Media          | 4520 x 4530                    |
| Outdoor 1      | 3100 x 6290                    |
| Outdoor 2      | 1580 x 4130                    |
| House Length   | 17.78m                         |
| House Width    | 29.19m                         |
| House Area     | 340.33m <sup>2</sup> (36.63sq) |

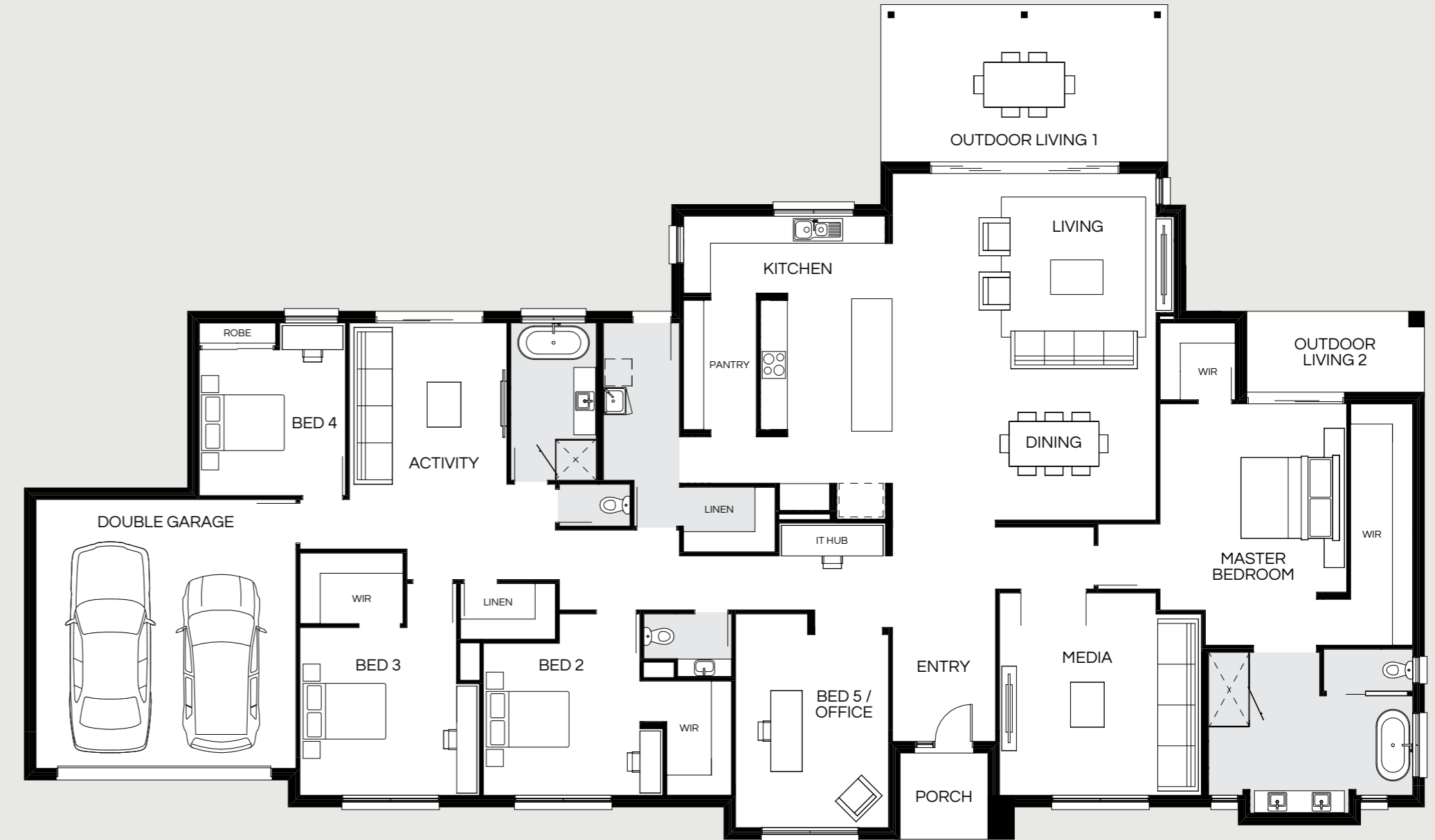




# Highlands 386N

5 | 3 | 2.5 | 2

|                |                                |
|----------------|--------------------------------|
| Master Bed     | 4610 x 4170                    |
| Bed 2          | 3400 x 3500                    |
| Bed 3          | 3750 x 3500                    |
| Bed 4          | 3260 x 3270                    |
| Bed 5 / Office | 4315 x 3420                    |
| Activity       | 5050 x 3520                    |
| Dining         | 3100 x 5880                    |
| Living         | 4630 x 5880                    |
| Media          | 4520 x 4510                    |
| Outdoor 1      | 3500 x 6380                    |
| Outdoor 2      | 1800 x 3950                    |
| House Length   | 18.575m                        |
| House Width    | 31.14m                         |
| House Area     | 386.96m <sup>2</sup> (41.65sq) |



# Highlands Facades

Lodge



Alpine



East Hamptons



Hamptons



Mornington



Designer



All facade images are intended as a guide only and may depict non-standard items such as feature stone, feature brickwork, timber-look panelling, render finish, upgraded garage door colour, two or more paint colours, grand entry doors with sidelight windows, upgraded windows, feature lighting and other items which Coral Homes may not offer or may be subject to additional charge. They are indicative only, conceptual in nature and are subject to design changes without notice. External works such as driveways, landscaping and fencing are not supplied by Coral Homes. For accurate and current information, including house-specific facade drawings, please speak with your Coral Homes New Home Consultant.

All facade images are intended as a guide only and may depict non-standard items such as feature stone, feature brickwork, timber-look panelling, render finish, upgraded garage door colour, two or more paint colours, grand entry doors, upgraded windows, feature lighting and other items which Coral Homes may not offer or may be subject to additional charge. Facades are indicative only, conceptual in nature and are subject to design changes without notice. External works such as driveways, landscaping and fencing are not supplied by Coral Homes. For accurate and current information, including house-specific facade drawings, please speak with your Coral Homes New Home Consultant.

*On display*

## Highlands

THE FAIRWAYS ESTATE,  
KENSINGTON GROVE, QLD



Photography from Highlands at The Fairways, Kensington Grove depicts non-standard items including upgraded timber flooring, upgraded rangehood including feature shelf and rangehood enclosure, dishwasher, feature splashback tiling, built-in cabinetry, cabinetry profiles, finishes and handles, upgraded island bench with shadowline and feature gable, upgraded Caesarstone®, black tapware, feature lighting, stacker doors and handles, french doors, upgraded windows, raked and square set ceiling, ceiling height, stained timber posts, feature stone and render brick piers and other items which Coral Homes may not offer or are subject to additional charge. Items such as homewares, furniture, landscaping, pergola, built-in BBQ, outdoor paving, retaining walls and fencing are not supplied by Coral Homes. Speak with your New Home Consultant for more details.

Highlands – The Fairways Estate, Kensington Grove



Photography from Highlands at The Fairways, Kensington Grove depicts non-standard items including upgraded timber flooring, upgraded rangehood including feature shelf and rangehood enclosure, 900mm appliances, dishwasher, built-in microwave, feature splashback tiling, built-in cabinetry, cabinetry profiles, finishes and handles, upgraded island bench with shadowline and feature gable, upgraded Caesarstone®, black tapware, feature lighting, french doors, upgraded windows, raked and square set ceiling, ceiling height, stained timber posts, feature stone and render brick piers and other items which Coral Homes may not offer or are subject to additional charge. Items such as homewares, furniture, landscaping, pergola, built-in BBQ, outdoor paving, retaining walls and fencing are not supplied by Coral Homes. Speak with your New Home Consultant for more details.

## Crestview Series

Experience the freedom of space with our Crestview acreage designs, the perfect solution for expansive living and modern comfort.

Choose from our thoughtfully designed standard floorplans or elevate your home with the optional guest suite expansion, ideal for multigenerational living or hosting with ease.

*View the Series*

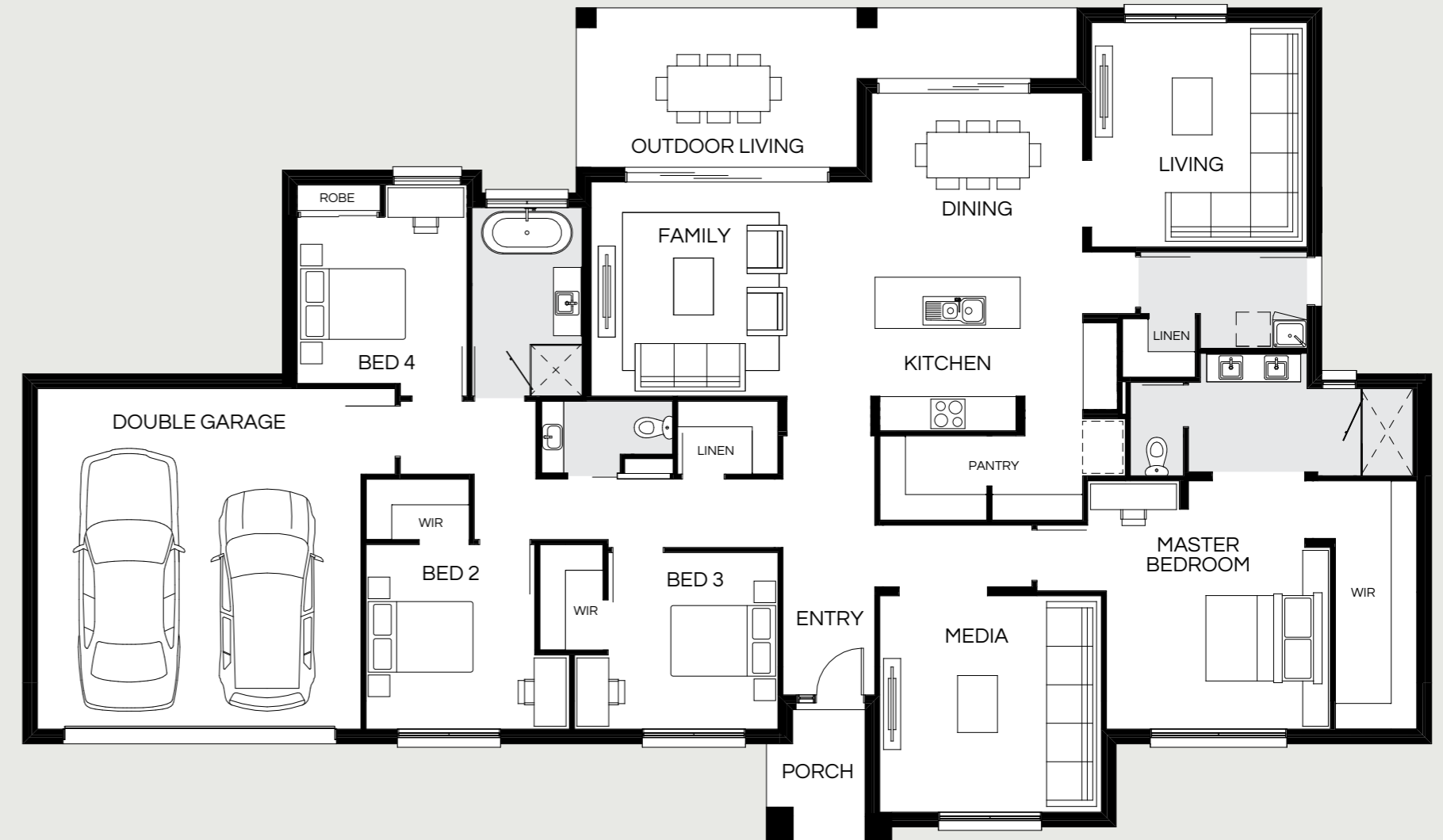




# Crestview 272N

4 | 3 | 2.5 | 2

|              |                                |
|--------------|--------------------------------|
| Master Bed   | 3870 x 3950                    |
| Bed 2        | 3260 x 2980                    |
| Bed 3        | 3120 x 3000                    |
| Bed 4        | 2940 x 3000                    |
| Dining       | 3240 x 3720                    |
| Family       | 3780 x 4930                    |
| Living       | 3960 x 3800                    |
| Media        | 3820 x 3910                    |
| Outdoor      | 2800 x 8790                    |
| House Length | 14.63m                         |
| House Width  | 24.74m                         |
| House Area   | 272.28m <sup>2</sup> (29.31sq) |



# Crestview 309N

4 | 5 | 2.5 | 2



|            |             |
|------------|-------------|
| Master Bed | 3870 x 4030 |
| Bed 2      | 3150 x 3000 |
| Bed 3      | 3120 x 3000 |
| Bed 4      | 3030 x 3100 |

|          |             |
|----------|-------------|
| Activity | 3860 x 3260 |
| Dining   | 3240 x 3820 |
| Family   | 3780 x 5190 |
| Living   | 3960 x 3950 |
| Media    | 3920 x 3970 |
| Study    | 3120 x 3000 |

|         |             |
|---------|-------------|
| Outdoor | 2800 x 9150 |
|---------|-------------|

|              |                                |
|--------------|--------------------------------|
| House Length | 14.73m                         |
| House Width  | 28.06m                         |
| House Area   | 309.80m <sup>2</sup> (33.35sq) |



Floorplan and lot width based on Designer facade. Floorplan is indicative only, conceptual in nature and subject to change without notice. Floorplan may depict features and/or other products which are not included in the house design, not included in the house price and/or not available from Coral Homes. All measurements are in millimetres unless otherwise stated. Floorplan measurements are approximate and are not to scale. Lot width is a guide only and may change due to developer covenants and Local Authority guidelines. For more information speak to your Coral Homes New Home Consultant. © Coral Homes Pty Ltd.

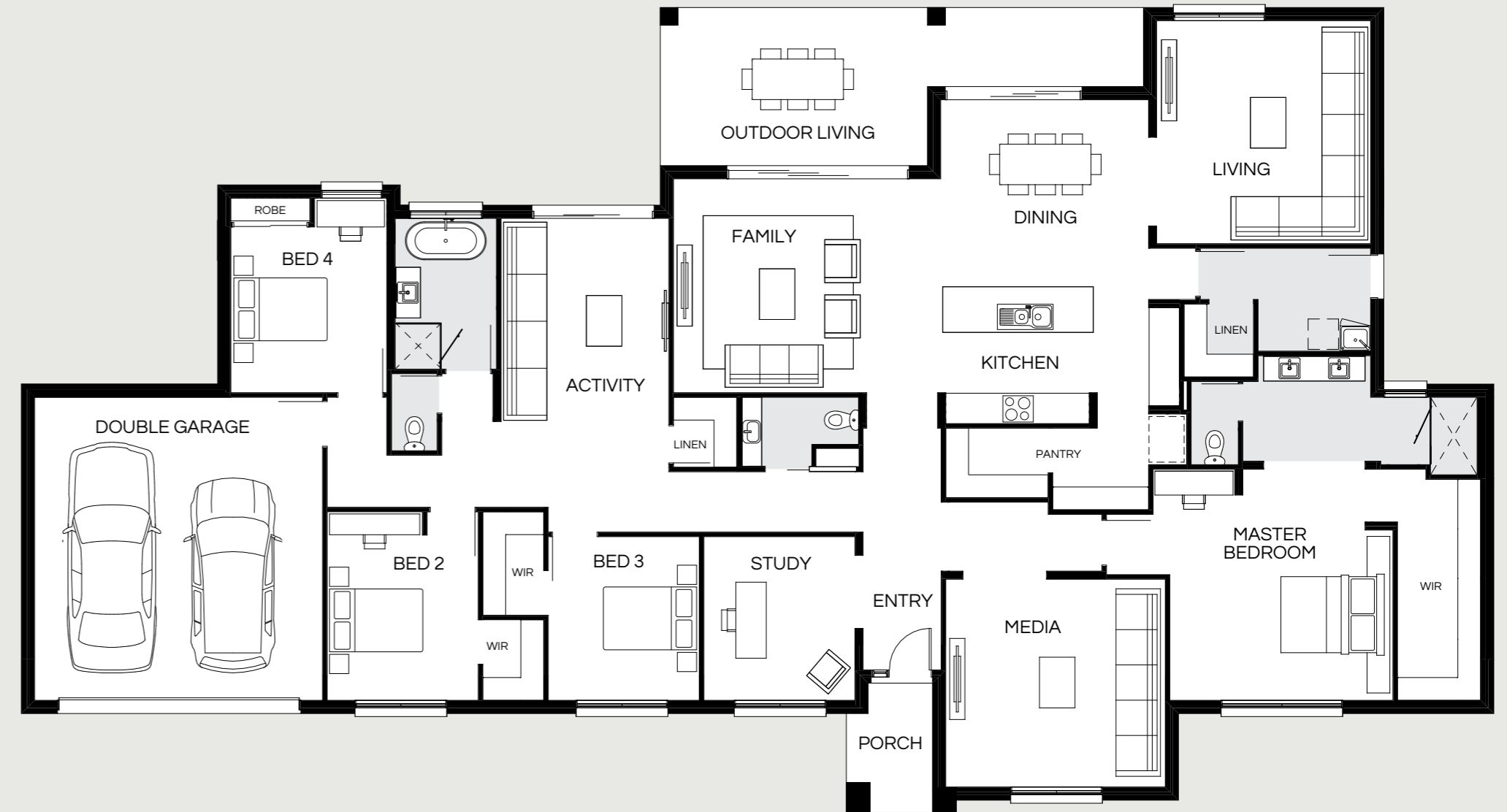
Photography from Highlands at The Fairways, Kensington Grove depicts non-standard items including upgraded timber flooring, upgraded rangehood including feature shelf and rangehood enclosure, dishwasher, feature splashback tiling, cabinetry profiles, finishes and handles, upgraded island bench with shadowline and feature gable, upgraded Caesarstone®, black tapware, feature lighting, stacker doors and handles, french doors, upgraded windows, raked and square set ceiling, ceiling height, stained timber posts, feature stone and render brick piers and other items which Coral Homes may not offer or are subject to additional charge. Items such as homewares, furniture, landscaping, pergola, built-in BBQ, outdoor paving, retaining walls and fencing are not supplied by Coral Homes. Speak with your New Home Consultant for more details.



# Crestview 338N

4 | 5 | 2.5 | 2

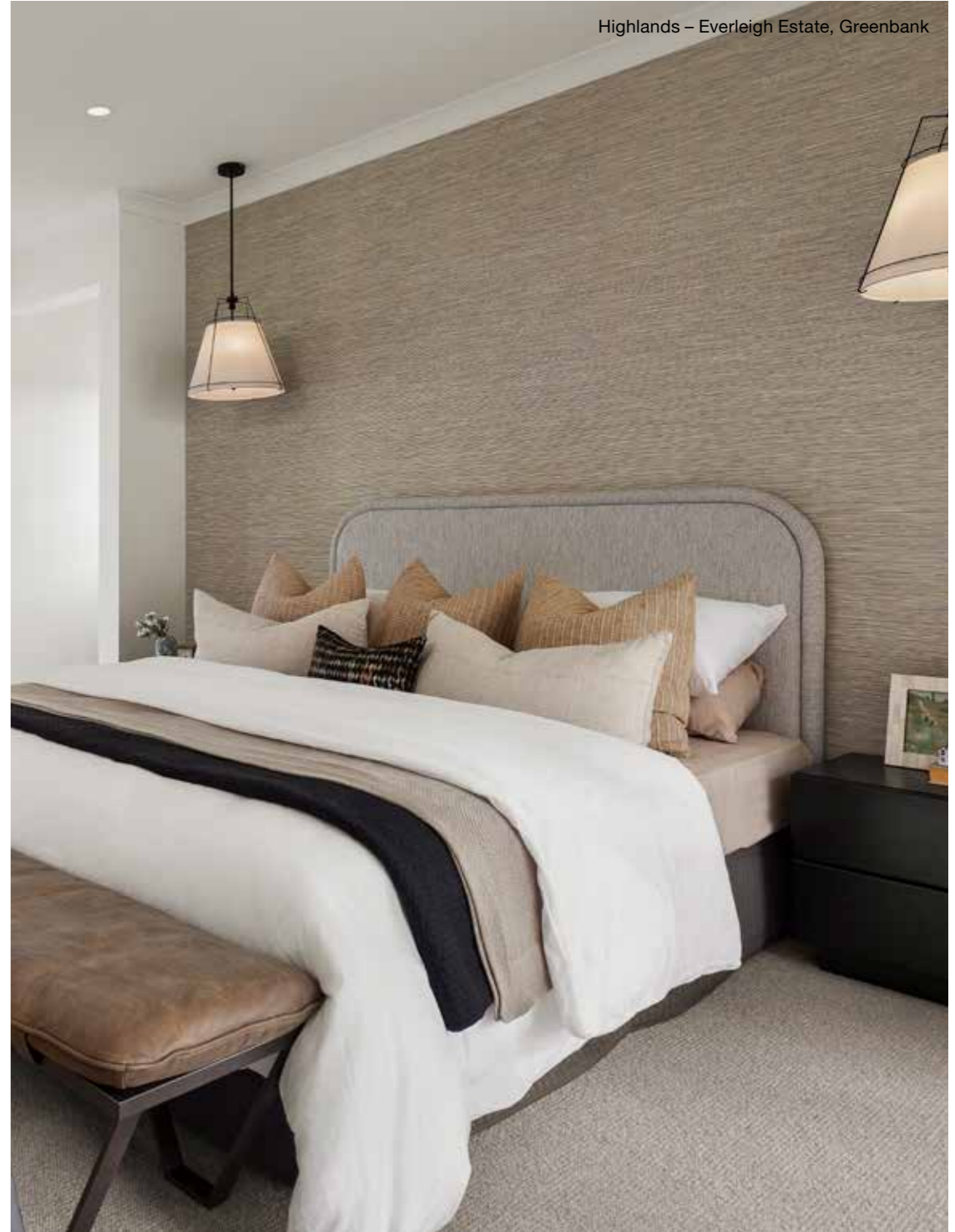
|              |                                |
|--------------|--------------------------------|
| Master Bed   | 4070 x 4420                    |
| Bed 2        | 3280 x 3000                    |
| Bed 3        | 3250 x 3000                    |
| Bed 4        | 3290 x 3100                    |
| Activity     | 4010 x 3330                    |
| Dining       | 3700 x 4120                    |
| Family       | 4240 x 5270                    |
| Living       | 4420 x 4240                    |
| Media        | 4120 x 4350                    |
| Study        | 3250 x 3000                    |
| Outdoor      | 3120 x 9530                    |
| House Length | 15.88m                         |
| House Width  | 29.04m                         |
| House Area   | 338.77m <sup>2</sup> (36.47sq) |



# Crestview 378N

5  | 4  | 2.5  | 2

|               |                                |
|---------------|--------------------------------|
| Master Bed    | 4670 x 4070                    |
| Bed 2         | 3530 x 3300                    |
| Bed 3         | 3570 x 3300                    |
| Bed 4         | 3710 x 3220                    |
| Bed 5 / Study | 3000 x 3200                    |
| <hr/>         |                                |
| Activity      | 4010 x 3620                    |
| Dining        | 3700 x 4310                    |
| Family        | 4240 x 5470                    |
| Living        | 4520 x 4540                    |
| Media         | 4420 x 4220                    |
| <hr/>         |                                |
| Outdoor       | 3480 x 9920                    |
| <hr/>         |                                |
| House Length  | 16.54m                         |
| House Width   | 31.15m                         |
| House Area    | 378.81m <sup>2</sup> (40.78sq) |



Floorplan and lot width based on Designer facade. Floorplan is indicative only, conceptual in nature and subject to change without notice. Floorplan may depict features and/or other products which are not included in the house design, not included in the house price and/or not available from Coral Homes. All measurements are in millimetres unless otherwise stated. Floorplan measurements are approximate and are not to scale. Lot width is a guide only and may change due to developer covenants and Local Authority guidelines. For more information speak to your Coral Homes New Home Consultant. © Coral Homes Pty Ltd.

Photography from Highlands at Everleigh Estate, Greenbank depicts non-standard items including upgraded carpet, feature lighting, ceiling height and other items which Coral Homes may not offer or are subject to additional charge. Items such as homewares, wallpaper and furniture are not supplied by Coral Homes. Speak with your New Home Consultant for more details.

# Crestview Facades

Alpine



Lodge



Coastal



Hamptons



East Hamptons



Designer



All facade images are intended as a guide only and may depict non-standard items such as feature stone, feature brickwork, timber-look panelling, render finish, upgraded garage door colour, two or more paint colours, grand entry doors with sidelight windows, upgraded windows, feature lighting and other items which Coral Homes may not offer or may be subject to additional charge. They are indicative only, conceptual in nature and are subject to design changes without notice. External works such as driveways, landscaping and fencing are not supplied by Coral Homes. For accurate and current information, including house-specific facade drawings, please speak with your Coral Homes New Home Consultant.

All facade images are intended as a guide only and may depict non-standard items such as feature brickwork, timber-look panelling, render finish, upgraded garage door colour, two or more paint colours, grand entry doors with sidelight windows, upgraded windows, feature lighting and other items which Coral Homes may not offer or may be subject to additional charge. Facades are indicative only, conceptual in nature and are subject to design changes without notice. External works such as driveways, landscaping and fencing are not supplied by Coral Homes. For accurate and current information, including house-specific facade drawings, please speak with your Coral Homes New Home Consultant.



Photography from Highlands at The Fairways, Kensington Grove depicts non-standard items including upgraded timber flooring, upgraded rangehood including feature shelf and rangehood enclosure, 900mm appliances, dishwasher, built-in microwave, feature splashback tiling, built-in cabinetry, cabinetry profiles, finishes and handles, upgraded island bench with shadowline and feature gable, upgraded Caesarstone®, black tapware, feature lighting, french doors, upgraded windows, raked and square set ceiling, ceiling height, stained timber posts and other items which Coral Homes may not offer or are subject to additional charge. Items such as homewares, furniture, landscaping, pergola, outdoor paving, retaining walls and fencing are not supplied by Coral Homes. Speak with your New Home Consultant for more details.



Photography from Highlands at The Fairways, Kensington Grove depicts non-standard items including upgraded timber flooring, built-in cabinetry, feature lighting, upgraded windows, stacker doors and handles, raked and square set ceiling, ceiling height, stained timber posts, feature stone and render brick piers and other items which Coral Homes may not offer or are subject to additional charge. Items such as homewares, furniture, landscaping, pergola, outdoor paving, retaining walls and fencing are not supplied by Coral Homes. Speak with your New Home Consultant for more details.

## Brookfield Series

Discover spacious living with an acreage home design from the Brookfield Series. With four bedrooms and multiple living areas, the Brookfield Series is a functional and relaxing family home. Choose from our range of facades to match your style.

*View the Series*





# Brookfield 265N

4 | 3 | 2 | 2

|              |                                |
|--------------|--------------------------------|
| Master Bed   | 3800 x 3460                    |
| Bed 2        | 3260 x 3000                    |
| Bed 3        | 3530 x 3200                    |
| Bed 4        | 3240 x 3200                    |
| Dining       | 3650 x 3790                    |
| Family       | 4000 x 4800                    |
| Living       | 4050 x 3840                    |
| Media        | 4490 x 3960                    |
| Outdoor      | 2760 x 8790                    |
| House Length | 14.09m                         |
| House Width  | 23.17m                         |
| House Area   | 265.59m <sup>2</sup> (28.59sq) |



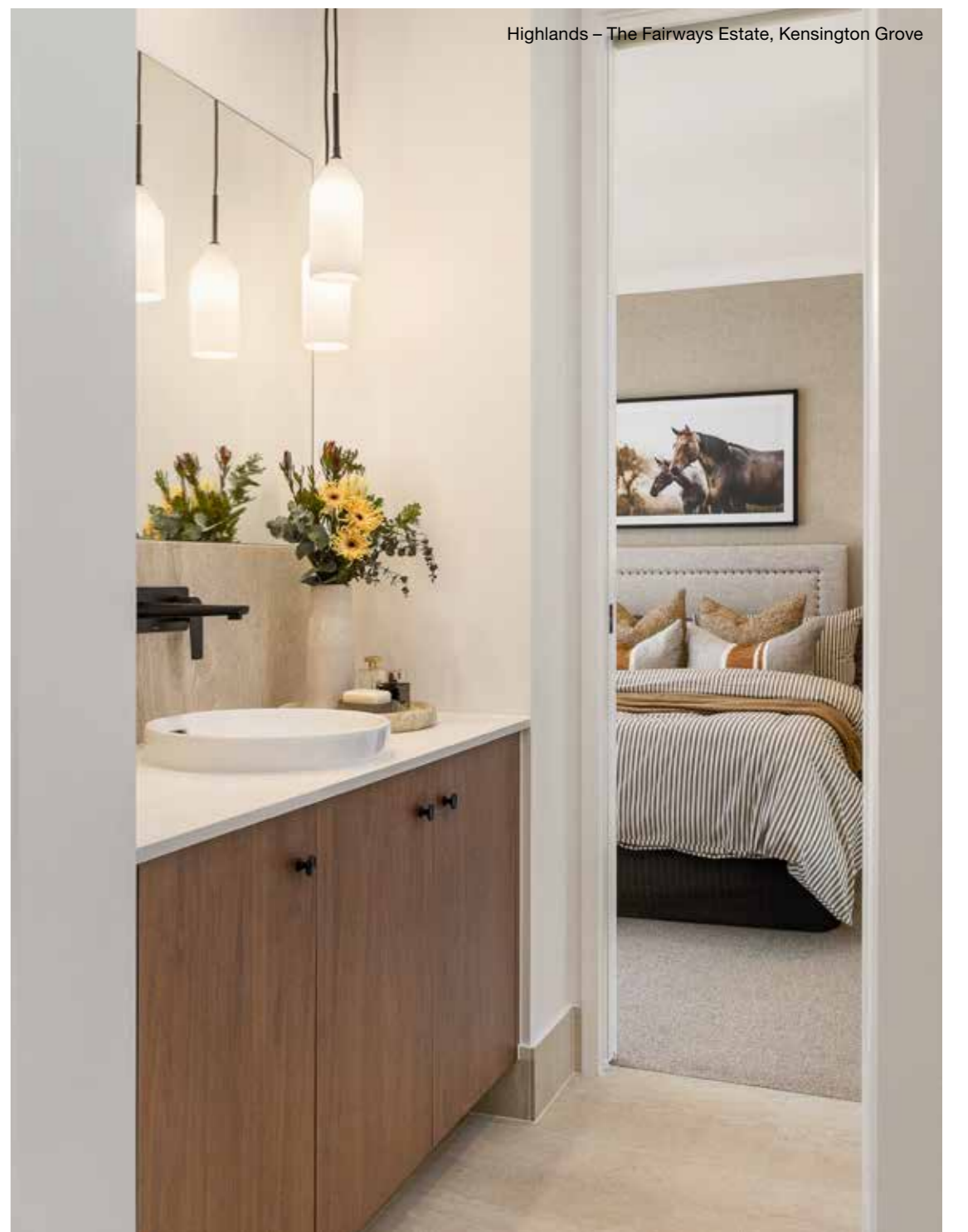


# Brookfield 284N

4 | 3 | 2 | 2

|              |                                |
|--------------|--------------------------------|
| Master Bed   | 3450 x 4650                    |
| Bed 2        | 3050 x 3000                    |
| Bed 3        | 3070 x 3000                    |
| Bed 4        | 3240 x 3000                    |
| Dining       | 3660 x 3800                    |
| Family       | 4000 x 5280                    |
| Living       | 4100 x 4000                    |
| Media        | 4490 x 4230                    |
| Outdoor      | 2760 x 9280                    |
| House Length | 14.09m                         |
| House Width  | 24.73m                         |
| House Area   | 284.33m <sup>2</sup> (30.61sq) |

Highlands – The Fairways Estate, Kensington Grove



Floorplan and lot width based on Designer facade. Floorplan is indicative only, conceptual in nature and subject to change without notice. Floorplan may depict features and/or other products which are not included in the house design, not included in the house price and/or not available from Coral Homes. All measurements are in millimetres unless otherwise stated. Floorplan measurements are approximate and are not to scale. Lot width is a guide only and may change due to developer covenants and Local Authority guidelines. For more information speak to your Coral Homes New Home Consultant. © Coral Homes Pty Ltd.

Photography from Highlands at The Fairways, Kensington Grove depicts non-standard items including upgraded porcelain floor and feature tiling, cabinetry finishes and handles, black tapware, upgraded mirror, feature lighting, upgraded carpet, ceiling height and other items which Coral Homes may not offer or are subject to additional charge. Items such as homewares, wallpaper and furniture are not supplied by Coral Homes. Speak with your New Home Consultant for more details.



# Brookfield 300N

4 | 3 | 2 | 2

|              |                                |
|--------------|--------------------------------|
| Master Bed   | 4650 x 3590                    |
| Bed 2        | 3150 x 3200                    |
| Bed 3        | 3070 x 3000                    |
| Bed 4        | 3240 x 3000                    |
| Dining       | 3650 x 3840                    |
| Family       | 4240 x 5435                    |
| Living       | 4650 x 4100                    |
| Media        | 4570 x 4270                    |
| Outdoor      | 3120 x 9440                    |
| House Length | 14.97m                         |
| House Width  | 25.03m                         |
| House Area   | 300.73m <sup>2</sup> (32.37sq) |



Most popular



# Brookfield 330N

5 | 4 | 2.5 | 2

|                |                                |
|----------------|--------------------------------|
| Master Bed     | 4655 x 3590                    |
| Bed 2          | 3160 x 3000                    |
| Bed 3          | 3080 x 3000                    |
| Bed 4          | 3150 x 3100                    |
| Bed 5 / Office | 3160 x 2900                    |
| Activity       | 4260 x 3330                    |
| Dining         | 3650 x 3840                    |
| Family         | 4240 x 5380                    |
| Living         | 4650 x 4200                    |
| Media          | 4570 x 4270                    |
| Outdoor        | 3120 x 9320                    |
| House Length   | 14.97m                         |
| House Width    | 28m                            |
| House Area     | 330.23m <sup>2</sup> (35.55sq) |



Floorplan and lot width based on Designer facade. Floorplan is indicative only, conceptual in nature and subject to change without notice. Floorplan may depict features and/or other products which are not included in the house design, not included in the house price and/or not available from Coral Homes. All measurements are in millimetres unless otherwise stated. Floorplan measurements are approximate and are not to scale. Lot width is a guide only and may change due to developer covenants and Local Authority guidelines. For more information speak to your Coral Homes New Home Consultant. © Coral Homes Pty Ltd.

Photography from Highlands at The Fairways, Kensington Grove depicts non-standard items including upgraded porcelain floor and feature tiling, chrome bermuda smart tile, cabinetry finishes and handles, black tapware, upgraded mirror, square sinks, upgraded bath and floor-mounted bath mixer, feature lighting, upgraded windows, window furnishings, ceiling height and other items which Coral Homes may not offer or are subject to additional charge. Items such as homewares, landscaping and fencing are not supplied by Coral Homes. Speak with your New Home Consultant for more details.

# Brookfield Facades

Lodge



East Hamptons



Coastal



Hamptons



Mornington



Designer



All facade images are intended as a guide only and may depict non-standard items such as feature brickwork, timber-look panelling, render finish, upgraded garage door colour, two or more paint colours, grand entry doors with sidelight windows, upgraded windows, feature lighting and other items which Coral Homes may not offer or may be subject to additional charge. Facades are indicative only, conceptual in nature and are subject to design changes without notice. External works such as driveways, landscaping and fencing are not supplied by Coral Homes. For accurate and current information, including house-specific facade drawings, please speak with your Coral Homes New Home Consultant.

All facade images are intended as a guide only and may depict non-standard items such as feature brickwork, timber-look panelling, render finish, upgraded garage door colour, two or more paint colours, grand entry doors with sidelight windows, upgraded windows, feature lighting and other items which Coral Homes may not offer or may be subject to additional charge. Facades are indicative only, conceptual in nature and are subject to design changes without notice. External works such as driveways, landscaping and fencing are not supplied by Coral Homes. For accurate and current information, including house-specific facade drawings, please speak with your Coral Homes New Home Consultant.

Highlands – Everleigh Estate, Greenbank



Photography from Highlands at Everleigh Estate, Greenbank depicts non-standard items including upgraded porcelain tiling, upgraded rangehood including feature shelf and rangehood enclosure, 900mm appliances, black tapware, undermount sink, upgraded island bench with shadowline and feature gable, upgraded Caesarstone®, built-in cabinetry, profiles, finishes and handles, feature stone and fireplace, feature lighting, raked and square set ceiling, ceiling height, upgraded windows, window furnishings, bifold doors and handles, stacker doors and handles, upgraded 2340mm entry door and sidelight window, stained entry door frame, feature stone and render brick piers, roof ventilator and other items which Coral Homes may not offer or are subject to additional charge. Items such as homewares, furniture, built-in BBQ, retaining walls, timber-look decking, outdoor tiling, pergolas, landscaping, pools and fencing are not supplied by Coral Homes. Speak with your New Home Consultant for more details.

Highlands – The Fairways Estate, Kensington Grove



Photography from Highlands at The Fairways, Kensington Grove depicts non-standard items including window furnishings, stacker doors and handles, feature lighting, upgraded carpet, black tapware, ceiling height and other items which Coral Homes may not offer or are subject to additional charge. Items such as homewares, furniture, landscaping, pergolas, timber-look decking and fencing are not supplied by Coral Homes. Speak with your New Home Consultant for more details.

## Winton Series

Welcome to the laid-back country lifestyle of the Winton Series. Designed specifically for acreage land, these home designs suit blocks of 30m+ wide. Available in multiple facades, you can build this spacious home to suit your style. Enjoy four bedrooms, multiple living spaces, a large outdoor entertaining area and a modern kitchen with a generously sized walk-in pantry.

*View the Series*





# Winton 222N

4 | 2 | 2 | 2

|                |                                |
|----------------|--------------------------------|
| Master Bed     | 4690 x 3600                    |
| Bed 2          | 3000 x 3000                    |
| Bed 3          | 3000 x 3000                    |
| Bed 4 / Study  | 3000 x 3020                    |
| Dining         | 3960 x 3200                    |
| Family         | 4530 x 4350                    |
| Lounge / Media | 4250 x 3760                    |
| Outdoor        | 3000 x 6260                    |
| House Length   | 12.35m                         |
| House Width    | 25.34m                         |
| House Area     | 222.76m <sup>2</sup> (23.98sq) |



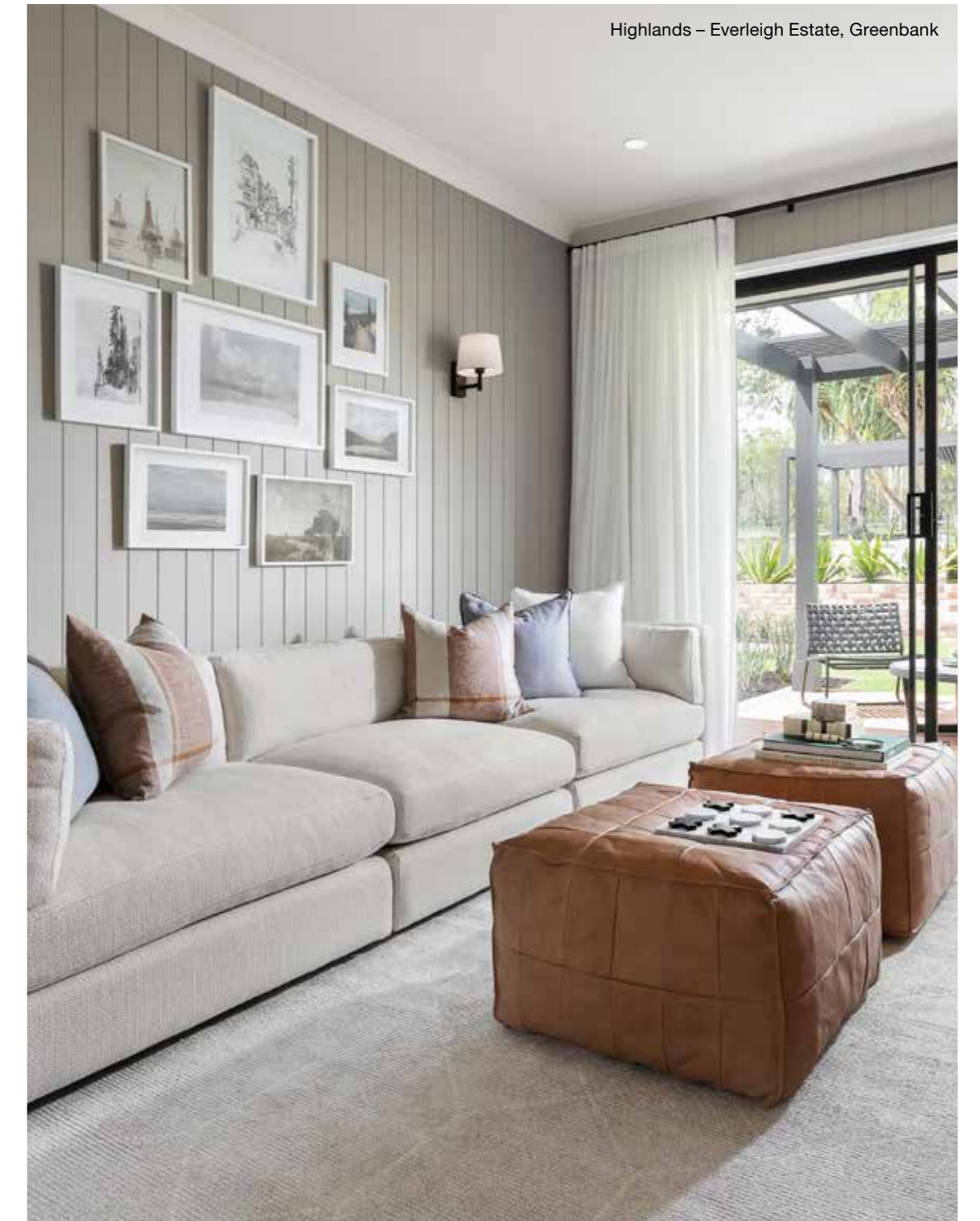
Most popular

# Winton 255N

5 | 3 | 2 | 2



|                |                                |
|----------------|--------------------------------|
| Master Bed     | 4690 x 3620                    |
| Bed 2          | 3000 x 3020                    |
| Bed 3          | 3000 x 3020                    |
| Bed 4          | 3000 x 3000                    |
| Study / Bed 5  | 3000 x 3000                    |
| Activity       | 3430 x 3550                    |
| Dining         | 3960 x 3200                    |
| Family         | 4530 x 4550                    |
| Lounge / Media | 4250 x 3950                    |
| Outdoor        | 3000 x 6460                    |
| House Length   | 12.35m                         |
| House Width    | 29.13m                         |
| House Area     | 255.60m <sup>2</sup> (27.51sq) |



# Winton Facades

East Hamptons



Hamptons



Mornington



Designer





Highlands – Everleigh Estate, Greenbank

## COLORBOND® Roof & TRUECORE® Steel Frame

*NOW INCLUDED\* for a limited time!*

Build a strong and stable family home that stands the test of time with a frame made from TRUECORE® steel and a roof made from COLORBOND® steel.

**Colorbond® | Truecore®**

### Benefits of using a frame made from TRUECORE® steel:

- ✓ Straight and True. It won't shrink, twist or warp over time.
- ✓ Enhanced corrosion-resistant. ACTIVATE@ technology
- ✓ 100% termite and borer proof.
- ✓ Won't catch on fire.

### Benefits of using a roof made from COLORBOND® steel:

- ✓ Strong, beautiful and durable, COLORBOND® steel is tried and tested in Australian conditions.
- ✓ 'Mix and match' colours with your gutter & fascia made from COLORBOND® steel.
- ✓ Termite and fire resistant.
- ✓ 100% recyclable.
- ✓ Easy to maintain.

COLORBOND® steel & TRUECORE® steel frame now included with Acreage homes applies to all price list regions. \*Coral Homes reserves the right to substitute the steel house frame with termite-treated timber at its absolute discretion where supply or installation is delayed. For homes located within close proximity of surf or exposed marine influences where a steel frame is not eligible for a 50-year manufacturer's warranty – termite treated timber framing will be utilised. A roof made from COLORBOND® steel & frame made from TRUECORE® steel inclusion is subject to change without notice. Photography from Highlands at Everleigh Estate, Greenbank depicts non-standard facade items including feature stone, brick, timber cladding, render finish, upgraded 2340mm entry door and sidelight window, stained entry door frame, upgraded windows, window furnishings, french doors, timber finish on garage door, feature lighting, raked ceiling, ceiling height, built-in cabinetry and other items which Coral Homes may not offer or are subject to additional charge. Items such as homewares, furniture, timber pergola, brick feature wall, paved path and concrete driveway, landscaping and fencing are not supplied by Coral Homes. Speak with your New Home Consultant for more details. TRUECORE® and COLORBOND® are registered trademarks of BlueScope Steel Limited (ABN 16 000 011 058). All rights reserved.

Highlands – Everleigh Estate, Greenbank



Photography from Highlands at Everleigh Estate, Greenbank depicts non-standard items including upgraded porcelain tiling, upgraded rangehood including feature shelf and rangehood enclosure, black tapware, undermount sink, feature tiling, upgraded island benchtop with feature posts and shadowline projection, upgraded Caesarstone®, cabinetry profiles, finishes and handles, built-in cabinetry, feature stone and fireplace, upgraded windows, stacker doors and handles, feature lighting, raked and square set ceiling, ceiling height and other items which Coral Homes may not offer or are subject to additional charge. Items such as homewares, furniture, outdoor concrete, timber-look decking, outdoor paving, retaining walls, landscaping and fencing are not supplied by Coral Homes. Speak with your New Home Consultant for more details.

# Why Coral Homes?

Our foundation is built on transparency, trust and exceptional customer service. Having built over 27,000 homes across three decades, our customers receive a fixed price guarantee, independent quality checks and so much more.



## 35+ Years Experience

Providing a high level of quality, value for money, security and transparency, is why we are one of Australia's largest home builders today.



## Fixed Price Guarantee

We understand the financial commitments around building a home and provide you with peace of mind by offering contracts with a Fixed Price Guarantee\* upfront.



## Independent Quality Inspections

We have a stringent seven step Quality Assurance process to ensure we build each and every home to a high quality. This process includes an independent quality inspection.



## Award-Winning Home Builder

We're a proud two-time winner of the HIA Professional Major Builder Award, the industry's most prestigious award. We are also honoured to be named ProductReview winners for customer satisfaction for 2021, 2022 & 2024.

# CORAL HOMES

\*The fixed price guarantee is in respect to the cost of construction of your house and associated site works in accordance with the specifications of your contract. Coral Homes reserves the right to vary, terminate or suspend the operation of the Fixed Price Guarantee offer in its absolute discretion, without notice.