

CORAL HOMES

— Classic Series —

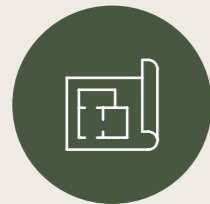


INCLUSIONS GUIDE

CORAL HOMES

Classic Series

Discover the Coral Homes Classic Series – a simplified, express start building process with no guesswork, just great choices!



1. Choose your home design

Our talented team of interior designers and building experts have carefully packaged together a selection of stunning facades, thoughtfully pre-drawn floorplans, on trend colour selections and quality appliances to make your home build process quick, seamless and stress free. Simply choose what reflects your style from our concise, pre-set options, and we'll handle the rest.



2. Get a free quote instantly

Eager to get started? Provide us with your land details, and our friendly New Home Consultants will offer a free siting and fixed-price quote. Don't have land yet? We can help find the perfect house and land package just for you.



3. Secure a fixed price contract

For a small non-refundable \$1,500* preliminary fee, we'll prepare a detailed fixed-price contract, including your colour and electrical selections, as well as soil tests and surveys for your new home, giving you complete transparency on costs.



4. Kickstart the process

Once you receive your fixed-price contract, we'll walk you through it – either online or in person at our Head Office. Simply sign and pay a reduced contract deposit*, and we'll finalise your house plans and lodge all the necessary building approvals.



5. Watch your new home come to life

After we receive all necessary approvals, finance authority from your lender, and the remaining deposit, construction of your Coral Home will begin! You'll make progress payments along the way but rest assured – your dedicated Coral Homes Customer Service Representative will guide you through the entire process.

Move in and enjoy!

*Should 'as constructed' sewer and/or stormwater information not be available for your chosen block of land, an additional \$1,000 preliminary agreement fee payment will be required to obtain a Service Protection Report, providing the builder 'as constructed' information. *Reduced contract deposit amount is \$5,000 for Queensland and \$9,000 for New South Wales. For full terms and conditions see coralhomes.com.au/terms-conditions/

Classic EXTERIOR COLOUR SCHEMES

With a range of options, you can easily find the look that best suits your vision for your new home's external colours. Whether you're drawn to refined coastal tones, elegant neutrals, bold contrasts, or fresh, natural hues, our selections are designed to offer a cohesive and stylish look. No matter your preference, you can confidently choose a finish that enhances the character of your home, with minimal effort required.



ALPINE



TWILIGHT



HORIZON



MAGNOLIA



HARBOUR

Photography depicts non-standard items including driveway, paving, window treatment and more which are not included in the price of homes with Classic Inclusions. Other items such as homewares, furniture, landscaping and fencing are not supplied by Coral Homes.

Classic FLOORPLAN OPTIONS

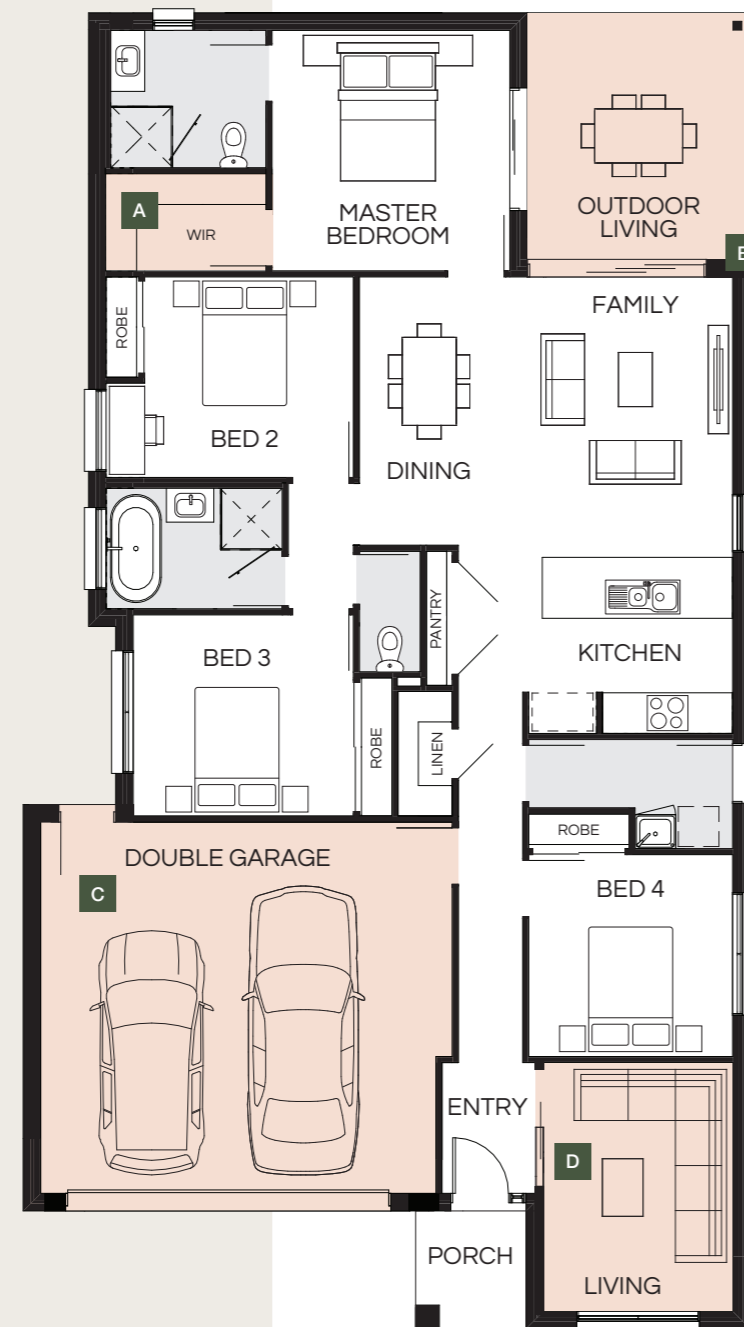
The Classic Series by Coral Homes offers a streamlined building experience with carefully pre-selected options. But for those looking to add a personal touch and elevate their home a little more, a selection of options are available.

These options consist of luxuries such as: raked ceilings in the family, dining, and kitchen areas that add an expansive touch to your home, indoor-outdoor connection with a grand alfresco space, corner stacker doors and elegant double-hinged doors to create a more open, seamless flow throughout your home + more!

Our floorplan options are design specific to enhance your home, providing flexibility and customisation to suit your lifestyle. Explore our website to confirm what's available for your selected home design.

LINDEN OPTIONS*:

- A. Hinged door to Walk-in robe
- B. Stacker to outdoor living
- C. Extended garage with hinged door
- D. Sliding door to living



Classic INTERIOR COLOUR SCHEMES

Our internal colour schemes offer a range of stylish options that blend timeless design with modern aesthetics. Each option has been carefully curated to reflect different moods and preferences, ensuring that no matter which palette you choose, it will seamlessly complement the character of your new home.



RUSTIC



OASIS



TIDE



URBAN



DRIFT

*Floorplan shown is the Linden 184N. Floorplan is indicative only, conceptual in nature and subject to change without notice. Floorplan may depict features and/or other products which are not included in the house design, not included in the house price and/or not available from Coral Homes. All options depicted are design specific and may not be available on all Classic Series homes. For more information please see our website or speak with a Coral Homes New Home Consultant. © Coral Homes Pty Ltd.

Photography depicts non-standard items. Kitchen images depict both the Kitchen Upgrade and Kitchen Appliance Upgrade Packs with upgrades to Caesarstone® benchtops, tiling, overhead cabinetry, rangehood, overhead cupboards, waterfall-look island bench gable ends, 900mm appliances and more which are not included in the price of homes with Classic Inclusions. Upgrade Packs are available at an additional cost. Other items such as homewares, furniture, landscaping and refrigerator are not supplied by Coral Homes.

Classic INCLUSIONS



Scan

to view our full
Classic Series
Inclusions Guide

Kitchen

- ✓ 900mm wide island benchtop featuring a 32mm laminate surface with a square edge profile
- ✓ 700mm high splashback to the kitchen cooktop bench with 250mm x 400mm tiles
- ✓ Phoenix Arlo sink mixer with Clark Punch stainless steel 1.75 bowl inset sink
- ✓ The Phoenix Arlo gooseneck sink mixer in chrome
- ✓ Clark Punch stainless steel 1.75 bowl inset sink
- ✓ Laminate base cabinetry featuring one bank of four cutlery drawers and standard cabinet doors for the remaining sections
- ✓ Handles to drawers and doors beneath benches from our Classic Internal Colour Schemes
- ✓ Provision for under bench microwave space with pot drawer and provision for dishwasher (*not fully-lined – design specific*)
- ✓ 2040mm hinged flush panel door (*home specific*)
- ✓ Four 450mm white melamine shelves
- ✓ Technika 600mm stainless steel canopy rangehood
- ✓ Technika 600mm stainless steel oven
- ✓ Technika 600mm ceramic glass cooktop

Bathroom & Ensuite

- ✓ 32mm laminate benchtop with a square edge profile
- ✓ Custom-designed floor-mounted vanity cabinets with recessed kicks featuring laminate finish cupboard doors
- ✓ Handles from to drawers and doors beneath benches from our Classic Internal Colour Schemes
- ✓ 900mm high frameless polished edge mirrors to vanity units
- ✓ Caroma Luna inset basin with taphole and a sleek chrome pop-up waste, and Phoenix Arlo hob-mounted basin mixer (*chrome*)
- ✓ Freestanding bath with overflow and chrome waste with plug
- ✓ Phoenix Arlo bath wall mixer
- ✓ Mizu Drift shower rail in chrome
- ✓ Phoenix Arlo shower wall mixer
- ✓ Fully framed shower screens with silver frame colour and pivot action door
- ✓ Phoenix Radii round chrome toilet roll holders and 600mm double towel rail
- ✓ Posh Solus round close coupled toilet suite
- ✓ Ceramic floor tiling with 150mm high skirting tile (*nominal*), vanity splashback and 2100mm high shower from our Classic Internal Colour Schemes.

Powder Room

- ✓ Laminated top with drop front vanity
- ✓ Phoenix Arlo hob-mounted basin mixer (*chrome*)
- ✓ Caroma Luna inset basin with taphole and chrome pop up waste
- ✓ Frameless 900mm high, polished edge mirrors to full width of vanity
- ✓ Posh Solus round close coupled toilet suite and Phoenix Radii round chrome toilet roll holder

Laundry

- ✓ Base laundry cabinet with 45 litre stainless steel tub and chrome mixer tap.
- ✓ 820mm x 2040mm painted clear half glass door with double cylinder deadlock or a clear glass sliding door (*home specific*)
- ✓ Ceramic tiling to floor with 150mm skirting tile (*nominal*) and 300mm high to laundry cabinet splashback from our Classic Internal Colour Schemes.

Internal

- ✓ 2400mm high ceilings to single storey and double storey homes
- ✓ Classic 90mm cove stylecornices are provided standard throughout home
- ✓ Skirtings and architraves to be single bevel profile (*excluding laundry / bathroom / ensuites / powder rooms*)
- ✓ Staircase with timber handrail and carpet grade treads and risers (*double storey homes*)
- ✓ Four melamine shelves for increased storage. 2100mm high framed vinyl sliding door or 2040mm hinged door to linen cupboards (*home specific*)
- ✓ Melamine shelf to broom cupboards with 2040mm high hinged door with chrome dummy lever door handle (*home specific*)
- ✓ Melamine shelf to walk-in robes with chrome hanging rail (*home specific*)
- ✓ Powder coated aluminium windows with keyed locks
- ✓ Professional 3-coat paint system to internal walls with 2-coat paint system to ceilings and cornice
- ✓ 3-coat gloss aquanamel paint to interior mouldings and doors
- ✓ Providing premium 'Aquanamel' paint with non-yellowing protection to everyday surfaces

- ✓ Powder coated aluminium sliding and stacker doors (*home specific*)
- ✓ Weather seals to all aluminium windows and draft seals to external hinged doors including front entry door (*excluding sectional garage door*)
- ✓ 2040mm Flush Panel internal doors
- ✓ Gainsborough 'G4 Series' satin chrome Liana lever door handles
- ✓ Privacy locks included to ensuites, bathrooms and toilet doors

External

- ✓ Hume XN5 2040mm x 820mm clear glazed front entry door and rebated entry frame in paint finish
- ✓ Gainsborough double cylinder Satin Chrome 'Angular' Trilock entry set
- ✓ All external hinged timber doors will be fitted with a Gainsborough double cylinder deadlock and stainless steel 'Governor' knob (*excluding front entry door*) with locks keyed alike.
- ✓ Garage door to be a steel sectional garage door with textured finish, auto control and two (2) remotes and one (1) wall button for double garage (*design specific*)
- ✓ Steel roofing, fascia and gutters

- ✓ Added street appeal with a 25° roof pitch (*home specific*) and 450mm eaves (*home specific*)
- ✓ Round PVC painted downpipes
- ✓ 2400mm x 1500mm wall mounted powder coated clothesline with 12 lines (*region specific*)
- ✓ 3000L round steel rainwater tank (*region specific*)

Electrical

- ✓ One Beacon Aria 132cm white ceiling fan/light with a speed controller to each bedroom and fan and/or fan/light to selected living areas(*design specific*)
- ✓ One TV point for single storey homes and two TV points for double storey homes
- ✓ Downlights to main living area (*home specific*)
- ✓ Smoke detectors where required
- ✓ Exhaust fans where required (*home specific*)
- ✓ Earth leakage circuit breakers
- ✓ Provision for NBN communication equipment within the garage (*region specific*)

Photography depicts non-standard items including porcelain floor tiling, Caesarstone® benchtops, feature lighting, built-in cabinetry, rangehood, corner stacker doors and more which are not included in the price of homes with Classic Standard Inclusions. Other items such as homewares, furniture, landscaping and fencing are not supplied by Coral Homes.

Why Coral Homes?

Our foundation is built on transparency, trust and exceptional customer service. Having built over 27,000 homes across three decades, our customers receive a fixed price guarantee, independent quality checks and so much more.



35+ Years Experience

Providing a high level of quality, value for money, security and transparency, is why we are one of Australia's largest home builders today.



Fixed Price Guarantee

We understand the financial commitments around building a home and provide you with peace of mind by offering contracts with a Fixed Price Guarantee* upfront.



Independent Quality Inspections

We have a stringent seven step Quality Assurance process to ensure we build each and every home to a high quality. This process includes an independent quality inspection.



Award-Winning Home Builder

We're a proud two-time winner of the HIA Professional Major Builder Award, the industry's most prestigious award. We are also honoured to be named ProductReview winners for customer satisfaction for 2021, 2022 & 2024.

CORAL HOMES

coralhomes.com.au

*The fixed price guarantee is in respect to the cost of construction of your house and associated site works in accordance with the specifications of your contract. Coral Homes reserves the right to vary, terminate or suspend the operation of the Fixed Price Guarantee offer in its absolute discretion, without notice. The copyright in the floorplans and facades depicted in this brochure are owned by or licensed to Coral Homes Pty Ltd and may not be reproduced, copied or dealt with in any manner which infringes the exclusive rights of Coral Homes Pty Ltd as prescribed by the Copyright Act 1968 without the express written authorisation of Coral Homes Pty Ltd. Coral Homes Qld Pty Ltd QBCC 1014053. Coral Homes Pty Ltd QBCC 50792, NSW OFT 62084C.