

# CORAL HOMES

Double Storey

Queensland



Sacramento – Springfield Rise, Spring Mountain



Photography depicts items such as homewares, furniture, finishes, landscaping and fencing and may depict items that are upgraded or not supplied by Coral Homes. Speak with your New Home Consultant for more details.

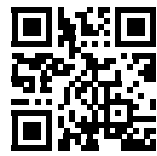
Sacramento – Springfield Rise, Spring Mountain



# Welcome

Browse through our collection of double storey homes to find your dream design.  
Each spacious floorplan is available in multiple facades to suit your style.  
To discover our full range of homes, visit [coralhomes.com.au](https://coralhomes.com.au)

*Discover our designs*



Photography throughout this guide depicts items such as homewares, furniture, landscaping, fencing and may depict items that are upgraded or not supplied by Coral Homes. Floorplans throughout this guide are indicative only, conceptual in nature and subject to change. Floorplans may depict features and/or other products which are not included in the house design, not included in the house price and/or not available from Coral Homes. External colours (walls, roof and window/doors) shown in this guide are indicative only, Coral Homes recommend the use of light external colours to minimise costs associated with Energy Efficiency compliance. © Coral Homes Pty Ltd. The copyright in the floorplans and facades depicted in this brochure are owned by or licensed to Coral Homes Pty Ltd and may not be reproduced, copied or dealt with in any manner which infringes the exclusive rights of Coral Homes Pty Ltd as prescribed by the Copyright Act 1968 without the express written authorisation of Coral Homes Pty Ltd. Coral Homes Pty Ltd QBCC 50792, NSW OFT 62084C, Coral Homes Qld Pty Ltd QBCC 1014053.









Atlanta – SkyRidge, Worongary

# Double Storey Collection – QLD

We've got a home design to suit your block of land and lifestyle.  
Discover the range.

Lot Width	Home Design					Page
12.5m+	Ashmont 259Q	4	3	2.5	2	5
12.5m+	Ashmont 281Q	4	3	2.5	2	6
12.5m+	Ashmont 316Q	5	3	3	2	7
12.5m+	Atlanta 339Q	5	3	3.5	2	10
12.5m+	Atlanta 347Q	5	3	3.5	2	11
12.5m+	Atlanta 353Q	5	3	3.5	2	12
12.5m+	Atlanta 354Q	5	4	3.5	2	13
12.5m+	Atlanta 362Q	5	4	3.5	2	14
12.5m+	Atlanta 363Q	5	3	3.5	2	16
12.5m+	Atlanta 369Q	5	4	3.5	2	17
12.5m+	Atlanta 380Q	5	4	3.5	2	18
13.5m+	Atlanta 400Q	5	4	3.5	2	19
13.5m+	Atlanta 419Q	5	4	3.5	2	20
14m+	Atlanta 443Q	5	4	3.5	2	22
14.5m+	Atlanta 474Q	5	4	5.5	2	23
10m+	Baltimore 224Q	4	2	3	2	30
10m+	Baltimore 239Q	4	2	3	2	31
10m+	Baltimore 274Q	4	3	3	2	33
10m+	Baltimore 296Q	5	3	3	2	34
12m+	Baltimore 302Q	4	3	3	2	38
12m+	Baltimore 331Q	5	3	3	2	40
12m+	Baltimore 356Q	5	3	3	2	42
12.5m+	Bentley 300Q	4	3	3.5	2	49
13m+	Bentley 329Q	4	3	3.5	2	50
13m+	Bentley 356Q	4	3	3.5	2	53
13.5m+	Bentley 383Q	4	3	3.5	2	54
13.5m+	Bentley 406Q	5	3	3.5	2	55

Lot Width	Home Design					Page
12m+	Boston 297Q	4	3	3.5	2	62
12.5m+	Boston 307Q	5	3	3.5	2	63
12m+	Boston 308Q	6	3	3.5	2	65
12.5m+	Boston 326Q	5	3	3.5	2	66
12.5m+	Boston 327Q	5	3	3.5	2	67
13m+	Boston 354Q	5	3	3.5	2	68
13.5m+	Boston 374Q	5	3	4	2	70
14m+	Boston 393Q	4	3	3.5	2	71
12m+	Monash 236Q	4	2	3	2	78
12m+	Monash 259Q	4	3	3	2	79
12m+	Monash 273Q	4	3	3	2	81
12.5m+	Monash 279Q	4	3	3	2	82
13m+	Monash 280Q	4	3	3	2	83
12m+	Monash 294Q	5	3	3	2	84
13.5m+	Monash 299Q	4	3	3	2	86
13m+	Monash 311Q	5	4	3	2	87
13m+	Monash 315Q	6	3	3	2	89
13.5m+	Monash 321Q	5	3	3.5	2	90
13.5m+	Monash 334Q	5	3	3.5	2	91
10m+	Rochester 265Q	5	2	3	2	96
10m+	Rochester 276Q	4	3	3	2	97
10m+	Rochester 288Q	5	2	3	2	98
10m+	Rochester 304Q	4	3	3	2	99
10m+	Sacramento 215Q	4	1	2.5	2	106
10m+	Sacramento 221Q	4	1	2.5	2	107
10m+	Sacramento 231Q	4	2	2.5	2	109
10m+	Sacramento 241Q	4	2	2.5	2	110
10m+	Sacramento 263Q	5	2	3	2	111
10m+	Sacramento 278Q	4	3	3	2	112
10m+	Sacramento 301Q	4	3	3.5	2	113
10m+	Sacramento 318Q	4	3	3.5	2	115
10m+	Sacramento 326Q	4	3	3.5	2	116

Photography depicts items such as homewares, furniture, finishes, landscaping and fencing and may depict items that are upgraded or not supplied by Coral Homes. Speak with your New Home Consultant for more details.



# Ashmont Series

The Ashmont Series is a collection of spacious double storey designs, where the open-plan kitchen, dining, and family room seamlessly connect to the outdoor living area, creating a sense of expansive living. With multiple living areas throughout, the Ashmont Series offers flexibility, making it the perfect choice for those who value both style and functionality.

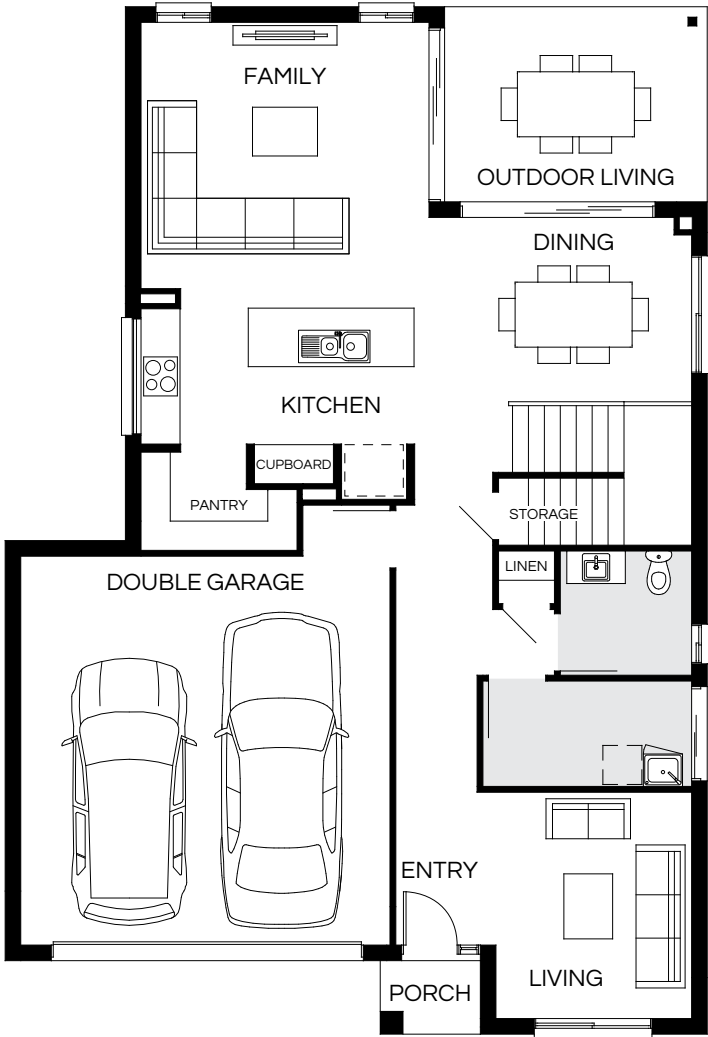


Scan to view series



4 | 3 | 2.5 | 2

# Ashmont 259Q







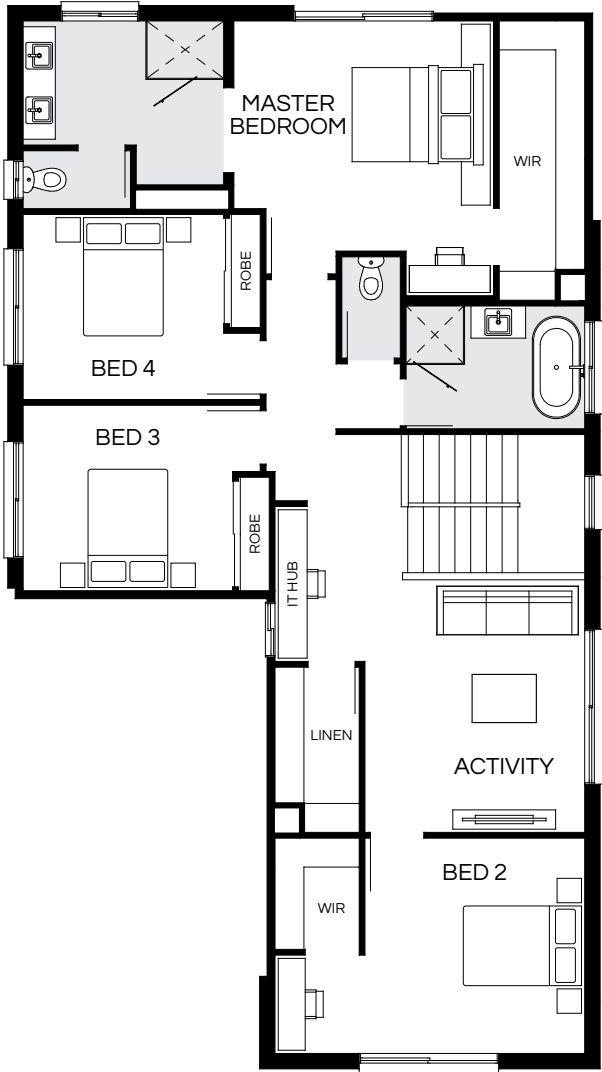
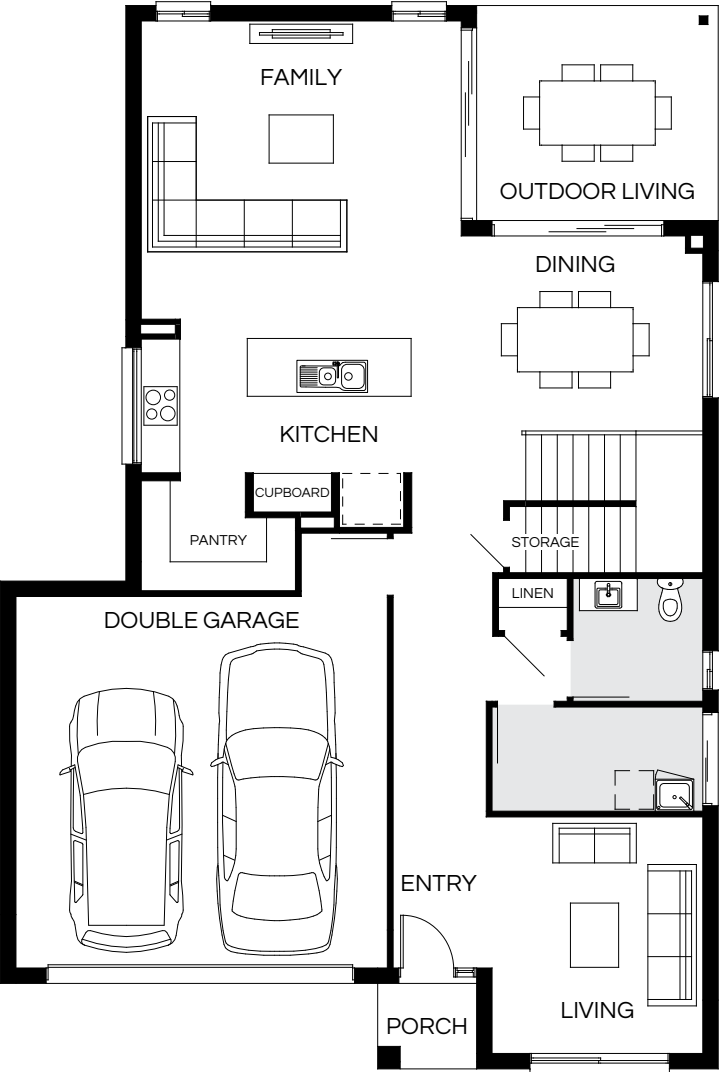
Master Bed	3750 x 3700	Activity	3800 x 3320	Outdoor	3000 x 4040	Lower Area	148.93m²
Bed 2	3320 x 3170	Dining	2890 x 4040	House Length	15.80m	Upper Area	110.46m²
Bed 3	2900 x 2950	Family	4405 x 4450	House Width	10.80m	House Area	259.39m² (27.92sq)
Bed 4	2900 x 3300	Living	3500 x 3030			Lot width	12.5m+

Floorplan and lot width based on Designer facade. Floorplan is indicative only, conceptual in nature and subject to change without notice. Floorplan may depict features and/or other products which are not included in the house design, not included in the house price and/or not available from Coral Homes. All measurements are in millimetres unless otherwise stated. Floorplan measurements are approximate and are not to scale. Lot width is a guide only and may change due to developer covenants and Local Authority guidelines. For more information speak to your Coral Homes New Home Consultant. © Coral Homes Pty Ltd.



# Ashmont 281Q

4  | 3  | 2.5  | 2 

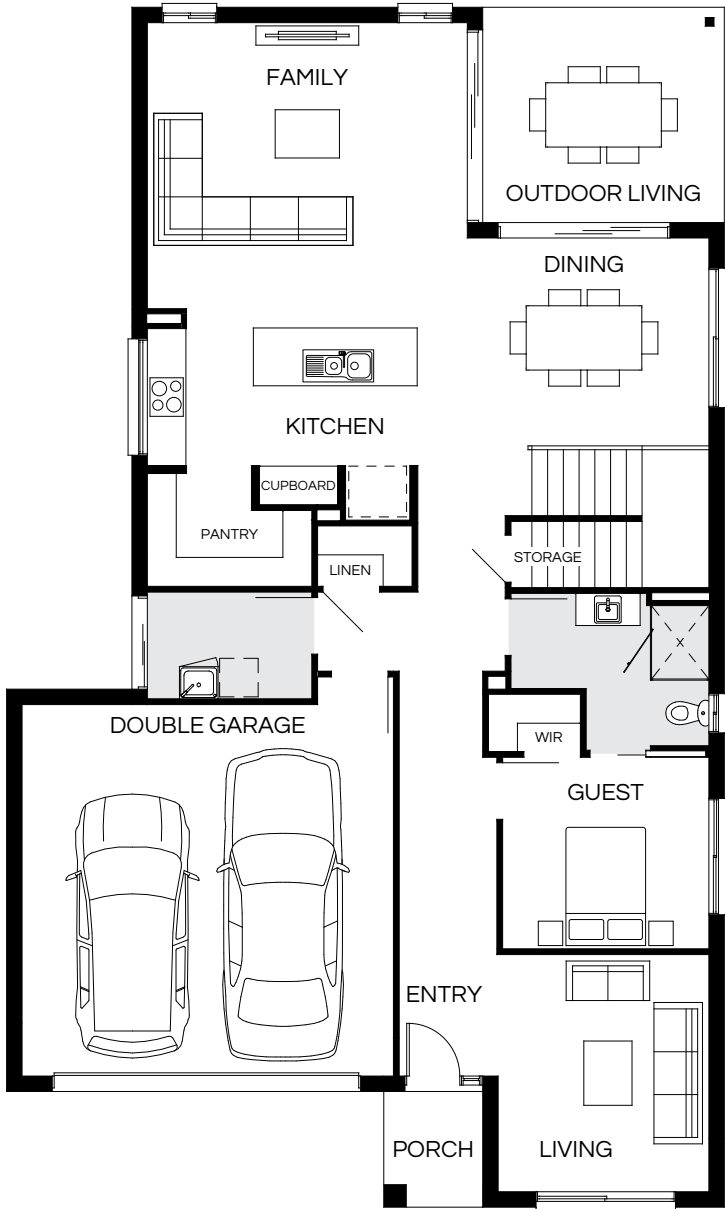


Master Bed	3600 x 4060	Activity	3950 x 3440	Outdoor	3345 x 3760	Lower Area	159.54m²
Bed 2	3370 x 3440	Dining	3090 x 3760	House Length	16.545m	Upper Area	121.62m²
Bed 3	2905 x 3280	Family	4950 x 5000	House Width	11.17m	House Area	281.16m² (30.26sq)
Bed 4	2900 x 3140	Living	3700 x 3300			Lot width	12.5m+

Floorplan and lot width based on Designer facade. Floorplan is indicative only, conceptual in nature and subject to change without notice. Floorplan may depict features and/or other products which are not included in the house design, not included in the house price and/or not available from Coral Homes. All measurements are in millimetres unless otherwise stated. Floorplan measurements are approximate and are not to scale. Lot width is a guide only and may change due to developer covenants and Local Authority guidelines. For more information speak to your Coral Homes New Home Consultant. © Coral Homes Pty Ltd.

# Ashmont 316Q

5  | 3  | 3  | 2 



Master Bed	3990 x 4840	Guest	3000 x 3230	Living	3710 x 3300	Lower Area	177.30m²
Bed 2	3420 x 3300	Activity	3460 x 4370	Outdoor	3350 x 3760	Upper Area	139.37m²
Bed 3	3420 x 3000	Dining	3290 x 3760	House Length	18.67m	House Area	316.67m² (34.09sq)
Bed 4	3020 x 3200	Family	4760 x 5000	House Width	11.17m	Lot width	12.5m+

Floorplan and lot width based on Designer facade. Floorplan is indicative only, conceptual in nature and subject to change without notice. Floorplan may depict features and/or other products which are not included in the house design, not included in the house price and/or not available from Coral Homes. All measurements are in millimetres unless otherwise stated. Floorplan measurements are approximate and are not to scale. Lot width is a guide only and may change due to developer covenants and Local Authority guidelines. For more information speak to your Coral Homes New Home Consultant. © Coral Homes Pty Ltd.



# Atlanta Series

Looking for the contemporary home of your dreams? Cue the Atlanta Series. With a light and airy open-plan layout, the Atlanta design is the essence of a spacious family home, made to suit blocks of 12.5m+. Featuring five bedrooms and four living spaces, the Atlanta effortlessly flows from inside to outside, for easy family living.



Scan to view series

Atlanta – SkyRidge, Worongary



Atlanta (Oakridge Facade) – SkyRidge, Worongary



On  
display

Award  
winner

Atlanta – SkyRidge, Worongary




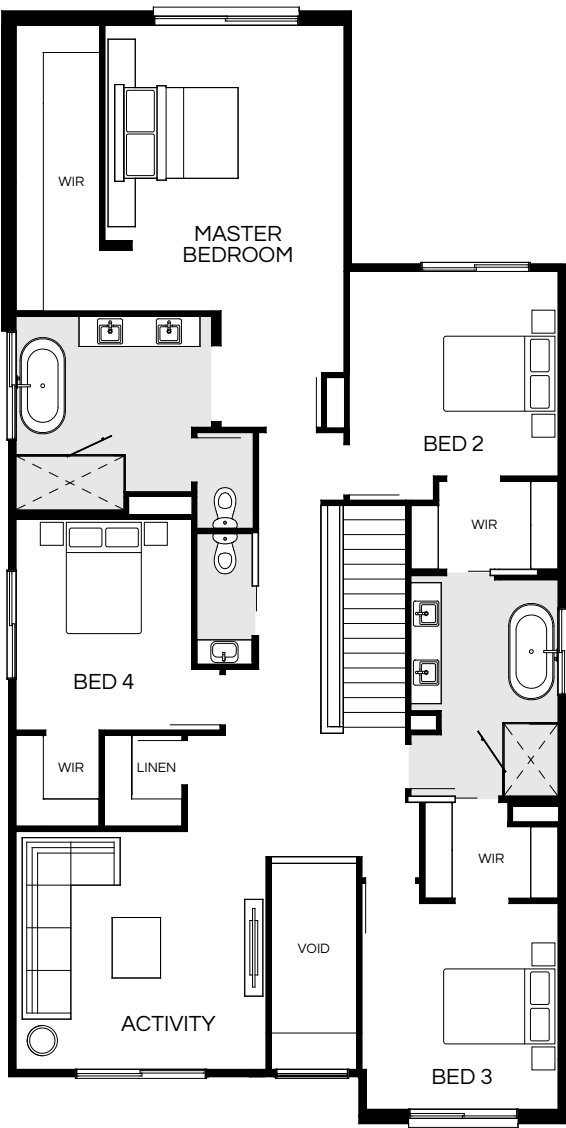
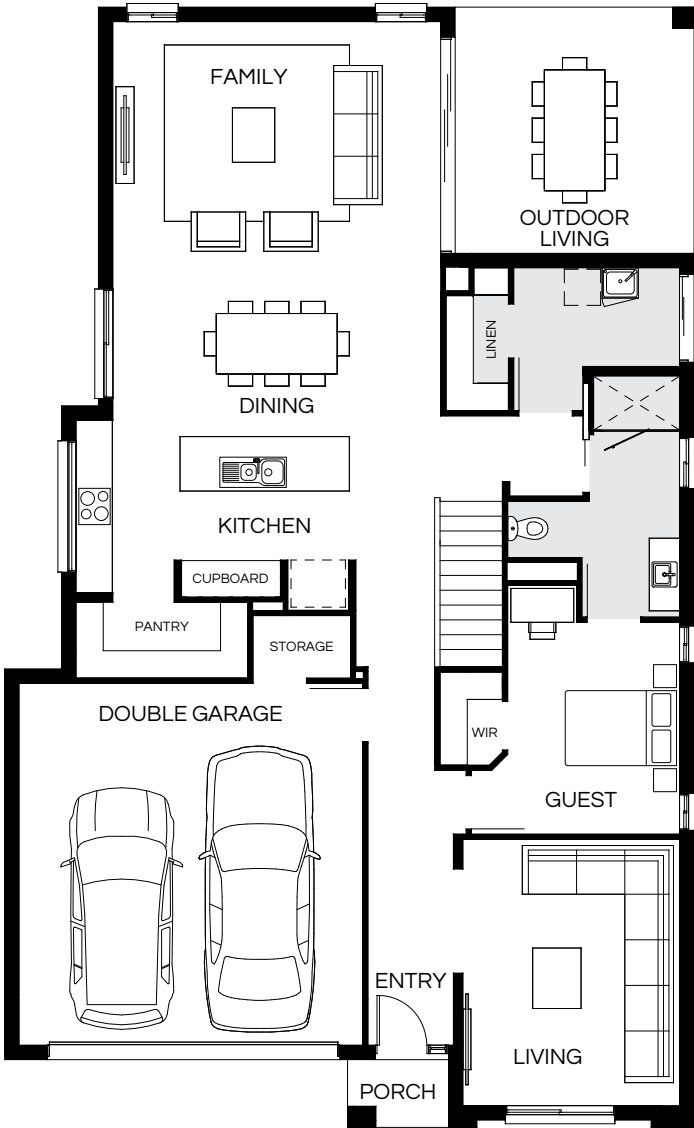
Photography depicts items such as homewares, furniture, finishes, landscaping and fencing and may depict items that are upgraded or not supplied by Coral Homes. Speak with your New Home Consultant for more details.

Photography depicts items such as homewares, furniture, finishes, landscaping and fencing and may depict items that are upgraded or not supplied by Coral Homes. Speak with your New Home Consultant for more details.



# Atlanta 339Q

5  | 3  | 3.5  | 2 

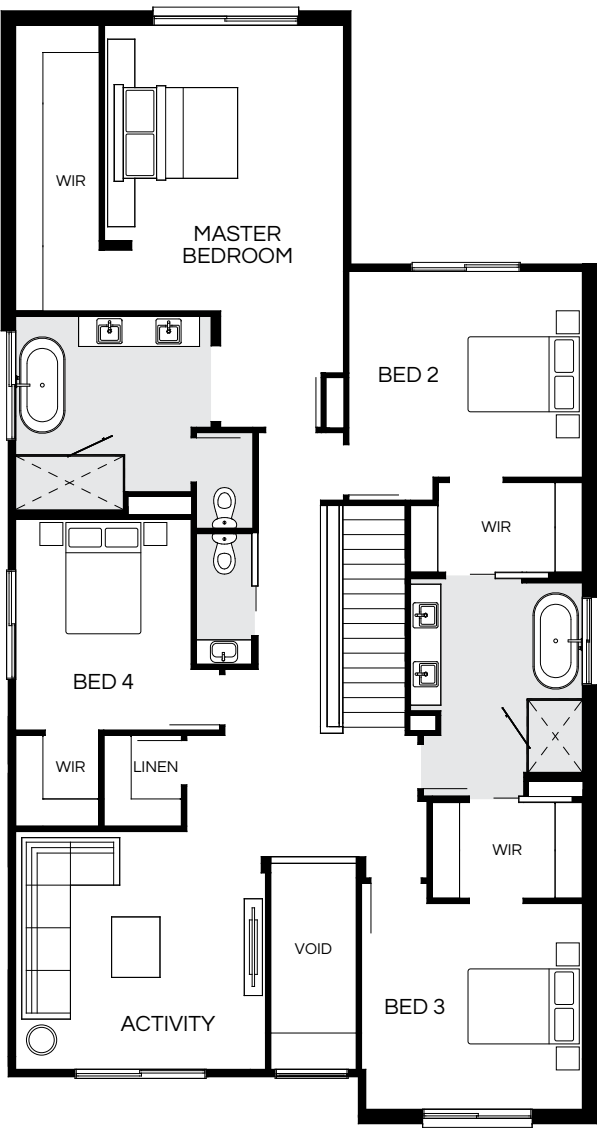
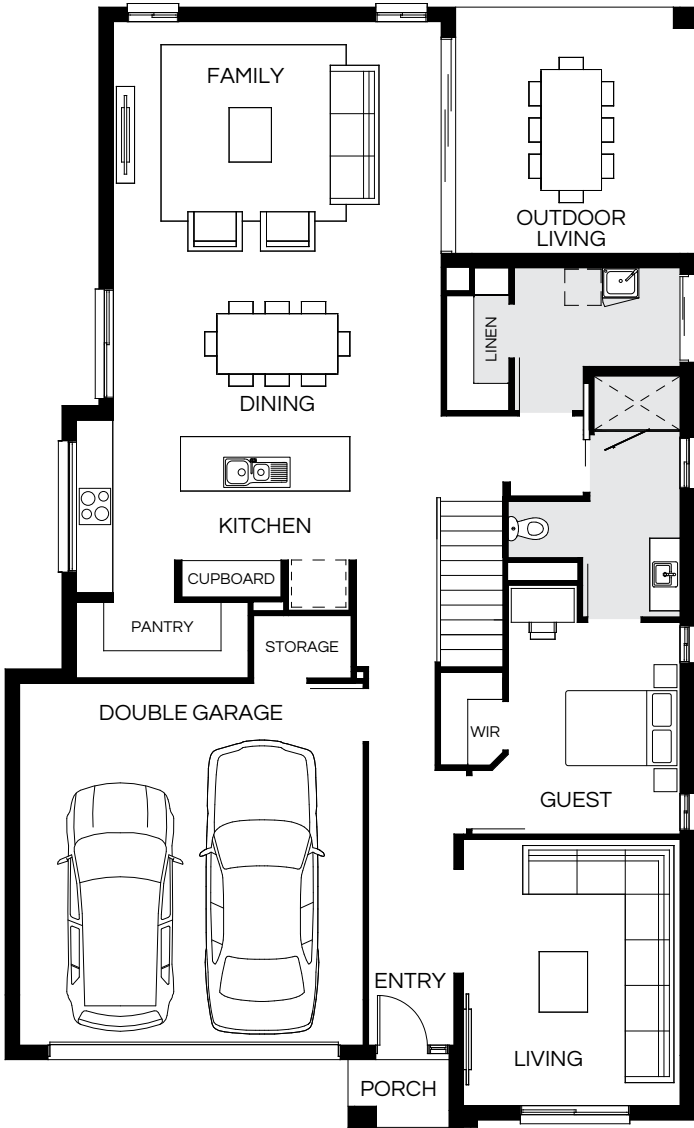


Master Bed	4740 x 3970	Activity	3950 x 4150	House Length	18.52m	Lower Area	190.14m²
Bed 2	3400 x 3470	Dining	2900 x 5440	House Width	11.40m	Upper Area	149.21m²
Bed 3	3420 x 3260	Family	3970 x 5440			House Area	339.35m² (36.53sq)
Bed 4	3500 x 2920	Living	4420 x 3600			Lot width	12.5m+
Guest	3520 x 2860	Outdoor	4070 x 3950				

Floorplan and lot width based on Designer facade. Floorplan is indicative only, conceptual in nature and subject to change without notice. Floorplan may depict features and/or other products which are not included in the house design, not included in the house price and/or not available from Coral Homes. All measurements are in millimetres unless otherwise stated. Floorplan measurements are approximate and are not to scale. Lot width is a guide only and may change due to developer covenants and Local Authority guidelines. For more information speak to your Coral Homes New Home Consultant. © Coral Homes Pty Ltd.

# Atlanta 347Q

5  | 3  | 3.5  | 2 





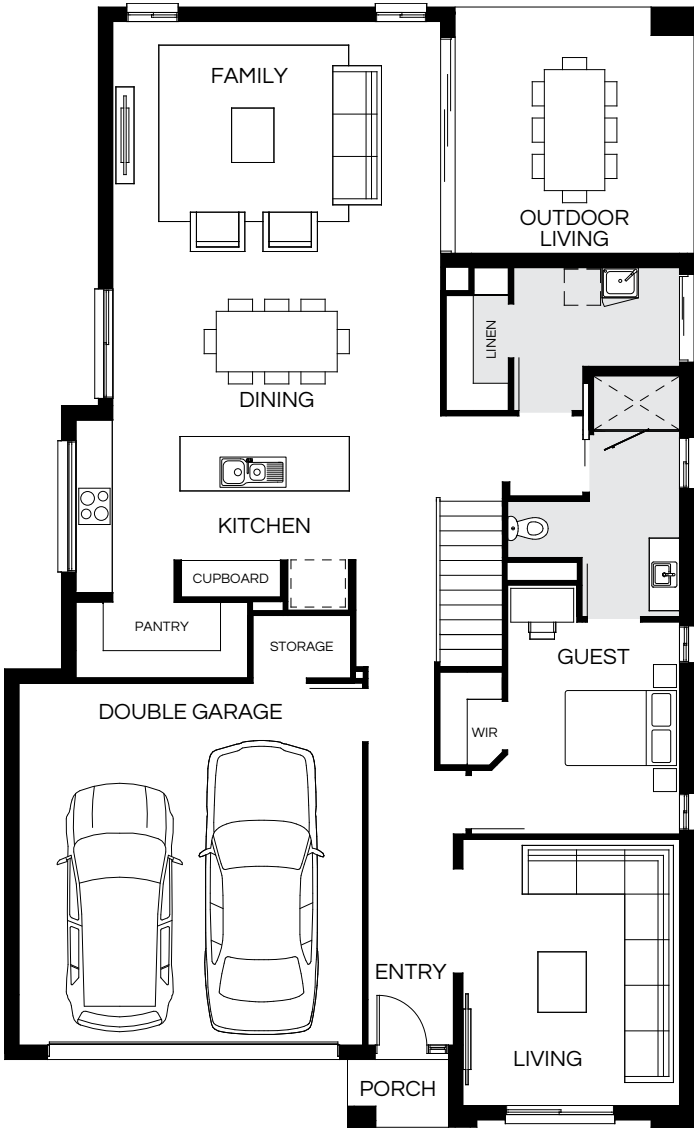
Master Bed	4740 x 3970	Activity	3950 x 4150	House Length	18.52m	Lower Area	190.05m²
Bed 2	3420 x 3880	Dining	2900 x 5440	House Width	11.40m	Upper Area	157.29m²
Bed 3	3420 x 3670	Family	3970 x 5440			House Area	347.34m² (37.39sq)
Bed 4	3500 x 2920	Living	4420 x 3600			Lot width	12.5m+
Guest	3520 x 2860	Outdoor	4070 x 3950				

Floorplan and lot width based on Designer facade. Floorplan is indicative only, conceptual in nature and subject to change without notice. Floorplan may depict features and/or other products which are not included in the house design, not included in the house price and/or not available from Coral Homes. All measurements are in millimetres unless otherwise stated. Floorplan measurements are approximate and are not to scale. Lot width is a guide only and may change due to developer covenants and Local Authority guidelines. For more information speak to your Coral Homes New Home Consultant. © Coral Homes Pty Ltd.



# Atlanta 353Q


5  | 3  | 3.5  | 2 

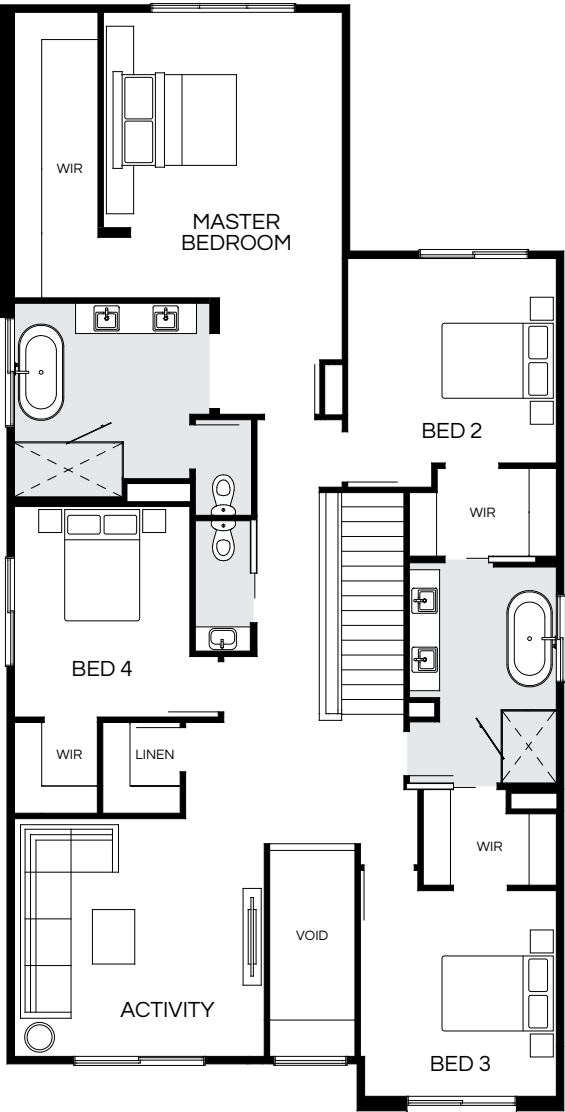
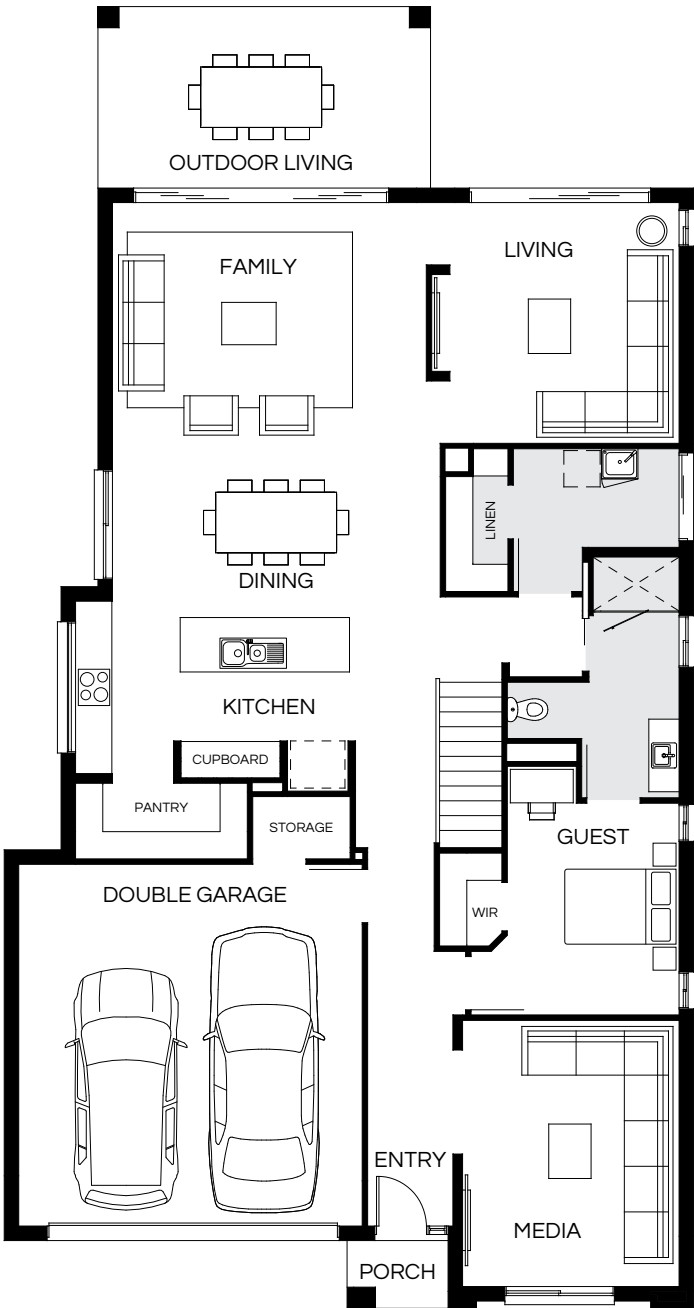


Master Bed	5740 x 3970	Activity	4030 x 4150	House Length	18.52m	Lower Area	190.14m²
Bed 2	3400 x 3470	Dining	2900 x 5440	House Width	11.40m	Upper Area	163.62m²
Bed 3	3420 x 3260	Family	3970 x 5440			House Area	353.76m² (38.08sq)
Bed 4	3430 x 2920	Living	4420 x 3600			Lot width	12.5m+
Guest	3520 x 2860	Outdoor	4070 x 3950				

Floorplan and lot width based on Designer facade. Floorplan is indicative only, conceptual in nature and subject to change without notice. Floorplan may depict features and/or other products which are not included in the house design, not included in the house price and/or not available from Coral Homes. All measurements are in millimetres unless otherwise stated. Floorplan measurements are approximate and are not to scale. Lot width is a guide only and may change due to developer covenants and Local Authority guidelines. For more information speak to your Coral Homes New Home Consultant. © Coral Homes Pty Ltd.

# Atlanta 354Q

5  | 4  | 3.5  | 2 



Master Bed	4740 x 3970	Activity	3950 x 4150	Outdoor	3000 x 5500	Lower Area	206.64m²
Bed 2	3400 x 3470	Dining	2900 x 5440	House Length	21.52m	Upper Area	148.29m²
Bed 3	3420 x 3260	Family	3970 x 5210	House Width	11.40m	House Area	354.93m² (38.21sq)
Bed 4	3500 x 2920	Living	4000 x 3810			Lot width	12.5m+
Guest	3520 x 2860	Media	4420 x 3600				

Floorplan and lot width based on Designer facade. Floorplan is indicative only, conceptual in nature and subject to change without notice. Floorplan may depict features and/or other products which are not included in the house design, not included in the house price and/or not available from Coral Homes. All measurements are in millimetres unless otherwise stated. Floorplan measurements are approximate and are not to scale. Lot width is a guide only and may change due to developer covenants and Local Authority guidelines. For more information speak to your Coral Homes New Home Consultant. © Coral Homes Pty Ltd.



# Atlanta 362Q

5  | 4  | 3.5  | 2 



Master Bed	4840 x 4630	Activity	3880 x 3670	Outdoor	3000 x 5500	Lower Area	206.55m²
Bed 2	3420 x 3920	Dining	2900 x 5440	House Length	21.52m	Upper Area	156.37m²
Bed 3	3930 x 4150	Family	3960 x 5210	House Width	11.40m	House Area	362.92m² (39.07sq)
Bed 4	3400 x 2860	Living	4000 x 3810			Lot width	12.5m*
Guest	3520 x 2860	Media	4420 x 3600				

Floorplan and lot width based on Designer facade. Floorplan is indicative only, conceptual in nature and subject to change without notice. Floorplan may depict features and/or other products which are not included in the house design, not included in the house price and/or not available from Coral Homes. All measurements are in millimetres unless otherwise stated. Floorplan measurements are approximate and are not to scale. Lot width is a guide only and may change due to developer covenants and Local Authority guidelines. For more information speak to your Coral Homes New Home Consultant. © Coral Homes Pty Ltd.

Atlanta – SkyRidge, Worongary




Atlanta – SkyRidge, Worongary

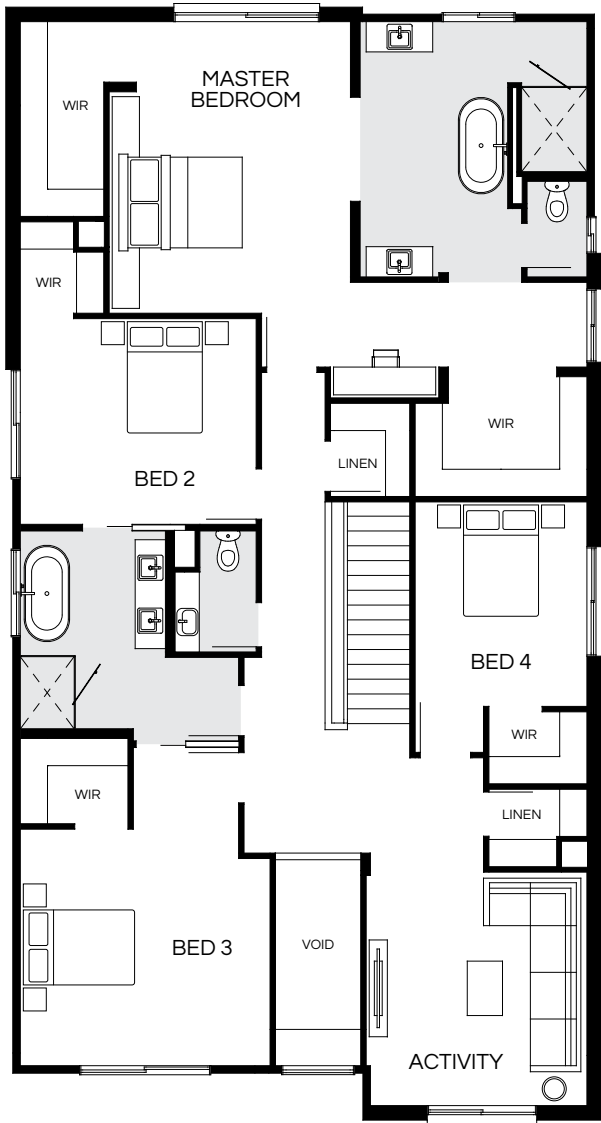
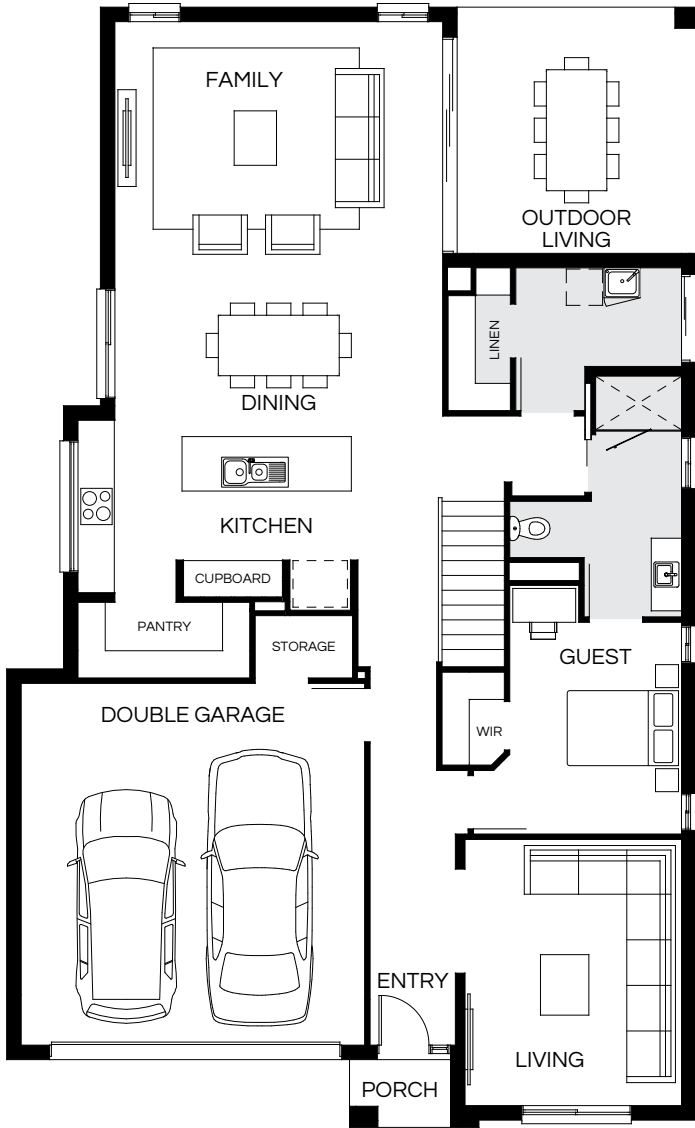


Photography depicts items such as homewares, furniture, finishes, landscaping and fencing and may depict items that are upgraded or not supplied by Coral Homes. Speak with your New Home Consultant for more details.



# Atlanta 363Q



5  | 3  | 3.5  | 2 

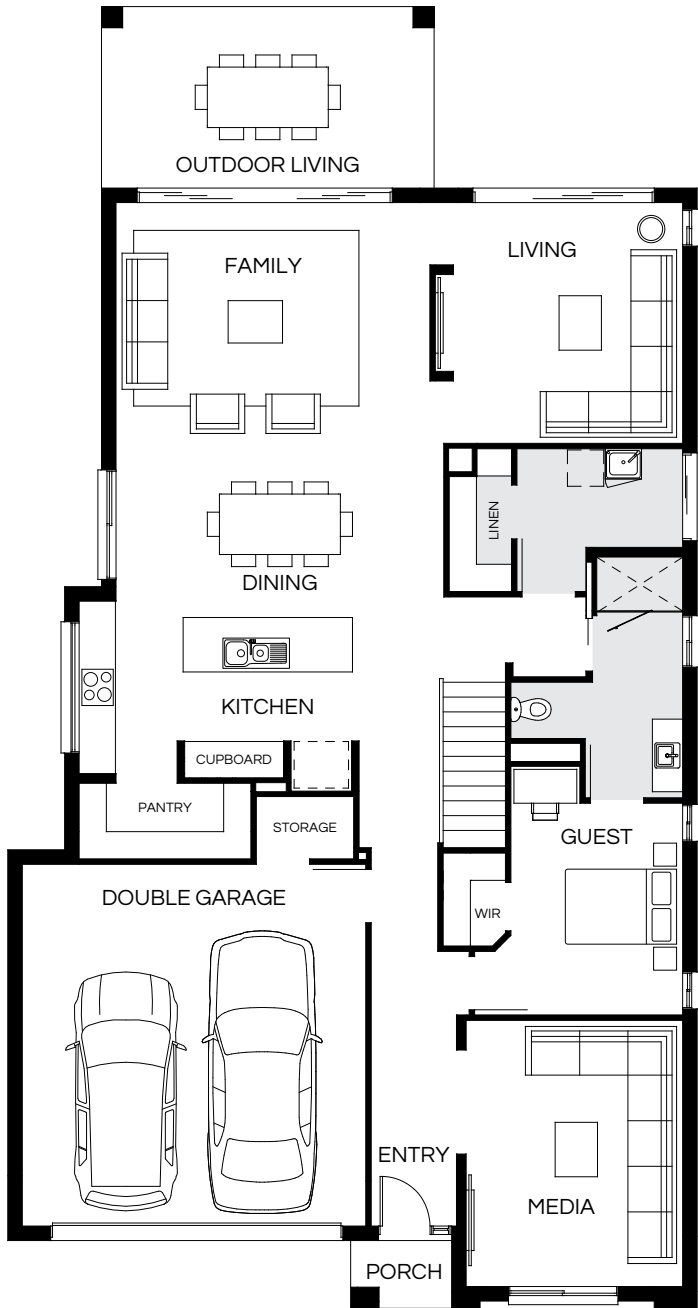


Master Bed	4840 x 4010	Activity	3880 x 3670	House Length	18.52m	Lower Area	190.05m <sup>2</sup>
Bed 2	3420 x 3920	Dining	2900 x 5440	House Width	11.40m	Upper Area	173.38m <sup>2</sup>
Bed 3	3930 x 4150	Family	3970 x 5440			House Area	363.43m <sup>2</sup> (39.12sq)
Bed 4	3400 x 2860	Living	4420 x 3600			Lot width	12.5m <sup>+</sup>
Guest	3520 x 2860	Outdoor	4070 x 3950				

Floorplan and lot width based on Designer facade. Floorplan is indicative only, conceptual in nature and subject to change without notice. Floorplan may depict features and/or other products which are not included in the house design, not included in the house price and/or not available from Coral Homes. All measurements are in millimetres unless otherwise stated. Floorplan measurements are approximate and are not to scale. Lot width is a guide only and may change due to developer covenants and Local Authority guidelines. For more information speak to your Coral Homes New Home Consultant. © Coral Homes Pty Ltd.

# Atlanta 369Q

5  | 4  | 3.5  | 2 


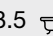
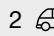


Master Bed	5740 x 3970	Activity	4030 x 4150	Outdoor	3000 x 5500	Lower Area	206.64m <sup>2</sup>
Bed 2	3400 x 3470	Dining	2900 x 5440	House Length	21.52m	Upper Area	163.30m <sup>2</sup>
Bed 3	3420 x 3260	Family	3970 x 5210	House Width	11.40m	House Area	369.94m <sup>2</sup> (39.82sq)
Bed 4	3430 x 2920	Living	4000 x 3810			Lot width	12.5m <sup>+</sup>
Guest	3520 x 2860	Media	4420 x 3600				

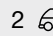
Floorplan and lot width based on Designer facade. Floorplan is indicative only, conceptual in nature and subject to change without notice. Floorplan may depict features and/or other products which are not included in the house design, not included in the house price and/or not available from Coral Homes. All measurements are in millimetres unless otherwise stated. Floorplan measurements are approximate and are not to scale. Lot width is a guide only and may change due to developer covenants and Local Authority guidelines. For more information speak to your Coral Homes New Home Consultant. © Coral Homes Pty Ltd.



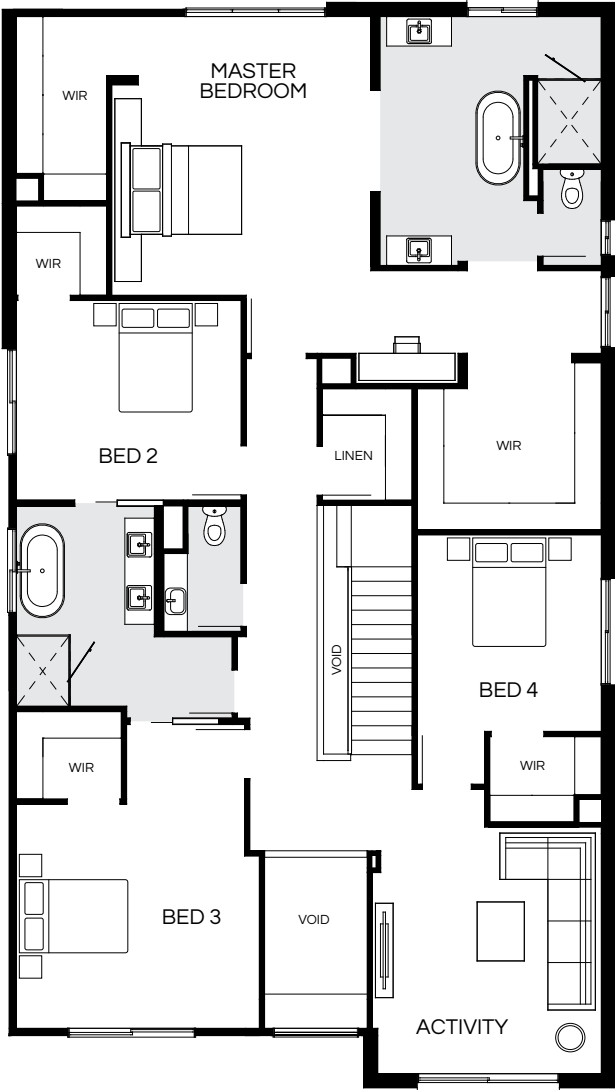
# Atlanta 380Q

5  | 4  | 3.5  | 2 

# Atlanta 400Q

5  | 4  | 3.5  | 2 

Most  
popular



Master Bed	4840 x 4010	Activity	3880 x 3670	Outdoor	3000 x 5500	Lower Area	206.55m²
Bed 2	3420 x 3920	Dining	2900 x 5440	House Length	21.52m	Upper Area	173.78m²
Bed 3	3930 x 4150	Family	3970 x 5210	House Width	11.40m	House Area	380.33m² (40.94sq)
Bed 4	3400 x 2860	Living	4000 x 3810			Lot width	12.5m+
Guest	3520 x 2860	Media	4420 x 3600				

Floorplan and lot width based on Designer facade. Floorplan is indicative only, conceptual in nature and subject to change without notice. Floorplan may depict features and/or other products which are not included in the house design, not included in the house price and/or not available from Coral Homes. All measurements are in millimetres unless otherwise stated. Floorplan measurements are approximate and are not to scale. Lot width is a guide only and may change due to developer covenants and Local Authority guidelines. For more information speak to your Coral Homes New Home Consultant. © Coral Homes Pty Ltd.

Design options available: Master to front | Ensuite to all Bedrooms | Additional costs apply for design options.

Master Bed	4745 x 4410	Activity	4200 x 3900	Outdoor	3000 x 5500	Lower Area	216.82m²
Bed 2	3400 x 3830	Dining	3000 x 5750	House Length	21.525m	Upper Area	183.68m²
Bed 3	3930 x 4140	Family	3865 x 5510	House Width	11.96m	House Area	400.50m² (43.11sq)
Bed 4	3350 x 3140	Living	4700 x 4040			Lot width	13.5m+
Guest	3600 x 3140	Media	4500 x 3810				

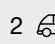
Floorplan and lot width based on Designer facade. Floorplan is indicative only, conceptual in nature and subject to change without notice. Floorplan may depict features and/or other products which are not included in the house design, not included in the house price and/or not available from Coral Homes. All measurements are in millimetres unless otherwise stated. Floorplan measurements are approximate and are not to scale. Lot width is a guide only and may change due to developer covenants and Local Authority guidelines. For more information speak to your Coral Homes New Home Consultant. © Coral Homes Pty Ltd.



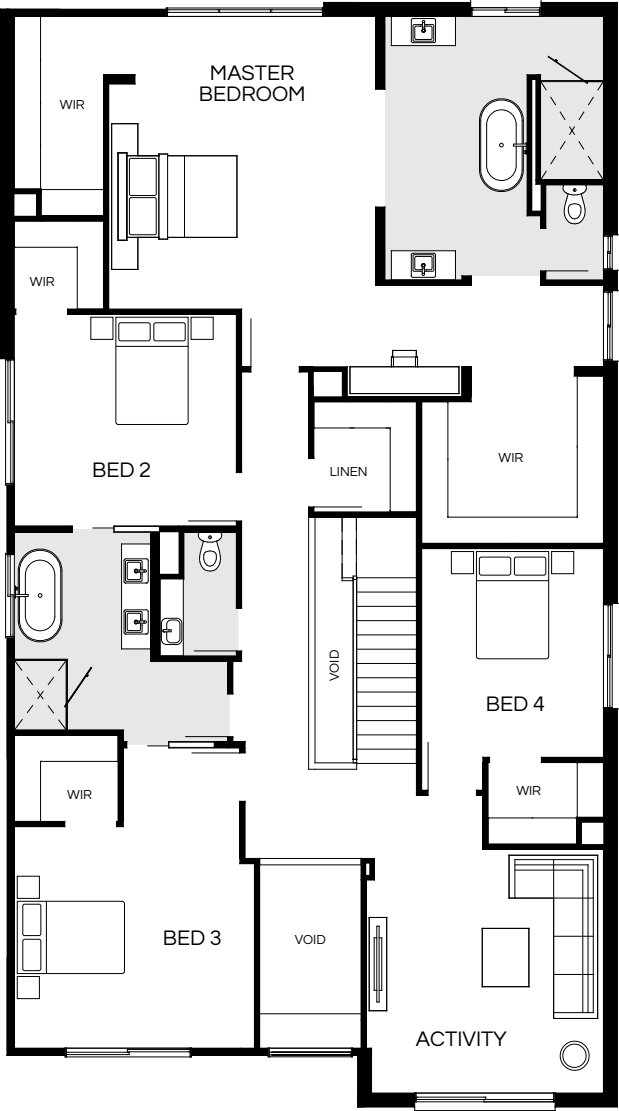
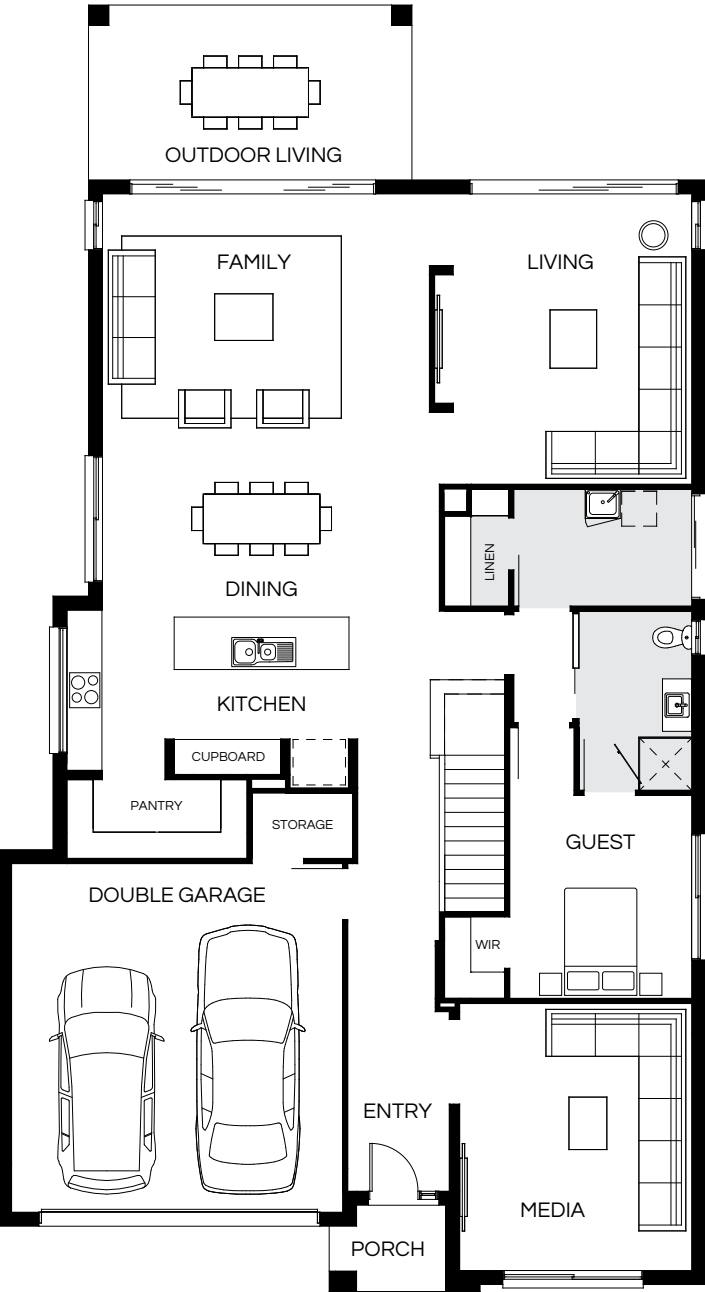
On display

Award winner

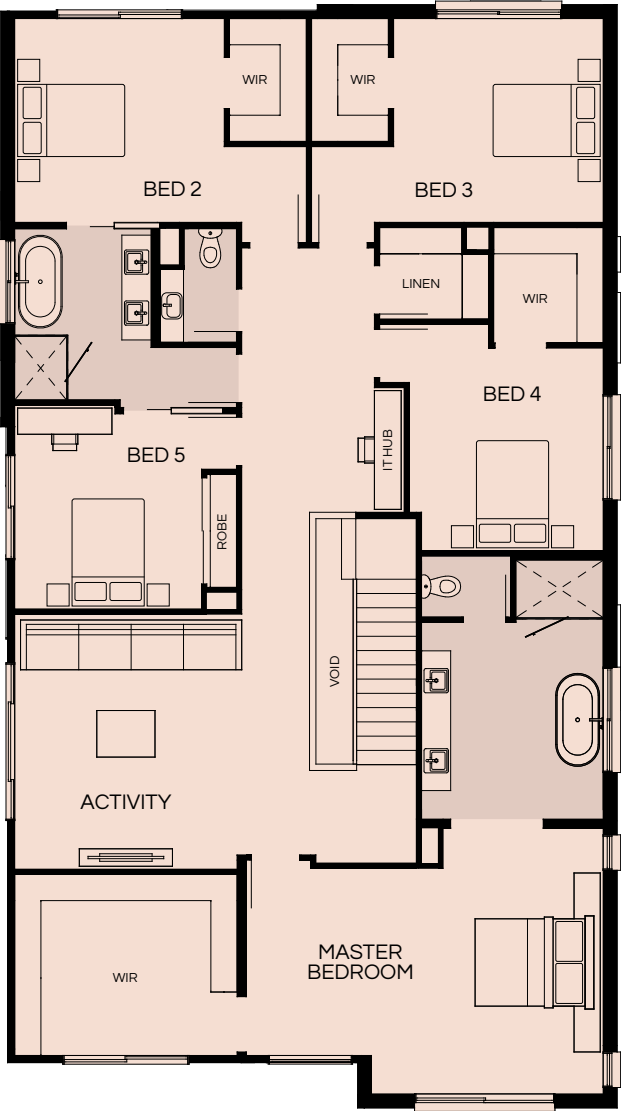
# Atlanta 419Q

5  | 4  | 3.5  | 2 

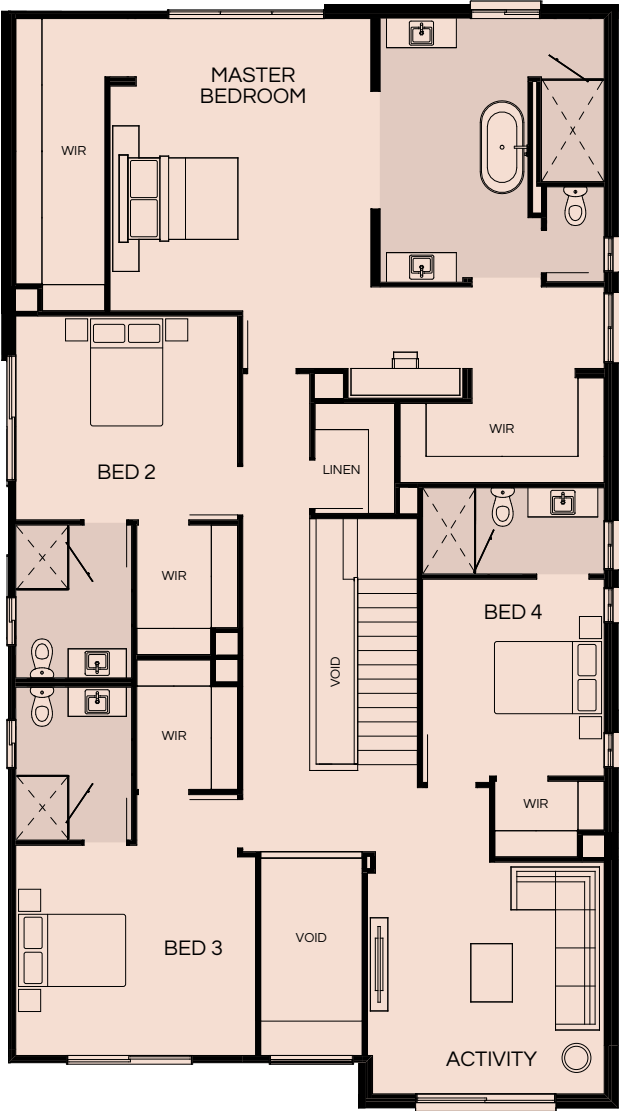
13.5m\* Lot Width



Master to front



Ensuite to all bedrooms



Master Bed	5040 x 4600	Activity	4200 x 4090	Outdoor	3000 x 5550	Lower Area	226.24m²
Bed 2	3650 x 3830	Dining	3020 x 5800	House Length	22.07m	Upper Area	192.93m²
Bed 3	3930 x 4140	Family	4250 x 5630	House Width	12.15m	House Area	419.17m² (45.12sq)
Bed 4	3600 x 3140	Living	5000 x 4110			Lot width	13.5m*
Guest	3500 x 3140	Media	4600 x 4000				



Floorplan and lot width based on Designer facade. Floorplan is indicative only, conceptual in nature and subject to change without notice. Floorplan may depict features and/or other products which are not included in the house design, not included in the house price and/or not available from Coral Homes. All measurements are in millimetres unless otherwise stated. Floorplan measurements are approximate and are not to scale. Lot width is a guide only and may change due to developer covenants and Local Authority guidelines. For more information speak to your Coral Homes New Home Consultant. © Coral Homes Pty Ltd.

# Atlanta Design Options

Design Options based on Atlanta 419Q. These options are only available on certain home designs. Additional costs apply for design options. Floorplans are indicative only, conceptual in nature and subject to change without notice. Floorplans may depict features and/or other products which are not included in the house design, not included in the house price and/or not available from Coral Homes. © Coral Homes Pty Ltd.



# Atlanta 443Q

5  | 4  | 3.5  | 2 



Design options available: Master to front | Ensuite to all Bedrooms | Additional costs apply for design options.

Master Bed	5040 x 4800	Activity	4200 x 4200	Outdoor	3500 x 6200	Lower Area	242.41m <sup>2</sup>
Bed 2	3850 x 3830	Dining	3200 x 6145	House Length	22.77m	Upper Area	201.54m <sup>2</sup>
Bed 3	3930 x 4030	Family	4260 x 5805	House Width	12.85m	House Area	443.95m <sup>2</sup> (47.79sq)
Bed 4	3600 x 3170	Living	5000 x 4185			Lot width	14m <sup>+</sup>
Guest	3630 x 3170	Media	4600 x 4200				

Floorplan and lot width based on Designer facade. Floorplan is indicative only, conceptual in nature and subject to change without notice. Floorplan may depict features and/or other products which are not included in the house design, not included in the house price and/or not available from Coral Homes. All measurements are in millimetres unless otherwise stated. Floorplan measurements are approximate and are not to scale. Lot width is a guide only and may change due to developer covenants and Local Authority guidelines. For more information speak to your Coral Homes New Home Consultant. © Coral Homes Pty Ltd.

# Atlanta 474Q

5  | 4  | 5.5  | 2 



Design options available: Master to front | Additional costs apply for design options.

Master Bed	5315 x 4800	Activity	4400 x 4340	Outdoor	3800 x 6400	Lower Area	259.27m <sup>2</sup>
Bed 2	3720 x 3960	Dining	3465 x 6095	House Length	24.105m	Upper Area	215.64m <sup>2</sup>
Bed 3	3830 x 4230	Family	4400 x 5745	House Width	12.94m	House Area	474.91m <sup>2</sup> (51.12sq)
Bed 4	3600 x 3470	Living	5000 x 4495			Lot width	14.5m <sup>+</sup>
Guest	3630 x 3470	Media	4900 x 4250				

Floorplan and lot width based on Designer facade. Floorplan is indicative only, conceptual in nature and subject to change without notice. Floorplan may depict features and/or other products which are not included in the house design, not included in the house price and/or not available from Coral Homes. All measurements are in millimetres unless otherwise stated. Floorplan measurements are approximate and are not to scale. Lot width is a guide only and may change due to developer covenants and Local Authority guidelines. For more information speak to your Coral Homes New Home Consultant. © Coral Homes Pty Ltd.





# Atlanta Facades

13.5m\* Lot Width



Scan  
to view  
full facade  
range

Oakridge Display Facade



Modern Display Facade



Hamptons



Hamptons Balcony



Vantage



Designer









# Baltimore Series

Designed to suit both traditional and narrow lots of 10m+, the sought-after Baltimore Series has multiple home designs to choose from. These innovative floorplans are designed for contemporary open-plan living, featuring an abundance of family-friendly communal areas.



Baltimore (Hamptons Facade) – Springfield Rise, Spring Mountain

On display



Baltimore – Springfield Rise, Spring Mountain



Baltimore – Springfield Rise, Spring Mountain



Photography depicts items such as homewares, furniture, finishes, landscaping and fencing and may depict items that are upgraded or not supplied by Coral Homes. Speak with your New Home Consultant for more details.

Photography depicts items such as homewares, furniture, finishes, landscaping and fencing and may depict items that are upgraded or not supplied by Coral Homes. Speak with your New Home Consultant for more details.



# Baltimore 224Q

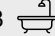
4  | 2  | 3  | 2 



Master Bed	3600 x 3570	Activity	3630 x 3780	House Length	17.21m	Lower Area	119.67m <sup>2</sup>
Bed 2	3100 x 3070	Dining	3200 x 3480	House Width	8.00m	Upper Area	105.32m <sup>2</sup>
Bed 3	3000 x 3000	Living	3600 x 4000			House Area	224.99m <sup>2</sup> (24.22sq)
Bed 4	3000 x 2850	Outdoor	3720 x 2620			Lot width	10m+

Floorplan and lot width based on Designer facade. Floorplan is indicative only, conceptual in nature and subject to change without notice. Floorplan may depict features and/or other products which are not included in the house design, not included in the house price and/or not available from Coral Homes. All measurements are in millimetres unless otherwise stated. Floorplan measurements are approximate and are not to scale. Lot width is a guide only and may change due to developer covenants and Local Authority guidelines. For more information speak to your Coral Homes New Home Consultant. © Coral Homes Pty Ltd.

# Baltimore 239Q

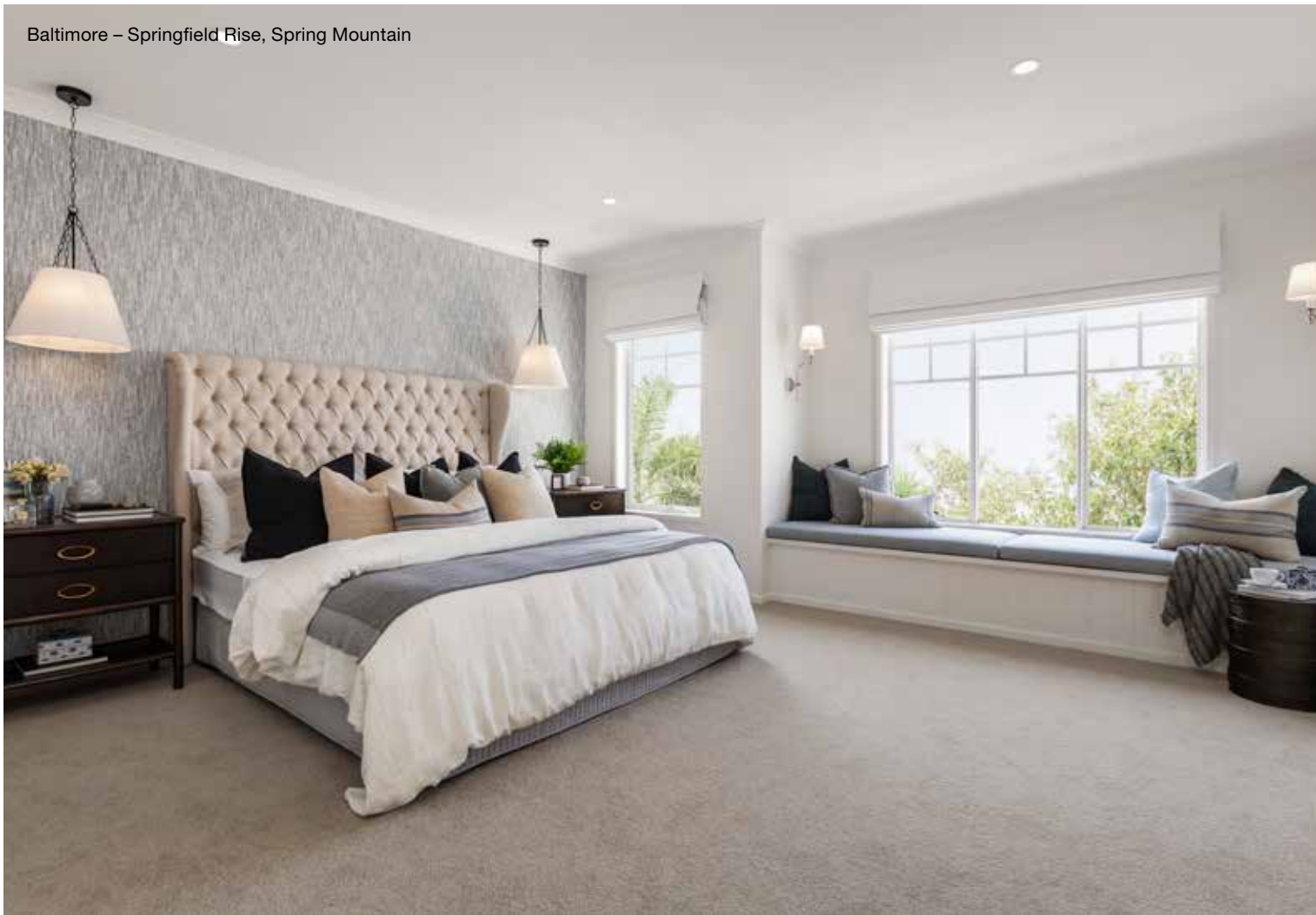
4  | 2  | 3  | 2 



Master Bed	3720 x 3700	Activity	3435 x 3470	House Length	19.605m	Lower Area	136.37m <sup>2</sup>
Bed 2	3085 x 3000	Dining	3100 x 3880	House Width	8.40m	Upper Area	103.19m <sup>2</sup>
Bed 3	3085 x 3000	Living	3860 x 3730			House Area	239.56m <sup>2</sup> (25.79sq)
Bed 4	3000 x 3470	Outdoor	3140 x 2810			Lot width	10m+

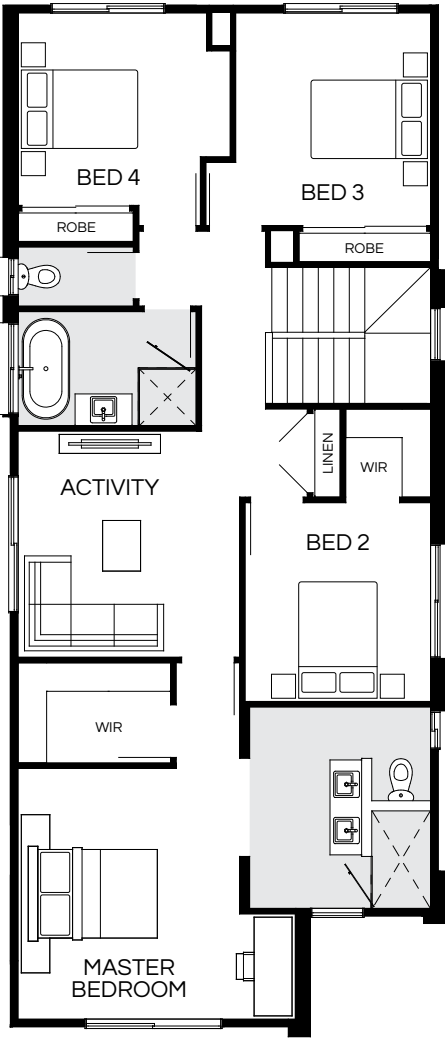
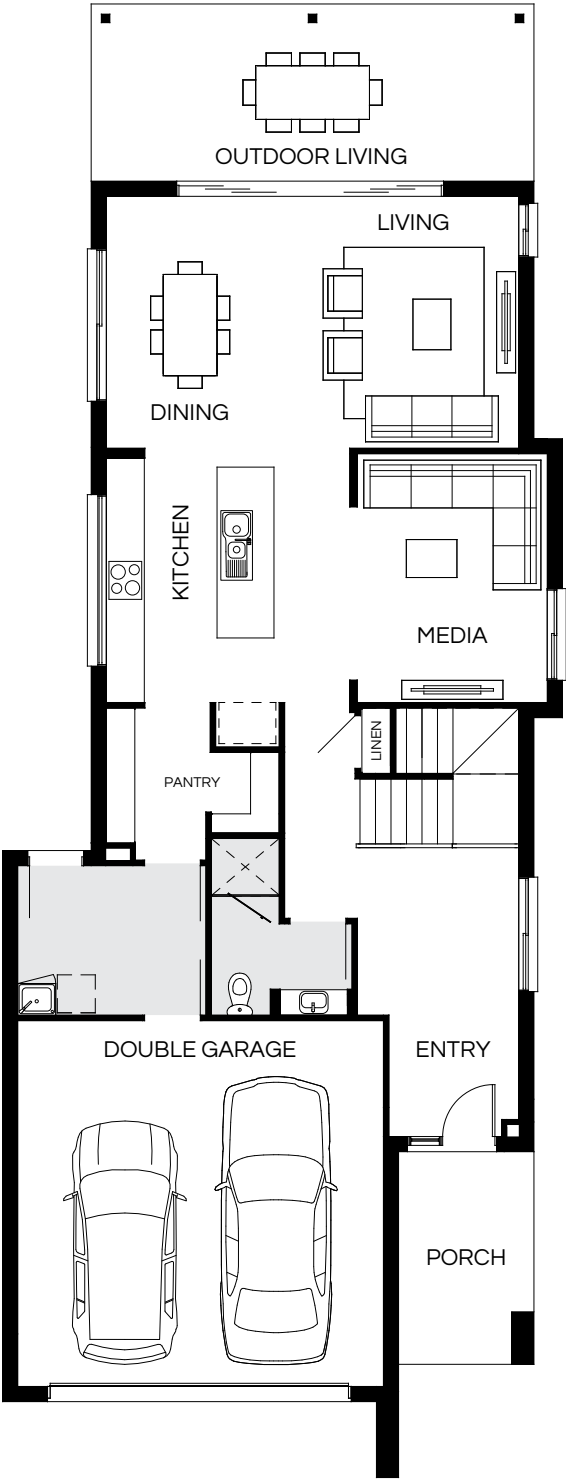
Floorplan and lot width based on Designer facade. Floorplan is indicative only, conceptual in nature and subject to change without notice. Floorplan may depict features and/or other products which are not included in the house design, not included in the house price and/or not available from Coral Homes. All measurements are in millimetres unless otherwise stated. Floorplan measurements are approximate and are not to scale. Lot width is a guide only and may change due to developer covenants and Local Authority guidelines. For more information speak to your Coral Homes New Home Consultant. © Coral Homes Pty Ltd.





# Baltimore 274Q

4 | 3 | 3 | 2



Design options available: Master to rear   Additional costs apply for design options.							
Master Bed	3980 x 4400	Activity	3590 x 3520	Outdoor	2800 x 7000	Lower Area	167.97m²
Bed 2	3160 x 2950	Dining	4000 x 3000	House Length	23.29m	Upper Area	106.22m²
Bed 3	3380 x 3100	Living	4000 x 3540	House Width	8.85m	House Area	274.19m² (29.51sq)
Bed 4	3060 x 3000	Media	3950 x 3020			Lot width	10m+

Floorplan and lot width based on Designer facade. Floorplan is indicative only, conceptual in nature and subject to change without notice. Floorplan may depict features and/or other products which are not included in the house design, not included in the house price and/or not available from Coral Homes. All measurements are in millimetres unless otherwise stated. Floorplan measurements are approximate and are not to scale. Lot width is a guide only and may change due to developer covenants and Local Authority guidelines. For more information speak to your Coral Homes New Home Consultant. © Coral Homes Pty Ltd.



# Baltimore 296Q

5  | 3  | 3  | 2 



Master Bed	4470 x 3720	Activity	3540 x 3930	House Length	24.94m	Lower Area	179.60m <sup>2</sup>
Bed 2	3330 x 3250	Dining	4100 x 3000	House Width	8.85m	Upper Area	116.67m <sup>2</sup>
Bed 3	3220 x 3220	Living	4100 x 3540			House Area	296.27m <sup>2</sup> (31.89sq)
Bed 4	3000 x 3000	Media	3950 x 3020			Lot width	10m <sup>+</sup>
Guest	3000 x 2750	Outdoor	3000 x 7000				

Floorplan and lot width based on Designer facade. Floorplan is indicative only, conceptual in nature and subject to change without notice. Floorplan may depict features and/or other products which are not included in the house design, not included in the house price and/or not available from Coral Homes. All measurements are in millimetres unless otherwise stated. Floorplan measurements are approximate and are not to scale. Lot width is a guide only and may change due to developer covenants and Local Authority guidelines. For more information speak to your Coral Homes New Home Consultant. © Coral Homes Pty Ltd.

Baltimore – Arise Estate, Rochedale



Baltimore – Arise Estate, Rochedale



Photography depicts items such as homewares, furniture, finishes, landscaping and fencing and may depict items that are upgraded or not supplied by Coral Homes. Speak with your New Home Consultant for more details.





# Baltimore Facades

10m+ Lot Width



Modern



Hamptons



East Hamptons



Mornington



Vista



Designer





# Baltimore 302Q

4  | 3  | 3  | 2 



Design options available: Master to rear | Additional costs apply for design options.

Master Bed	4310 x 4790	Activity	3500 x 4290	Outdoor	3800 x 4040	Lower Area	173.17m²
Bed 2	3590 x 3500	Dining	3100 x 3400	House Length	18.06m	Upper Area	128.96m²
Bed 3	3100 x 3500	Family	4290 x 5000	House Width	10.90m	House Area	302.13m² (32.52sq)
Bed 4	3100 x 3260	Living	4210 x 3130			Lot width	12m+

Floorplan and lot width based on Designer facade. Floorplan is indicative only, conceptual in nature and subject to change without notice. Floorplan may depict features and/or other products which are not included in the house design, not included in the house price and/or not available from Coral Homes. All measurements are in millimetres unless otherwise stated. Floorplan measurements are approximate and are not to scale. Lot width is a guide only and may change due to developer covenants and Local Authority guidelines. For more information speak to your Coral Homes New Home Consultant. © Coral Homes Pty Ltd.

Baltimore – Springfield Rise, Spring Mountain



Baltimore – Springfield Rise, Spring Mountain



Photography depicts items such as homewares, furniture, finishes, landscaping and fencing and may depict items that are upgraded or not supplied by Coral Homes. Speak with your New Home Consultant for more details.



On display

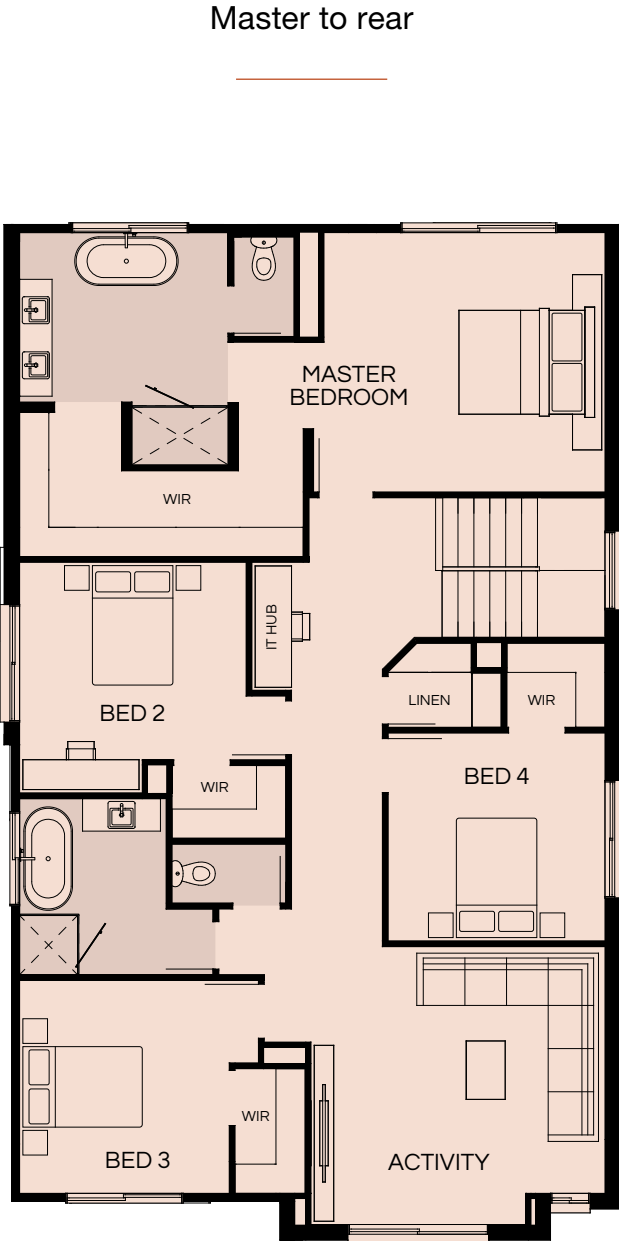
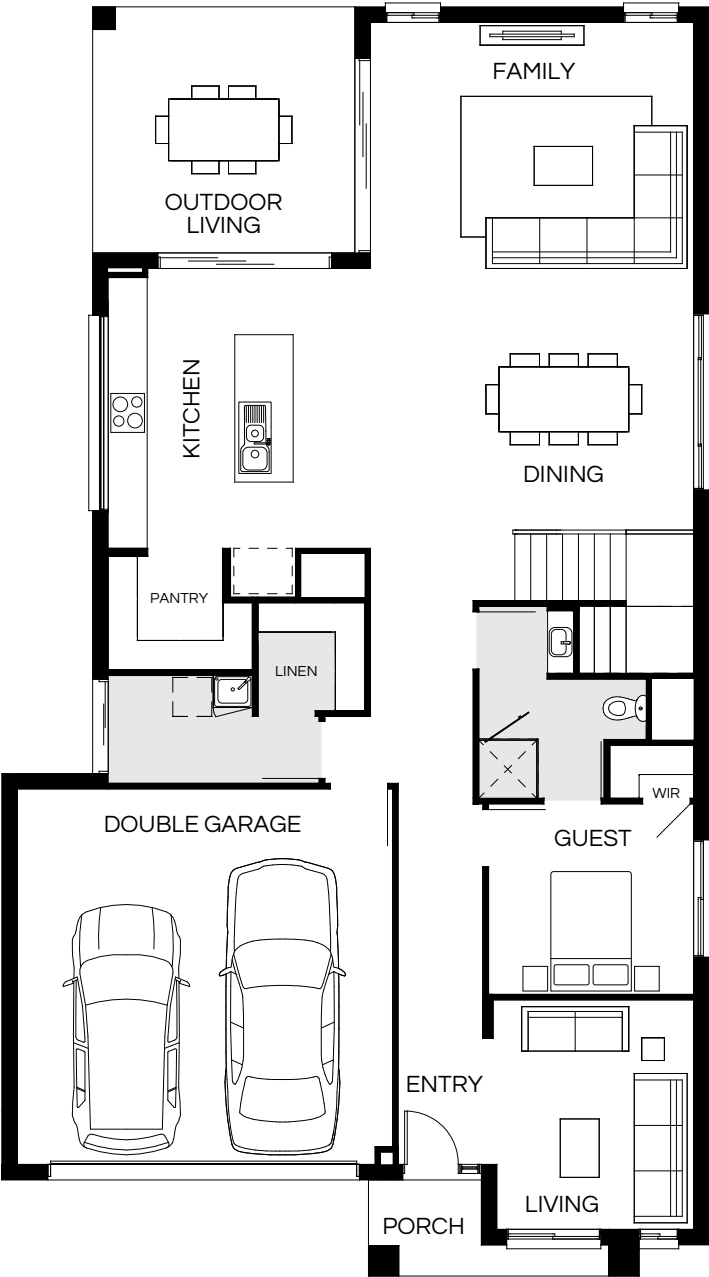
Most popular

# Baltimore 331Q

5  | 3  | 3  | 2 

# Baltimore Design Options

12m+ Lot Width



Master Bed	4590 x 4660	Activity	4295 x 4510	House Length	19.55m	Lower Area	187.67m <sup>2</sup>
Bed 2	3130 x 3200	Dining	3310 x 3500	House Width	10.90m	Upper Area	144.20m <sup>2</sup>
Bed 3	3500 x 3350	Family	4495 x 5000			House Area	331.87m <sup>2</sup> (35.72sq)
Bed 4	3500 x 3500	Living	3550 x 3110			Lot width	12m+
Guest	2950 x 3180	Outdoor	3790 x 4040				

Floorplan and lot width based on Designer facade. Floorplan is indicative only, conceptual in nature and subject to change without notice. Floorplan may depict features and/or other products which are not included in the house design, not included in the house price and/or not available from Coral Homes. All measurements are in millimetres unless otherwise stated. Floorplan measurements are approximate and are not to scale. Lot width is a guide only and may change due to developer covenants and Local Authority guidelines. For more information speak to your Coral Homes New Home Consultant. © Coral Homes Pty Ltd.

Design Options based on Baltimore 331Q. These options are only available on certain home designs. Additional costs apply for design options. Floorplans are indicative only, conceptual in nature and subject to change without notice. Floorplans may depict features and/or other products which are not included in the house design, not included in the house price and/or not available from Coral Homes. © Coral Homes Pty Ltd.



# Baltimore 356Q

5  | 3  | 3  | 2 



Design options available: Master to rear | Additional costs apply for design options.

Master Bed	4580 x 4660	Activity	4260 x 4310	House Length	21.16m	Lower Area	202.58m <sup>2</sup>
Bed 2	3390 x 3500	Dining	3300 x 3500	House Width	10.90m	Upper Area	153.60m <sup>2</sup>
Bed 3	3230 x 3450	Family	4390 x 5000			House Area	356.18m <sup>2</sup> (38.34sq)
Bed 4	3000 x 3200	Living	4500 x 3220			Lot width	12m <sup>+</sup>
Guest	3000 x 3290	Outdoor	4300 x 4040				

Floorplan and lot width based on Designer facade. Floorplan is indicative only, conceptual in nature and subject to change without notice. Floorplan may depict features and/or other products which are not included in the house design, not included in the house price and/or not available from Coral Homes. All measurements are in millimetres unless otherwise stated. Floorplan measurements are approximate and are not to scale. Lot width is a guide only and may change due to developer covenants and Local Authority guidelines. For more information speak to your Coral Homes New Home Consultant. © Coral Homes Pty Ltd.

# Baltimore Facades

12m<sup>+</sup> Lot Width



Vantage Display Facade



Modern



Hamptons



Hamptons Balcony



Vista



Designer



Facade images shown are indicative only, conceptual in nature and subject to change. Facade images are to be used as a guide, may depict non-standard items and may not be house specific. Please obtain house specific drawings from your New Home Consultant to assist you in making your facade choice.







# Bentley Series

The beautiful Bentley Series is thoughtfully designed for family living, offering a spacious double storey design that effortlessly connects indoor and outdoor living. The open-plan living area flows seamlessly onto the alfresco, creating a perfect setting for entertaining and everyday relaxation. With multiple living areas, including a media room, family room, and an upstairs retreat, the Bentley offers ample room for everyone to unwind and enjoy their own space.



Scan to view series

Bentley (Modern Facade) – Aura Estate, Bells Creek

On display



Bentley – Aura Estate, Bells Creek



Bentley – Aura Estate, Bells Creek



Photography depicts items such as homewares, furniture, finishes, landscaping and fencing and may depict items that are upgraded or not supplied by Coral Homes. Speak with your New Home Consultant for more details.

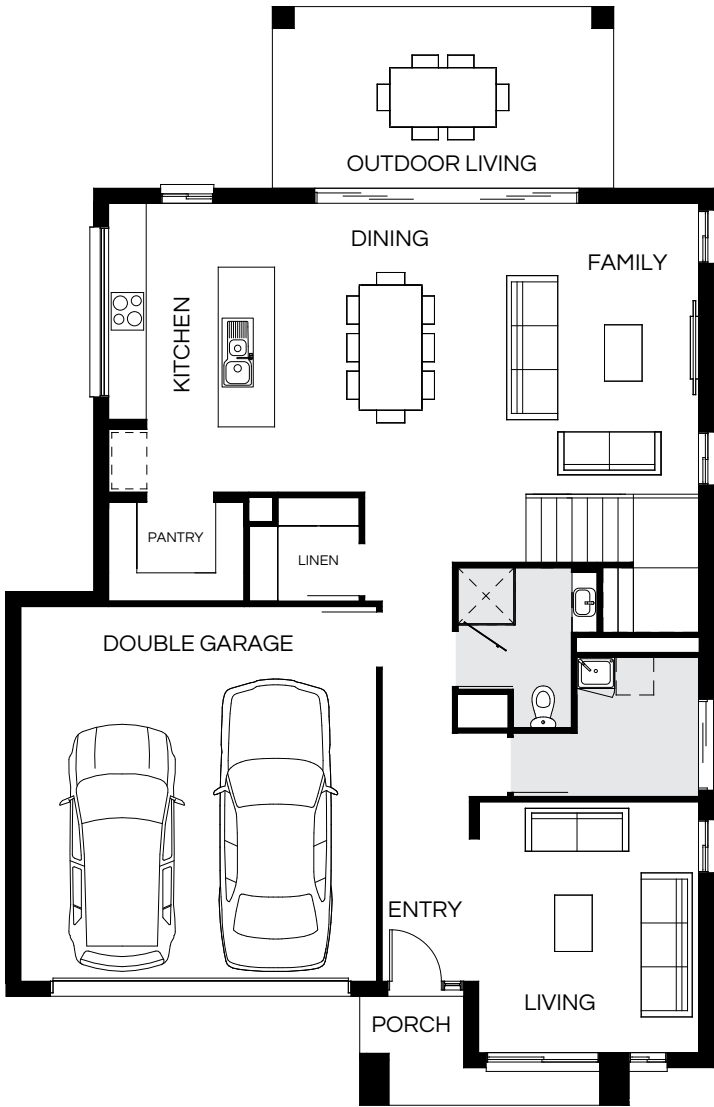
Photography depicts items such as homewares, furniture, finishes, landscaping and fencing and may depict items that are upgraded or not supplied by Coral Homes. Speak with your New Home Consultant for more details.





# Bentley 300Q

4 | 3 | 3.5 | 2



Design options available: Master to front   Additional costs apply for design options.							
Master Bed	4630 x 4320	Activity	3430 x 4220	Outdoor	2900 x 5450	Lower Area	161.59m²
Bed 2	3720 x 3840	Dining	4630 x 2990	House Length	17.54m	Upper Area	138.90m²
Bed 3	3120 x 3420	Family	4700 x 3790	House Width	11.30m	House Area	300.49m² (32.35sq)
Bed 4	3220 x 3220	Living	4020 x 3530			Lot width	12.5m+

Floorplan and lot width based on Designer facade. Floorplan is indicative only, conceptual in nature and subject to change without notice. Floorplan may depict features and/or other products which are not included in the house design, not included in the house price and/or not available from Coral Homes. All measurements are in millimetres unless otherwise stated. Floorplan measurements are approximate and are not to scale. Lot width is a guide only and may change due to developer covenants and Local Authority guidelines. For more information speak to your Coral Homes New Home Consultant. © Coral Homes Pty Ltd.



# Bentley 329Q

4  | 3  | 3.5  | 2 



Design options available: Master to front   Additional costs apply for design options.									
Master Bed	4620 x 4420	Activity	4320 x 4350	Media	3920 x 3820	Lower Area	176.99m²		
Bed 2	4000 x 3990	Dining	4620 x 2980	Outdoor	2900 x 5450	Upper Area	152.03m²		
Bed 3	3400 x 3370	Family	4690 x 3900	House Length	18.70m	House Area	329.02m² (35.42sq)		
Bed 4	3370 x 3320	Study	2900 x 3470	House Width	11.65m	Lot width	13m+		

Floorplan and lot width based on Designer facade. Floorplan is indicative only, conceptual in nature and subject to change without notice. Floorplan may depict features and/or other products which are not included in the house design, not included in the house price and/or not available from Coral Homes. All measurements are in millimetres unless otherwise stated. Floorplan measurements are approximate and are not to scale. Lot width is a guide only and may change due to developer covenants and Local Authority guidelines. For more information speak to your Coral Homes New Home Consultant. © Coral Homes Pty Ltd.

Bentley – Aura Estate, Bells Creek



Bentley – Aura Estate, Bells Creek



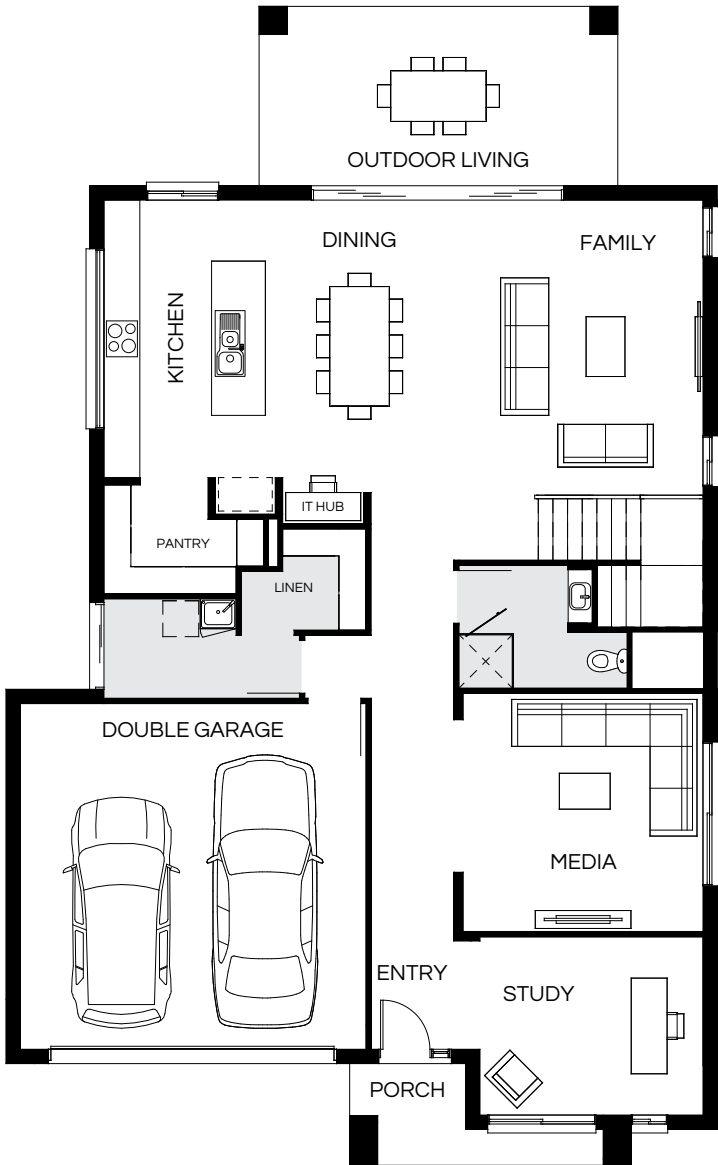
Photography depicts items such as homewares, furniture, finishes, landscaping and fencing and may depict items that are upgraded or not supplied by Coral Homes. Speak with your New Home Consultant for more details.





# Bentley 356Q

4 | 3 | 3.5 | 2







Design options available: Master to front   Additional costs apply for design options.							
Master Bed	4920 x 4780	Activity	4200 x 4710	Media	4000 x 4030	Lower Area	190.49m²
Bed 2	4400 x 4250	Dining	4900 x 3100	Outdoor	3000 x 6000	Upper Area	165.78m²
Bed 3	3800 x 3520	Family	4990 x 4230	House Length	19.38m	House Area	356.27m² (38.35sq)
Bed 4	3200 x 3600	Study	3000 x 3750	House Width	11.90m	Lot width	13m+

Floorplan and lot width based on Designer facade. Floorplan is indicative only, conceptual in nature and subject to change without notice. Floorplan may depict features and/or other products which are not included in the house design, not included in the house price and/or not available from Coral Homes. All measurements are in millimetres unless otherwise stated. Floorplan measurements are approximate and are not to scale. Lot width is a guide only and may change due to developer covenants and Local Authority guidelines. For more information speak to your Coral Homes New Home Consultant. © Coral Homes Pty Ltd.



# Bentley 383Q

4  | 3  | 3.5  | 2 







Design options available: Master to front | Additional costs apply for design options.

Master Bed	5000 x 5030	Activity	3800 x 5160	Outdoor	3250 x 6000	Lower Area	204.98m²
Bed 2	3900 x 4260	Dining	5000 x 3090	House Length	20.43m	Upper Area	178.34m²
Bed 3	3660 x 3520	Family	5070 x 4490	House Width	12.15m	House Area	383.32m² (41.26sq)
Bed 4	3620 x 3650	Study	3250 x 3970			Lot width	13.5m*
		Media	4270 x 4230				

Floorplan and lot width based on Designer facade. Floorplan is indicative only, conceptual in nature and subject to change without notice. Floorplan may depict features and/or other products which are not included in the house design, not included in the house price and/or not available from Coral Homes. All measurements are in millimetres unless otherwise stated. Floorplan measurements are approximate and are not to scale. Lot width is a guide only and may change due to developer covenants and Local Authority guidelines. For more information speak to your Coral Homes New Home Consultant. © Coral Homes Pty Ltd.

# Bentley 406Q

5  | 3  | 3.5  | 2 



Design options available: Master to front | Additional costs apply for design options.

Master Bed	4610 x 5100	Activity	4170 x 5210	House Length	21.54m	Lower Area	216.94m²
Bed 2	4110 x 4360	Dining	5100 x 3080	House Width	12.25m	Upper Area	189.33m²
Bed 3	4160 x 3570	Family	5170 x 4600			House Area	406.27m² (43.73sq)
Bed 4	3920 x 3650	Media	4210 x 4210			Lot width	13.5m*
Guest	3120 x 4280	Outdoor	3500 x 6000				

Floorplan and lot width based on Designer facade. Floorplan is indicative only, conceptual in nature and subject to change without notice. Floorplan may depict features and/or other products which are not included in the house design, not included in the house price and/or not available from Coral Homes. All measurements are in millimetres unless otherwise stated. Floorplan measurements are approximate and are not to scale. Lot width is a guide only and may change due to developer covenants and Local Authority guidelines. For more information speak to your Coral Homes New Home Consultant. © Coral Homes Pty Ltd.





Bentley – Aura Estate, Bells Creek

# Bentley Facades

12.5m+ Lot Width



Modern Display Facade



Hamptons



Hamptons Balcony



Vista



Designer









# Boston Series

The Boston Series has been designed to suit 12m+ lot widths. Choose from many flexible floorplans and plenty of stunning facades to bring the Boston Series to life. The double storey homes feature an impressive open-plan kitchen, dining and family living that opens seamlessly onto the outdoor entertaining space.



Scan to view series

Boston – Newport Estate, Newport

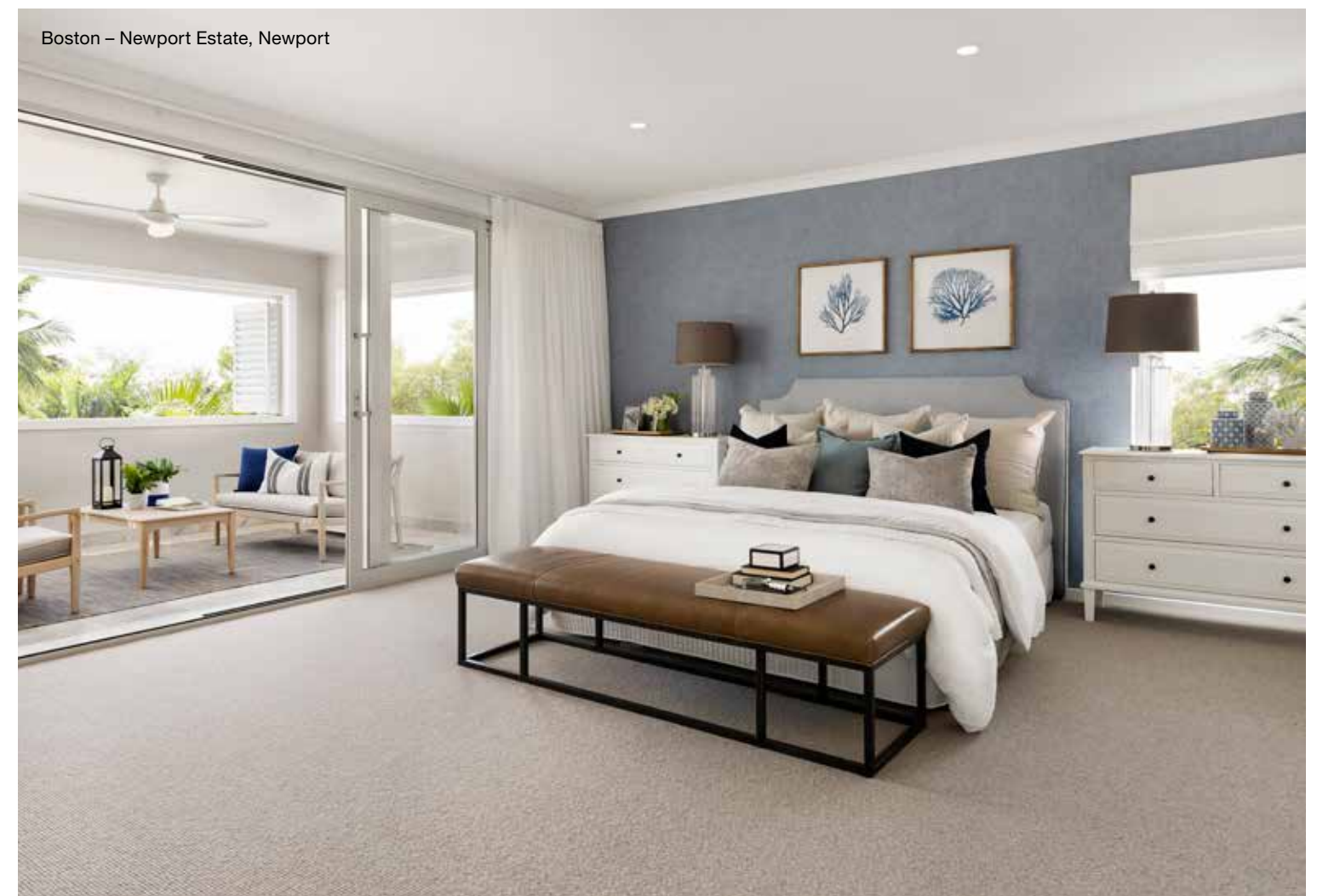


Boston (Montauk Facade) – Newport Estate, Newport



On  
display

Boston – Newport Estate, Newport





# Boston 297Q





4  | 3  | 3.5  | 2 



Master Bed	4230 x 4620	Activity	3450 x 4215	Study	3020 x 3050	Lower Area	166.15m²
Bed 2	3100 x 3840	Dining	3180 x 3400	Outdoor	3110 x 3460	Upper Area	131.77m²
Bed 3	3270 x 3220	Family	4160 x 4770	House Length	17.75m	House Area	297.92m² (32.07sq)
Bed 4	3020 x 3500	Media	3720 x 3210	House Width	10.90m	Lot width	12m+

Floorplan and lot width based on Designer facade. Floorplan is indicative only, conceptual in nature and subject to change without notice. Floorplan may depict features and/or other products which are not included in the house design, not included in the house price and/or not available from Coral Homes. All measurements are in millimetres unless otherwise stated. Floorplan measurements are approximate and are not to scale. Lot width is a guide only and may change due to developer covenants and Local Authority guidelines. For more information speak to your Coral Homes New Home Consultant. © Coral Homes Pty Ltd.

# Boston 307Q

5  | 3  | 3.5  | 2 



Master Bed	4300 x 4240	Guest	3120 x 3250	Living	3820 x 3150	Lower Area	173.47m²
Bed 2	3100 x 4400	Activity	3420 x 4265	Outdoor	3100 x 3770	Upper Area	134.42m²
Bed 3	3270 x 3220	Dining	3170 x 4000	House Length	18.10m	House Area	307.89m² (33.14sq)
Bed 4	3020 x 3550	Family	4230 x 5070	House Width	11.35m	Lot width	12.5m+

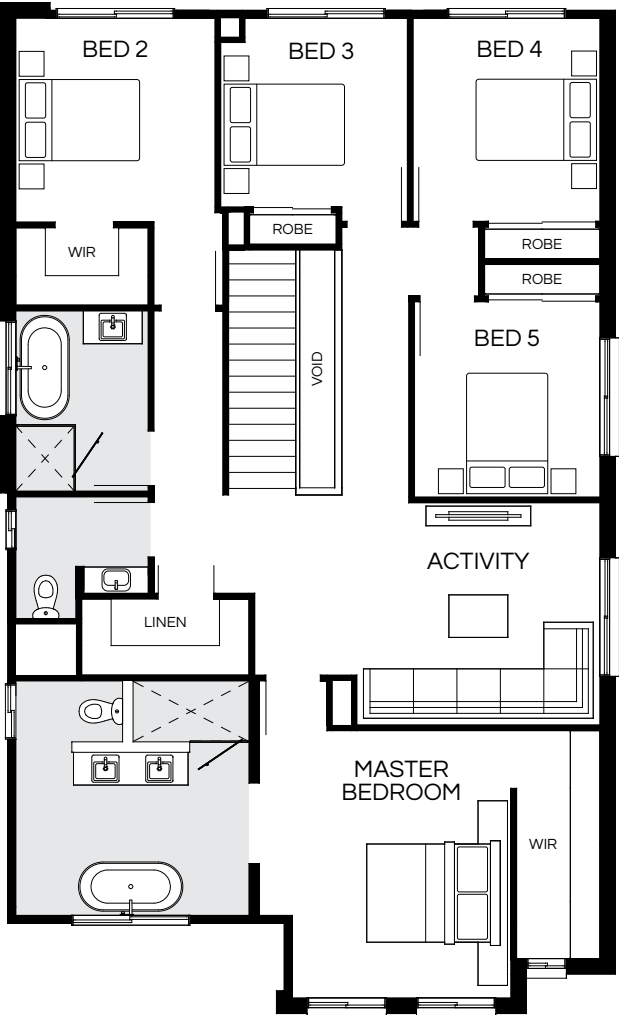
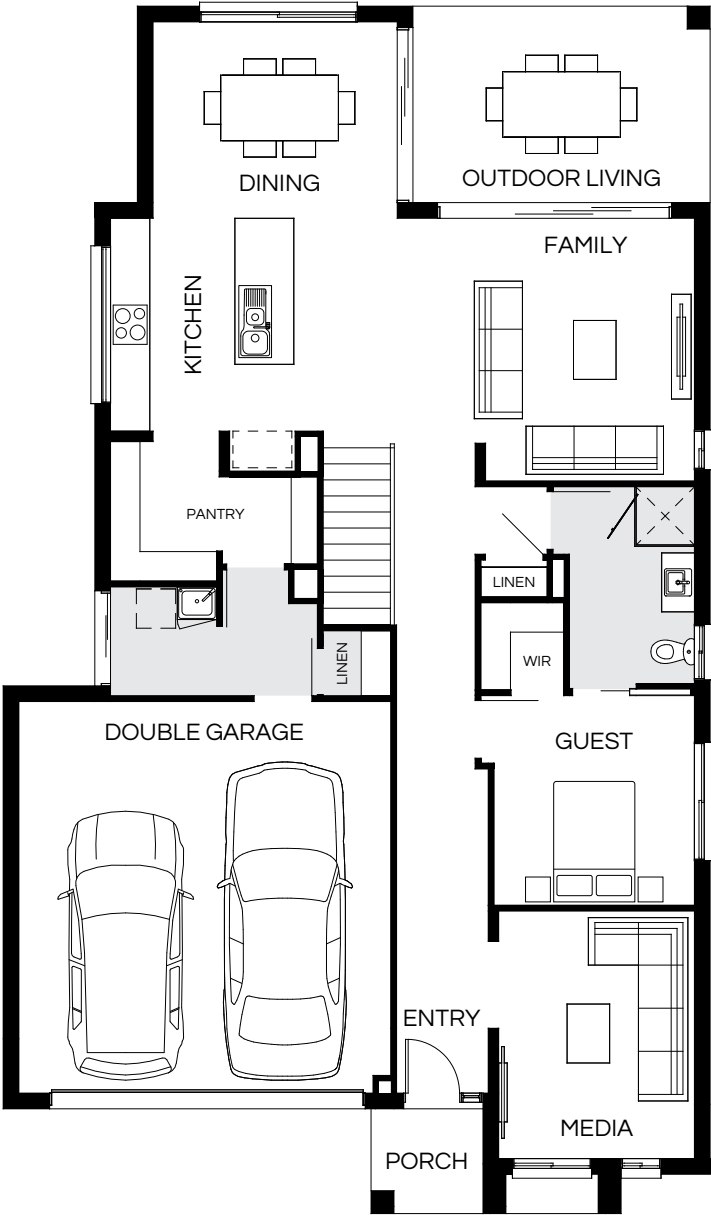
Floorplan and lot width based on Designer facade. Floorplan is indicative only, conceptual in nature and subject to change without notice. Floorplan may depict features and/or other products which are not included in the house design, not included in the house price and/or not available from Coral Homes. All measurements are in millimetres unless otherwise stated. Floorplan measurements are approximate and are not to scale. Lot width is a guide only and may change due to developer covenants and Local Authority guidelines. For more information speak to your Coral Homes New Home Consultant. © Coral Homes Pty Ltd.





# Boston 308Q

6 | 3 | 3.5 | 2





Design options available: Master to rear   Additional costs apply for design options.							
Master Bed	4100 x 3860	Guest	3220 x 3080	Outdoor	3000 x 4540	Lower Area	172.86m²
Bed 2	3130 x 3060	Activity	3410 x 3730	House Length	18.44m	Upper Area	135.75m²
Bed 3	2900 x 2870	Dining	3000 x 3750	House Width	10.80m	House Area	308.61m² (33.22sq)
Bed 4	3120 x 2870	Family	4030 x 4540			Lot width	12m+
Bed 5	3000 x 2850	Media	3800 x 3010				

Floorplan and lot width based on Designer facade. Floorplan is indicative only, conceptual in nature and subject to change without notice. Floorplan may depict features and/or other products which are not included in the house design, not included in the house price and/or not available from Coral Homes. All measurements are in millimetres unless otherwise stated. Floorplan measurements are approximate and are not to scale. Lot width is a guide only and may change due to developer covenants and Local Authority guidelines. For more information speak to your Coral Homes New Home Consultant. © Coral Homes Pty Ltd.



# Boston 326Q




5  | 3  | 3.5  | 2 



Master Bed	4310 x 4350	Activity	4020 x 3050	House Length	18.85m	Lower Area	183.15m <sup>2</sup>
Bed 2	3650 x 3200	Dining	3210 x 4000	House Width	11.15m	Upper Area	143.55m <sup>2</sup>
Bed 3	3530 x 3050	Family	4040 x 4640			House Area	326.70m <sup>2</sup> (35.17sq)
Bed 4	3330 x 3050	Study	2930 x 3350			Lot width	12.5m <sup>+</sup>
Bed 5	3250 x 2930	Outdoor	3150 x 4640				

Floorplan and lot width based on Designer facade. Floorplan is indicative only, conceptual in nature and subject to change without notice. Floorplan may depict features and/or other products which are not included in the house design, not included in the house price and/or not available from Coral Homes. All measurements are in millimetres unless otherwise stated. Floorplan measurements are approximate and are not to scale. Lot width is a guide only and may change due to developer covenants and Local Authority guidelines. For more information speak to your Coral Homes New Home Consultant. © Coral Homes Pty Ltd.

# Boston 327Q

5  | 3  | 3.5  | 2 






Design options available: Master to front   Additional costs apply for design options.							
Master Bed	3815 x 4200	Activity	4680 x 4730	House Length	18.81m	Lower Area	183.39m <sup>2</sup>
Bed 2	3430 x 3250	Dining	3200 x 4000	House Width	11.20m	Upper Area	143.61m <sup>2</sup>
Bed 3	3130 x 3180	Family	4200 x 4690			House Area	327.00m <sup>2</sup> (35.20sq)
Bed 4	3300 x 3000	Media	3800 x 3330			Lot width	12.5m <sup>+</sup>
Guest	3220 x 3400	Outdoor	3200 x 4690				

Floorplan and lot width based on Designer facade. Floorplan is indicative only, conceptual in nature and subject to change without notice. Floorplan may depict features and/or other products which are not included in the house design, not included in the house price and/or not available from Coral Homes. All measurements are in millimetres unless otherwise stated. Floorplan measurements are approximate and are not to scale. Lot width is a guide only and may change due to developer covenants and Local Authority guidelines. For more information speak to your Coral Homes New Home Consultant. © Coral Homes Pty Ltd.

Most popular



# Boston 354Q

5  | 3  | 3.5  | 2 



Design options available: Master to rear   Additional costs apply for design options.							
Master Bed	4680 x 4220	Activity	4340 x 3705	House Length	19.52m	Lower Area	198.65m²
Bed 2	3420 x 3300	Dining	3115 x 4000	House Width	11.90m	Upper Area	155.89m²
Bed 3	3520 x 3100	Family	4100 x 4890			House Area	354.54m² (38.16sq)
Bed 4	3170 x 3000	Media	4420 x 3900			Lot width	13m*
Guest	3320 x 3460	Outdoor	3095 x 4890				

Floorplan and lot width based on Designer facade. Floorplan is indicative only, conceptual in nature and subject to change without notice. Floorplan may depict features and/or other products which are not included in the house design, not included in the house price and/or not available from Coral Homes. All measurements are in millimetres unless otherwise stated. Floorplan measurements are approximate and are not to scale. Lot width is a guide only and may change due to developer covenants and Local Authority guidelines. For more information speak to your Coral Homes New Home Consultant. © Coral Homes Pty Ltd.

Boston – Newport Estate, Newport



Photography depicts items such as homewares, furniture, finishes, landscaping and fencing and may depict items that are upgraded or not supplied by Coral Homes. Speak with your New Home Consultant for more details.



# Boston 374Q



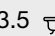
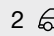
5  | 3  | 4  | 2 



Design options available: Master to rear   Additional costs apply for design options.					
Master Bed	4600 x 4470	Activity	4110 x 3825	House Length	20.475m
Bed 2	3520 x 3300	Dining	3360 x 3915	House Width	12.00m
Bed 3	3420 x 3200	Family	4400 x 5075	Lower Area	209.72m²
Bed 4	3240 x 3000	Media	4520 x 4000	Upper Area	164.65m²
Guest	3495 x 3560	Outdoor	3300 x 5075	House Area	374.37m² (40.30sq)
				Lot width	13.5m+

Floorplan and lot width based on Designer facade. Floorplan is indicative only, conceptual in nature and subject to change without notice. Floorplan may depict features and/or other products which are not included in the house design, not included in the house price and/or not available from Coral Homes. All measurements are in millimetres unless otherwise stated. Floorplan measurements are approximate and are not to scale. Lot width is a guide only and may change due to developer covenants and Local Authority guidelines. For more information speak to your Coral Homes New Home Consultant. © Coral Homes Pty Ltd.

# Boston 393Q

4  | 3  | 3.5  | 2 



Master Bed	4800 x 5710	Activity	4600 x 5870	Study	3420 x 3730	Lower Area	218.81m²
Bed 2	3760 x 3650	Dining	3660 x 4000	Outdoor	3200 x 5180	Upper Area	174.44m²
Bed 3	3420 x 3890	Family	4800 x 7020	House Length	21.25m	House Area	393.25m² (42.33sq)
Bed 4	3300 x 3500	Media	4620 x 3910	House Width	12.04m	Lot width	14m+

Floorplan and lot width based on Designer facade. Floorplan is indicative only, conceptual in nature and subject to change without notice. Floorplan may depict features and/or other products which are not included in the house design, not included in the house price and/or not available from Coral Homes. All measurements are in millimetres unless otherwise stated. Floorplan measurements are approximate and are not to scale. Lot width is a guide only and may change due to developer covenants and Local Authority guidelines. For more information speak to your Coral Homes New Home Consultant. © Coral Homes Pty Ltd.





# Boston Facades

12m+ Lot Width



Scan  
to view  
facades

Montauk Display Facade



Modern



Hamptons



Vantage



Vaucluse



Designer









# Monash Series

The Monash Series is a collection of spacious double storey homes, designed specifically for lot widths of 12m or more. With floorplans available in varying sizes and layouts, the Monash Series has multiple living spaces – perfect for large or multi-generational families.



Scan to view series

Monash (Hamptons Facade) – Paradise Lakes Estate, Willawong



On  
display

Monash – Paradise Lakes Estate, Willawong



Monash – Paradise Lakes Estate, Willawong



Photography depicts items such as homewares, furniture, finishes, landscaping and fencing and may depict items that are upgraded or not supplied by Coral Homes. Speak with your New Home Consultant for more details.

Photography depicts items such as homewares, furniture, finishes, landscaping and fencing and may depict items that are upgraded or not supplied by Coral Homes. Speak with your New Home Consultant for more details.



# Monash 236Q

4  | 2  | 3  | 2 

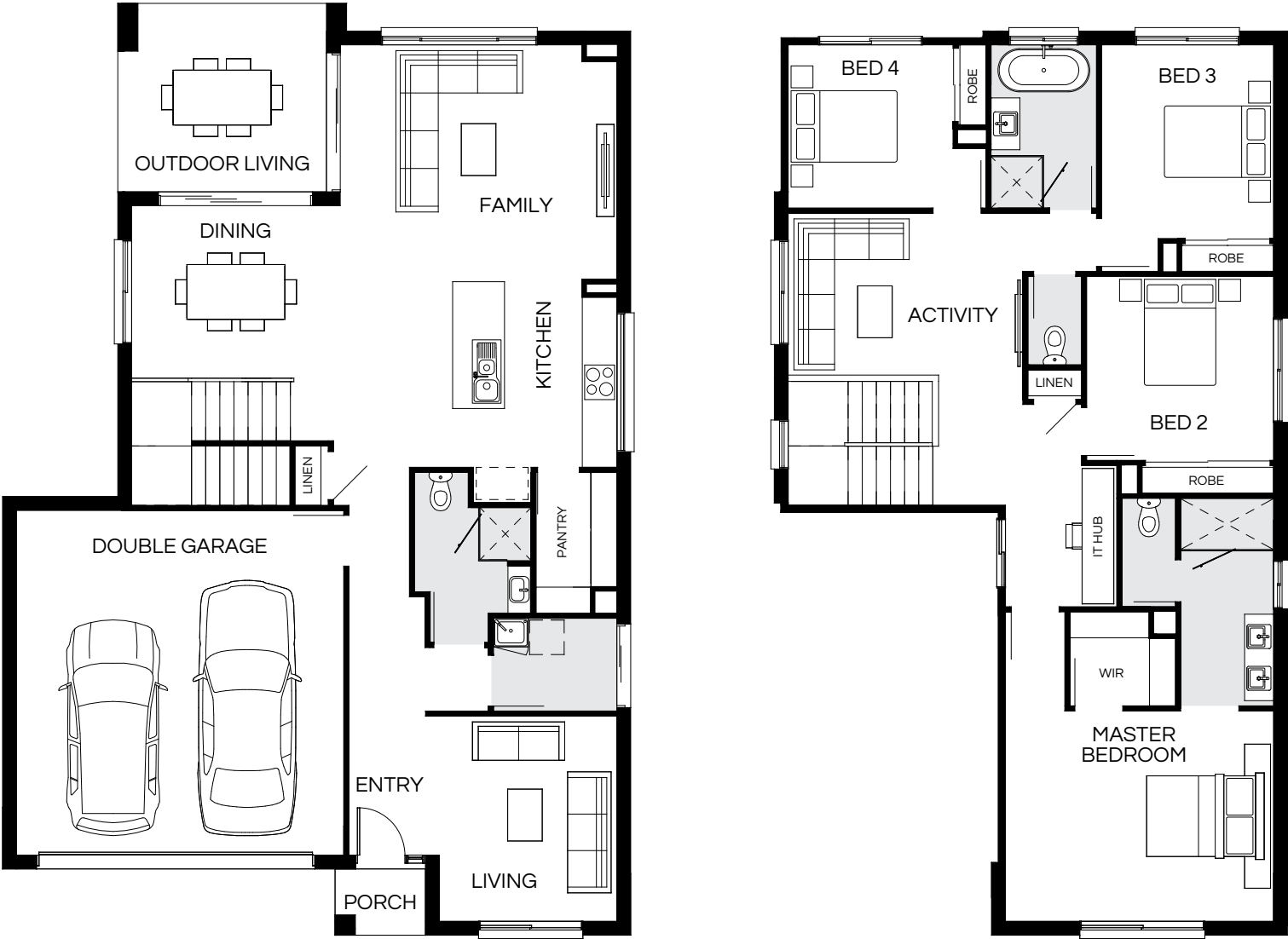


Master Bed	3500 x 4820	Dining	3050 x 3620	House Length	15.90m	Lower Area	149.50m <sup>2</sup>
Bed 2	2850 x 2800	Family	4120 x 4820	House Width	10.90m	Upper Area	86.82m <sup>2</sup>
Bed 3	3050 x 2900	Living	3790 x 3100	House Area		236.32m <sup>2</sup> (25.44sq)	
Bed 4	2980 x 3030	Outdoor	2790 x 3620			<b>Lot width</b>	<b>12m<sup>+</sup></b>

Floorplan and lot width based on Designer facade. Floorplan is indicative only, conceptual in nature and subject to change without notice. Floorplan may depict features and/or other products which are not included in the house design, not included in the house price and/or not available from Coral Homes. All measurements are in millimetres unless otherwise stated. Floorplan measurements are approximate and are not to scale. Lot width is a guide only and may change due to developer covenants and Local Authority guidelines. For more information speak to your Coral Homes New Home Consultant. © Coral Homes Pty Ltd.

# Monash 259Q

4  | 3  | 3  | 2 



Design options available: Master to rear   Additional costs apply for design options.							
Master Bed	3670 x 4670	Activity	2830 x 4090	Outdoor	3270 x 3620	Lower Area	150.14m <sup>2</sup>
Bed 2	3210 x 3260	Dining	3050 x 3620	House Length	16.17m	Upper Area	109.82m <sup>2</sup>
Bed 3	3380 x 3000	Family	4120 x 4820	House Width	10.90m	House Area	259.96m <sup>2</sup> (27.98sq)
Bed 4	2850 x 2880	Living	3580 x 3100			<b>Lot width</b>	<b>12m<sup>+</sup></b>

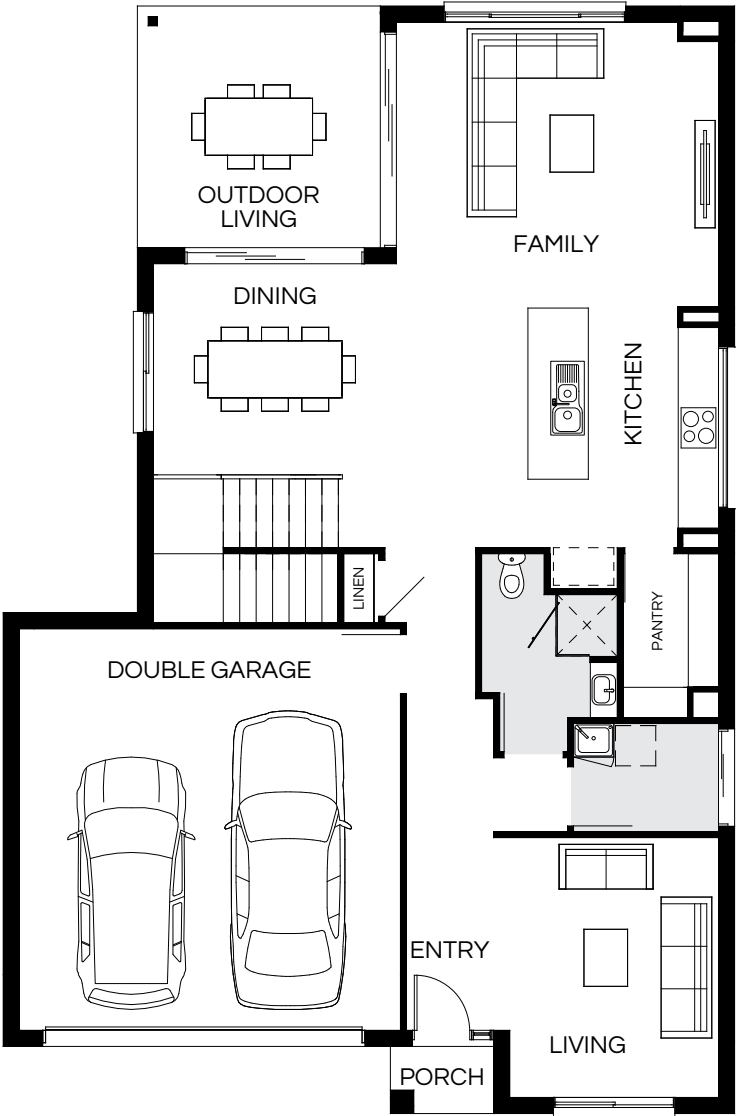
Floorplan and lot width based on Designer facade. Floorplan is indicative only, conceptual in nature and subject to change without notice. Floorplan may depict features and/or other products which are not included in the house design, not included in the house price and/or not available from Coral Homes. All measurements are in millimetres unless otherwise stated. Floorplan measurements are approximate and are not to scale. Lot width is a guide only and may change due to developer covenants and Local Authority guidelines. For more information speak to your Coral Homes New Home Consultant. © Coral Homes Pty Ltd.





# Monash 273Q

4 | 3 | 3 | 2



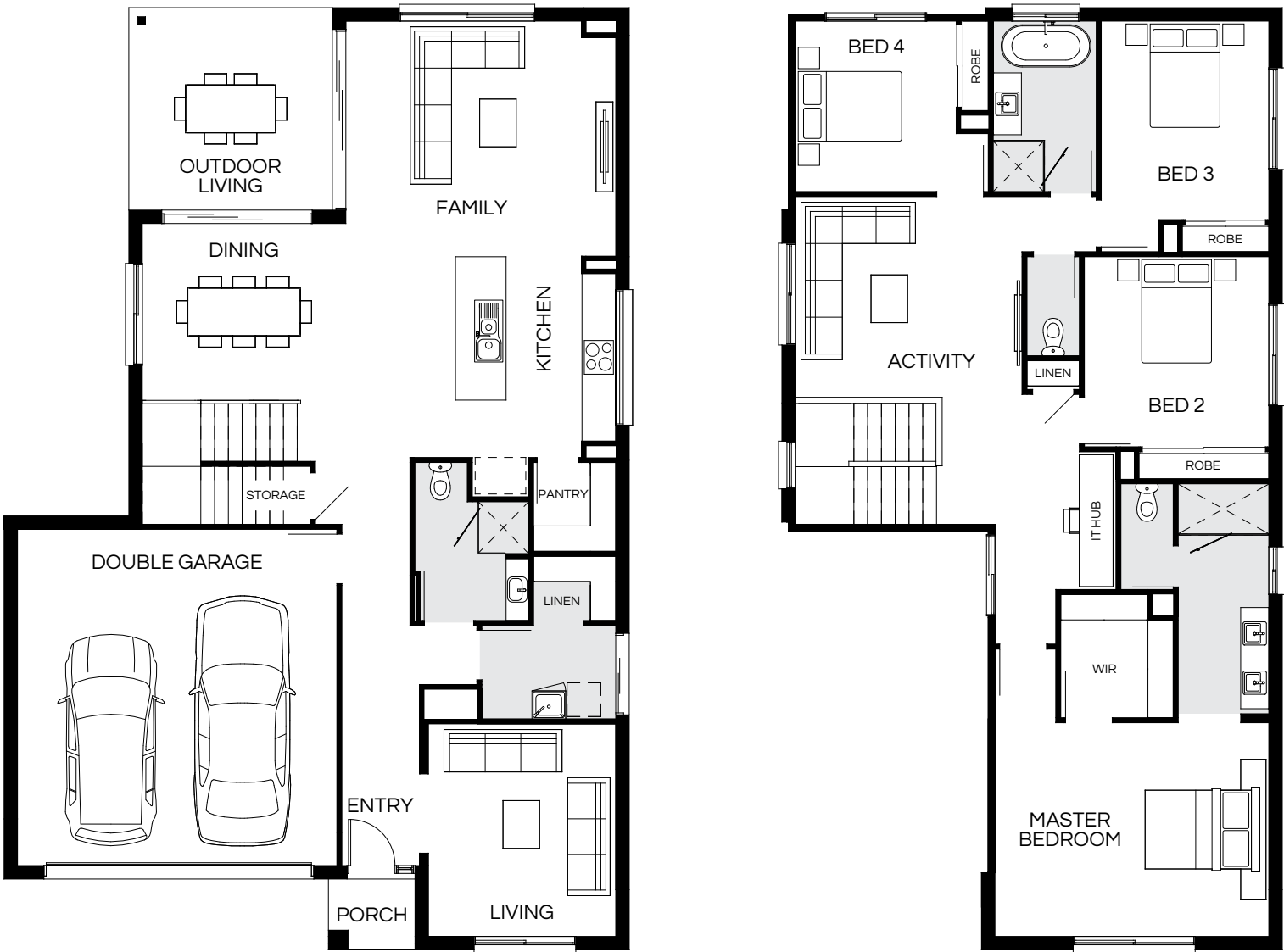
Design options available: Master to rear   Additional costs apply for design options.							
Master Bed	4000 x 4670	Activity	3580 x 4050	Outdoor	3600 x 3620	Lower Area	155.99m <sup>2</sup>
Bed 2	3440 x 3300	Dining	3200 x 3620	House Length	16.50m	Upper Area	117.46m <sup>2</sup>
Bed 3	3510 x 3000	Family	4270 x 4820	House Width	10.90m	House Area	273.45m <sup>2</sup> (29.43sq)
Bed 4	3060 x 2850	Living	3890 x 3130			Lot width	12m <sup>+</sup>

Floorplan and lot width based on Designer facade. Floorplan is indicative only, conceptual in nature and subject to change without notice. Floorplan may depict features and/or other products which are not included in the house design, not included in the house price and/or not available from Coral Homes. All measurements are in millimetres unless otherwise stated. Floorplan measurements are approximate and are not to scale. Lot width is a guide only and may change due to developer covenants and Local Authority guidelines. For more information speak to your Coral Homes New Home Consultant. © Coral Homes Pty Ltd.



# Monash 279Q


4  | 3  | 3  | 2 



Design options available: Master to rear   Additional costs apply for design options.							
Master Bed	3820 x 4890	Activity	3590 x 4050	Outdoor	3600 x 3620	Lower Area	159.03m²
Bed 2	3400 x 3300	Dining	3200 x 3620	House Length	16.76m	Upper Area	120.45m²
Bed 3	3550 x 3000	Family	4200 x 4820	House Width	11.12m	House Area	279.48m² (30.08sq)
Bed 4	3050 x 2880	Living	3800 x 3350			Lot width	12.5m+

Floorplan and lot width based on Designer facade. Floorplan is indicative only, conceptual in nature and subject to change without notice. Floorplan may depict features and/or other products which are not included in the house design, not included in the house price and/or not available from Coral Homes. All measurements are in millimetres unless otherwise stated. Floorplan measurements are approximate and are not to scale. Lot width is a guide only and may change due to developer covenants and Local Authority guidelines. For more information speak to your Coral Homes New Home Consultant. © Coral Homes Pty Ltd.

# Monash 280Q

4  | 3  | 3  | 2 



Design options available: Master to rear   Additional costs apply for design options.							
Master Bed	5000 x 3795	Activity	3570 x 4350	Outdoor	3760 x 3590	Lower Area	159.47m²
Bed 2	3490 x 2900	Dining	3020 x 3590	House Length	16.28m	Upper Area	121.22m²
Bed 3	3370 x 2900	Family	4250 x 4750	House Width	11.84m	House Area	280.69m² (30.21sq)
Bed 4	3050 x 2900	Living	3820 x 3920			Lot width	13m+

Floorplan and lot width based on Designer facade. Floorplan is indicative only, conceptual in nature and subject to change without notice. Floorplan may depict features and/or other products which are not included in the house design, not included in the house price and/or not available from Coral Homes. All measurements are in millimetres unless otherwise stated. Floorplan measurements are approximate and are not to scale. Lot width is a guide only and may change due to developer covenants and Local Authority guidelines. For more information speak to your Coral Homes New Home Consultant. © Coral Homes Pty Ltd.



# Monash 294Q

5  | 3  | 3  | 2 



Design options available: Master to rear | Additional costs apply for design options.

Master Bed	3800 x 4670	Activity	3600 x 4050	House Length	18.10m	Lower Area	166.58m <sup>2</sup>
Bed 2	3480 x 3300	Dining	3370 x 3620	House Width	10.90m	Upper Area	127.97m <sup>2</sup>
Bed 3	3370 x 3000	Family	3850 x 4820			House Area	294.55m <sup>2</sup> (31.71sq)
Bed 4	3100 x 3450	Living	3650 x 3130			Lot width	12m <sup>+</sup>
Bed 5	2950 x 2890	Outdoor	4060 x 3620				

Floorplan and lot width based on Designer facade. Floorplan is indicative only, conceptual in nature and subject to change without notice. Floorplan may depict features and/or other products which are not included in the house design, not included in the house price and/or not available from Coral Homes. All measurements are in millimetres unless otherwise stated. Floorplan measurements are approximate and are not to scale. Lot width is a guide only and may change due to developer covenants and Local Authority guidelines. For more information speak to your Coral Homes New Home Consultant. © Coral Homes Pty Ltd.

Monash – North Harbour Estate, Burpengary East



Monash – North Harbour Estate, Burpengary East

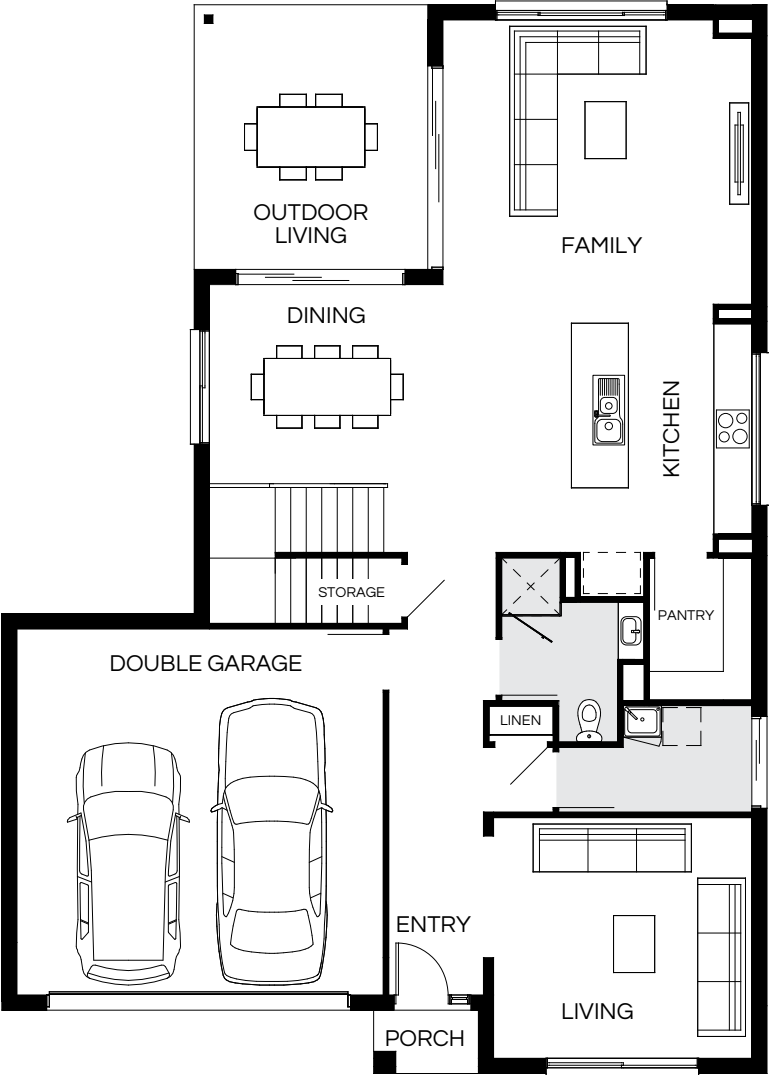


Photography depicts items such as homewares, furniture, finishes, landscaping and fencing and may depict items that are upgraded or not supplied by Coral Homes. Speak with your New Home Consultant for more details.



# Monash 299Q

4  | 3  | 3  | 2 

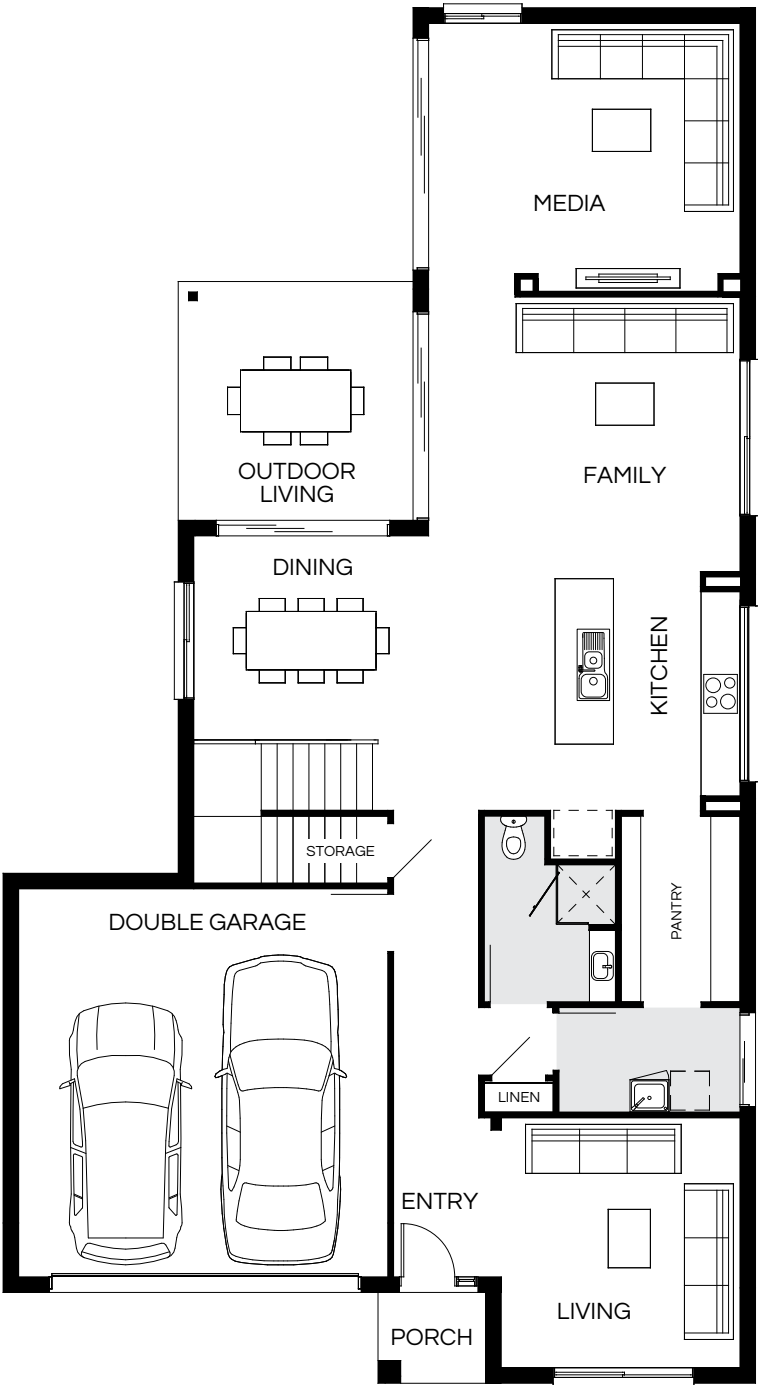


Design options available: Master to rear   Additional costs apply for design options.									
Master Bed	5220 x 3915	Activity	3570 x 4105	Outdoor	4180 x 3690	Lower Area	168.96m <sup>2</sup>		
Bed 2	3550 x 3000	Dining	3200 x 3690	House Length	16.88m	Upper Area	130.63m <sup>2</sup>		
Bed 3	3500 x 3000	Family	4800 x 4900	House Width	12.09m	House Area	299.59m <sup>2</sup> (32.25sq)		
Bed 4	3080 x 3600	Living	3820 x 4100			Lot width	13.5m <sup>+</sup>		

Floorplan and lot width based on Designer facade. Floorplan is indicative only, conceptual in nature and subject to change without notice. Floorplan may depict features and/or other products which are not included in the house design, not included in the house price and/or not available from Coral Homes. All measurements are in millimetres unless otherwise stated. Floorplan measurements are approximate and are not to scale. Lot width is a guide only and may change due to developer covenants and Local Authority guidelines. For more information speak to your Coral Homes New Home Consultant. © Coral Homes Pty Ltd.

# Monash 311Q

5  | 4  | 3  | 2 



Design options available: Master to rear   Additional costs apply for design options.									
Master Bed	4200 x 3770	Activity	3720 x 4140	Outdoor	3680 x 3620	Lower Area	186.53m <sup>2</sup>		
Bed 2	2950 x 3000	Dining	3200 x 3620	House Length	21.20m	Upper Area	124.65m <sup>2</sup>		
Bed 3	2930 x 3220	Family	4050 x 4820	House Width	11.60m	House Area	311.18m <sup>2</sup> (33.50sq)		
Bed 4	3000 x 3000	Living	3870 x 3700			Lot width	13m <sup>+</sup>		
Bed 5	3000 x 2930	Media	4080 x 4820						

Floorplan and lot width based on Designer facade. Floorplan is indicative only, conceptual in nature and subject to change without notice. Floorplan may depict features and/or other products which are not included in the house design, not included in the house price and/or not available from Coral Homes. All measurements are in millimetres unless otherwise stated. Floorplan measurements are approximate and are not to scale. Lot width is a guide only and may change due to developer covenants and Local Authority guidelines. For more information speak to your Coral Homes New Home Consultant. © Coral Homes Pty Ltd.





# Monash 315Q

6 | 3 | 3 | 2



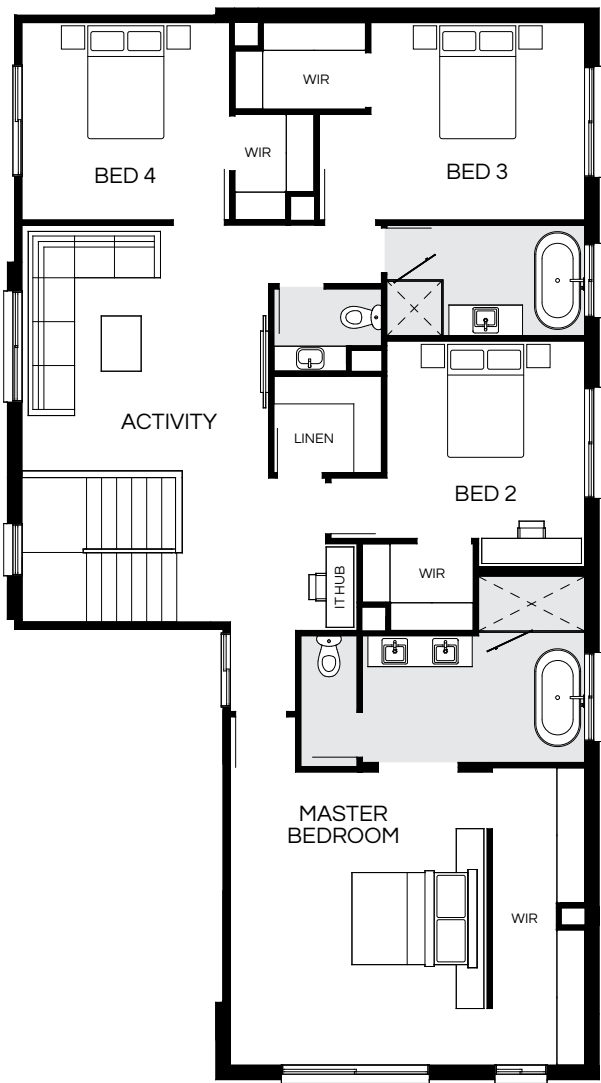
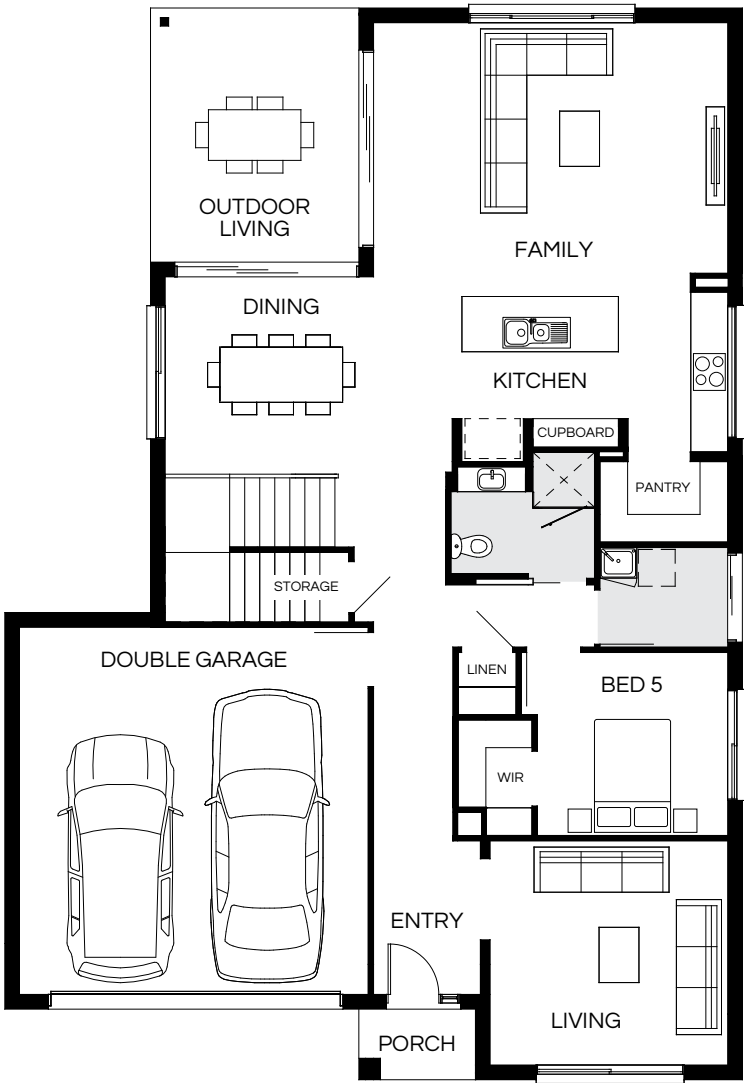
Design options available: Master to front with 5 bedrooms   Master to rear with 5 bedrooms   Additional costs apply for design options.							
Master Bed	4370 x 3860	Guest	2910 x 3100	Outdoor	3990 x 3740	Lower Area	177.20m²
Bed 2	3370 x 3000	Activity	3660 x 4010	House Length	18.45m	Upper Area	138.42m²
Bed 3	3370 x 3000	Dining	3400 x 3740	House Width	11.74m	House Area	315.62m² (33.97sq)
Bed 4	3400 x 3000	Family	3740 x 5030			Lot width	13m+
Bed 5	3000 x 3600	Living	3620 x 3950				

Floorplan and lot width based on Designer facade. Floorplan is indicative only, conceptual in nature and subject to change without notice. Floorplan may depict features and/or other products which are not included in the house design, not included in the house price and/or not available from Coral Homes. All measurements are in millimetres unless otherwise stated. Floorplan measurements are approximate and are not to scale. Lot width is a guide only and may change due to developer covenants and Local Authority guidelines. For more information speak to your Coral Homes New Home Consultant. © Coral Homes Pty Ltd.



# Monash 321Q

5  | 3  | 3.5  | 2 

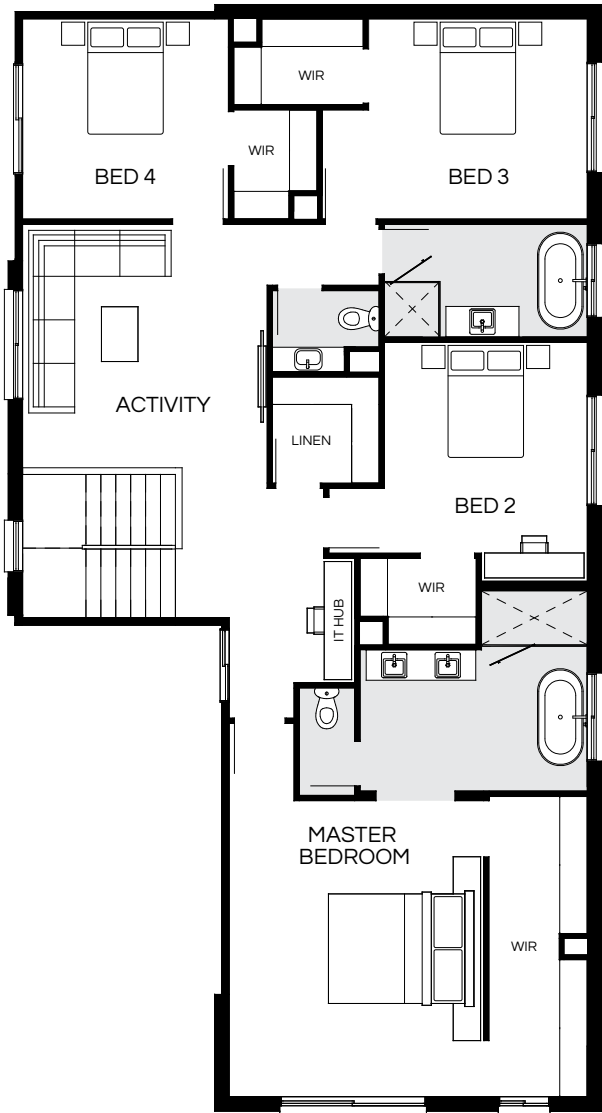
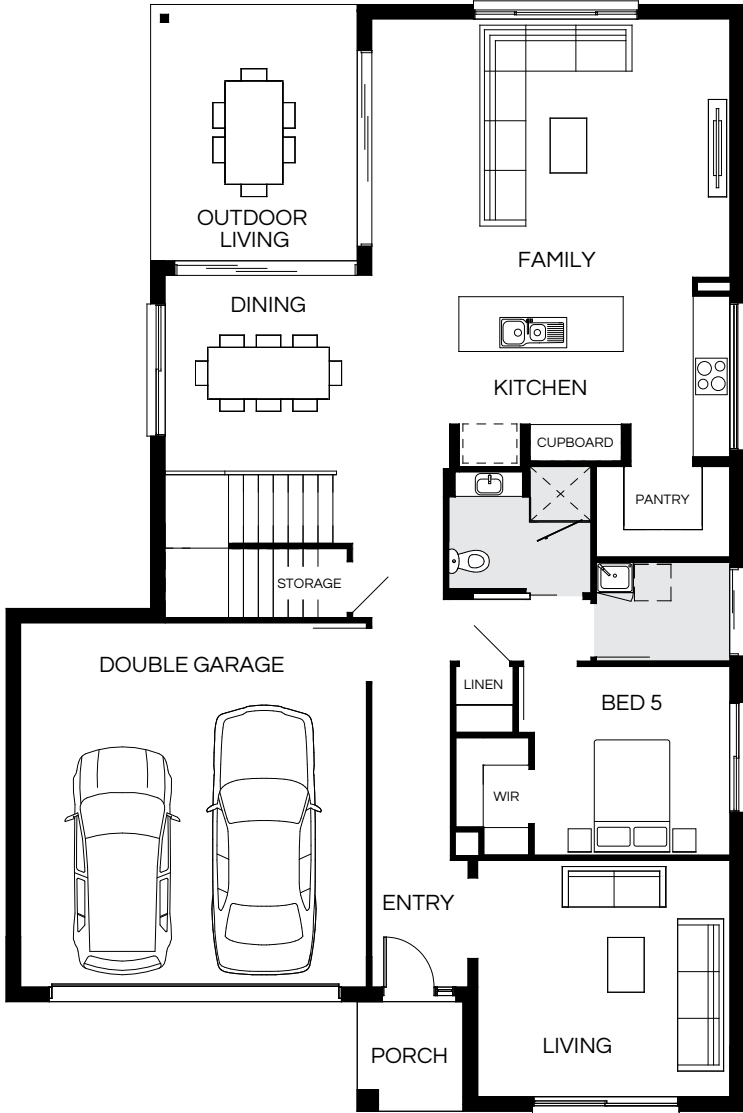


Design options available: Master to rear   Additional costs apply for design options.							
Master Bed	4790 x 4200	Activity	4020 x 4035	House Length	17.46m	Lower Area	179.85m²
Bed 2	3230 x 3240	Dining	3270 x 3395	House Width	12.02m	Upper Area	141.17m²
Bed 3	3230 x 3500	Family	4470 x 5790			House Area	321.02m² (34.56sq)
Bed 4	3230 x 3400	Living	3670 x 3890			Lot width	13.5m+
Bed 5	3000 x 3120	Outdoor	4140 x 3395				

Floorplan and lot width based on Designer facade. Floorplan is indicative only, conceptual in nature and subject to change without notice. Floorplan may depict features and/or other products which are not included in the house design, not included in the house price and/or not available from Coral Homes. All measurements are in millimetres unless otherwise stated. Floorplan measurements are approximate and are not to scale. Lot width is a guide only and may change due to developer covenants and Local Authority guidelines. For more information speak to your Coral Homes New Home Consultant. © Coral Homes Pty Ltd.

# Monash 334Q

5  | 3  | 3.5  | 2 



Design options available: Master to rear   Additional costs apply for design options.							
Master Bed	4880 x 4200	Activity	4020 x 4035	House Length	18.18m	Lower Area	186.57m²
Bed 2	3480 x 3350	Dining	3270 x 3395	House Width	12.13m	Upper Area	147.90m²
Bed 3	3300 x 3610	Family	4570 x 5900			House Area	334.47m² (36.00sq)
Bed 4	3300 x 3400	Living	3900 x 4160			Lot width	13.5m+
Bed 5	3115 x 3230	Outdoor	4210 x 3395				

Floorplan and lot width based on Designer facade. Floorplan is indicative only, conceptual in nature and subject to change without notice. Floorplan may depict features and/or other products which are not included in the house design, not included in the house price and/or not available from Coral Homes. All measurements are in millimetres unless otherwise stated. Floorplan measurements are approximate and are not to scale. Lot width is a guide only and may change due to developer covenants and Local Authority guidelines. For more information speak to your Coral Homes New Home Consultant. © Coral Homes Pty Ltd.



# Monash Facades

12m+ Lot Width



Scan  
to view  
facades

Modern



Piermont



Hamptons Balcony



Vista



Vaucluse



Designer



Hamptons Display Facade





# Rochester Series

The Rochester Series has been designed to fit narrow lots of 10m+ widths, offering simple solutions to inner-city family living. These double storey home designs offer a range of flexible floorplans and facades to choose from. Each home design features a large, centrally located kitchen with an island bench and breakfast bar on the lower level.



Rochester (Vista Facade) – Newport Estate, Newport



On  
display

Rochester – Newport Estate, Newport





# Rochester 265Q

5  | 2  | 3  | 2 



Design options available: Master to rear   Additional costs apply for design options.							
Master Bed	3830 x 4400	Guest	3000 x 3250	Outdoor	3600 x 2590	Lower Area	150.85m²
Bed 2	3050 x 3000	Activity	3525 x 3470	House Length	21.435m	Upper Area	114.60m²
Bed 3	3250 x 2950	Dining	3320 x 2590	House Width	8.40m	House Area	265.45m² (28.57sq)
Bed 4	3100 x 2950	Living	3600 x 4400			Lot width	10m+

Floorplan and lot width based on Designer facade. Floorplan is indicative only, conceptual in nature and subject to change without notice. Floorplan may depict features and/or other products which are not included in the house design, not included in the house price and/or not available from Coral Homes. All measurements are in millimetres unless otherwise stated. Floorplan measurements are approximate and are not to scale. Lot width is a guide only and may change due to developer covenants and Local Authority guidelines. For more information speak to your Coral Homes New Home Consultant. © Coral Homes Pty Ltd.

# Rochester 276Q

4  | 3  | 3  | 2 



Design options available: Master to rear   Additional costs apply for design options.							
Master Bed	3720 x 4400	Activity	3655 x 3470	Outdoor	4000 x 2590	Lower Area	157.91m²
Bed 2	3200 x 3000	Dining	3690 x 2590	House Length	22.355m	Upper Area	118.67m²
Bed 3	3050 x 3235	Living	4000 x 4400	House Width	8.40m	House Area	276.58m² (29.77sq)
Bed 4	3050 x 3235	Media	3750 x 3300			Lot width	10m+

Floorplan and lot width based on Designer facade. Floorplan is indicative only, conceptual in nature and subject to change without notice. Floorplan may depict features and/or other products which are not included in the house design, not included in the house price and/or not available from Coral Homes. All measurements are in millimetres unless otherwise stated. Floorplan measurements are approximate and are not to scale. Lot width is a guide only and may change due to developer covenants and Local Authority guidelines. For more information speak to your Coral Homes New Home Consultant. © Coral Homes Pty Ltd.



# Rochester 288Q

5  | 2  | 3  | 2 




Design options available: Master to rear | Additional costs apply for design options.

Master Bed	3920 x 3470	Guest	3300 x 3350	Outdoor	4250 x 2590	Lower Area	165.01m <sup>2</sup>
Bed 2	3400 x 3470	Activity	3950 x 4665	House Length	23.17m	Upper Area	123.80m <sup>2</sup>
Bed 3	3320 x 3000	Dining	3690 x 2590	House Width	8.40m	House Area	288.81m <sup>2</sup> (31.09sq)
Bed 4	3320 x 3000	Living	4240 x 4400			Lot width	10m <sup>+</sup>

Floorplan and lot width based on Designer facade. Floorplan is indicative only, conceptual in nature and subject to change without notice. Floorplan may depict features and/or other products which are not included in the house design, not included in the house price and/or not available from Coral Homes. All measurements are in millimetres unless otherwise stated. Floorplan measurements are approximate and are not to scale. Lot width is a guide only and may change due to developer covenants and Local Authority guidelines. For more information speak to your Coral Homes New Home Consultant. © Coral Homes Pty Ltd.

# Rochester 304Q

4  | 3  | 3  | 2 



Design options available: Master to rear | Guest bedroom | Additional costs apply for design options.

Master Bed	4200 x 4300	Activity	4000 x 4665	Outdoor	4360 x 2590	Lower Area	174.46m <sup>2</sup>
Bed 2	3500 x 3000	Dining	4190 x 2590	House Length	24.30m	Upper Area	130.23m <sup>2</sup>
Bed 3	3000 x 3270	Living	4360 x 4400	House Width	8.40m	House Area	304.69m <sup>2</sup> (32.80sq)
Bed 4	3200 x 3200	Media	3950 x 3350			Lot width	10m <sup>+</sup>

Floorplan and lot width based on Designer facade. Floorplan is indicative only, conceptual in nature and subject to change without notice. Floorplan may depict features and/or other products which are not included in the house design, not included in the house price and/or not available from Coral Homes. All measurements are in millimetres unless otherwise stated. Floorplan measurements are approximate and are not to scale. Lot width is a guide only and may change due to developer covenants and Local Authority guidelines. For more information speak to your Coral Homes New Home Consultant. © Coral Homes Pty Ltd.





# Rochester Facades

10m+ Lot Width



Vista Display Facade



Modern



Hamptons



East Hamptons



Mornington



Designer









# Sacramento Series

The elegant Sacramento Series is designed with families in mind, offering a range of versatile floorplans and facades that beautifully combine style and functionality. A striking staircase welcomes you upon entry, leading into an open-plan kitchen that seamlessly connects to an inviting outdoor area. Upstairs, a private master retreat with a spacious walk-in robe and ensuite is complemented by a secondary living space, providing plenty of room for relaxation and family time.



Scan to view series

Sacramento – Springfield Rise, Spring Mountain



Photography depicts items such as homewares, furniture, finishes, landscaping and fencing and may depict items that are upgraded or not supplied by Coral Homes. Speak with your New Home Consultant for more details.

Sacramento (Modern Facade) – Springfield Rise, Spring Mountain



On  
display

Award  
winner





Sacramento – Springfield Rise, Spring Mountain



Photography depicts items such as homewares, furniture, finishes, landscaping and fencing and may depict items that are upgraded or not supplied by Coral Homes. Speak with your New Home Consultant for more details.



# Sacramento 215Q




4  | 1  | 2.5  | 2 



Master Bed	3520 x 4350	Dining	2700 x 3820	House Length	18.83m	Lower Area	118.80m <sup>2</sup>
Bed 2	3240 x 3285	Living	3760 x 3940	House Width	8.45m	Upper Area	97.15m <sup>2</sup>
Bed 3	3020 x 3285	Outdoor	2500 x 3800			House Area	215.95m <sup>2</sup> (23.25sq)
Bed 4	3070 x 2960					Lot width	10m <sup>+</sup>

Floorplan and lot width based on Designer facade. Floorplan is indicative only, conceptual in nature and subject to change without notice. Floorplan may depict features and/or other products which are not included in the house design, not included in the house price and/or not available from Coral Homes. All measurements are in millimetres unless otherwise stated. Floorplan measurements are approximate and are not to scale. Lot width is a guide only and may change due to developer covenants and Local Authority guidelines. For more information speak to your Coral Homes New Home Consultant. © Coral Homes Pty Ltd.

# Sacramento 221Q

4  | 1  | 2.5  | 2 



Master Bed	3520 x 4350	Dining	2760 x 3930	House Length	19.03m	Lower Area	123.12m <sup>2</sup>
Bed 2	3340 x 3285	Living	3900 x 4570	House Width	8.45m	Upper Area	98.12m <sup>2</sup>
Bed 3	3120 x 3285	Outdoor	2500 x 4000			House Area	221.24m <sup>2</sup> (23.81sq)
Bed 4	3070 x 2960					Lot width	10m <sup>+</sup>

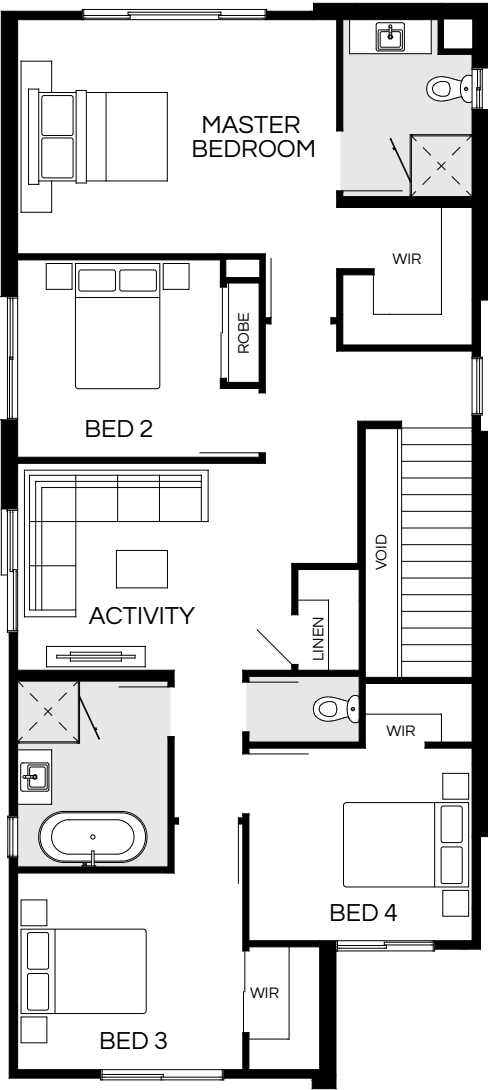
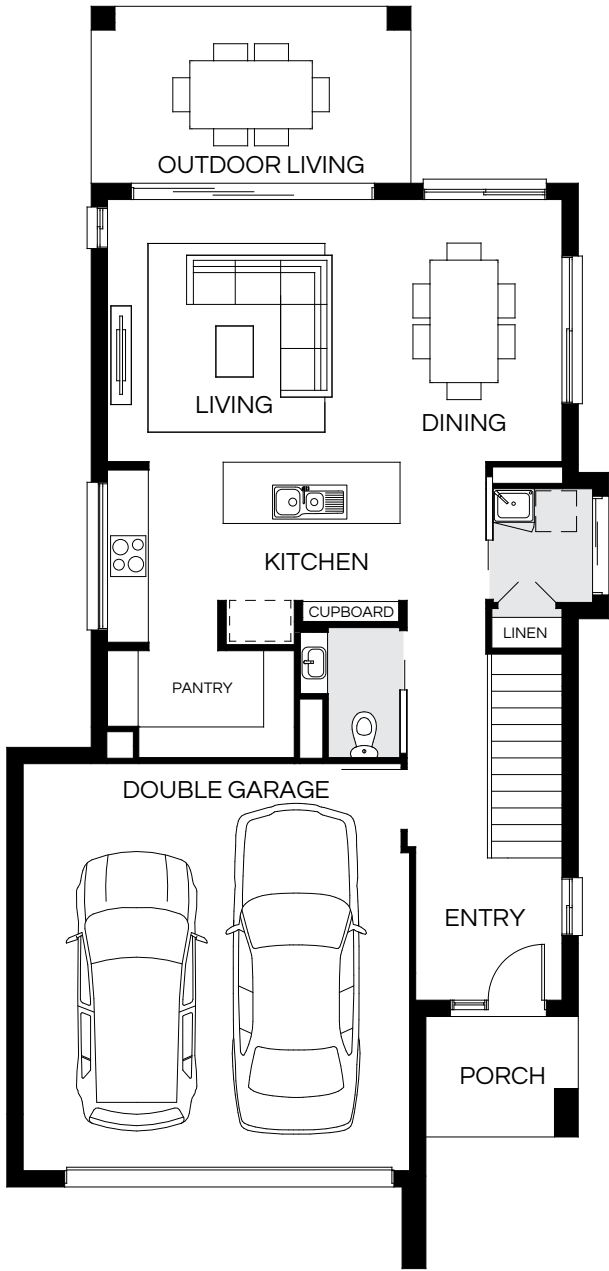
Floorplan and lot width based on Designer facade. Floorplan is indicative only, conceptual in nature and subject to change without notice. Floorplan may depict features and/or other products which are not included in the house design, not included in the house price and/or not available from Coral Homes. All measurements are in millimetres unless otherwise stated. Floorplan measurements are approximate and are not to scale. Lot width is a guide only and may change due to developer covenants and Local Authority guidelines. For more information speak to your Coral Homes New Home Consultant. © Coral Homes Pty Ltd.





# Sacramento 231Q

4 | 2 | 2.5 | 2







Master Bed	3460 x 4170	Activity	3060 x 4050	House Length	18.55m	Lower Area	125.57m <sup>2</sup>
Bed 2	2920 x 3000	Dining	3870 x 2900	House Width	8.85m	Upper Area	106.28m <sup>2</sup>
Bed 3	2910 x 3330	Living	3870 x 3800			House Area	231.85m <sup>2</sup> (24.96sq)
Bed 4	2850 x 3300	Outdoor	2600 x 4700			Lot width	10m <sup>+</sup>

Floorplan and lot width based on Designer facade. Floorplan is indicative only, conceptual in nature and subject to change without notice. Floorplan may depict features and/or other products which are not included in the house design, not included in the house price and/or not available from Coral Homes. All measurements are in millimetres unless otherwise stated. Floorplan measurements are approximate and are not to scale. Lot width is a guide only and may change due to developer covenants and Local Authority guidelines. For more information speak to your Coral Homes New Home Consultant. © Coral Homes Pty Ltd.



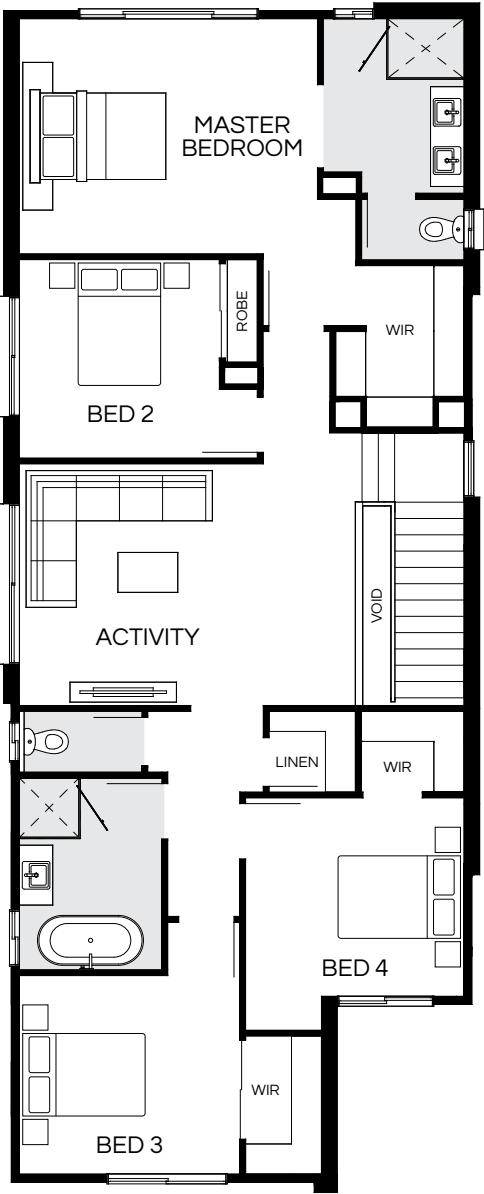
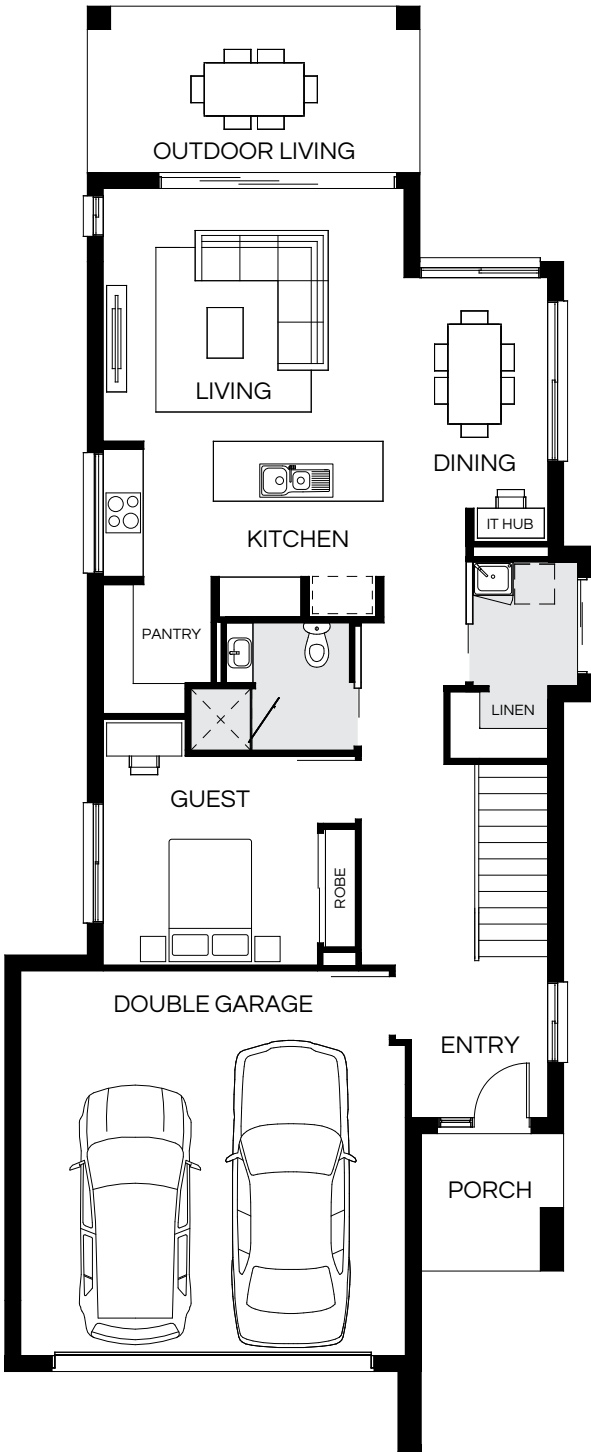
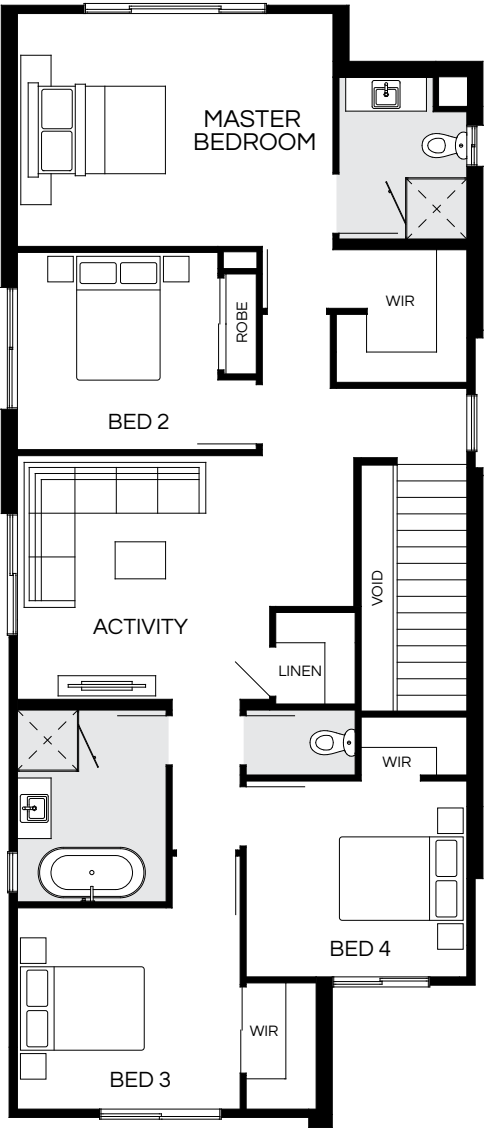
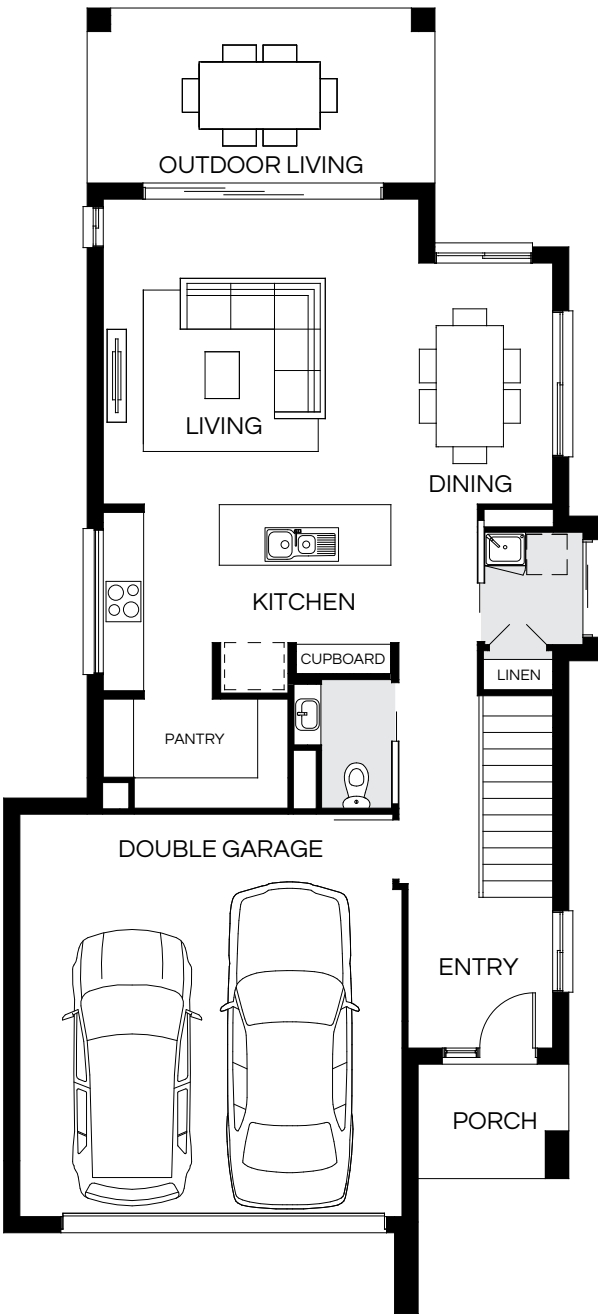
# Sacramento 241Q

4  | 2  | 2.5  | 2 

# Sacramento 263Q

5  | 2  | 3  | 2 

Most popular



Master Bed	3480 x 4170	Activity	3640 x 3770	House Length	19.40m	Lower Area	130.85m <sup>2</sup>
Bed 2	2950 x 3000	Dining	3600 x 2800	House Width	8.85m	Upper Area	110.25m <sup>2</sup>
Bed 3	3010 x 3330	Living	4550 x 3800			House Area	241.10m <sup>2</sup> (25.95sq)
Bed 4	2930 x 3300	Outdoor	2600 x 5170			Lot width	10m <sup>+</sup>

Floorplan and lot width based on Designer facade. Floorplan is indicative only, conceptual in nature and subject to change without notice. Floorplan may depict features and/or other products which are not included in the house design, not included in the house price and/or not available from Coral Homes. All measurements are in millimetres unless otherwise stated. Floorplan measurements are approximate and are not to scale. Lot width is a guide only and may change due to developer covenants and Local Authority guidelines. For more information speak to your Coral Homes New Home Consultant. © Coral Homes Pty Ltd.

Design options available: Master to front | Additional costs apply for design options.

Master Bed	3550 x 4500	Guest	3160 x 3240	Outdoor	2500 x 5000	Lower Area	144.63m <sup>2</sup>
Bed 2	3000 x 3025	Activity	3650 x 5070	House Length	21.72m	Upper Area	118.54m <sup>2</sup>
Bed 3	3000 x 3330	Dining	3475 x 2160	House Width	8.85m	House Area	263.17m <sup>2</sup> (28.33sq)
Bed 4	3000 x 3300	Living	3815 x 4540			Lot width	10m <sup>+</sup>

Floorplan and lot width based on Designer facade. Floorplan is indicative only, conceptual in nature and subject to change without notice. Floorplan may depict features and/or other products which are not included in the house design, not included in the house price and/or not available from Coral Homes. All measurements are in millimetres unless otherwise stated. Floorplan measurements are approximate and are not to scale. Lot width is a guide only and may change due to developer covenants and Local Authority guidelines. For more information speak to your Coral Homes New Home Consultant. © Coral Homes Pty Ltd.



# Sacramento 278Q

4  | 3  | 3  | 2 






Design options available: Master to front | Additional costs apply for design options.

Master Bed	3620 x 4555	Activity	3860 x 5070	Outdoor	2900 x 5000	Lower Area	152.39m <sup>2</sup>
Bed 2	3000 x 3200	Dining	3055 x 2160	House Length	22.89m	Upper Area	125.63m <sup>2</sup>
Bed 3	3200 x 3330	Living	4065 x 4540	House Width	8.85m	House Area	278.02m <sup>2</sup> (29.93sq)
Bed 4	3000 x 3300	Media	3500 x 3740			Lot width	10m+

Floorplan and lot width based on Designer facade. Floorplan is indicative only, conceptual in nature and subject to change without notice. Floorplan may depict features and/or other products which are not included in the house design, not included in the house price and/or not available from Coral Homes. All measurements are in millimetres unless otherwise stated. Floorplan measurements are approximate and are not to scale. Lot width is a guide only and may change due to developer covenants and Local Authority guidelines. For more information speak to your Coral Homes New Home Consultant. © Coral Homes Pty Ltd.

# Sacramento 301Q

4  | 3  | 3.5  | 2 



Design options available: Master to front | Additional costs apply for design options.

Master Bed	3750 x 4555	Activity	4040 x 5020	Outdoor	2900 x 5760	Lower Area	162.61m <sup>2</sup>
Bed 2	3000 x 3200	Dining	4265 x 2950	House Length	23.41m	Upper Area	138.48m <sup>2</sup>
Bed 3	3220 x 4460	Living	4265 x 3750	House Width	8.85m	House Area	301.09sqm (32.41sq)
Bed 4	3000 x 3300	Media	3650 x 3740			Lot width	10m+

Floorplan and lot width based on Designer facade. Floorplan is indicative only, conceptual in nature and subject to change without notice. Floorplan may depict features and/or other products which are not included in the house design, not included in the house price and/or not available from Coral Homes. All measurements are in millimetres unless otherwise stated. Floorplan measurements are approximate and are not to scale. Lot width is a guide only and may change due to developer covenants and Local Authority guidelines. For more information speak to your Coral Homes New Home Consultant. © Coral Homes Pty Ltd.



Sacramento – Springfield Rise, Spring Mountain



Sacramento – Springfield Rise, Spring Mountain



# Sacramento 318Q

4 | 3 | 3.5 | 2

On display

Award winner



Design options available: Master to front   Additional costs apply for design options.							
Master Bed	4020 x 4555	Activity	4000 x 5020	Outdoor	2900 x 7160	Lower Area	173.22m²
Bed 2	3100 x 3200	Dining	4985 x 2950	House Length	24.26m	Upper Area	144.79m²
Bed 3	3120 x 4460	Living	4985 x 3750	House Width	8.85m	House Area	318.01m² (34.23sq)
Bed 4	3100 x 3300	Media	3650 x 3740			Lot width	10m+

Floorplan and lot width based on Designer facade. Floorplan is indicative only, conceptual in nature and subject to change without notice. Floorplan may depict features and/or other products which are not included in the house design, not included in the house price and/or not available from Coral Homes. All measurements are in millimetres unless otherwise stated. Floorplan measurements are approximate and are not to scale. Lot width is a guide only and may change due to developer covenants and Local Authority guidelines. For more information speak to your Coral Homes New Home Consultant. © Coral Homes Pty Ltd.

Photography depicts items such as homewares, furniture, finishes, landscaping and fencing and may depict items that are upgraded or not supplied by Coral Homes. Speak with your New Home Consultant for more details.



# Sacramento 326Q

4 | 3 | 3.5 | 2



Design options available: Master to rear | Additional costs apply for design options.

Master Bed	4700 x 4560	Activity	3600 x 5020	Outdoor	3100 x 7160	Lower Area	178.04m²
Bed 2	3000 x 3200	Dining	5320 x 2950	House Length	24.98m	Upper Area	148.58m²
Bed 3	3450 x 3315	Living	5320 x 3750	House Width	8.85m	House Area	326.62m² (35.16sq)
Bed 4	3250 x 3315	Media	3870 x 3740			Lot width	10m+

Floorplan and lot width based on Designer facade. Floorplan is indicative only, conceptual in nature and subject to change without notice. Floorplan may depict features and/or other products which are not included in the house design, not included in the house price and/or not available from Coral Homes. All measurements are in millimetres unless otherwise stated. Floorplan measurements are approximate and are not to scale. Lot width is a guide only and may change due to developer covenants and Local Authority guidelines. For more information speak to your Coral Homes New Home Consultant. © Coral Homes Pty Ltd.

# Sacramento Facades

10m+ Lot Width



Modern Display Facade



Vista



Hamptons



East Hamptons



Designer



Facade images shown are indicative only, conceptual in nature and subject to change. Facade images are to be used as a guide, may depict non-standard items and may not be house specific. Please obtain house specific drawings from your New Home Consultant to assist you in making your facade choice.







# Find Out More



## Website

Want to see more of our home designs?  
Visit our website [coralhomes.com.au](https://coralhomes.com.au)



## Virtual Village

Not enough time to visit our Estates?  
Take an online tour at [coralhomes.com.au/virtual-tours](https://coralhomes.com.au/virtual-tours)



## Social

Connect with us! We update our social network with the  
best home inspiration, new releases, offers and more!

**CORAL**  
**HOMES**

© Coral Homes Pty Ltd. The copyright in the floorplans and facades depicted in this brochure are owned by or licensed to Coral Homes Pty Ltd and may not be reproduced, copied or dealt with in any manner which infringes the exclusive rights of Coral Homes Pty Ltd as prescribed by the Copyright Act 1968 without the express written authorisation of Coral Homes Pty Ltd. Coral Homes Pty Ltd QBCC 50792, NSW OFT 62084C, Coral Homes Qld Pty Ltd QBCC 1014053

Atlanta – SkyRidge, Worongary



Photography depicts items such as homewares, furniture, finishes, landscaping and fencing and may depict items that are upgraded or not supplied by Coral Homes. Speak with your New Home Consultant for more details.



# Why Coral Homes?

Our foundation is built on transparency, trust and exceptional customer service. Having built over 27,000 homes across three decades, our customers receive a fixed price guarantee, independent quality checks and so much more.



## 35 Years Experience

Providing a high level of quality, value for money, security and transparency, is why we are one of Australia's largest home builders today.



## Fixed Price Guarantee

We understand the financial commitments around building a home and provide you with peace of mind by offering contracts with a Fixed Price Guarantee\* upfront.



## Independent Quality Inspections

We have a stringent seven step Quality Assurance process to ensure we build each and every home to a high quality. This process includes an independent quality inspection.



## Award-Winning Home Builder

We're a proud two-time winner of the HIA Professional Major Builder Award, the industry's most prestigious award. We are also honoured to be named ProductReview winners for customer satisfaction for 2021, 2022 & 2024.

# CORAL HOMES

[coralhomes.com.au](https://coralhomes.com.au)

\*The fixed price guarantee is in respect to the cost of construction of your house and associated site works in accordance with the specifications of your contract. Coral Homes reserves the right to vary, terminate or suspend the operation of the Fixed Price Guarantee offer in its absolute discretion, without notice.